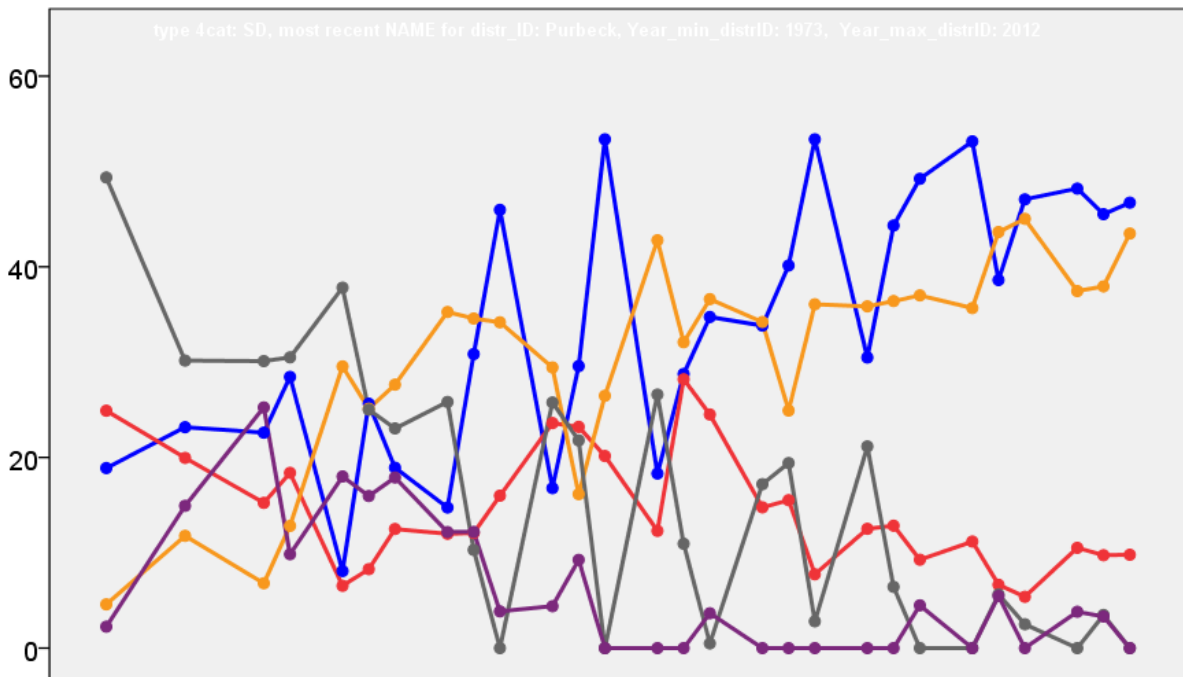


Purbeck District Council Election Results 1973-2012



Colin Rallings and Michael Thrasher
The Elections Centre
Plymouth University

The information contained in this report has been obtained from a number of sources. Election results from the immediate post-reorganisation period were painstakingly collected by Alan Willis largely, although not exclusively, from local newspaper reports. From the mid-1980s onwards the results have been obtained from each local authority by the Elections Centre. The data are stored in a database designed by Lawrence Ware and maintained by Brian Cheal and others at Plymouth University. Despite our best efforts some information remains elusive whilst we accept that some errors are likely to remain. Notice of any mistakes should be sent to elections@plymouth.ac.uk. The results sequence can be kept up to date by purchasing copies of the annual Local Elections Handbook, details of which can be obtained by contacting the email address above.

Front cover: the graph shows the distribution of percentage vote shares over the period covered by the results. The lines reflect the colours traditionally used by the three main parties. The grey line is the share obtained by Independent candidates while the purple line groups together the vote shares for all other parties.

Rear cover: the top graph shows the percentage share of council seats for the main parties as well as those won by Independents and other parties. The lines take account of any by-election changes (but not those resulting from elected councillors switching party allegiance) as well as the transfers of seats during the main round of local election.

The lower graph shows for each main round of local elections the overall percentage turnout (solid line), the percentage of women candidates standing at (dotted line) and the percentage of women among those elected (hashed line).

Purbeck - 1973

Bere Regis (1338)

		vote	share
House M.	Ind	220	41.4
Kircher-Smith M. Ms.	Ind	214	40.2
Day A.	Lab	98	18.4
Turnout		39.8	1.1

Castle (2343)²

		vote	share
Ryder D.	Ind	318	61.3
Worley			
Morton M. Ms.	Ind	263	-
Haw T.	Ind	237	-
Hamilton R.	Ind Con	201	38.7
Thorne H.	Ind	186	-
Turnout		22.2	22.5

Langton (1225)

		vote	share
Suttle E.	Ind	247	52.7
Wallace W.	Ind	222	47.3
Turnout		38.3	5.3

Lytchett Matravers (1378)

		vote	share
McDonald A.	Ind	0	0.0
Turnout		0.0	0.0

Lytchett Minster (3906)³

		vote	share
Tatchell M. Ms.	Ind	538	56.7
Humphry D.	Ind	478	-
Furnell M.	Ind	444	-
Holland J.	Lib	411	43.3
Dawson M.	Lib	407	-
Jinks P.	Ind	164	-
Turnout		24.3	13.4

St. Martin (2077)

		vote	share
Bartlett W.	Lab	540	55.8
Pearce M. Ms.	Ind	428	44.2
Turnout		46.6	11.6

Swanage (6125)⁵

		vote	share
Smith W.	Con	1,689	57.9
Brown R.	Con	1,427	-
Robinson C. Ms.	Con	1,423	-
Medrington M.	Con	1,417	-
Hancock B.	Con	1,310	-
Hardy A.	Lab	1,226	42.1
Strong W.	Lab	781	-
Turnout		47.6	15.9

Wareham (3402)³

		vote	share
Spiller J.	Ind	731	100.0
Lee S.	Ind	576	-
Worsdale G.	Ind	458	-
Barron E.	Ind	426	-
Anderson R.	Ind	395	-
Broughton H.	Ind	314	-
Turnout		21.5	-67.7

West Purbeck (1130)

		vote	share
Bond C. Ms.	Ind	0	0.0
Turnout		0.0	0.0

Winfrith (1133)

		vote	share
Debenham M.	Ind	0	0.0
Turnout		0.0	0.0

Wool (2656)²

		vote	share
Shinn S.	Lab	364	50.5
Voegeli A.	Lab	359	-
Morris R.	Ind	357	49.5
Williams E.	Ind	324	-
Butt E.	Ind	314	-
Lord S.	Ind	63	-
Turnout		27.1	1.0

Purbeck - 1976

Bere Regis (1322)

		vote	share
Stone V.	Ind	305	42.7
House M.*	Ind	229	32.0
Howard P. Ms.	Ind	104	14.5
Kircher-Smith M. Ms.	Ind	77	10.8
Turnout		55.0	10.6

Castle (2301)²

		vote	share
Ryder D.*	Ind	0	-
Worley			
Morton M. Ms.*	Ind	0	0.0
Turnout		0.0	0.0

Langton (1145)

		vote	share
Suttle W.*	Con	297	56.8
Bower C. Ms.	Ind	226	43.2
Turnout		48.1	13.6

Lytchett Matravers (1475)

		vote	share
McDonald A.*	Ind	396	59.5
Granger G.	Ind	270	40.5
Turnout		45.2	18.9

Lytchett Minster (4456)³

		vote	share
Humphry D.*	Res	987	40.1
Parker R.	Res	871	-
Tatchell M. Ms.*	Ind	724	29.4
Hindle J. Ms.	Lib	412	16.7
Brown M. Ms.	Lab	339	13.8
Robinson B.	Lab	333	-
Harley R.	Lab	254	-
Jinks P.	Ind	156	-
Turnout		35.7	10.7

St. Martin (2476)

		vote	share
Pearce M. Ms.	Ind	629	51.9
Bartlett W.*	Lab	583	48.1
Turnout		49.9	3.8

Swanage (6324)⁵

		vote	share
Smith W.*	Con	1,918	38.8
Medrington M.*	Con	1,708	-
Hancock B.*	Con	1,577	-
Robinson C. Ms.*	Con	1,510	-
Phelps R.	Con	1,449	-
Hardy A.	Lab	1,266	25.6
Brown R.*	Ind Con	1,062	21.5
Smith E.	Lib	694	14.0
South F.	Lib	524	-
Turnout		51.0	13.2

Wareham (3362)³

		vote	share
Spiller J.*	Ind	757	59.7
Lee S.*	Ind	639	-
Barron E.	Ind	528	-
Budd D.	Lib	510	40.3
Mole E.	Ind	350	-
Broughton H.	Ind	326	-
Turnout		40.3	19.5

West Purbeck (1134)

		vote	share
Bond C. Ms.*	Ind	0	0.0
Turnout		0.0	0.0

		vote	share
Winfrith (1170)			
Debenham M.*	Ind	0	0.0
Turnout		0.0	0.0

Wool (2933)²

		vote	share
Morris R.	Con	967	60.7
Hunt L. Ms.	Con	925	-
Shinn S.*	Lab	552	34.7
Woodhouse D.	Lab	443	-
Lord S.	Ind	74	4.6
Turnout		55.0	26.1

Purbeck - 1979

Bere Regis (1323)

		vote	share
Stone V.	Ind	0	0.0
Turnout		0.0	0.0

Castle (2282)²

		vote	share
Ryder D.	Ind	892	100.0
Worley			
Morton M. Ms.	Ind	844	-
Chipperfield D.	Ind	699	-
Turnout		71.1	38.1

Langton (1224)

		vote	share
Priddle N.	Ind	0	0.0
Turnout		0.0	0.0

Lytchett Matravers (1610)

		vote	share
McDonald A.	Ind	0	0.0
Turnout		0.0	0.0

Lytchett Minster (4844)³

		vote	share
Humphry D.	Res	2,406	53.3
Parker R.	Res	2,288	-
Tatchell M. Ms.	Ind	2,111	46.7
Jinks P.	Ind	831	-
Turnout		77.2	6.5

St. Martin (2553)²

		vote	share
Pearce M. Ms.	Ind	1,071	37.2
Sturdy S. Ms.	Con	1,036	36.0
Biles A.	Lab	769	26.7
Shinn S.	Lab	688	-
Turnout		76.3	1.2

Swanage North (2608)²

		vote	share
Robertson R.	Res	1,509	57.7
Parsons D. Ms.	Con	1,106	42.3
Robinson C. Ms.	Con	851	-
Turnout		77.8	15.4

Swanage South (4091)³

		vote	share
Gardiner E. Ms.	Res	1,337	35.8
Austin C.	Res	1,234	-
Hardy A.	Lab	1,230	32.9
Hancock B.	Con	1,171	31.3
Griffiths E.	Con	1,068	-
Nixon B.	Con	1,033	-
Turnout		73.4	2.9

Wareham (3574)³			
		vote	share
Spiller J.	Ind	1,489	43.1
Budd D.	Lib	1,414	41.0
Lee S.	Ind	1,333	-
Barron E.	Ind	1,163	-
Bentham W.	Lab	549	15.9
Marker V. Ms.	Lab	522	-
Turnout		77.9	2.2

West Purbeck (1174)			
		vote	share
Bond C. Ms.	Ind	0	0.0
Turnout		0.0	0.0

Winfrith (1115)			
		vote	share
Debenham B. Ms.	Ind	0	0.0
Turnout		0.0	0.0

Wool (2978)²			
		vote	share
Hunt L. Ms.	Con	1,388	69.1
Morris R.	Con	1,274	-
Hammersley R.	Lab	621	30.9
Biles G. Ms.	Lab	523	-
Turnout		70.8	38.2

Purbeck - 1980

Castle (2289)			
		vote	share
Worley-			
Morton M. Ms.*	Ind	378	51.8
Chipperfield D.	Ind	352	48.2
Turnout		31.9	3.6

Lytchett Minster (4960)			
		vote	share
Tatchell M. Ms.*	Ind	532	50.2
Dawson P. Ms.	Lib	528	49.8
Turnout		21.4	0.4

St. Martin (2580)			
		vote	share
Sturdy S. Ms.*	Con	596	56.0
Biles A.	Lab	469	44.0
Turnout		41.3	11.9

Swanage North (2601)			
		vote	share
Parsons D. Ms.*	Con	0	0.0
Turnout		0.0	0.0

Swanage South (4072)			
		vote	share
Hardy W.*	Res	640	54.4
Craven A. Ms.	Con	536	45.6
Turnout		28.9	8.8

Wareham (3565)			
		vote	share
Patterson C.	Ind	401	32.9
Lee S.*	Ind	320	26.3
Barnard T.	Lib	306	25.1
Lewis P.	Lab	192	15.8
Turnout		34.2	6.6

Wool (2764)			
		vote	share
Morris R.*	Con	718	57.3
Shinn S.	Lab	534	42.7
Turnout		45.3	14.7

Purbeck - 1982

Bere Regis (1563)			
		vote	share
Stone V.*	Ind	0	0.0
Turnout		0.0	0.0

Langton (1192)			
		vote	share
Priddle N.*	Ind	0	0.0
Turnout		0.0	0.0

Lytchett Matravers (1758)			
		vote	share
McDonald A.*	Ind	442	47.8
Phillips H. Ms.	Ind	294	31.8
Woodward R.	Ind	188	20.3
Turnout		52.6	16.0

Lytchett Minster (5086)			
		vote	share
Parker R.*	Res	696	51.4
Hannafor A.	Lib/SDP	525	38.7
Sombrook T.	Lab	134	9.9
Turnout		26.6	12.6

Swanage South (3972)			
		vote	share
Gainsborough L.	Con	506	39.7
Sanderson J.	Res	430	33.8
Sugrue J. Ms.	Lib/SDP	337	26.5
Turnout		32.0	6.0

Wareham (3633)			
		vote	share
Budd D.*	Lib/SDP	928	60.2
Hilson R.	Ind	441	28.6
Shinn S.	Lab	173	11.2
Turnout		42.4	31.6

West Purbeck (1201)			
		vote	share
Bond C. Ms.*	Ind	547	90.4
Wykes C.	Lib/SDP	58	9.6
Turnout		50.4	80.8

Winfrith (1196)			
		vote	share
Debenham B. Ms.*	Ind	453	81.6
Sherry D.	Lab	102	18.4
Turnout		46.4	63.2

Purbeck - 1983

Castle (2396)			
		vote	share
Parsons J.	Ind	655	56.6
Ryder J.*	Ind	503	43.4
Turnout		48.3	13.1

Lytchett Minster (5162)			
		vote	share
Humphry D.*	Res	872	55.6
Hannafor A.	Lib/SDP	602	38.4
Jinks P.	Ind	95	6.1
Turnout		30.4	17.2

St. Martin (2649)			
		vote	share
Pearce M. Ms.*	Con	0	0.0
Turnout		0.0	0.0

Swanage North (2795)			
		vote	share
Rawlings G. Ms.	Lib/SDP	599	43.2
Price H. Ms.	Con	590	42.6
Smith E.	Res	196	14.2
Turnout		49.6	0.6

Swanage South (3909)			
		vote	share
Craven A. Ms.	Con	644	43.0
Gardiner E. Ms.*	Res	354	23.7
Smith M. Ms.	Lib/SDP	258	17.2
Lowery D.	Lab	240	16.0
Turnout		38.3	19.4

Wareham (3612)			
		vote	share
Spiller J.*	Ind	977	55.6
Hurst M. Ms.	Lib/SDP	780	44.4
Turnout		48.6	11.2

Wool (3116)			
		vote	share
Hunt L. Ms.*	Con	1,051	67.9
Shinn S.	Lab	498	32.1
Turnout		49.7	35.7

Purbeck - 1984

Castle (2438)			
		vote	share
Duffy P.	Ind	579	50.8
Ferguson C.	Ind	560	49.2
Turnout		46.7	1.7

Lytchett Minster (5266)			
		vote	share
Hannafor A.	Lib/SDP	823	52.5
Boot P. Ms.	Res	656	41.8
Jinks P.	Lab	90	5.7
Turnout		29.8	10.6

St. Martin (1704)			
		vote	share
Hilton R.	Con	297	62.0
Turner P.	Lib/SDP	182	38.0
Turnout		28.1	24.0

Swanage North (2836)			
		vote	share
Parsons D. Ms.*	Con	0	0.0
Turnout		0.0	0.0

Swanage South (3953)			
		vote	share
Hardy W.*	Res	642	61.2
Llewellyn H.	Con	407	38.8
Turnout		26.5	22.4

Wareham (4661)			
		vote	share
Butler S. Ms.	Lib/SDP	999	57.2
Barron E.	Ind	532	30.5
Huskinson R.	Lab	215	12.3
Turnout		37.5	26.7

Wool (3221)			
		vote	share
Taylor J.	Con	669	52.7
Shinn S.	Lab	601	47.3
Turnout		39.4	5.4

Purbeck - 1986

Bere Regis (1595)

		vote	share
Stone V.*	Ind	589	79.8
Shinn S.	Lab	149	20.2

Turnout 46.3 59.6

Langton (1221)

		vote	share
Priddle N.*	Ind	424	82.3
Hedley J. Ms.	Lab	91	17.7

Turnout 42.2 64.7

Lytchett Matravers (2054)

		vote	share
McDonald A.*	Ind	538	48.9
Endecott R. Ms.	Lib/SDP	501	45.5
Norwood C.	Lab	61	5.5

Turnout 53.6 3.4

Lytchett Minster (5571)²

		vote	share
McKechnie J.	Lib/SDP	1,002	46.8
Moseley A. Ms.	Lib/SDP	818	-
Parker R.*	Res	786	36.7
Wilmot C. Ms.	Lab	352	16.4
Burns J.	Lab	320	-

Turnout 38.4 10.1

Swanage South (4161)

		vote	share
Marlow K.	Con	574	38.8
Hewlett G.	Lib/SDP	534	36.1
Dight J.	Res	371	25.1

Turnout 35.5 2.7

Wareham (4632)

		vote	share
Budd D.*	Lib/SDP	1,312	53.8
Smith D.	Con	826	33.9
Huskinson R.	Lab	301	12.3

Turnout 52.7 19.9

West Purbeck (1161)

		vote	share
Bond C. Ms.*	Ind	456	81.6
Bentham W.	Lab	103	18.4

Turnout 48.1 63.1

Winfrith (1281)

		vote	share
Debenham B. Ms.*	Ind	446	84.5
Dadds K.	Lab	82	15.5

Turnout 41.2 68.9

Purbeck - 1987

Castle (2484)

		vote	share
Parsons J.*	Ind	486	36.9
Jones D.	Lib/SDP	456	34.6
Hayward L.	Ind	241	18.3
Huskinson R.	Lab	135	10.2

Turnout 53.1 2.3

Langton (1243)

		vote	share
Viney D.	Ind	343	60.2
Hird V. Ms.	Lib/SDP	227	39.8

Turnout 45.9 20.4

Lytchett Minster (5648)

		vote	share
Humphry D.*	Res	1,044	47.8
Dean L.	Lib/SDP	873	40.0
Wilmot C. Ms.	Lab	267	12.2

Turnout 38.7 7.8

St. Martin (1815)²

		vote	share
Bond M.	Con	395	38.4
Morrissey M. Ms.	Con	368	-
Bell H. Ms.	Lib/SDP	359	34.9
Aitken E. Ms.	Lib/SDP	329	-
Hedley J. Ms.	Lab	274	26.7
Bentham W.	Lab	174	-

Turnout 56.6 3.5

Swanage North (3058)

		vote	share
Lever J.	Con	933	59.1
Rawlings G. Ms.*	Lib/SDP	588	37.2
Haysom C. Ms.	Lab	59	3.7

Turnout 51.7 21.8

Swanage South (4262)

		vote	share
Bolton J.	Con	728	36.5
Bradford W.	Res	552	27.7
Gardner N.	Lib/SDP	287	14.4
Wilson W.	Ind	277	13.9
Harding W.	Lab	148	7.4

Turnout 46.7 8.8

Wareham (4721)

		vote	share
Butler C.	Lib/SDP	1,253	49.2
Anderson R.	Con	1,045	41.0
McNairn D.	Lab	249	9.8

Turnout 54.0 8.2

Wool (3227)

		vote	share
Hunt L. Ms.*	Con	935	50.1
Briggs J. Ms.	All	482	25.8
Shinn S.	Lab	450	24.1

Turnout 57.9 24.3

Purbeck - 1988

Castle (2489)

		vote	share
Hayward L.	Con	517	46.1
Carter H.	SLD	483	43.0
Dixon M.	Lab	122	10.9

Turnout 45.1 3.0

Lytchett Minster (5694)

		vote	share
Chattaway A.	Con	883	42.5
Wise M.	SLD	806	38.8
Phelps R. Ms.	Lab	391	18.8

Turnout 36.5 3.7

St. Martin (1892)

		vote	share
Aitken E. Ms.	SLD	494	50.8
Morrissey M. Ms.	Con	356	36.6
Dadds K.	Lab	122	12.6

Turnout 51.4 14.2

Swanage North (3192)

		vote	share
Marsh G. Ms.	Con	879	60.1
Davis J.	SLD	584	39.9

Turnout 45.8 20.2

Swanage South (4438)

		vote	share
Wheeldon J. Ms.	Con	926	53.7
Waris J.	Res	439	25.5
Woodley R.	Lab	359	20.8

Turnout 38.8 28.2

Wareham (4783)

		vote	share
Butler S. Ms.*	SLD	1,203	48.7
Patterson C.	Con	1,000	40.5
McNairn D.	Lab	269	10.9

Turnout 51.7 8.2

Wool (3183)

		vote	share
Langford N.	Con	679	43.4
Shinn S.	Lab	559	35.8
Briggs J. Ms.	SLD	325	20.8

Turnout 49.1 7.7

Purbeck - 1990

Bere Regis (1704)

		vote	share
Stone V.*	Ind	635	76.0
Shinn S.	Lab	201	24.0

Turnout 49.1 51.9

Langton (1297)

		vote	share
Viney D.	Ind	472	79.5
Harding W.	Lab	122	20.5

Turnout 45.8 58.9

Lytchett Matravers (2192)

		vote	share
McDonald A.*	Ind	779	58.8
Patrick E. Ms.	Lib	464	35.0
Burns J.	Lab	81	6.1

Turnout 60.4 23.8

Lytchett Minster (5891)

		vote	share
Gainsford P.	SLD	1,237	45.8
Lees C.	Con	936	34.7
Cade R. Ms.	Lab	528	19.5

Turnout 45.8 11.1

Swanage South (4435)

		vote	share
Marlow K.*	Con	833	40.7
Meers H. Ms.	Lab	624	30.5
Dunford B. Ms.	SLD	592	28.9

Turnout 46.2 10.2

Wareham (4791)

		vote	share
Budd D.*	SLD	1,276	66.3
Huskinson R.	Lab	650	33.7

Turnout 40.2 32.5

West Purbeck (1148)

		vote	share
Bond C. Ms.*	Ind	376	71.9
Hedley J. Ms.	Lab	147	28.1

Turnout 45.6 43.8

Winfrith (1338)

		vote	share
Debenham B. Ms.*	Ind	456	76.9
Dixon M.	Lab	137	23.1

Turnout 44.3 53.8

Purbeck - 1991

Castle (2474)			
		vote	share
Carter H.	Ind	808	68.1
Wakeham P.	Lib	220	18.5
Chambers S. Ms.	Lab	159	13.4
Turnout		48.0	49.5

Lytchett Minster (5842)			
		vote	share
Humphry D.*	Ind	883	42.7
Galpin W.	LD	567	27.4
Cade R. Ms.	Lab	433	20.9
Moseley A. Ms.	Lib	184	8.9
Turnout		38.0	15.3

St. Martin (2021)			
		vote	share
Bond M.*	Ind	369	41.3
Hedley J. Ms.	Lab	241	27.0
Jackson D. Ms.	Lib	158	17.7
Turner P.	LD	126	14.1
Turnout		45.0	14.3

Swanage North (3142)			
		vote	share
Marsh V.	Con	986	57.0
Baume G.	Ind	516	29.8
Belben B.	Lab	228	13.2
Turnout		56.0	27.2

Swanage South (4427)			
		vote	share
Makin C.	Con	1,013	48.4
Meers H. Ms.	Lab	542	25.9
Dunford B. Ms.	LD	537	25.7
Turnout		48.0	22.5

Wareham (4673)			
		vote	share
Patterson C.	Con	706	30.6
Bird K.	LD	679	29.4
Butler C.*	Lib	533	23.1
Huskinson R.	Lab	388	16.8
Turnout		51.0	1.2

Wool (3452)			
		vote	share
Osborn F.	Con	793	51.3
Shinn S.	Lab	752	48.7
Turnout		43.0	2.7

Purbeck - 1992

Castle (2530)			
		vote	share
Haywrd L.*	Con	0	0.0
Turnout		0.0	0.0

Lytchett Minster (5870)			
		vote	share
Chattaway A.*	Con	990	51.5
Girdler M. Ms.	LD	737	38.4
Cade R. Ms.	Lab	194	10.1
Turnout		33.3	13.2

St. Martin (2076)			
		vote	share
Aitken E. Ms.*	LD	462	49.7
Sturdy S. Ms.	Con	362	38.9
Hedley J. Ms.	Lab	106	11.4
Turnout		45.0	10.8

Swanage North (3098)			
		vote	share
Marsh G. Ms.	Con	0	0.0
Turnout		0.0	0.0

Swanage South (4427)			
		vote	share
Wheeldon J. Ms.*	Con	1,185	76.8
Harding W.	Lab	357	23.2
Turnout		34.0	53.7

Wareham (2656)			
		vote	share
Bird K.	LD	817	45.9
Cummings F.	Con	722	40.5
Huskinson R.	Lab	242	13.6
Turnout		67.1	5.3

Wool (3435)			
		vote	share
Reynolds C. Ms.	Con	806	55.9
Shinn S.	Lab	636	44.1
Turnout		42.0	11.8

Purbeck - 1994

Bere Regis (1808)			
		vote	share
Stone S. Ms.*	Ind	572	71.6
Pearce D.	Con	227	28.4
Turnout		44.5	43.2

Langton (1296)			
		vote	share
Viney D.*	LD	349	53.2
Trite W.	Con	218	33.2
Lovell M.	Ind	89	13.6
Turnout		50.7	20.0

Lytchett Matravers (2178)			
		vote	share
McDonald A.*	Ind	809	69.0
Wise M.	LD	363	31.0
Turnout		53.8	38.1

Lytchett Minster (5957)			
		vote	share
Gainsford P.*	LD	1,406	52.5
Johns P.	Con	983	36.7
Collis D.	Lab	287	10.7
Turnout		44.9	15.8

Swanage South (4470)			
		vote	share
Sutton C.	LD	620	31.3
Meers H. Ms.	Lab	488	24.6
Suttle G.	Ind	457	23.1
Marlow K.*	Con	417	21.0
Turnout		44.5	6.7

Wareham (4711)			
		vote	share
Budd D.*	LD	1,153	71.3
Wheeler B.	Lab	465	28.7
Turnout		34.9	42.5

West Purbeck (1183)			
		vote	share
Bond C. Ms.*	Ind	343	67.0
Turner P.	LD	169	33.0
Turnout		42.0	34.0

Winfrith (1339)			
		vote	share
Debenham B. Ms.*	Ind	411	62.1
Woolf H. Ms.	LD	251	37.9
Turnout		48.0	24.2

Purbeck - 1995

Castle (2535)			
		vote	share
Carter H.*	LD	598	52.2
Bond M.	Con	547	47.8
Turnout		47.0	4.5

Lytchett Minster (6026)			
		vote	share
Osner R.	LD	827	35.3
Moore F. Ms.	Con	822	35.0
Collis D.	Lab	697	29.7
Turnout		39.4	0.2

St. Martin (2189)			
		vote	share
Hedley J. Ms.	Lab	369	46.9
Bond M.*	Ind	259	33.0
Turner P.	LD	158	20.1
Turnout		36.3	14.0

Swanage North (3101)			
		vote	share
Marsh V.*	Ind	755	60.2
Trite W.	Con	500	39.8
Turnout		40.4	20.3

Swanage South (4513)			
		vote	share
Dunn L. Ms.	Lab	625	36.0
Makin C.*	Con	599	34.5
Holmes T.	LD	512	29.5
Turnout		38.5	1.5

Wareham (4708)			
		vote	share
Critchley K.	LD	705	36.1
Huskinson R.	Lab	631	32.3
Patterson C.*	Con	499	25.6
Baker M.	Ind	116	5.9
Turnout		41.5	3.8

Wool (3206)			
		vote	share
Shinn S.	Lab	588	53.6
Woolf H. Ms.	LD	510	46.4
Turnout		35.5	7.1

Purbeck - 1996

Castle (2537)			
		vote	share
Hayward L.*	Con	452	42.6
Williams P.	LD	403	37.9
Ewart S.	Lab	207	19.5
Turnout		41.9	4.6

Lytchett Minster (6019)			
		vote	share
Wise M.	LD	1,101	45.4
Johns P.	Con	869	35.8
Cade R. Ms.	Lab	455	18.8
Turnout		40.0	9.6

St. Martin (2203)			
		vote	share
Aitken E. Ms.*	LD	331	55.4
Tighe A. Ms.	Lab	267	44.6
Turnout		27.4	10.7

Swanage North (3142)			
		vote	share
Trite W.	Con	524	37.5
Marsh G. Ms.*	Ind Con	385	27.5
Watkins C. Ms.	LD	280	20.0
Ferrer M. Ms.	Lab	210	15.0
Turnout		44.7	9.9

Swanage South (4517)			
		vote	share
Wheeldon J. Ms.*	Con	856	51.0
Smith D.	Lab	464	27.6
Welham P. Ms.	LD	360	21.4
Turnout		37.6	23.3

Wareham (4717)			
		vote	share
Bird K.*	LD	787	38.8
Huskinson R.	Lab	616	30.3
Anderson R.	Con	575	28.3
Baker M.	Ind	52	2.6
Turnout		43.1	8.4

Wool (3160)			
		vote	share
Briggs J. Ms.*	LD	593	44.4
Osborn F.	Con	382	28.6
Lefley M.	Lab	361	27.0
Turnout		42.4	15.8

Purbeck - 1998

Bere Regis (1859)			
		vote	share
Stone S. Ms.*	Ind	0	0.0
Turnout		0.0	0.0

Langton (1332)			
		vote	share
Viney D.*	LD	381	76.2
Gillam R.	Ind	119	23.8
Turnout		37.4	52.4

Lytchett Matravers (2426)			
		vote	share
McDonald A.*	Ind	561	68.5
McKechnie J.	LD	174	21.2
Hall C.	Lab	84	10.3
Turnout		33.8	47.3

Lytchett Minster (6030)			
		vote	share
Fry M.	Con	1,144	54.5
Gainsford P.*	LD	613	29.2
Cade R. Ms.	Lab	344	16.4
Turnout		34.6	25.3

Swanage South (4503)			
		vote	share
Easton J. Ms.	Con	594	39.0
Sutton C.*	LD	519	34.1
Rabson C. Ms.	Lab	409	26.9
Turnout		34.0	4.9

Wareham (4704)			
		vote	share
Anderson R.	Con	888	46.2
Budd D.*	LD	773	40.2
Longshaw E. Ms.	Lab	263	13.7
Turnout		40.9	6.0

West Purbeck (1155)			
		vote	share
Rudd E. Ms.	Ind	264	63.3
Williams P.	LD	107	25.7
Davey J.	Lab	46	11.0
Turnout		36.0	37.6

Winfrith (1380)			
		vote	share
Debenham B. Ms.*	Ind	391	81.6
White S.	LD	88	18.4
Turnout		35.0	63.3

Purbeck - 1999

Bere Regis (1596)			
		vote	share
Stone S. Ms.*	Ind	232	38.2
Macdonald-Smith J. Ms.	Con	198	32.6
Maunder C.	Ind	178	29.3
Turnout		39.0	5.6

Castle (1579)			
		vote	share
Hayward L.*	Con	412	66.6
Berriman V. Ms.	LD	207	33.4
Turnout		40.0	33.1

Crech Barrow (1462)			
		vote	share
Cake N.	Con	442	75.6
Simms M. Ms.	Lab	143	24.4
Turnout		41.0	51.1

Langton (1346)			
		vote	share
Lovell M.	Con	315	51.5
Viney D.*	LD	255	41.7
Smith D.	Lab	42	6.9
Turnout		46.7	9.8

Lytchett Matravers (2820) ²			
		vote	share
McDonald A.*	Ind	773	43.4
Gainsford P.	LD	539	30.2
Hyde J.	Con	471	26.4
Turnout		44.0	13.1

Lytchett Minster & Upton East (3172) ²			
		vote	share
Hindley P. Ms.	Con	600	63.6
Palmer S. Ms.	Con	576	-
McKechnie J.	LD	343	36.4
Osner R.*	LD	257	-
Turnout		30.0	27.3

Lytchett Minster & Upton West (2962) ²			
		vote	share
Fry M.*	Con	819	55.1
Johns P.	Con	727	-
Wise M.*	LD	416	28.0
Tighe A. Ms.	Lab	251	16.9
Turnout		42.0	27.1

St. Martin (2181) ²			
		vote	share
Aitken E. Ms.*	Ind	674	43.0
Hedley J. Ms.*	Lab	626	39.9
Bradley D. Ms.	Con	267	17.0
Spedding M. Ms.	Con	262	-
Turnout		43.9	3.1

Swanage North (3228) ²			
		vote	share
Trite W.*	Con	743	38.3
Marsh G. Ms.*	Ind	648	33.4
Miller A.	Con	551	-
Welham P. Ms.	LD	304	15.7
Harris A. Ms.	Lab	246	12.7
Surge J. Ms.	LD	223	-
Turnout		46.9	4.9

Swanage South (4643) ³			
		vote	share
Wheeldon J. Ms.*	Con	913	48.6
Suttle G.	Con	730	-
Roscoe J.	Con	601	-
Sutton C.	LD	534	28.4
Dunn L. Ms.*	Lab	430	22.9
Holmes T.	LD	392	-
O'Donovan H. Ms.	LD	391	-
Rabson C. Ms.	Lab	372	-
Harding L. Ms.	Lab	347	-
Turnout		38.5	20.2

Wareham (4794) ³			
		vote	share
Anderson R.*	Con	898	37.7
Budd D.	LD	852	35.8
Critchley K.*	LD	689	-
Bird K.*	LD	684	-
Sheppard V. Ms.	Con	661	-
Bradly P.	Con	622	-
Russell M.	Ind	357	15.0
Wheeler W. Ms.	Lab	276	11.6
Dubery J.	Lab	257	-
Adams J.	Ind	255	-
Longshaw E. Ms.	Lab	243	-
Turnout		45.1	1.9

West Purbeck (1092)			
		vote	share
Rudd E. Ms.*	Ind	273	76.3
Davey J.	Lab	85	23.7
Turnout		34.0	52.5

Winfrith (1361)			
		vote	share
Woodward N.	Con	0	0.0
Turnout		0.0	0.0

Wool (3029) ²			
		vote	share
Briggs J. Ms.*	LD	573	41.4
Briggs A.	LD	438	-
Carr K. Ms.	Lab	407	29.4
Hipwell A. Ms.	Con	404	29.2
Turnout		45.7	12.0

Purbeck - 2000

Lytchett Matravers (2875)			
		vote	share
Hyde J.	Con	563	54.1
Gainsford P.*	LD	477	45.9
Turnout		37.0	8.3

Lytchett Minster & Upton East (3160)			
		vote	share
Lawton D.	Con	674	69.8
Howlett M.	LD	292	30.2
Turnout		31.0	39.5

Lytchett Minster & Upton West (2995)			
		vote	share
Johns P.*	Con	798	71.9
Osmond E.	LD	312	28.1
Turnout		38.0	43.8

St. Martin (2196)			
		vote	share
Bradly D. Ms.	Con	377	45.6
Green K.	LD	362	43.8
Smith D. Ms.	Ind	87	10.5
Turnout		38.0	1.8

Swanage North (3243)			
		vote	share
Miller A.	Con	738	60.0
Bennett E.	LD	198	16.1
Welham P. Ms.	Ind	187	15.2
Harris A. Ms.	Lab	108	8.8
Turnout		38.8	43.9

Swanage South (4722)			
		vote	share
Roscoe J.*	Con	708	45.5
Dunn L. Ms.	Lab	433	27.8
Holmes T.	LD	415	26.7
Turnout		33.4	17.7

Wareham (4780)			
		vote	share
Critchley K.*	LD	976	53.5
Patterson C.	Con	849	46.5
Turnout		38.8	7.0

Wool (2929)			
		vote	share
Shakesby M.	Con	502	41.7
Briggs A.*	LD	487	40.4
Frake S.	Lab	215	17.9
Turnout		42.0	1.2

Purbeck - 2002

Bere Regis (1566)			
		vote	share
Wharf P.	Ind	0	0.0
Turnout		0.0	0.0

Creech Barrow (1550)			
		vote	share
Cake N.*	Con	329	51.2
Howlett M.	LD	200	31.1
Huskinson R.	Lab	114	17.7
Turnout		41.5	20.1

Langton (1297)			
		vote	share
Lovell M.*	Con	393	53.1
Wilson W.	LD	304	41.1
Van De Zande L.	Lab	43	5.8
Turnout		57.1	12.0

Lytchett Matravers (2898)			
		vote	share
McDonald A.*	Ind	652	53.1
Fox R.	LD	575	46.9
Turnout		43.1	6.3

Swanage South (4662)			
		vote	share
Suttle G.*	Con	717	42.5
Bartlett C. Ms.	Lab	566	33.5
O'Donovan H. Ms.	LD	406	24.0
Turnout		36.4	8.9

Wareham (4732)			
		vote	share
Budd D.*	LD	1,003	42.5
Burns L.	Ind	696	29.5
Patterson J. Ms.	Con	544	23.0
Tighe A. Ms.	Lab	119	5.0
Turnout		50.0	13.0

West Purbeck (1166)			
		vote	share
Rudd E. Ms.*	Ind	279	69.9
Davey J.	Lab	120	30.1
Turnout		34.3	39.8

Winfrith (1316)			
		vote	share
Barnes K.	Con	361	57.3
Osmond E.	LD	269	42.7
Turnout		48.3	14.6

Purbeck - 2003

Castle (1559)			
		vote	share
Duffy P.	LD	554	59.5
Drudrury S.	Con	352	37.8
Cade R. Ms.	Lab	25	2.7
Turnout		59.8	21.7

Lytchett Minster & Upton East (3090)			
		vote	share
Drane F.	LD	610	61.5
Hindley P. Ms.*	Con	382	38.5
Turnout		32.0	23.0

Lytchett Minster & Upton West (2955)			
		vote	share
Starr A.	LD	498	45.6
Piper W.	Con	480	44.0
Collis D.	Lab	114	10.4
Turnout		37.0	1.6

St. Martin (2127)			
		vote	share
Green K.	LD	497	54.3
Russell M.	Con	287	31.3
Selby Bennett J.	Lab	132	14.4
Turnout		43.2	22.9

Swanage North (3275)			
		vote	share
Trite W.*	Con	908	60.7
Carter H.	LD	409	27.4
Van De Zande L.	Lab	178	11.9
Turnout		46.0	33.4

Swanage South (4680)			
		vote	share
Wheeldon J. Ms.*	Con	920	50.3
Wootton J.	LD	497	27.2
Rabson C. Ms.	Lab	413	22.6
Turnout		39.7	23.1

Wareham (4699)			
		vote	share
Osmond E.	LD	715	33.6
Burns L.	Ind	667	31.4
Anderson R.*	Con	572	26.9
Huskinson R.	Lab	171	8.0
Turnout		45.3	2.3

Wool (3096)			
		vote	share
Hodder R. Ms.	Con	702	70.0
Davey J.	Lab	301	30.0
Turnout		32.6	40.0

Purbeck - 2004

Lytchett Matravers (2878)			
		vote	share
Hyde J.*	Con	781	56.6
Peacock M.	LD	598	43.4
Turnout		48.3	13.3

Lytchett Minster & Upton East (3074)			
		vote	share
Starr W. Ms.	LD	570	52.2
Hindley P. Ms.	Con	523	47.8
Turnout		36.2	4.3

Lytchett Minster & Upton West (2976)			
		vote	share
Johns P.*	Con	848	59.1
Jones A. Ms.	LD	502	35.0
Collis D.	Lab	86	6.0
Turnout		48.6	24.1

St. Martin (2119)			
		vote	share
Ezzard B. Ms.	LD	523	50.8
Russell M.	Con	432	41.9
Selby Bennett J.	Lab	75	7.3
Turnout		48.8	8.8

Swanage North (3290)			
		vote	share
Miller A.*	Con	904	55.2
Hadley M.	LD	549	33.5
Rabson C. Ms.	Lab	184	11.2
Turnout		50.2	21.7

Swanage South (4666)			
		vote	share
Bright C.	Con	727	35.6
Bartlett C. Ms.	Lab	614	30.0
Scull D.	LD	455	22.3
Harvey K.	UKIP	248	12.1
Turnout		44.0	5.5

Wareham (4653)			
		vote	share
Anderson R.	Con	1,132	50.9
Critchley K.*	LD	1,093	49.1
Turnout		48.7	1.8

Wool (3239)			
		vote	share
Shakesby M.*	Con	587	48.6
Barnes J.	UKIP	293	24.3
Webb J. Ms.	LD	169	14.0
Davey J.	Lab	159	13.2
Turnout		37.6	24.3

Purbeck - 2006

Bere Regis (1589)			
		vote	share
Wharf P.*	Ind	0	0.0
Turnout		0.0	0.0

Creech Barrow (1559)			
		vote	share
Cake N.*	Con	487	69.5
Critchley K.	LD	146	20.8
Killingback J.	Lab	68	9.7
Turnout		45.2	48.6

Langton (1319)			
		vote	share
Lovell M.*	Con	485	71.9
Fazekas S.	LD	130	19.3
Van De Zande L.	Lab	60	8.9
Turnout		51.7	52.6

Lytchett Matravers (2945)			
		vote	share
Peacock M.	LD	796	51.9
Gibb C.	Con	739	48.1
Turnout		52.3	3.7

Swanage South (4737)			
		vote	share
Suttle G.*	Con	894	46.0
Chennell A. Ms.	LD	532	27.4
Bartlett C. Ms.	Lab	516	26.6
Turnout		41.3	18.6

Wareham (4649)			
		vote	share
Budd D.*	LD	1,339	60.4
Jaeger B.	Con	879	39.6
Turnout		47.9	20.7

West Purbeck (1133)			
		vote	share
Mills T.	Con	396	71.4
Davey J.	Lab	159	28.6
Turnout		50.0	42.7

Winfrith (1350)			
		vote	share
Barnes K.*	Con	505	80.9
Redmond S.	Lab	119	19.1
Turnout		47.0	61.9

Purbeck - 2007

Castle (1573)			
		vote	share
Dragon N.	Ind	547	80.7
Selby B.	Lab	131	19.3
Turnout		44.0	61.4

Lytchett Minster & Upton East (3175)			
		vote	share
Drane F.*	LD	778	61.7
Williams S.	Con	483	38.3
Turnout		39.9	23.4

Lytchett Minster & Upton West (2976)			
		vote	share
Starr A.*	LD	734	50.5
Pipe B.	Con	720	49.5
Turnout		48.9	1.0

St. Martin (2177)			
		vote	share
Green K.*	LD	568	57.1
Russell M.	Con	333	33.5
Webb J. Ms.	Ind	93	9.4
Turnout		45.6	23.6

Swanage North (3415)			
		vote	share
Trite W.*	Con	862	51.1
Chennell A. Ms.	LD	422	25.0
Moore T. Ms.	UKIP	221	13.1
Rabson C.	Lab	182	10.8
Turnout		49.6	26.1

Swanage South (4812)			
		vote	share
Pratt M.	Con	734	40.0
Hadley M.	LD	539	29.4
Holmes T.	Lab	336	18.3
Hobson M.	UKIP	226	12.3
Turnout		38.5	10.6

Wareham (4689)			
		vote	share
Osmond E.*	LD	1,243	62.2
Jaeger B.	Con	754	37.8
Turnout		42.9	24.5

Wool (3354)			
		vote	share
Goldsock S.	LD	677	46.4
Hodder R. Ms.*	Con	503	34.5
Barnes J.	UKIP	173	11.8
Huskinson L. Ms.	Lab	107	7.3
Turnout		43.6	11.9

Purbeck - 2008

Lytchett Matravers (2931) ²			
		vote	share
Colvey M.	LD	785	50.2
Cross D.	Con	729	46.6
Brenton A. Ms.	LD	715	-
Gibb C.	Con	692	-
Selby Bennett J.	Lab	50	3.2
Turnout		52.7	3.6

Lytchett Minster & Upton East (3094)			
		vote	share
Starr W. Ms.*	LD	692	57.6
Williams S.	Con	509	42.4
Turnout		39.1	15.2

Lytchett Minster & Upton West (2987)			
		vote	share
Johns P.*	Con	829	65.3
Howlett M.	LD	391	30.8
Cade R. Ms.	Lab	50	3.9
Turnout		42.6	34.5

St. Martin (2153)			
		vote	share
Ezzard B. Ms.*	LD	563	56.2
Thomas J. Ms.	Con	438	43.8
Turnout		46.5	12.5

Swanage North (3360)			
		vote	share
Marsh G. Ms.	Con	917	59.3
Keeling P. Ms.	LD	497	32.1
Storey M. Ms.	Lab	132	8.5
Turnout		46.2	27.2

Swanage South (4816)			
		vote	share
Patrick A. Ms.	Con	932	50.6
Bright C.*	LD	561	30.5
Larthe De			
Langladure M. Ms.	Lab	348	18.9
Turnout		38.5	20.2

Wareham (4611)			
		vote	share
Critchley K.	LD	1,245	57.6
Anderson R.*	Con	915	42.4
Turnout		47.0	15.3

Wool (3327)			
		vote	share
Holmes G.	LD	725	47.1
Shakesby M.*	Con	438	28.4
Grey-Hodder R. Ms.	Ind	304	19.7
Phillips R. Ms.	Lab	73	4.7
Turnout		46.5	18.6

Purbeck - 2010

Bere Regis (1618)			
		vote	share
Wharf P.*	Ind	0	0.0
Turnout		0.0	0.0

Creech Barrow (1555)			
		vote	share
Cake N.*	Con	822	73.3
Huskinson R.	Lab	300	26.7
Turnout		73.8	46.5

Langton (1379)			
		vote	share
Lovell M.*	Con	536	52.4
Knight W.	LD	432	42.3
Van De Zande L.	Lab	54	5.3
Turnout		74.3	10.2

Lytchett Matravers (3042)			
		vote	share
Gracey M.	LD	1,178	52.6
Cross D.	Con	1,060	47.4
Turnout		74.8	5.3

Swanage South (4888)			
		vote	share
Suttle G.*	Con	1,391	42.3
Hadley M.	LD	945	28.8
Stanford M.	Lab	735	22.4
Hobson M.	UKIP	214	6.5
Turnout		67.6	13.6

Wareham (4625)			
		vote	share
Budd D.*	LD	1,810	55.1
Thomas J. Ms.	Con	1,204	36.6
Simpson K.	UKIP	273	8.3
Turnout		71.5	18.4

West Purbeck (1181)			
		vote	share
Quinn B.	Con	540	67.8
Davey J.	Lab	256	32.2
Turnout		69.6	35.7

Winfrith (1382)			
		vote	share
Barnes K.*	Con	609	59.1
Williams A. Ms.	LD	422	40.9
Turnout		75.7	18.1

Purbeck - 2011

Castle (1562)			
		vote	share
Dragon N.*	Ind	441	50.6
Sides S. Ms.	Con	332	38.1
Van De Zande L.	Lab	99	11.4
Turnout		56.3	12.5

Lytchett Minster & Upton East (3186)			
		vote	share
Drane F.*	LD	788	64.5
Sequeira R.	Con	433	35.5
Turnout		39.5	29.1

Lytchett Minster & Upton West (3053)			
		vote	share
Pipe W.	Con	834	54.4
Starr A.*	LD	698	45.6
Turnout		51.0	8.9

St. Martin (2188)			
		vote	share
Green K.*	LD	541	51.1
Hutton D.	Con	385	36.4
Simpson K.	UKIP	133	12.6
Turnout		48.4	14.7

Swanage North (3412)

		vote	share
Trite W.*	Con	1,192	65.6
Clarke E. Ms.	LD	340	18.7
Harding L. Ms.	Lab	285	15.7
Turnout		53.9	46.9

Swanage South (4817)

		vote	share
Pratt M.*	Con	1,123	49.5
Roker R.	Lab	629	27.7
Hadley M.	LD	518	22.8
Turnout		47.1	21.8

Wareham (4568)

		vote	share
Osmond E.*	LD	1,124	50.4
Wiggins M.	Con	816	36.6
Hobson M.	UKIP	288	12.9
Turnout		49.6	13.8

Wool (3700)

		vote	share
Goldsack S.*	LD	808	47.7
Ley R.	Con	662	39.1
Douglas G.	Lab	224	13.2
Turnout		46.4	8.6

Purbeck - 2012**Lytchett Matravers (3012)**

		vote	share
Taylor J.	LD	623	51.4
Maitland I.	Con	588	48.6
Turnout		40.5	2.9

Lytchett Minster & Upton East (3142)

		vote	share
Tilling C. Ms.	LD	528	57.9
Pipe C. Ms.	Con	384	42.1
Turnout		29.6	15.8

Lytchett Minster & Upton West (3005)

		vote	share
Johns P.*	Con	618	57.6
Starr A.	LD	455	42.4
Turnout		36.0	15.2

St. Martin (2166)

		vote	share
Ezzard B. Ms.*	LD	511	65.9
Hutton D.	Con	265	34.1
Turnout		36.4	31.7

Swanage North (3331)

		vote	share
Marsh G. Ms.*	Con	778	60.7
Clark P.	LD	273	21.3
Harding L. Ms.	Lab	231	18.0
Turnout		38.8	39.4

Swanage South (4747)

		vote	share
Patrick A. Ms.*	Con	784	48.9
Roker R.	Lab	570	35.5
Hadley M.	LD	250	15.6
Turnout		34.1	13.3

Wareham (4550)

		vote	share
Critchley K.*	LD	954	57.0
Wiggins M.	Con	719	43.0
Turnout		37.4	14.0

Wool (3748)

		vote	share
Holmes G.*	LD	596	54.0
Ley R.	Con	366	33.2
Holmes T.	Lab	142	12.9
Turnout		29.8	20.8

