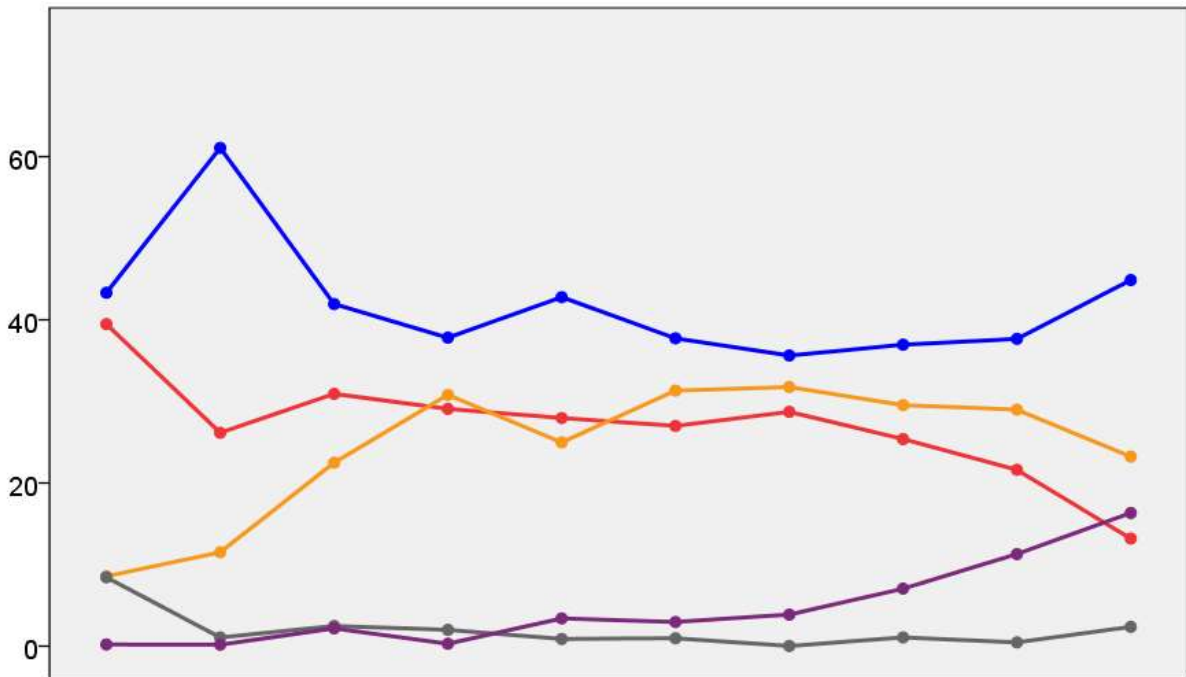


Oxfordshire County Council Election Results 1973-2009



Colin Rallings and Michael Thrasher
The Elections Centre
Plymouth University

The information contained in this report has been obtained from a number of sources. Election results from the immediate post-reorganisation period were painstakingly collected by Alan Willis largely, although not exclusively, from local newspaper reports. From the mid-1980s onwards the results have been obtained from each local authority by the Elections Centre. The data are stored in a database designed by Lawrence Ware and maintained by Brian Cheal and others at Plymouth University. Despite our best efforts some information remains elusive whilst we accept that some errors are likely to remain. Notice of any mistakes should be sent to elections@plymouth.ac.uk. The results sequence can be kept up to date by purchasing copies of the annual Local Elections Handbook, details of which can be obtained by contacting the email address above.

Front cover: the graph shows the distribution of percentage vote shares over the period covered by the results. The lines reflect the colours traditionally used by the three main parties. The grey line is the share obtained by Independent candidates while the purple line groups together the vote shares for all other parties.

Rear cover: the top graph shows the percentage share of council seats for the main parties as well as those won by Independents and other parties. The lines take account of any by-election changes (but not those resulting from elected councillors switching party allegiance) as well as the transfers of seats during the main round of local election.

The lower graph shows for each main round of local elections the overall percentage turnout (solid line), the percentage of women candidates standing at (dotted line) and the percentage of women among those elected (hashed line).

Oxford (Blackbird Leys) (5434)			
		vote	share
Gillians A.	Lab	1,306	70.6
Wilson R.	Con	543	29.4
Turnout		34.0	41.3
Oxford (Cherwell) (4851)			
		vote	share
Simpson W.	Con	1,112	46.6
Ward G.	Lab	695	29.1
Stanger F.	Lib	579	24.3
Turnout		49.2	17.5
Oxford (Donnington) (3718)			
		vote	share
Williamson A.	Lab	1,189	66.8
Cave T.	Con	592	33.2
Turnout		47.9	33.5
Oxford (East) (5069)			
		vote	share
Butler M. Ms.	Lib	1,016	41.9
Dunbar P. Ms.	Lab	721	29.7
Kane F.	Con	689	28.4
Turnout		47.9	12.2
Oxford (Headlington) (5377)			
		vote	share
Pickstock F.	Lab	1,008	44.0
Ellis K. Ms.	Con	930	40.6
Wigney L.	Lib	351	15.3
Turnout		42.6	3.4
Oxford (Iffley) (4463)			
		vote	share
Parker J.	Lab	1,331	55.9
Yardley P. Ms.	Con	1,052	44.1
Turnout		53.4	11.7
Oxford (Marston) (5121)			
		vote	share
Carr D. Ms.	Lab	1,225	57.4
Pratt R.	Con	610	28.6
Elphick O.	Lib	298	14.0
Turnout		41.7	28.8
Oxford (North) (7699)			
		vote	share
Hatch J.	Con	898	38.2
Opie R.	Lab	755	32.1
Roaf D.	Lib	697	29.7
Turnout		30.5	6.1
Oxford (Quarry) (5021)			
		vote	share
Hamilton Q. Ms.	Con	978	51.1
Ellis N.	Lab	644	33.7
Forbes M. Ms.	Lib	291	15.2
Turnout		38.1	17.5
Oxford (South) (5053)			
		vote	share
Howard-Johnston J.	Lab	907	44.5
Hawkes-Bayliss R.	Lib	588	28.9
Woodward G.	Con	543	26.6
Turnout		40.3	15.7
Oxford (St. Clements) (5151)			
		vote	share
Ramsey A.	Lab	849	41.8
Meadows T.	Con	665	32.7
Fry F.	Lib	373	18.3
Panes A.	Comm	146	7.2
Turnout		39.5	9.1
Oxford (Temple Cowley) (5129)			
		vote	share
Nimmo H.	Lab	1,142	48.0
Ingram F.	Con	1,056	44.4
Ram J.	Lib	182	7.6
Turnout		46.4	3.6

Oxford (West) (4973)			
		vote	share
Gibbs O. Ms.	Lab	1,320	60.2
Stanton-King R.	Con	550	25.1
Hannon J.	Lib	323	14.7
Turnout		44.1	35.1
Oxford (Wolvercote) (4715)			
		vote	share
Spokes A. Ms.	Con	1,174	50.6
Vaughan J. Ms.	Lab	594	25.6
Davies I.	Lib	552	23.8
Turnout		49.2	25.0
Oxford (Wood Farm) (4856)			
		vote	share
Walsh R.	Lab	1,101	56.4
Cantwell A.	Con	637	32.6
Squires G.	Lib	213	10.9
Turnout		40.2	23.8
Ploughley No. 1 (4747)			
		vote	share
Groves R.	Lab	1,300	60.2
Wyatt P. Ms.	Con	859	39.8
Turnout		45.5	20.4
Ploughley No. 2 (5731)			
		vote	share
Ratcliffe E. Ms.	Con	1,531	52.0
Puleston M.	Lab	1,413	48.0
Turnout		51.4	4.0
Ploughley No. 3 (4650)			
		vote	share
Jones R.	Con	992	45.1
Hedge J.	Lab	638	29.0
Cooper C.	Lib	571	25.9
Turnout		47.3	16.1
Ploughley No. 4 (4611)			
		vote	share
Keegs G.	Lab	1,376	57.5
Whiteley R.	Con	1,016	42.5
Turnout		51.9	15.1
Stanton St. John (6435)			
		vote	share
Weir R.	Con	1,568	54.8
Sutton D.	Lab	1,291	45.2
Turnout		44.4	9.7
Thame (4203)			
		vote	share
Gadge L.	Ind	727	52.3
Barclay T.	Con	664	47.7
Turnout		33.1	4.5
Wallingford (4300)			
		vote	share
Woolley A.	Con	898	54.6
Brooke I. Ms.	Lab	747	45.4
Turnout		38.3	9.2
Wantage (5502)			
		vote	share
Spurway A.	Lab	1,272	46.9
Robinson H.	Con	1,102	40.7
Brew H.	Ind	336	12.4
Turnout		49.3	6.3
Wantage Rural No. 1 (5422)			
		vote	share
Mayne C.	Con	1,778	58.1
Crow J. Ms.	Lab	1,282	41.9
Turnout		56.4	16.2

Wantage Rural No. 2 (5716)			
		vote	share
Burrells W.	Con	1,586	52.0
Smith K.	Lab	1,465	48.0
Turnout		53.4	4.0
Watlington (2971)			
		vote	share
Montgomery A.	Con	570	40.7
Moseley B.	Lab	337	24.1
Sparrow R.	Lib	320	22.8
Keen R.	Ind Con	174	12.4
Turnout		47.2	16.6
Witney (North) (3022)			
		vote	share
Redwood J.	Con	668	44.4
Mulraney E.	Lab	615	40.8
Preston W.	Ind	223	14.8
Turnout		49.8	3.5
Witney (South) (5725)			
		vote	share
Kitto H.	Ind	1,212	54.2
Cooper E.	Lab	1,023	45.8
Turnout		39.0	8.5
Witney Rural No. 1 (Eynsham & Stand) (4572)			
		vote	share
Bury J.	Ind	1,164	63.6
Timms P.	Lab	667	36.4
Turnout		40.0	27.1
Witney Rural No. 2 (4690)			
		vote	share
Bogdanor V.	Con	1,027	41.1
Hunt A. Ms.	Lab	773	30.9
Bushby W.	Ind	698	27.9
Turnout		53.3	10.2
Witney Rural No. 3 (4303)			
		vote	share
Thomson D. Ms.	Ind	1,144	71.9
Mullis K.	Lab	448	28.1
Turnout		37.0	43.7
Witney Rural No. 4 (4597)			
		vote	share
Streatfield R.	Con	994	67.8
Liddle R.	Lab	472	32.2
Turnout		31.9	35.6
Witney Rural No. 5 (4696)			
		vote	share
Thomson J.	Con	1,372	64.1
Oakeshott M.	Lab	767	35.9
Turnout		45.5	28.3

Oxfordshire 1977

Abingdon No. 1 (Caldecott) (4810)

		vote	share
Holt J.	Con	1,130	60.0
Campbell W.	Lab	753	40.0
Turnout		39.3	20.0

Abingdon No. 2 (5106)

		vote	share
Westall A.*	Con	1,349	51.9
Blair I.	Lib	884	34.0
Enticott J.	Lab	367	14.1
Turnout		51.0	17.9

Abingdon No. 3 (5027)

		vote	share
Steggles L.	Con	1,287	67.1
Hannigan J.	Lab	630	32.9
Turnout		38.5	34.3

Banbury No. 1 (4240)

		vote	share
Spencer D.	Con	887	55.5
Kent D. Ms.	Lab	710	44.5
Turnout		37.7	11.1

Banbury No. 2 (6812)

		vote	share
Hadfield B. Ms.	Con	1,892	66.7
Ankers R.	Lab	943	33.3
Turnout		41.7	33.5

Banbury No. 3 (Neithrop) (4957)

		vote	share
Wilton G.	Con	1,183	54.2
Williams A.*	Lab	1,000	45.8
Turnout		44.2	8.4

Banbury No. 4 (Ruscote) (6340)

		vote	share
Parsons P.	Con	1,483	52.3
Booth A.*	Lab	1,353	47.7
Turnout		44.8	4.6

Banbury Rural No. 1 (4959)

		vote	share
Mann C.	Con	0	0.0
Turnout		0.0	0.0

Banbury Rural No. 2 (4834)

		vote	share
Clifton H. Ms.*	Con	0	0.0
Turnout		0.0	0.0

Banbury Rural No. 3 (4857)

		vote	share
Mulley P.*	Con	0	0.0
Turnout		0.0	0.0

Benson (5500)

		vote	share
Deed B.*	Ind	0	0.0
Turnout		0.0	0.0

Bicester (8126)

		vote	share
Hollis J.*	Con	2,290	69.8
May C.	Lab	594	18.1
Charlton D.	Lib	398	12.1
Turnout		40.6	51.7

Chinnor & Tetsworth (5853)

		vote	share
Barlow C. Ms.	Con	1,714	71.6
Lawrence P.	Lib	679	28.4
Turnout		41.1	43.3

Chipping Norton (3505)

		vote	share
Colston O.	Con	885	51.8
Baker P.	Lab	543	31.8
Marritt P. Ms.	Lib	282	16.5
Turnout		49.0	20.0

Chipping Norton Rural No. 1 (5473)

		vote	share
Banbury J.	Con	1,495	57.4
White M.	Lib	707	27.2
Haynes R. Ms.	Lab	401	15.4
Turnout		47.6	30.3

Chipping Norton Rural No. 2 (5610)

		vote	share
Juler E. Ms.*	Ind	0	0.0
Turnout		0.0	0.0

Chipping Norton Rural No. 3 (4965)

		vote	share
Edginton H.	Con	1,571	68.6
Ware F.	Lib	720	31.4
Turnout		46.3	37.1

Cumnor (5174)

		vote	share
Wilcox A.	Con	1,346	72.1
Hall D. Ms.	Ind	522	27.9
Turnout		36.3	44.1

Didcot (Manor) (5624)

		vote	share
Williams E.	Con	1,708	64.8
Hitchcock L.*	Lab	928	35.2
Turnout		46.9	29.6

Didcot (Mereland) (3992)

		vote	share
Duggan B.*	Lab	981	51.5
Bryan P.	Con	924	48.5
Turnout		47.8	3.0

Dorchester (4987)

		vote	share
Farrant H.*	Con	1,247	73.7
Johnson D. Ms.	Lib	446	26.3
Turnout		34.1	47.3

Drayton (5092)

		vote	share
Norman C.*	Con	1,667	61.6
Mackenzie M. Ms.	Lab	1,037	38.4
Turnout		53.2	23.3

Faringdon No. 1 (5308)

		vote	share
Douglass N.*	Con	1,845	78.0
Inman P. Ms.	Lab	520	22.0
Turnout		44.5	56.0

Faringdon No. 2 (5412)

		vote	share
Bond E.*	Con	0	0.0
Turnout		0.0	0.0

Great Milton & Wheatley (6668)

		vote	share
Audley-Miller P.*	Con	1,937	67.8
Hedge J.	Lab	550	19.3
Semlyen J. Ms.	Lib	370	13.0
Turnout		43.0	48.5

Henley (North) (4525)

		vote	share
Cresswell E.	Con	1,156	72.2
Wyn-Roberts W. Ms.	Lib	446	27.8
Turnout		35.5	44.3

Henley (South) (4150)

		vote	share
Walden D.	Con	1,323	75.2
Owen M.	Lib	437	24.8
Turnout		42.5	50.3

Henley Rural No. 1a (4331)

		vote	share
Darlow F.*	Con	1,593	82.6
Walker J.	Lib	335	17.4
Turnout		44.6	65.2

Henley Rural No. 2 (5356)

		vote	share
Crook A.*	Con	1,713	77.5
Blount C.	Lib	496	22.5
Turnout		41.4	55.1

Henley Rural No. 3 (4237)

		vote	share
Denning F.*	Lib	1,132	52.6
Fulford E.	Con	1,020	47.4
Turnout		50.9	5.2

Henley Rural No. 5 (4149)

		vote	share
Riley J.*	Ind	0	0.0
Turnout		0.0	0.0

Hinksey (4080)

		vote	share
Brogden J.*	Con	1,115	76.7
Gee W.	Lab	339	23.3
Turnout		35.8	53.4

Hormer (5872)

		vote	share
Francis J.*	Con	1,494	52.7
Fogarty M.	Lib	1,341	47.3
Turnout		48.3	5.4

Littlemore (6187)

		vote	share
Zinkin S. Ms.	Con	1,077	49.7
Ledger B. Ms.*	Lab	968	44.7
Elson G.	Lib	79	3.6
Johnson P.	Ind Li	41	1.9
Turnout		35.1	5.0

Marcham (5426)

		vote	share
Hook B.*	Con	1,804	85.8
McGivan A.	Lab	298	14.2
Turnout		39.0	71.6

Moreton (6623)

		vote	share
Caruth D.	Con	2,101	77.2
MaccDougall B. Ms.	Lab	622	22.8
Turnout		41.2	54.3

Oxford (Blackbird Leys) (5879)

		vote	share
Falconer J.	Con	1,059	49.2
Gillians A.*	Lab	1,015	47.1
Wicks L. Ms.	Lib	79	3.7
Turnout		36.8	2.0

Oxford (Cherwell) (4945)

		vote	share
Simpson W.*	Con	1,477	63.6
Carter K.	Lab	487	21.0
Stanger F.	Lib	357	15.4
Turnout		47.0	42.7

Oxford (Donnington) (4013)			
		vote	share
Williamson A.*	Lab	1,145	54.3
Porter R.	Con	899	42.6
Godfrey K.	Lib	66	3.1
Turnout		52.1	11.7
Oxford (East) (5056)			
		vote	share
Kane F.	Con	952	46.1
Hotson A.	Lab	641	31.0
Butler M. Ms.*	Lib	472	22.9
Turnout		40.9	15.1
Oxford (Headlington) (5637)			
		vote	share
Ellis K. Ms.	Con	1,546	59.2
Dent A.	Lab	1,066	40.8
Turnout		46.4	18.4
Oxford (Iffley) (4570)			
		vote	share
Yardley P. Ms.	Con	1,276	51.5
Parker J.*	Lab	1,204	48.5
Turnout		54.5	2.9
Oxford (Marston) (4893)			
		vote	share
Harris R.	Con	1,355	51.3
Pickstock F.	Lab	1,084	41.1
Willis I.	Lib	201	7.6
Turnout		54.0	10.3
Oxford (North) (10183)			
		vote	share
Peach J.	Con	1,990	46.1
Paul M. Ms.	Lab	1,454	33.7
Roaf D.	Lib	869	20.1
Turnout		42.6	12.4
Oxford (Quarry) (5265)			
		vote	share
Hamilton Q. Ms.*	Con	1,488	72.5
Duncan J.	Lab	565	27.5
Turnout		39.1	45.0
Oxford (South) (5053)			
		vote	share
Todd J. Ms.	Con	1,146	51.3
Dyer D.	Lab	757	33.9
Elvin J.	Lib	333	14.9
Turnout		44.5	17.4
Oxford (St. Clements) (5209)			
		vote	share
Tannant B.	Con	1,042	49.2
Adams P.	Lab	756	35.7
Brooker R.	Lib	319	15.1
Turnout		40.9	13.5
Oxford (Temple Cowley) (5297)			
		vote	share
Ingram F.	Con	1,528	59.6
Power J.	Lab	1,036	40.4
Turnout		48.7	19.2
Oxford (West) (5285)			
		vote	share
Gibbs O. Ms.*	Lab	1,177	47.3
Hunter N.	Con	1,143	45.9
Hannon J.	Lib	169	6.8
Turnout		47.3	1.4
Oxford (Wolvercote) (4740)			
		vote	share
Spokes A. Ms.*	Con	1,516	67.6
Gotch M.	Lab	527	23.5
Birdwood D. Ms.	Lib	199	8.9
Turnout		47.4	44.1

Oxford (Wood Farm) (4721)			
		vote	share
Campbell J. Ms.	Con	935	47.6
Walsh R.*	Lab	844	43.0
Gorman C. Ms.	Ind	185	9.4
Turnout		41.6	4.6
Ploughley No. 1 (5114)			
		vote	share
Prestidge B.	Con	1,379	60.3
Groves R.*	Lab	907	39.7
Turnout		44.8	20.6
Ploughley No. 2 (6134)			
		vote	share
Ratcliffe E. Ms.*	Con	1,604	54.5
Ferrick G.	Lab	700	23.8
Pinion W.	Lib	638	21.7
Turnout		48.1	30.7
Ploughley No. 3 (5155)			
		vote	share
Jones R.*	Con	1,559	76.8
Eumorfopoulos R.	Lib	472	23.2
Turnout		39.6	53.5
Ploughley No. 4 (4554)			
		vote	share
Von Maltzahn E.	Con	1,334	62.2
Reiss R. Ms.	Lab	809	37.8
Turnout		47.1	24.5
Stanton St. John (6450)			
		vote	share
Ring G.	Con	1,764	61.6
Graham C.	Lab	1,099	38.4
Turnout		44.5	23.2
Thame (5177)			
		vote	share
Birch Reynardson P. Ms.	Con	1,112	53.4
Brook I.	Lib	771	37.0
Slowe P.	Lab	199	9.6
Turnout		40.4	16.4
Wallingford (4537)			
		vote	share
Woolley A.*	Con	1,039	62.6
Phillips W.	Lib	620	37.4
Turnout		36.6	25.3
Wantage (5642)			
		vote	share
Knight H.	Con	1,280	51.2
Spurway A.*	Lab	1,220	48.8
Turnout		44.5	2.4
Wantage Rural No. 1 (5377)			
		vote	share
Clarke E.	Con	2,245	75.4
Curry D.	Lab	733	24.6
Turnout		55.6	50.8
Wantage Rural No. 2 (6924)			
		vote	share
Burrells W.*	Con	1,957	60.8
Lester A.	Lab	1,260	39.2
Turnout		46.6	21.7
Watlington (2613)			
		vote	share
Montgomery A.*	Con	814	78.6
Maunder B.	Lab	222	21.4
Turnout		39.8	57.1

Witney (North) (3380)			
		vote	share
Cheeseman B. Ms.	Con	766	56.5
Saunders M.	Lab	363	26.8
Grotrian L. Ms.	Lib	226	16.7
Turnout		40.5	29.7
Witney (South) (5978)			
		vote	share
Baston P.	Lib	975	38.7
Armstrong J.	Con	942	37.4
Cooper E.	Lab	604	24.0
Turnout		42.6	1.3
Witney Rural No. 1 (Eynsham & Stand) (5018)			
		vote	share
Adlard C.	Con	1,078	47.9
Timms P.	Ind	499	22.2
Willey G.	Lib	463	20.6
Wastie D.	Ind Con	212	9.4
Turnout		45.9	25.7
Witney Rural No. 2 (5045)			
		vote	share
Shaw D.	Con	1,585	72.1
Hunt A. Ms.	Lab	612	27.9
Turnout		43.6	44.3
Witney Rural No. 3 (4657)			
		vote	share
Roberts M.	Con	1,417	62.6
Newman W.	Lab	533	23.6
Stubbings B.	Ind	312	13.8
Turnout		48.7	39.1
Witney Rural No. 4 (5641)			
		vote	share
Streatfield R.*	Con	1,316	74.7
Ridout N.	Lib	316	17.9
Parker F. Ms.	Lab	130	7.4
Turnout		31.3	56.8
Witney Rural No. 5 (5082)			
		vote	share
Thomson J.*	Con	1,665	83.1
Fitchett K.	Lab	338	16.9
Turnout		39.5	66.3

Oxfordshire 1981

Abingdon No. 1 (Caldecott) (5363)			
		vote	share
Jacottet J.	Lab	1,085	44.7
Lewis G.	Con	734	30.2
Smith R.	Lib	611	25.1
Turnout		45.3	14.4
Abingdon No. 2 (5751)			
		vote	share
Blair I.	Lib	1,388	49.2
Westall A.*	Con	978	34.6
Park D.	Lab	366	13.0
Taylor P.	Ecol	91	3.2
Turnout		49.3	14.5
Abingdon No. 3 (5105)			
		vote	share
Steggles L.*	Con	845	41.9
Jillard B. Ms.	Lib	706	35.0
Wagstaffe J.	Lab	466	23.1
Turnout		39.7	6.9
Banbury No. 1 (4230)			
		vote	share
Fisher P.	Lab	1,357	67.3
Spencer D.*	Con	479	23.8
Bell S.	Lib	179	8.9
Turnout		47.6	43.6

Banbury No. 2 (7694)			
		vote	share
Hadfield B. Ms.*	Con	1,218	40.6
Husk D.	Lab	1,033	34.4
Fisher G.	Lib	655	21.8
Cook D.	Ecol	97	3.2
Turnout		39.0	6.2
Banbury No. 3 (Neithrop) (5106)			
		vote	share
Humphries W. Ms.	Lab	1,204	63.1
Wilton G.*	Con	705	36.9
Turnout		37.4	26.1
Banbury No. 4 (Ruscote) (7631)			
		vote	share
Steer J.	Lab	2,021	67.2
Bartlett P. Ms.	Con	424	14.1
Ankers R.	Ind Soc Dem	306	10.2
Slatter C.	Lib	258	8.6
Turnout		39.4	53.1
Banbury Rural No. 1 (5290)			
		vote	share
Mann C.*	Con	1,242	51.4
Mabbs F.	Lib	794	32.8
Le Mare P.	Lab	382	15.8
Turnout		45.8	18.5
Banbury Rural No. 2 (5251)			
		vote	share
Clifton H. Ms.*	Con	1,298	53.2
Brierley C. Ms.	Lib	586	24.0
Cornelius D.	Lab	556	22.8
Turnout		46.5	29.2
Banbury Rural No. 3 (4688)			
		vote	share
Molyneux J.	Con	1,198	51.9
Twigg J.	Lib	557	24.1
Bullard D. Ms.	Lab	554	24.0
Turnout		49.3	27.8
Benson (5742)			
		vote	share
Deed B.*	Ind	1,448	68.8
Turner D.	Lib	397	18.9
Crabtree R.	Lab	260	12.4
Turnout		36.8	49.9
Bicester (9062)			
		vote	share
Hollis J.*	Con	1,587	41.3
Porter E.	Lab	1,470	38.2
Parsons J.	Lib	787	20.5
Turnout		42.6	3.0
Chinnor & Tetsworth (6172)			
		vote	share
Barlow C. Ms.*	Con	1,272	50.4
Hawkins W. Ms.	Lib	633	25.1
Wilson G.	Lab	617	24.5
Turnout		41.0	25.3
Chipping Norton (3645)			
		vote	share
Hannis J.	Ind	846	42.6
Latcham H. Ms.	Lab	835	42.0
White A. Ms.	Lib	306	15.4
Turnout		54.8	0.6
Chipping Norton Rural No. 1 (5578)			
		vote	share
Banbury J.*	Con	1,172	42.1
Shaw J. Ms.	Lib	993	35.7
Williams V. Ms.	Lab	619	22.2
Turnout		50.0	6.4

Chipping Norton Rural No. 2 (5758)			
		vote	share
Juler E. Ms.*	Ind	1,710	70.3
Stewart S. Ms.	Lab	723	29.7
Turnout		42.5	40.6
Chipping Norton Rural No. 3 (5344)			
		vote	share
Edginton H.*	Con	1,332	56.7
Baker K.	Lib	1,016	43.3
Turnout		44.2	13.5
Cumnor (5239)			
		vote	share
Wilcox A.*	Con	1,381	67.9
Plaskitt J.	Lab	654	32.1
Turnout		39.1	35.7
Didcot (Manor) (5764)			
		vote	share
Hitchcock L.	Lab	1,401	53.9
Daukes O. Ms.	Con	1,196	46.1
Turnout		45.3	7.9
Didcot (Mereland) (4561)			
		vote	share
Duggan B.*	Lab	1,309	70.0
Swanborough H.	Con	561	30.0
Turnout		41.2	40.0
Dorchester (4933)			
		vote	share
Farrell C.	Con	848	40.6
Booth A.	Lab	713	34.1
Drinkwater R.	Lib	527	25.2
Turnout		42.3	6.5
Drayton (5218)			
		vote	share
Mackenzie M. Ms.	Lab	1,508	53.7
Gallagher-Daggit G.	Con	1,299	46.3
Turnout		54.0	7.4
Faringdon No. 1 (5723)			
		vote	share
Douglass N.*	Con	1,438	54.8
Nettleton R.	Lab	692	26.4
King P.	Lib	444	16.9
Luker J.	Ind	52	2.0
Turnout		46.2	28.4
Faringdon No. 2 (5505)			
		vote	share
Bond E.*	Con	1,286	52.6
Ryder R.	Lib	593	24.2
Wren A.	Lab	567	23.2
Turnout		44.6	28.3
Great Milton & Wheatley (7148)			
		vote	share
Audley-Mills P.*	Con	1,425	47.6
Wilkinson J.	Lib	995	33.2
Bell J.	Lab	575	19.2
Turnout		42.0	14.4
Henley (North) (4473)			
		vote	share
Cresswell E.*	Con	943	51.6
Main H.	Lib	637	34.8
Venn E.	Lab	249	13.6
Turnout		41.0	16.7
Henley (South) (4125)			
		vote	share
Walden D.*	Con	1,032	61.6
Owen M.	Lib	644	38.4
Turnout		40.8	23.2

Henley Rural No. 1a (4371)			
		vote	share
Darlow F.*	Con	1,146	69.6
Hose P.	Lib	500	30.4
Turnout		37.8	39.2
Henley Rural No. 2 (5615)			
		vote	share
Morgan R.	Ind Soc Dem	1,186	50.4
Renel E.	Con	1,165	49.6
Turnout		42.3	0.9
Henley Rural No. 3 (4325)			
		vote	share
Crawford J.	Lib	1,131	52.7
Coles G.	Con	1,014	47.3
Turnout		50.0	5.5
Henley Rural No. 5 (4094)			
		vote	share
Willgoss R.	Con	1,024	52.8
Pim B. Ms.	Lib	914	47.2
Turnout		47.5	5.7
Hinksey (4018)			
		vote	share
Johnston P. Ms.	Lib	904	54.9
Brogden J.*	Con	742	45.1
Turnout		41.3	9.8
Horner (6845)			
		vote	share
Fogarty M.	Lib	1,311	40.3
Francis J.*	Con	1,308	40.2
Jones I.	Lab	631	19.4
Turnout		47.6	0.1
Littlemore (6199)			
		vote	share
Norman C. Ms.	Lab	1,385	59.8
Zinkin S. Ms.*	Con	640	27.6
Tovey R.	Lib	240	10.4
Johnson P.	Ind Li	52	2.2
Turnout		37.6	32.2
Marcham (5627)			
		vote	share
Walton J.	Con	1,619	75.1
Gray P.	Lab	538	24.9
Turnout		38.7	50.1
Moreton (6917)			
		vote	share
Randolph M. Ms.	Con	1,611	44.6
Bradshaw J. Ms.	Lib	1,184	32.8
Crawley C. Ms.	Lab	816	22.6
Turnout		52.3	11.8
Oxford (Blackbird Leys) (6146)			
		vote	share
Williamson A.	Lab	1,902	83.7
Frith D.	Con	370	16.3
Turnout		37.1	67.4
Oxford (Cherwell) (4834)			
		vote	share
Todd J. Ms.	Con	1,198	52.7
Cox J. Ms.	Lab	569	25.0
Forrest G.	Lib	507	22.3
Turnout		47.1	27.7
Oxford (Donnington) (4052)			
		vote	share
Power J.	Lab	1,190	64.4
Pratley D.	Con	657	35.6
Turnout		45.7	28.9

Oxford (East) (4875)			
		vote	share
Howard-Johnston J.	Lab	1,181	51.1
Kane F.*	Con	796	34.5
Brooker R.	Lib	202	8.7
Cullen V. Ms.	Ecol	131	5.7
Turnout		47.6	16.7

Oxford (Headlington) (6137)			
		vote	share
Lawrence R. Ms.	Lab	1,417	48.5
Ellis K. Ms.*	Con	1,129	38.6
Watney M.	Lib	377	12.9
Turnout		47.7	9.9

Oxford (Iffley) (4683)			
		vote	share
Parker J.	Lab	1,412	58.8
Yardley P. Ms.*	Con	991	41.2
Turnout		51.4	17.5

Oxford (Marston) (4819)			
		vote	share
Richardson T.	Lab	1,523	64.6
Tiffany M. Ms.	Con	835	35.4
Turnout		49.3	29.2

Oxford (North) (10231)			
		vote	share
Roaf D.	Lib	1,303	35.6
Peach J.*	Con	1,279	34.9
Towse A.	Lab	1,083	29.5
Turnout		36.0	0.7

Oxford (Quarry) (5403)			
		vote	share
Hamilton Q. Ms.*	Con	1,085	50.8
Joseph M. Ms.	Lab	611	28.6
Look H.	Lib	439	20.6
Turnout		39.6	22.2

Oxford (South) (5134)			
		vote	share
Kitchener A.	Lab	1,061	46.6
Curtin T.	Con	739	32.4
Mort E. Ms.	Lib	479	21.0
Turnout		44.6	14.1

Oxford (St. Clements) (5129)			
		vote	share
Clarke B. Ms.	Lab	1,067	43.6
Tennant B.*	Con	876	35.8
Godden M. Ms.	Lib	374	15.3
Foggitt P.	Ecol	131	5.4
Turnout		47.9	7.8

Oxford (Temple Cowley) (5270)			
		vote	share
Taylor D.	Lab	1,353	56.2
Ingram F.*	Con	1,056	43.8
Turnout		45.9	12.3

Oxford (West) (5403)			
		vote	share
Gibbs O. Ms.*	Lab	1,296	55.3
Macdonald R.	Con	750	32.0
Carpenter J.	Ecol	299	12.8
Turnout		43.6	23.3

Oxford (Wolvercote) (4606)			
		vote	share
Spokes A. Ms.*	Con	1,412	68.4
Bradley K. Ms.	Lab	651	31.6
Turnout		45.2	36.9

Oxford (Wood Farm) (5638)			
		vote	share
Kearney E. Ms.	Lab	1,225	51.9
Campbell J. Ms.*	Con	592	25.1
Ashton B.	Lib	544	23.0
Turnout		42.0	26.8

Ploughley No. 1 (5569)			
		vote	share
Prestidge B.*	Con	1,193	51.4
Harvey C.	Lab	1,128	48.6
Turnout		41.9	2.8

Ploughley No. 2 (7810)			
		vote	share
Davey R.	Con	1,759	57.9
Carter K.	Lab	1,281	42.1
Turnout		39.1	15.7

Ploughley No. 3 (5216)			
		vote	share
Markham P.	Con	1,182	53.2
Roberts E. Ms.	Lib	1,041	46.8
Turnout		42.8	6.3

Ploughley No. 4 (4820)			
		vote	share
Von Maltzahn E.*	Con	1,047	47.4
Reiss R. Ms.	Lab	730	33.1
Hichens M. Ms.	Lib	431	19.5
Turnout		45.8	14.4

Stanton St. John (6481)			
		vote	share
Ring G.*	Con	1,255	45.5
Tiwari K.	Lab	882	31.9
Sangster R. Ms.	Lib	624	22.6
Turnout		42.6	13.5

Thame (6263)			
		vote	share
Elson G.	Lib	1,637	65.6
Birch Reynardson P. Ms.*	Con	858	34.4
Turnout		39.9	31.2

Wallingford (4659)			
		vote	share
Calvin Thomas D.	Lib	1,484	71.9
Goode J.	Con	579	28.1
Turnout		44.4	43.9

Wantage (6320)			
		vote	share
Spurway A.	Soc Dem	1,273	44.2
Coates J.	Con	929	32.2
Morgan P.	Lab	680	23.6
Turnout		46.0	11.9

Wantage Rural No. 1 (5453)			
		vote	share
Clarke E.*	Con	1,606	53.0
Alexander E. Ms.	Lib	1,422	47.0
Turnout		55.8	6.1

Wantage Rural No. 2 (8338)			
		vote	share
Hurst H.	Con	1,927	57.4
Neal D.	Lab	1,428	42.6
Turnout		40.4	14.9

Watlington (2696)			
		vote	share
Gale G.	Con	682	63.6
Maunder B.	Lab	228	21.2
Fairey I.	Lib	163	15.2
Turnout		39.8	42.3

Witney (North) (3934)			
		vote	share
Cheeseman R.*	Con	597	36.5
Jessel P. Ms.	Lib	566	34.6
Hudson M. Ms.	Lab	472	28.9
Turnout		41.7	1.9

Witney (South) (6447)			
		vote	share
Baston P.*	Lib	1,428	47.9
Cooper E.	Lab	887	29.8
Bradd P. Ms.	Con	665	22.3
Turnout		46.4	18.2

Witney Rural No. 1 (Eynsham & Stand) (5120)			
		vote	share
Ayres M.	Con	1,015	44.1
Dorward C. Ms.	Lib	945	41.1
Haworth P.	Lab	340	14.8
Turnout		45.0	3.0

Witney Rural No. 2 (5249)			
		vote	share
Kernahan O.	Con	1,197	44.3
Margetts J.	Lib	1,041	38.5
Hudson A.	Lab	463	17.1
Turnout		51.5	5.8

Witney Rural No. 3 (4820)			
		vote	share
Gillett J.	Con	0	0.0
Turnout		0.0	0.0

Witney Rural No. 4 (5760)			
		vote	share
Madden P.	Lib	1,035	50.8
Frost M. Ms.	Con	1,001	49.2
Turnout		35.5	1.7

Witney Rural No. 5 (5079)			
		vote	share
Moody J.	Con	1,248	58.6
Ridoutt N.	Lib	880	41.4
Turnout		42.0	17.3

Oxfordshire 1985

Abingdon Central (6777)			
		vote	share
Blair I.*	Lib/SDP	1,624	49.1
Lewis G.	Con	1,115	33.7
Clyne L.	Lab	567	17.2
Turnout		48.8	15.4

Abingdon North (5074)			
		vote	share
Frere K.	Lib/SDP	981	37.4
Matthews M.	Con	929	35.4
Watt R.	Lab	712	27.2
Turnout		51.7	2.0

Abingdon South (5755)			
		vote	share
Jacottet J.*	Lab	994	38.0
Badcock M. Ms.	Con	869	33.2
Foster H.	Lib/SDP	754	28.8
Turnout		45.5	4.8

Bampton (4814)			
		vote	share
Fowler G.	Con	1,155	70.1
Tiwari K.	Lab	493	29.9
Turnout		34.2	40.2

Banbury Easington (6100)			
		vote	share
Blackmore M. Ms.	Con	1,188	43.0
Nash D. Ms.	Lib/SDP	821	29.7
Kilby W.	Lab	753	27.3
Turnout		45.3	13.3

Banbury Grimsbury (4601)				Chalgrove (5657)				Faringdon (6152)			
		vote	share			vote	share			vote	share
Fisher P.*	Lab	1,466	67.0	Buchanan H.	Con	1,061	43.8	Allsopp M.	Con	1,455	51.2
Attley C.	Con	404	18.5	Turner D.	Lib/SDP	901	37.2	Bush M.	Lib/SDP	965	33.9
Rowntree M.	Lib/SDP	319	14.6	Fray J.	Lab	463	19.1	Nettleton R.*	Lab	424	14.9
		Turnout	47.6			Turnout	42.9			Turnout	46.2
			48.5				6.6				17.2
Banbury Hardwick (4409)				Charlbury (5838)				Goring (6301)			
		vote	share			vote	share			vote	share
Ferriman M. Ms.	Lab	842	46.4	Juler E. Ms.*	Ind	1,167	44.6	Morgan R.	Lib/SDP	1,348	47.9
Evans C.	Lib/SDP	585	32.3	Millard D.	Con	781	29.8	Burrells W.	Con	1,226	43.6
Thompson P.	Con	386	21.3	Stewart S. Ms.	Lab	669	25.6	Stott M.	Lab	240	8.5
		Turnout	41.1			Turnout	44.8			Turnout	44.7
			14.2				14.7				4.3
Banbury Neithrop (5515)				Chinnor (5616)				Grove (5726)			
		vote	share			vote	share			vote	share
Rowland D.	Lib/SDP	1,150	47.2	Barlow C. Ms.*	Con	1,089	45.1	Jones J.	Lib/SDP	1,217	47.5
Humphries W. Ms.*	Lab	722	29.7	Hawkins C.	Lib/SDP	980	40.6	Hurst H.*	Con	835	32.6
Crain R.	Con	563	23.1	Volley M.	Lab	347	14.4	Nunn Price J. Ms.	Lab	509	19.9
		Turnout	44.2			Turnout	43.0			Turnout	44.7
			17.6				4.5				14.9
Banbury Ruscote (5816)				Chipping Norton (5062)				Hanborough (5515)			
		vote	share			vote	share			vote	share
Steer J.*	Lab	1,581	69.3	Barbour D.	Lab	1,219	51.4	McWilliam M. Ms.	Con	1,125	46.6
Albans G.	Lib/SDP	403	17.7	Knapman M.	Ind	1,153	48.6	Jessel P. Ms.	Lib/SDP	897	37.2
Pointing A.	Con	298	13.1			Turnout	46.9	Whitehead L.	Lab	390	16.2
		Turnout	39.2				2.8			Turnout	43.7
			51.6								9.5
Benson (5358)				Cumnor (5870)				Headington (6060)			
		vote	share			vote	share			vote	share
Thomson D.	Con	1,205	55.1	Wilcox A.*	Con	1,371	45.4	Perry J.	Lab	1,510	48.9
Law A. Ms.	Lib/SDP	618	28.3	Galloway C.	Lib/SDP	1,150	38.1	Stanyer J.	Con	1,078	34.9
Hesketh R.	Lab	362	16.6	Bowness K. Ms.	Lab	498	16.5	Hindley D. Ms.	Lib/SDP	502	16.2
		Turnout	40.8			Turnout	51.4			Turnout	51.0
			26.9				7.3				14.0
Bicester North (7025)				Deddington (6027)				Henley North (5419)			
		vote	share			vote	share			vote	share
Spencer D.	Con	1,027	38.4	Clifton H.*	Con	1,291	49.2	Clarke T.	Con	1,071	51.8
Pettifer D. Ms.	Lab	866	32.4	Brown B. Ms.	Lib/SDP	783	29.9	Evans P. Ms.	Lib/SDP	772	37.3
Cooper C.	Lib/SDP	782	29.2	Aydon J. Ms.	Lab	548	20.9	Green S. Ms.	Lab	225	10.9
		Turnout	38.1			Turnout	43.5			Turnout	38.2
			6.0				19.4				14.5
Bicester South (4559)				Didcot Manor (6065)				Henley South (6171)			
		vote	share			vote	share			vote	share
Butler P.	Con	973	46.4	Whittaker R.	Con	1,060	37.2	Walden D.*	Con	1,407	56.8
Jennings T.	Lab	601	28.7	McNulty M.	Lab	984	34.5	Owen M.	Lib/SDP	852	34.4
Burrett J. Ms.	Lib/SDP	522	24.9	Talbot D.	Lib/SDP	809	28.4	Maunder B.	Lab	218	8.8
		Turnout	46.0			Turnout	47.0			Turnout	40.1
			17.7				2.7				22.4
Blackbird Leys (6300)				Didcot Mereland (4707)				Hinksey (7108)			
		vote	share			vote	share			vote	share
Williamson A.*	Lab	1,699	78.2	Duggan B.*	Lab	986	53.0	Johnston P. Ms.*	Lib/SDP	1,801	50.5
Carter D. Ms.	Con	255	11.7	Harding A. Ms.	Con	525	28.2	Pheysey-Jones P.	Con	1,307	36.6
Farrar P. Ms.	Lib/SDP	219	10.1	Jones A.	Lib/SDP	348	18.7	Christophas S. Ms.	Lab	459	12.9
		Turnout	34.5			Turnout	39.5			Turnout	50.2
			66.5				24.8				13.8
Bloxham (5766)				Dorchester (5753)				Hormer (6575)			
		vote	share			vote	share			vote	share
Blakey W.	Con	1,629	68.1	Farrell C.*	Con	1,159	45.0	Fogarty M.*	Lib/SDP	1,311	45.9
Plester J.	Lab	762	31.9	Booth A.	Lab	1,006	39.0	Winter T.	Con	1,115	39.0
		Turnout	41.5	Peterson J. Ms.	Lib/SDP	412	16.0	Silas Q.	Lab	431	15.1
			36.3			Turnout	44.8			Turnout	43.5
							5.9				6.9
Burford (5590)				Drayton (5353)				Iffley (6172)			
		vote	share			vote	share			vote	share
Moody J.*	Con	1,405	54.3	Francis J.	Con	1,147	38.8	Parker J.*	Lab	1,721	53.0
Jones J. Ms.	Lib/SDP	845	32.7	Mackenzie M. Ms.*	Lab	1,116	37.8	Yardley P. Ms.	Con	1,085	33.4
Jay M. Ms.	Lab	336	13.0	Moley J.	Lib/SDP	690	23.4	Sealey D.	Lib/SDP	385	11.9
		Turnout	46.3			Turnout	55.2	Minns A.	Ind	55	1.7
			21.7				1.0			Turnout	52.6
											19.6
Carterton (6519)				Eynsham (5433)				Kidlington North (5515)			
		vote	share			vote	share			vote	share
Bulley D. Ms.	Con	1,043	48.2	Giles A.	Lib/SDP	1,115	43.5	Brennan P.	Lab	733	36.1
Madden P.*	Lib/SDP	752	34.8	Ayres M.*	Con	1,048	40.9	Davey R.*	Con	726	35.7
Ferriman R.	Ind	217	10.0	Timms P.	Lab	399	15.6	Lardner A.	Lib/SDP	574	28.2
Cuss S. Ms.	Lab	152	7.0			Turnout	47.2			Turnout	36.9
		Turnout	33.2				2.6				0.3

Kidlington South (5660)			
		vote	share
Groves R.	Lab	1,503	60.1
Matthews N.	Con	998	39.9
Turnout		44.2	20.2
Littlemore (5648)			
		vote	share
Norman C. Ms.*	Lab	1,277	59.7
Lewin V.	Con	476	22.2
Jenkins P.	Lib/SDP	387	18.1
Turnout		37.9	37.4
Marcham (6085)			
		vote	share
Walton J.*	Con	1,384	54.2
Brod R. Ms.	Lib/SDP	744	29.1
Fathers D.	Lab	427	16.7
Turnout		42.0	25.0
Moreton (5906)			
		vote	share
Randolph M. Ms.*	Con	1,308	44.6
Dale-Emberton K. Ms.	Lib/SDP	1,092	37.2
Haworth J.	Lab	534	18.2
Turnout		49.7	7.4
New Marston (4997)			
		vote	share
Richardson T.*	Lab	1,474	58.7
Wicks L. Ms.	Con	648	25.8
Watney M.	Lib/SDP	390	15.5
Turnout		50.3	32.9
Old Marston (5119)			
		vote	share
Carter K.	Lab	1,072	42.7
O'Reilly M.	Con	861	34.3
Stanton-Ife D.	Lib/SDP	579	23.0
Turnout		49.1	8.4
Oxford Central (5041)			
		vote	share
Hart M.	Lib/SDP	990	40.1
Opie R.	Lab	866	35.1
Egerton J.	Con	406	16.5
Wilkinson E. Ms.	Ecol	204	8.3
Turnout		48.9	5.0
Oxford Cherwell (4871)			
		vote	share
Todd J. Ms.*	Con	1,207	47.6
Luard D.	Lib/SDP	880	34.7
Martin S.	Lab	447	17.6
Turnout		52.0	12.9
Oxford East (5473)			
		vote	share
Howard-Johnston J.*	Lab	1,457	57.5
Pratley D.	Con	606	23.9
Wolstenholme J.	Lib/SDP	472	18.6
Turnout		46.3	33.6
Oxford North (5594)			
		vote	share
Roaf D.*	Lib/SDP	1,170	46.5
Proudfoot M. Ms.	Con	726	28.9
Lawrence R. Ms.	Lab	620	24.6
Turnout		45.0	17.6
Oxford South (5460)			
		vote	share
Smith T. Ms.	Lab	1,346	55.0
Curtin T.	Con	667	27.2
Szechi J. Ms.	Lib/SDP	436	17.8
Turnout		44.9	27.7

Oxford West (5258)			
		vote	share
Barnes E. Ms.	Lab	1,230	56.8
Bland W.	Con	475	22.0
Yates W.	Lib/SDP	459	21.2
Turnout		41.2	34.9
Ploughley (6319)			
		vote	share
Rymer R.	Con	1,256	43.9
Hunter J.	Lib/SDP	1,122	39.2
Johnson D.	Lab	483	16.9
Turnout		45.3	4.7
Quarry (5733)			
		vote	share
Godden M. Ms.	Lib/SDP	1,157	40.2
Tiffany M. Ms.	Con	944	32.8
Gray P.	Lab	776	27.0
Turnout		50.2	7.4
Shrivenham (6217)			
		vote	share
Bond E.*	Con	1,372	49.6
Torrington E. Ms.	Lib/SDP	991	35.8
Smith V. Ms.	Lab	404	14.6
Turnout		44.5	13.8
Sonning Common (6160)			
		vote	share
Hordern L.	Con	1,577	52.1
Crawford J.*	Lib/SDP	1,143	37.8
Wright K.	Lab	305	10.1
Turnout		49.1	14.3
St. Clements (6399)			
		vote	share
Tompkins S. Ms.	Lab	1,379	46.9
Tannant B.	Con	656	22.3
Farrar H.	Lib/SDP	567	19.3
King N.	Res	191	6.5
Brooks D.	Ecol	145	4.9
Turnout		45.9	24.6
Temple Cowley (5457)			
		vote	share
Plaskitt J.	Lab	1,276	55.4
Martin C. Ms.	Con	658	28.5
Hammond C.	Lib/SDP	371	16.1
Turnout		42.2	26.8
Thame (7233)			
		vote	share
Elson G.*	Lib/SDP	1,310	45.4
Castle F. Ms.	Con	822	28.5
Darby R.	Lab	425	14.7
Webb L.	Ind	328	11.4
Turnout		39.9	16.9
Wallingford (6170)			
		vote	share
Calvin-Thomas D.*	Lib/SDP	1,618	53.3
Willgoss R.*	Con	912	30.0
Phillips W.	Lab	507	16.7
Turnout		49.2	23.2
Wantage (6618)			
		vote	share
Terry S. Ms.	Lib/SDP	1,500	48.9
Humphries J.	Con	918	29.9
Morgan P.	Lab	651	21.2
Turnout		46.4	19.0
Wantage Rural (5566)			
		vote	share
Clarke E.	Con	1,443	47.2
Farrell R.	Lib/SDP	1,249	40.9
Moss P.	Lab	363	11.9
Turnout		54.9	6.4

Watlington (5373)			
		vote	share
Woodeson R.	Con	1,232	49.9
Hilton R.	Lib/SDP	996	40.3
Thomas A.	Lab	243	9.8
Turnout		46.0	9.6
Wheatley (6747)			
		vote	share
Audley-Miller P.*	Con	1,351	45.5
Dalton C. Ms.	Lib/SDP	1,092	36.8
Lomas M.	Lab	526	17.7
Turnout		44.0	8.7
Witney North (4979)			
		vote	share
Bartrum C.	Lib/SDP	945	46.9
Kellow G.	Con	673	33.4
Ryle D.	Lab	396	19.7
Turnout		40.4	13.5
Witney South (7077)			
		vote	share
Baston P.*	Lib/SDP	1,239	41.4
Cooper E.	Lab	993	33.2
Evans W. Ms.	Con	761	25.4
Turnout		42.3	8.2
Wolvercote (5190)			
		vote	share
Whorley N. Ms.	Con	1,070	42.5
Jones H.	Lib/SDP	845	33.6
Bygott D.	Lab	602	23.9
Turnout		48.5	8.9
Wood Farm (5691)			
		vote	share
Kearney E. Ms.*	Lab	1,227	55.9
Hedger D.	Con	596	27.1
Blanks C. Ms.	Lib/SDP	373	17.0
Turnout		38.6	28.7
Woodstock (5292)			
		vote	share
Banbury J.*	Con	1,127	46.2
Cooper L.	Ind	706	28.9
Roche W.	Lab	607	24.9
Turnout		46.1	17.3
Wroxton (5481)			
		vote	share
Turner D.	Con	1,610	56.9
Couch A.	Lib/SDP	740	26.1
Parsons R. Ms.	Lab	480	17.0
Turnout		51.6	30.7
Wychwood (4896)			
		vote	share
Cochrane J.	Lib/SDP	1,313	49.9
Groves B.	Con	1,055	40.1
Bell J.	Lab	261	9.9
Turnout		53.7	9.8
Yarnton & Otmoor (5919)			
		vote	share
Harris E. Ms.	Lib/SDP	1,456	44.2
Markham P.*	Con	1,304	39.6
Kynch J. Ms.	Lab	535	16.2
Turnout		55.7	4.6

Oxfordshire 1989

Abingdon Central (9386)

		vote	share
Blair I.*	LD	1,847	45.1
Hemmings J.	Con	1,716	41.9
Gray C. Ms.	Lab	529	12.9

Turnout 43.6 3.2

Abingdon North (6626)

		vote	share
Frere K.*	LD	1,326	46.6
Benterman M.	Con	1,083	38.0
House A.	Lab	439	15.4

Turnout 43.0 8.5

Abingdon South (6051)

		vote	share
Hemmings E.	Lab	1,095	40.2
Hedley B.	Con	967	35.5
Halliday J.	LD	524	19.2
Walker S. Ms.	Green	109	4.0
Einon K.	Ind	28	1.0

Turnout 45.0 4.7

Bampton (6797)

		vote	share
Fowler G.*	Con	1,405	59.2
Robins C.	Lab	497	20.9
Shaw P.	Ind	472	19.9

Turnout 34.9 38.2

Banbury Easington (6063)

		vote	share
Giddings J.	Con	1,220	52.0
Nash D. Ms.	LD	581	24.8
Humphries A.	Lab	544	23.2

Turnout 38.7 27.2

Banbury Grimsbury (4772)

		vote	share
Fisher P.*	Lab	1,305	68.8
Kaye N.	Con	455	24.0
Bedford M.	LD	136	7.2

Turnout 39.7 44.8

Banbury Hardwick (5308)

		vote	share
Humphries W. Ms.	Lab	859	49.8
Milne E. Ms.	Con	639	37.0
Fisher G.	LD	139	8.1
Keys R.	SDP	88	5.1

Turnout 32.5 12.8

Banbury Neithrop (5410)

		vote	share
Porteous J. Ms.	Lab	870	50.6
Jones A.	Con	553	32.2
Creevy D.	LD	295	17.2

Turnout 31.8 18.5

Banbury Ruscot (5760)

		vote	share
Steer J.*	Lab	1,303	74.3
Marshall I.	Con	310	17.7
Nash A. Ms.	LD	140	8.0

Turnout 30.4 56.6

Benson (5483)

		vote	share
Cundall H.	Con	1,345	62.6
Cooper S. Ms.	LD	506	23.5
Hesketh R.	Lab	299	13.9

Turnout 39.2 39.0

Bicester North (9745)

		vote	share
Spencer D.*	Con	1,617	53.0
Sims S.	Lab	921	30.2
Rookwood R.	LD	515	16.9

Turnout 31.3 22.8

Bicester South (4006)

		vote	share
Shouler C.	Con	748	45.1
Fisher M.	Lab	474	28.6
Rowlands H. Ms.	LD	436	26.3

Turnout 41.4 16.5

Blackbird Leys (5890)

		vote	share
Stockford A.*	Lab	1,533	81.6
Kurtz Z. Ms.	Con	210	11.2
Smith D.	Green	85	4.5
Brown A. Ms.	LD	50	2.7

Turnout 31.9 70.4

Bloxham (5828)

		vote	share
Mitchell K.	Con	1,531	64.5
O'Donnell F. Ms.	Lab	511	21.5
Pizzey T.	LD	330	13.9

Turnout 40.7 43.0

Burford (5712)

		vote	share
Martin M. Ms.	Con	1,435	61.6
Brown S. Ms.	LD	495	21.3
Collett A.	Lab	399	17.1

Turnout 40.8 40.4

Carterton (8121)

		vote	share
Bulley D. Ms.*	Con	1,217	60.5
Madden P.	LD	520	25.9
Cuss S. Ms.	Lab	273	13.6

Turnout 24.8 34.7

Chalgrove (5802)

		vote	share
Turner D.	LD	1,520	58.0
Noon H. Ms.	Con	1,102	42.0

Turnout 45.2 15.9

Charlbury (6018)

		vote	share
Juler H.*	Ind	989	33.7
Millard D.	Con	798	27.2
Robertson M. Ms.	Lab	620	21.1
Colchester M.	Green	530	18.0

Turnout 48.8 6.5

Chinnor (5703)

		vote	share
Davis A. Ms.*	Con	1,244	60.7
Hawkins C.	LD	806	39.3

Turnout 35.9 21.4

Chipping Norton (5322)

		vote	share
Barbour D.*	Lab	1,318	53.8
Stroud T.	Con	1,132	46.2

Turnout 46.0 7.6

Cumnor (6764)

		vote	share
Hook B.	Con	1,610	58.9
James R. Ms.	LD	511	18.7
Jones C. Ms.	Lab	425	15.5
Linsdell J. Ms.	Green	189	6.9

Turnout 40.4 40.2

Deddington (6246)

		vote	share
Matthews N.*	Con	1,637	62.3
Brown B. Ms.	LD	558	21.2
Cornelius D.	Lab	434	16.5

Turnout 42.1 41.0

Didcot Manor (6095)

		vote	share
Horn P.	Con	1,165	41.6
Paterson A.	Lab	1,077	38.5
Hackett T.	LD	559	20.0

Turnout 46.0 3.1

Didcot Mereland (5067)

		vote	share
Duggan B.*	Lab	1,271	65.4
Hutchence J. Ms.	Con	673	34.6

Turnout 38.4 30.8

Dorchester (5969)

		vote	share
Stevenson I.*	Con	1,403	56.6
Pinnington J.	Lab	1,076	43.4

Turnout 41.5 13.2

Drayton (5526)

		vote	share
Mackenzie M. Ms.	Lab	1,511	48.4
Francis J.*	Con	1,319	42.3
Wallace P.	LD	291	9.3

Turnout 56.5 6.2

Eynsham (6750)

		vote	share
Giles A.*	LD	1,276	45.8
Ayres M.	Con	1,021	36.7
Coker E.	Lab	344	12.4
Green A.	Green	142	5.1

Turnout 41.2 9.2

Faringdon (6363)

		vote	share
Allsopp M.*	Con	1,434	60.6
Johnston R.	LD	492	20.8
Court T.	Lab	442	18.7

Turnout 37.2 39.8

Goring (6198)

		vote	share
Morgan R.*	LD	1,542	50.0
Whitfield D. Ms.	Con	1,541	50.0

Turnout 49.7 0.0

Grove (5387)

		vote	share
Jones J.*	LD	1,043	44.8
Wolage A.	Con	918	39.4
Green F. Ms.	Lab	368	15.8

Turnout 43.2 5.4

Hanborough (5748)

		vote	share
McWilliam M. Ms.*	Con	1,209	47.3
Cohen L.	LD	958	37.5
Whitehead L.	Lab	390	15.3

Turnout 44.5 9.8

Headington (6419)

		vote	share
Tompkins S. Ms.*	Lab	1,493	51.7
Flynn M. Ms.	Con	957	33.1
Lawton Smith R. Ms.	LD	275	9.5
Martin J. Ms.	Green	163	5.6

Turnout 45.0 18.6

Henley North (5322)

		vote	share
Clarke T.*	Con	1,052	63.1
Owen J. Ms.	LD	615	36.9

Turnout 31.3 26.2

Woodstock (5327)			
		vote	share
Banbury J.*	Con	1,096	51.4
Gilbert H. Ms.	LD	567	26.6
Matthews S. Ms.	Lab	469	22.0
Turnout		40.0	24.8

Wroxton (5650)			
		vote	share
Turner D.*	Con	1,783	65.8
Edgar S. Ms.	Lab	537	19.8
Hunt P.	LD	388	14.3
Turnout		47.9	46.0

Wychwood (5176)			
		vote	share
Cochrane J.*	LD	1,362	48.9
Richards C.	Con	1,171	42.0
Harvey C.	Lab	254	9.1
Turnout		53.8	6.9

Yarnton & Otmoor (5904)			
		vote	share
Markham P.	Con	1,360	44.5
Roberts E. Ms.	LD	1,213	39.7
Beere E. Ms.	Lab	254	8.3
Duffield C.	Green	232	7.6
Turnout		51.8	4.8

Oxfordshire 1993

Abingdon Central (9373)			
		vote	share
Mayhew-Archer J. Ms.	LD	2,503	56.7
Lightfoot J.	Con	1,389	31.4
Minal F.	Lab	403	9.1
Shorten A.	Green	122	2.8
Turnout		47.1	25.2

Abingdon North (7523)			
		vote	share
Morgan J. Ms.	LD	2,126	58.7
Lovatt M. Ms.	Con	1,167	32.2
Butler P.	Lab	329	9.1
Turnout		48.2	26.5

Abingdon South (6022)			
		vote	share
Badcock M. Ms.	Con	991	39.0
Hemmings E.*	Lab	867	34.1
Halliday J.	LD	681	26.8
Turnout		42.2	4.9

Bampton (7977)			
		vote	share
Fowler G.*	Con	1,206	47.3
Ford B.	LD	736	28.9
Bridge H. Ms.	Lab	607	23.8
Turnout		32.0	18.4

Banbury Easington (6122)			
		vote	share
Giddings J.*	Con	927	45.8
Nash D. Ms.	LD	563	27.8
Freeman K.	Lab	533	26.3
Turnout		33.0	18.0

Banbury Grimsbury (5928)			
		vote	share
Billingham A. Ms.	Lab	1,267	65.3
Kaye N.	Con	426	21.9
Creedy D.	LD	248	12.8
Turnout		32.7	43.3

Banbury Hardwick (5249)			
		vote	share
Humphries W. Ms.*	Lab	802	53.4
Reynolds G.	Con	456	30.3
Burch V.	LD	245	16.3
Turnout		28.6	23.0

Banbury Neithrop (5074)			
		vote	share
Ferriman M. Ms.	Lab	954	54.6
Robinson L.	Con	426	24.4
Fisher G.	LD	368	21.1
Turnout		34.5	30.2

Banbury Ruscote (5438)			
		vote	share
Steer J.*	Lab	1,286	73.8
Clark K.	LD	243	13.9
Reeves S.	Con	213	12.2
Turnout		32.0	59.9

Benson (5232)			
		vote	share
Cundall H.*	Con	1,114	54.3
Griffin J.	LD	819	39.9
Miles S. Ms.	Green	120	5.8
Turnout		39.2	14.4

Bicester North (11656)			
		vote	share
Spencer D.*	Con	1,712	47.7
Fisher M.	Lab	1,062	29.6
Colden J. Ms.	LD	812	22.6
Turnout		30.8	18.1

Bicester South (3951)			
		vote	share
Shouler C.*	Con	712	49.2
Marriott S.	Lab	441	30.5
Bannister E. Ms.	LD	294	20.3
Turnout		36.6	18.7

Blackbird Leys (5798)			
		vote	share
Stockford A.*	Lab	1,197	83.5
French J.	Con	112	7.8
Forde-Johnston J.	LD	78	5.4
Dickson P. Ms.	Green	46	3.2
Turnout		24.7	75.7

Bloxham (5780)			
		vote	share
Mitchell K.*	Con	1,439	55.4
Garnett E. Ms.	LD	808	31.1
Lemare P.	Lab	352	13.5
Turnout		45.0	24.3

Burford (5602)			
		vote	share
Martin M. Ms.*	Con	1,078	52.7
Rossiter D.	LD	568	27.8
Burns P.	Lab	400	19.6
Turnout		36.5	24.9

Carterton (8014)			
		vote	share
Bulley D. Ms.*	Con	900	50.7
Madden P.	LD	513	28.9
Kingham T. Ms.	Lab	256	14.4
Little W. Ms.	Ind	107	6.0
Turnout		22.2	21.8

Chalgrove (5862)			
		vote	share
Turner D.*	LD	1,789	63.5
Hall E.	Con	1,029	36.5
Turnout		48.1	27.0

Charlbury (5925)			
		vote	share
Hodgson J.	Lab	1,119	35.3
Cayzer H.	Con	858	27.1
Tatton C.	LD	793	25.0
Juler H.*	Ind	396	12.5
Turnout		53.4	8.2

Chinnor (5580)			
		vote	share
Davis A. Ms.*	Con	990	49.3
Horton T.	LD	694	34.5
Lucas G. Ms.	Lab	325	16.2
Turnout		36.0	14.7

Chipping Norton (5280)			
		vote	share
Barbour D.*	Lab	1,127	59.6
Osbourne M.	Con	764	40.4
Turnout		35.8	19.2

Cumnor (6902)			
		vote	share
Hook B.*	Con	1,382	48.9
Pedler G. Ms.	LD	873	30.9
Murdock K. Ms.	Lab	419	14.8
Jones R.	Green	150	5.3
Turnout		40.9	18.0

Deddington (6339)			
		vote	share
Matthews N.*	Con	1,382	56.0
Davis P.	LD	647	26.2
Sullivan G.	Lab	440	17.8
Turnout		39.0	29.8

Didcot Manor (7257)			
		vote	share
Joslin T.	Lab	1,441	45.6
Horn P.*	Con	1,266	40.1
Jones A.	LD	452	14.3
Turnout		43.5	5.5

Didcot Mereland (5273)			
		vote	share
Duggan B.*	Lab	1,058	62.8
Hutchence J. Ms.	Con	381	22.6
Lang J. Ms.	LD	245	14.5
Turnout		31.9	40.2

Dorchester (5916)			
		vote	share
Stevenson I.*	Con	1,119	43.0
Newdick M.	Lab	924	35.5
Peirce R.	LD	558	21.5
Turnout		44.0	7.5

Drayton (5622)			
		vote	share
Mackenzie M. Ms.*	Lab	1,801	65.3
Teat D.	Con	955	34.7
Turnout		49.0	30.7

Eynsham (6831)			
		vote	share
Wyatt H.	LD	1,407	51.9
Wright F.	Con	832	30.7
Shelton M.	Lab	471	17.4
Turnout		39.7	21.2

Faringdon (6592)			
		vote	share
Allsopp M.*	Con	1,246	47.9
Hickmore A.	Lab	745	28.7
Monk T. Ms.	LD	609	23.4
Turnout		39.4	19.3

Goring (6027)			
		vote	share
Morgan R.*	LD	1,716	55.5
Coombs T.	Con	1,219	39.4
Saunders C. Ms.	Green	157	5.1
Turnout		51.3	16.1
Grove (5502)			
		vote	share
Jones J.*	LD	1,187	52.5
Wolage A.	Con	808	35.7
Green D.	Lab	266	11.8
Turnout		41.1	16.8
Hanborough (5756)			
		vote	share
McWilliam M. Ms.*	Con	1,097	44.1
James D.	LD	1,022	41.1
Robins C.	Lab	370	14.9
Turnout		43.2	3.0
Headington (6366)			
		vote	share
Tompkins S. Ms.*	Lab	1,148	47.8
Dailey P. Ms.	Con	852	35.5
Lawton-Smith R. Ms.	LD	283	11.8
Ingram P.	Green	120	5.0
Turnout		37.8	12.3
Henley North (5065)			
		vote	share
Clarke T.*	Con	944	51.6
Voss J. Ms.	Ind	586	32.1
Aird D.	LD	298	16.3
Turnout		36.1	19.6
Henley South (5933)			
		vote	share
Walden D.*	Con	1,248	54.7
Arlett K.	Ind	538	23.6
Owen M.	LD	331	14.5
Matthews J. Ms.	Lab	165	7.2
Turnout		38.5	31.1
Hinksey (7237)			
		vote	share
Godden J. Ms.	LD	1,649	48.9
Griffiths S.	Con	1,170	34.7
Robbins S. Ms.	Lab	437	13.0
Howe M.	Green	118	3.5
Turnout		46.6	14.2
Horner (4418)			
		vote	share
Johnston R.	LD	1,315	55.6
France N.	Con	835	35.3
Clyne L.	Lab	131	5.5
Welsh G.	Green	85	3.6
Turnout		53.6	20.3
Iffley (5703)			
		vote	share
Enright D.	Lab	1,316	54.5
Morris V.	Con	697	28.9
Manley W. Ms.	Green	217	9.0
Townsend N.	LD	185	7.7
Turnout		42.4	25.6
Kidlington North (5958)			
		vote	share
Drown J. Ms.*	Lab	978	48.1
Munday H.	Con	657	32.3
Gombrich R.	LD	399	19.6
Turnout		34.1	15.8
Kidlington South (5208)			
		vote	share
Green D.	Lab	1,040	47.9
Prestidge B.	Con	783	36.0
Perrott F.	LD	350	16.1
Turnout		41.7	11.8

Littlemore (5272)			
		vote	share
Collins I.*	Lab	940	69.5
Shomroni G. Ms.	Con	224	16.6
Tilson P. Ms.	ld	124	9.2
Lucas E.	green	65	4.8
Turnout		25.7	52.9
Marcham (5123)			
		vote	share
Walton J.*	Con	1,130	54.6
Todd L. Ms.	LD	628	30.3
Long T.	Lab	313	15.1
Turnout		40.4	24.2
Moreton (5897)			
		vote	share
Morgan J. Ms.	LD	1,213	43.9
Randolph M. Ms.*	Con	1,126	40.8
Garraway R.	Lab	306	11.1
McCrea I.	Green	117	4.2
Turnout		46.8	3.1
New Marston (4768)			
		vote	share
Richardson T.*	Lab	1,158	61.2
Ruffels D.	Con	430	22.7
Goddard S.	LD	175	9.2
Glass D. Ms.	Green	130	6.9
Turnout		39.7	38.5
Old Marston (4883)			
		vote	share
Bartleet N.*	Lab	1,138	54.0
Lord J.	Con	658	31.2
Edwards A.	ld	203	9.6
Funge S. Ms.	green	109	5.2
Turnout		43.3	22.8
Oxford Central (5630)			
		vote	share
Bostock J. Ms.	LD	825	39.8
Woodin M.	Green	790	38.1
Brown S. Ms.	Lab	320	15.4
Jordan M.	Con	138	6.7
Turnout		36.8	1.7
Oxford Cherwell (4840)			
		vote	share
Todd J. Ms.*	Con	904	44.1
Hudson J.	LD	529	25.8
Mabro J. Ms.	Lab	441	21.5
Lee M.	Green	175	8.5
Turnout		42.3	18.3
Oxford East (5659)			
		vote	share
Langridge R.	Lab	1,082	62.1
Day R.	Con	232	13.3
Smith D.	Green	217	12.5
Barker P.	LD	210	12.1
Turnout		30.8	48.8
Oxford North (5422)			
		vote	share
Roaf D.*	LD	974	46.3
Evans R.	Lab	496	23.6
Sanderson A.	Con	398	18.9
Leake D.	Green	235	11.2
Turnout		38.8	22.7
Oxford South (5788)			
		vote	share
Marks S.	Lab	1,092	52.9
Curtin T.	Con	468	22.7
Griffiths G.	LD	351	17.0
Everett D.	Green	154	7.5
Turnout		35.7	30.2

Oxford West (5202)			
		vote	share
Barnes E. Ms.*	Lab	1,108	55.0
Rundle D.	LD	308	15.3
Porter R.	Con	307	15.3
Lingwood P.	Green	290	14.4
Turnout		38.7	39.7
Ploughley (6776)			
		vote	share
Fulljames C. Ms.*	Con	1,546	60.0
Roxburgh A. Ms.	LD	656	25.5
Cousin A.	Lab	373	14.5
Turnout		38.0	34.6
Quarry (5605)			
		vote	share
Smith M. Ms.	Lab	1,079	44.8
Kurtz Z. Ms.	Con	905	37.5
Crocket R. Ms.	LD	343	14.2
Powter G. Ms.	Green	84	3.5
Turnout		43.0	7.2
Shrivenham (6598)			
		vote	share
Lambert A.	LD	1,419	52.1
Bowen B.	Con	1,302	47.9
Turnout		41.2	4.3
Sonning Common (5698)			
		vote	share
Robertson A.	Con	1,390	57.3
Aird P. Ms.	LD	717	29.6
Harris J.	Lab	317	13.1
Turnout		42.5	27.8
St. Clements (6699)			
		vote	share
Lucas C. Ms.	Green	988	40.8
Loughran B. Ms.	Lab	970	40.0
Young J.	Con	302	12.5
Wright J.	LD	164	6.8
Turnout		36.2	0.7
Temple Cowley (4911)			
		vote	share
Plaskitt J.*	Lab	985	63.2
Higgins S.	Con	394	25.3
Tyers C. Ms.	LD	117	7.5
Dalton D.	Green	63	4.0
Turnout		31.8	37.9
Thame (8111)			
		vote	share
Smith D. Ms.*	Con	1,305	49.8
Le Mesurier T.	Lab	801	30.6
Lawn C.	LD	514	19.6
Turnout		32.3	19.2
Wallingford (6322)			
		vote	share
Bradshaw W.	LD	1,697	57.2
Moor N.	Con	1,147	38.6
Ely R.	Green	125	4.2
Turnout		47.0	18.5
Wantage (7214)			
		vote	share
Terry S. Ms.*	LD	1,549	56.6
Garrity M.	Con	773	28.3
Nunn-Price J. Ms.	Lab	414	15.1
Turnout		37.9	28.4
Wantage Rural (5479)			
		vote	share
Harvey A.	LD	1,217	42.0
Groves P.	Con	1,216	41.9
Taylor I.	Lab	467	16.1
Turnout		52.9	0.0

Watlington (5444)			
		vote	share
Saunders D.*	Con	1,273	52.3
Harvey P. Ms.	LD	1,163	47.7
	Turnout	44.8	4.5
Wheatley (6643)			
		vote	share
Purse P. Ms.	LD	1,392	48.6
Audley-Miller P.*	Con	1,115	38.9
Le Gryns A.	Lab	359	12.5
	Turnout	43.1	9.7
Witney North (5135)			
		vote	share
Churchill B. Ms.	LD	995	51.3
Bradd P. Ms.	Con	600	31.0
Brereton S.	Lab	343	17.7
	Turnout	37.7	20.4
Witney South (7075)			
		vote	share
Cooper E.*	Lab	1,429	53.0
Hayward S.	Con	853	31.6
Lynn P.	LD	415	15.4
	Turnout	38.1	21.4
Wolvercote (4998)			
		vote	share
Milne R. Ms.	LD	1,093	42.2
Comfort N. Ms.	Con	967	37.3
Thompson C.	Lab	395	15.3
Bullard V. Ms.	Green	135	5.2
	Turnout	51.8	4.9
Wood Farm (5344)			
		vote	share
Buckle D.*	Lab	1,076	57.3
Jacobs E. Ms.	Con	491	26.1
Barton I. Ms.	LD	167	8.9
Ames M.	Green	89	4.7
Jenking R.	LIB	55	2.9
	Turnout	35.1	31.2
Woodstock (5195)			
		vote	share
Banbury J.*	Con	893	42.0
Nicholson D.	LD	853	40.1
Brooks B. Ms.	Lab	379	17.8
	Turnout	40.9	1.9
Wroxton (5722)			
		vote	share
Turner D.*	Con	1,417	54.6
Brown B. Ms.	LD	642	24.7
Edgar S. Ms.	Lab	536	20.7
	Turnout	45.4	29.9
Wychwood (5301)			
		vote	share
Cochrane J.*	LD	1,466	54.1
Cayzer A. Ms.	Con	1,000	36.9
Luetchford M.	Lab	243	9.0
	Turnout	51.1	17.2
Yarnton & Otmoor (5902)			
		vote	share
Roberts E. Ms.	LD	1,719	58.1
Markham D.*	Con	1,242	41.9
	Turnout	50.2	16.1

Oxfordshire 1997

Abingdon Central (9922)			
		vote	share
Mayhew-Archer J. Ms.*	LD	51.8	4,022
Lightfoot J.	Con	2,402	30.9
Thomas R.	Lab	1,124	14.5
Warman C. Ms.	Green	223	2.9
	Turnout	78.8	20.8
Abingdon North (7850)			
		vote	share
Morgan J. Ms.*	LD	3,293	52.5
Lavatt M. Ms.	Con	2,074	33.1
Nichols R. Ms.	Lab	901	14.4
	Turnout	80.2	19.4
Abingdon South (6052)			
		vote	share
Fawcett N.	LD	1,978	43.5
Darke G. Ms.	Con	1,419	31.2
Banner R. Ms.	Lab	1,154	25.4
	Turnout	75.7	12.3
Bampton (8763)			
		vote	share
Hayward S.	Con	2,990	43.5
Smith B. Ms.	LD	2,378	34.6
Rees K.	Lab	1,509	21.9
	Turnout	79.3	8.9
Banbury Easington (6485)			
		vote	share
Mallon K.	Con	1,984	39.5
Nash D. Ms.	LD	1,652	32.9
Mold R.	Lab	1,385	27.6
	Turnout	77.8	6.6
Banbury Grimsbury (6755)			
		vote	share
Mold S. Ms.	Lab	2,042	46.3
Tompkins R.	Con	1,514	34.3
Linzey-Jones P. Ms.	LD	857	19.4
	Turnout	66.0	12.0
Banbury Hardwick (5260)			
		vote	share
Humphries W. Ms.*	Lab	1,738	47.6
Milne E. Ms.	Con	1,223	33.5
Burch V.	LD	687	18.8
	Turnout	69.6	14.1
Banbury Neithrop (5599)			
		vote	share
Ferriman M. Ms.*	Lab	1,607	41.3
Wills G.	Con	1,282	32.9
Fisher G.	LD	1,003	25.8
	Turnout	70.0	8.4
Banbury Ruscote (5467)			
		vote	share
Steer J.*	Lab	2,375	64.0
Wardell C.	Con	780	21.0
Burns A.	LD	558	15.0
	Turnout	68.3	43.0
Benson (5476)			
		vote	share
Crabble A.	Con	1,842	43.9
Cooper S. Ms.	LD	1,544	36.8
Merritt J.	Lab	814	19.4
	Turnout	77.2	7.1

Bicester North (13702)			
		vote	share
Spencer D.*	Con	4,369	42.4
Sibley L.	Lab	3,497	33.9
Yardley E. Ms.	LD	2,082	20.2
Cassidy H.	Ind Lab	368	3.6
	Turnout	75.7	8.5
Bicester South (4158)			
		vote	share
Shouler C.*	Con	1,251	40.3
Simpson M.	Lab	968	31.2
Bearder C. Ms.	LD	882	28.4
	Turnout	74.8	9.1
Blackbird Leys (6646)			
		vote	share
Stockford A.*	Lab	2,982	73.8
Hernandez P.	Con	484	12.0
Keen P.	LD	386	9.6
Dickson P. Ms.	Green	189	4.7
	Turnout	62.0	61.8
Bloxham (6070)			
		vote	share
Mitchell K.*	Con	2,752	56.6
Galloway C.	LD	1,119	23.0
Plester J.	Lab	995	20.4
	Turnout	80.2	33.6
Burford (5739)			
		vote	share
Seale D.	Con	2,317	51.0
Dunipace R.	LD	1,333	29.3
Bettle A. Ms.	Lab	895	19.7
	Turnout	79.8	21.7
Carterton (7789)			
		vote	share
Bulley D. Ms.*	Con	2,531	48.1
Madden P.	LD	1,504	28.6
Stevenson W.	Lab	1,224	23.3
	Turnout	68.1	19.5
Chalgrove (6050)			
		vote	share
Turner D.*	LD	2,529	54.3
Pritchard P. Ms.*	Con	1,395	30.0
Smith S.	Lab	730	15.7
	Turnout	77.3	24.4
Charlbury (6135)			
		vote	share
Hodgson J.*	Lab	2,076	40.7
Pacey R.	Con	1,742	34.1
Epps G.	LD	1,287	25.2
	Turnout	83.8	6.5
Chinnor (5743)			
		vote	share
Davis A. Ms.*	Con	2,265	50.9
Duffy O. Ms.	LD	1,369	30.8
McCartney M.	Lab	817	18.4
	Turnout	78.1	20.1
Chipping Norton (5487)			
		vote	share
Evans R.	Lab	1,864	44.7
Schroeder J. Ms.	Con	1,408	33.8
Walton G.	LD	678	16.3
Chaple-Perrie S. Ms.	Green	221	5.3
	Turnout	76.7	10.9
Cumnor (7207)			
		vote	share
Hook B.*	Con	2,557	44.1
Woodford J.	LD	2,375	41.0
Capaloff B.	Lab	864	14.9
	Turnout	80.9	3.1

Burford (6244)				Dorchester (6099)				Hinksey (7034)			
		vote	share			vote	share			vote	share
Seale D.*	Con	2,372	55.8	Tudor Hughes R.*	Con	1,506	40.1	Godden J. Ms.*	LD	1,900	40.3
Gibbons R.	Lab	804	18.9	Stimson J.	LD	1,020	27.2	Batts E.	Con	1,558	33.1
Williams E.	LD	775	18.2	Tanner J.	Lab	970	25.9	Clyne L.	Lab	675	14.3
Edmonds A. Ms.	Green	300	7.1	Scott D.	Green	256	6.8	Losito L. Ms.	Green	322	6.8
		Turnout	68.4			Turnout	61.8			Turnout	67.3
			36.9				13.0				7.3
Carterton (7851)				Drayton (5996)				Hormer (4763)			
		vote	share			vote	share			vote	share
Bulley D. Ms.*	Con	2,065	49.4	Mackenzie M. Ms.*	Lab	1,645	42.6	Johnston R.*	LD	1,507	47.4
Madden P.	LD	1,197	28.6	Bowder J.	Con	1,262	32.7	Standen J. Ms.	Con	1,155	36.3
Tumbridge W.	Lab	801	19.2	Howson J.	LD	775	20.1	Woodham B.	Lab	348	10.9
Benjamin E. Ms.	Green	117	2.8	Emerson J.	Green	176	4.6	Henderson C.	Green	169	5.3
		Turnout	53.6			Turnout	64.6			Turnout	67.3
			20.8				9.9				11.1
Chalgrove (6154)				Eynsham (7005)				Iffley (5869)			
		vote	share			vote	share			vote	share
Turner D.	LD	1,970	50.4	Wyatt H.*	LD	1,905	41.6	Segaran S.*	Lab	1,418	41.3
Pritchard P. Ms.	Con	1,244	31.8	Barnby D.	Con	1,601	35.0	Bones P. Ms.	LD	993	28.9
Turner E.*	Lab	576	14.7	Beadle R.	Lab	889	19.4	Dailey P. Ms.	Con	638	18.6
Tibbles S. Ms.	Green	119	3.0	Hemming G. Ms.	Green	183	4.0	Warwick H.	Green	382	11.1
		Turnout	63.7			Turnout	66.6			Turnout	59.0
			18.6				6.6				12.4
Charlbury (6442)				Faringdon (7471)				Kidlington North (6389)			
		vote	share			vote	share			vote	share
Hodgson J.*	Lab	1,747	37.1	Heathcoat J. Ms.*	Con	2,538	53.9	Witcher C. Ms.	Lab	1,303	33.9
Stacey B.	Con	1,679	35.6	Leniec S.	Lab	1,159	24.6	Griffith J.	Con	1,170	30.4
Epps P. Ms.	LD	1,127	23.9	Young G. Ms.	LD	818	17.4	Wyse J.	LD	1,128	29.3
Lucas E.	Green	157	3.3	Pethybridge S. Ms.	Green	196	4.2	Warren J. Ms.	Green	243	6.3
		Turnout	73.4			Turnout	63.4			Turnout	60.3
			1.4				29.3				3.5
Chinnor (5983)				Goring (6253)				Kidlington South (5413)			
		vote	share			vote	share			vote	share
Wilmshurst D.	Con	2,064	53.9	Farrow J.*	Con	2,089	48.8	Robins C.	Lab	1,274	36.4
Blyth P.	Lab	809	21.1	Peirce R.	LD	1,934	45.2	Munday H.	Con	1,203	34.4
Beech J.	LD	797	20.8	Sanders J.	Green	257	6.0	Rae D. Ms.	LD	886	25.3
Gooch J.	Green	160	4.2			Turnout	68.9	Carey J. Ms.	Green	139	4.0
		Turnout	64.3				3.6			Turnout	65.1
			32.8								2.0
Chipping Norton (5856)				Grove (5901)				Littlemore (5335)			
		vote	share			vote	share			vote	share
Evans R.*	Lab	1,552	40.7	Patrick Z. Ms.	LD	1,706	45.9	Stedman O. Ms.*	Lab	1,428	51.4
Macleod E. Ms.	Con	1,481	38.9	Harland A. Ms.	Con	1,315	35.4	Taylor C.	Con	663	23.9
Dawson C. Ms.	LD	551	14.5	Giaretta D.	Lab	589	15.9	Potter V. Ms.	LD	508	18.3
Chaple-Perrie S. Ms.	Green	225	5.9	Manning S. Ms.	Green	105	2.8	O'Brien D.	Green	179	6.4
		Turnout	65.3			Turnout	63.1			Turnout	52.7
			1.9				10.5				27.5
Cumnor (7271)				Hanborough (5937)				Marcham (5397)			
		vote	share			vote	share			vote	share
Hook B.*	Con	2,176	44.9	Dawes D.*	Con	1,909	46.0	Crawford A.	LD	1,561	43.4
Woodford J.	LD	1,731	35.8	Griffiths S.	LD	1,408	33.9	Evans M. Ms.*	Con	1,495	41.6
Edmonds-Brown C.	Lab	580	12.0	Enright M.	Lab	679	16.3	Fisher C.	Lab	429	11.9
Heslop A-M. Ms.	Green	354	7.3	Ingram P.	Green	157	3.8	Williams P.	Green	110	3.1
		Turnout	67.1			Turnout	70.2			Turnout	66.9
			9.2				12.1				1.8
Deddington (7643)				Headington (6603)				Moreton (6395)			
		vote	share			vote	share			vote	share
Matthews N.*	Con	2,670	51.8	Tompkins S. Ms.*	Lab	1,307	38.4	Greene P.	Con	1,845	42.2
Davis P.	LD	1,910	37.0	Stevens B. Ms.	LD	963	28.3	Worgan A.	LD	1,551	35.4
Griffiths R. Ms.	Green	577	11.2	Hibbert-Biles H. Ms.	Con	936	27.5	Swainston R.	Lab	789	18.0
		Turnout	68.2	Hitchins R.	Green	196	5.8	Pouget W.	Green	191	4.4
			14.7			Turnout	51.8			Turnout	68.6
							10.1				6.7
Didcot Manor (11648)				Henley North (5126)				New Marston (4853)			
		vote	share			vote	share			vote	share
Joslin T.*	Lab	2,529	36.7	Sanders G.*	Con	1,569	52.6	Standingford E. Ms.	Lab	1,385	45.5
Flood J.	Con	2,480	36.0	Haywood R.	LD	761	25.5	Burgess B. Ms.	Con	781	25.6
Jones A.	LD	1,691	24.5	Johnson T.	Lab	485	16.2	Rundle D.	LD	682	22.4
Lanchbery P. Ms.	Green	188	2.7	Tickell O.	Green	170	5.7	Wedell K. Ms.	Green	197	6.5
		Turnout	59.3			Turnout	58.6			Turnout	63.1
			0.7				27.1				19.8
Didcot Mereiland (5483)				Henley South (6584)				Old Marston (4938)			
		vote	share			vote	share			vote	share
Harris N.*	Lab	1,449	51.4	Law B.*	Con	2,105	60.0	McAndrews M.	Lab	973	31.2
Thompson A.	Con	712	25.3	Mannings A.	LD	937	26.7	Hall N.	LD	793	25.4
Parry J. Ms.	LD	542	19.2	Wanless I.	Green	259	7.4	Hatfield D.	Con	690	22.1
Brooks-Saxi D.	Green	116	4.1	Wymer J. Ms.	Lab	207	5.9	Tiwari K.	Ind	515	16.5
		Turnout	51.6			Turnout	53.7			Turnout	63.7
			26.1				33.3				5.8

Oxford Central (6338)			
		vote	share
Kyffin D.	LD	1,114	31.7
Dhali S. Ms.*	Green	1,054	30.0
Dougans R.	Con	691	19.7
Muir R.	Lab	656	18.7
Turnout		56.2	1.7

Oxford Cherwell (5204)			
		vote	share
Fooks J. Ms.	LD	1,189	35.5
Todd J. Ms.	Con	1,033	30.9
Bassett S. Ms.	Lab	701	20.9
Lee M.	Green	425	12.7
Turnout		64.8	4.7

Oxford East (5915)			
		vote	share
Brown A.	Lab	1,255	39.0
Sanders L.	Green	1,102	34.2
Brett A.	LD	501	15.5
Clare W.	Con	364	11.3
Turnout		54.9	4.7

Oxford North (5850)			
		vote	share
Roaf D.*	LD	1,273	38.8
Ledwith S. Ms.	Lab	637	19.4
Rigden I. Ms.	Green	619	18.9
Porter R.	Con	606	18.5
Rose J.	Ind	145	4.4
Turnout		56.3	19.4

Oxford South (6275)			
		vote	share
Karmali J. Ms.*	Lab	1,580	43.4
O'Neal D.	Green	947	26.0
Mort S.	Con	578	15.9
Kennedy K. Ms.	LD	537	14.7
Turnout		58.9	17.4

Oxford West (5986)			
		vote	share
Power J.*	Lab	1,423	40.6
Harris J.	LD	1,121	32.0
Farley E. Ms.	Green	554	15.8
Doody S.	Con	408	11.6
Turnout		59.0	8.6

Ploughley (9826)			
		vote	share
Fulljames C. Ms.*	Con	3,348	53.8
Blacker M.	Lab	1,465	23.5
Hunter J.	LD	1,143	18.4
Reeves S. Ms.	Green	271	4.4
Turnout		63.6	30.2

Quarry (6124)			
		vote	share
Godden M. Ms.*	LD	1,426	40.7
Dodds A. Ms.	Lab	1,120	32.0
Sanderson I.	Con	684	19.5
Dighton-Brown T. Ms.	Green	275	7.8
Turnout		57.5	8.7

Shrivenham (7221)			
		vote	share
Fitzgerald-O'Connor A.	Con	2,353	49.8
Mullin F.	LD	1,331	28.2
Hickmore A.	Lab	874	18.5
Reiss P. Ms.	Green	168	3.6
Turnout		65.8	21.6

Sonning Common (6084)			
		vote	share
Viney C. Ms.	Con	2,204	53.4
Poska J. Ms.	LD	1,173	28.4
McAndrew S. Ms.	Lab	748	18.1
Turnout		68.1	25.0

St. Clements (7583)			
		vote	share
Simmons C.*	Green	1,330	33.4
Courouble J.	Lab	1,098	27.6
Stone M.	LD	699	17.6
Hodgson P.	Con	581	14.6
Leake D.	Ind	269	6.8
Turnout		52.8	5.8

Temple Cowley (5663)			
		vote	share
Hudson B. Ms.	Lab	1,397	44.6
Hoyle R.	LD	1,001	32.0
Shomroni G. Ms.	Con	469	15.0
Patterson L. Ms.	Green	264	8.4
Turnout		55.7	12.6

Thame (8433)			
		vote	share
Ludlow D. Ms.*	Con	2,030	39.3
Gleeson P.	LD	1,840	35.7
Baker F. Ms.	Lab	1,105	21.4
Budin G.	Green	186	3.6
Turnout		61.5	3.7

Wallingford (6418)			
		vote	share
Bradshaw W.*	LD	2,185	54.2
Harrop S.	Con	1,122	27.8
Giaretta P. Ms.	Lab	603	14.9
Phelps S.	Green	125	3.1
Turnout		63.1	26.3

Wantage (7594)			
		vote	share
Moley J.*	LD	2,083	42.6
Langton C.	Con	1,436	29.4
Quinton S.	Lab	1,026	21.0
Harris K.	Green	340	7.0
Turnout		64.5	13.2

Wantage Rural (5728)			
		vote	share
Farrell R.	LD	1,776	44.3
Lamont C.*	Ind	1,457	36.3
Kelly F.	Lab	569	14.2
Edwards M.	Green	207	5.2
Turnout		70.7	8.0

Watlington (5858)			
		vote	share
Belson R.	Con	1,928	49.4
Horton T.*	LD	1,346	34.5
Newdick M.	Lab	428	11.0
Caldwell D. Ms.	Green	200	5.1
Turnout		66.8	14.9

Wheatley (7258)			
		vote	share
Purse P. Ms.*	LD	1,933	41.7
Walsh J.	Con	1,656	35.7
Andrews M.	Lab	871	18.8
Bevis X. Ms.	Green	173	3.7
Turnout		64.1	6.0

Witney North (5354)			
		vote	share
Robertson D.	Con	1,228	35.2
Holborough S.	LD	1,074	30.8
Wesson D.	Lab	916	26.2
Dossett-Davies R.	Green	274	7.8
Turnout		65.4	4.4

Witney South (7159)			
		vote	share
Cooper E.*	Lab	1,976	44.7
Harvey A.	Con	1,712	38.7
Minett O. Ms.	LD	581	13.1
Glass D. Ms.	Green	150	3.4
Turnout		62.0	6.0

Wolvercote (5540)			
		vote	share
Buck M.	Green	1,254	34.4
Dennis J.*	LD	1,117	30.7
Bland F.	Con	759	20.8
Bassett G.	Lab	511	14.0
Turnout		66.1	3.8

Wood Farm (6009)			
		vote	share
Brighthouse E. Ms.	Lab	1,507	46.7
Young J.	Con	831	25.7
Gowers B.	LD	512	15.9
Dalton D.	Green	260	8.1
Jenking R.	LIB	119	3.7
Turnout		54.3	20.9

Woodstock (5377)			
		vote	share
Cooper J.	LD	1,725	46.5
Rasch S. Ms.	Con	1,308	35.2
Marks S.	Lab	678	18.3
Turnout		69.4	11.2

Wroxton (6262)			
		vote	share
Reynolds G.*	Con	2,686	60.3
Probert M.	LD	1,351	30.3
James C. Ms.	Green	415	9.3
Turnout		71.7	30.0

Wychwood (5658)			
		vote	share
Rose R.*	Con	1,828	46.5
Jauncey S.	LD	1,414	35.9
Ashworth F. Ms.	Lab	550	14.0
Woodin M.	Green	143	3.6
Turnout		69.7	10.5

Yarnton & Otmoor (6375)			
		vote	share
Hastings M. Ms.	Con	1,978	45.5
Brown R. Ms.	LD	1,161	26.7
Page B.	Lab	908	20.9
Duffield C.	Green	301	6.9
Turnout		68.6	18.8

Wheatley (6460)			
		vote	share
Purse P. Ms.*	LD	2,168	49.6
Walsh J.	Con	1,304	29.8
Shields M.	Lab	610	13.9
Battye J.	Green	291	6.7
		Turnout	67.7 19.8

Witney North & East (7325)			
		vote	share
Robertson D.*	Con	1,912	39.2
Nicholson D.	LD	1,305	26.8
Wesson D.	Lab	962	19.7
Dossett-Davies R.	Green	698	14.3
		Turnout	66.6 12.4

Witney West (10728)²			
		vote	share
Harvey A.	Con	2,766	35.1
Hayward S.*	Con	2,474	-
Edney P.	Lab	2,050	26.0
Kelsall R.	Lab	1,747	-
Slamin P.	LD	1,454	18.5
Green P.	Ind	975	12.4
Dossett-Davies E. Ms.	Green	630	8.0
Simpson S. Ms.	Green	517	-
		Turnout	65.0 9.1

Woodstock (6742)			
		vote	share
Hudspeth I.	Con	1,964	40.8
Cooper J.*	LD	1,602	33.3
Carritt C.	Lab	915	19.0
Turnbull S. Ms.	Green	337	7.0
		Turnout	71.5 7.5

Wootton (6087)			
		vote	share
Wise C.	LD	1,705	41.1
Egawhary E.	Con	1,510	36.4
Paskins D.	Lab	383	9.2
Heslop A-M. Ms.	Green	324	7.8
Jones J. Ms.	UKIP	229	5.5
		Turnout	68.2 4.7

Wroxton (6418)			
		vote	share
Reynolds G.*	Con	2,788	57.8
Johnson J. Ms.	LD	887	18.4
Goodman H.	Lab	764	15.8
Franklin M. Ms.	Green	388	8.0
		Turnout	75.2 39.4

Wychwood (6326)			
		vote	share
Rose R.*	Con	2,487	54.7
West M.	LD	1,005	22.1
Burrows G. Ms.	Lab	749	16.5
Jones J. Ms.	Green	304	6.7
		Turnout	71.8 32.6

Oxfordshire 2009

Abingdon East (7714)			
		vote	share
Jones P.	Con	1,308	42.5
De Vere T.	LD	1,164	37.8
Bullock R.	Green	431	14.0
Wynn B. Ms.	Lab	175	5.7
		Turnout	40.0 4.7

Abingdon North (7245)			
		vote	share
Lovatt S.	Con	1,402	45.2
Lawrence A. Ms.	LD	1,177	37.9
Heslop A. Ms.	Green	334	10.8
Watt D. Ms.	Lab	189	6.1
		Turnout	43.2 7.3

Abingdon West (12140)²			
		vote	share
Badcock M.*	Con	1,843	40.5
Badcock M. Ms.*	Con	1,836	40.5
Webber R.	LD	1,770	38.9
Fawcett N.	LD	1,754	-
Hornblow H. Ms.	Green	621	13.7
Bottley R. Ms.	Green	485	-
Banner D.	Lab	314	6.9
Bance A. Ms.	Lab	262	-
		Turnout	36.8 0.0

Bampton (5983)			
		vote	share
Seale D.*	Con	1,815	66.6
Taylor J. Ms.	LD	351	12.9
Willans O.	Green	299	11.0
Albert M.	Lab	259	9.5
		Turnout	45.7 53.7

Banbury Easington (6414)			
		vote	share
Mallon K.*	Con	1,199	54.3
Miah A.	Green	318	14.4
Williams J.	UKIP	307	13.9
Watts R.	LD	224	10.1
Meadows J.	Lab	162	7.3
		Turnout	34.6 39.9

Banbury Grimsbury & Castle (7055)			
		vote	share
Bonner A. Ms.	Con	1,013	51.0
Mold S. Ms.	Lab	367	18.5
Wren L. Ms.	UKIP	275	13.8
Watts N. Ms.	LD	171	8.6
Allcock M. Ms.	Green	161	8.1
		Turnout	28.3 32.5

Banbury Hardwick (7364)			
		vote	share
Turner N.*	Con	906	44.9
Brown J.	UKIP	406	20.1
Woodcock S.	Lab	329	16.3
Jordan C. Ms.	LD	212	10.5
Hartley S.	Green	164	8.1
		Turnout	27.6 24.8

Banbury Neithrop (6698)			
		vote	share
Ahmed A.	Con	959	40.7
Dhesi S.*	Lab	618	26.2
Robinson D.	UKIP	447	19.0
Willett J.	LD	192	8.1
Scrase R.	Green	140	5.9
		Turnout	35.4 14.5

Banbury Ruscote (5804)			
		vote	share
Strangwood K.	Con	597	35.9
Cartledge P.*	Lab	571	34.3
Williamson J.	UKIP	307	18.5
Burns T.	LD	111	6.7
Coleman J.	Green	77	4.6
		Turnout	28.8 1.6

Barton & Churchill (14208)²			
		vote	share
Smith R. Ms.*	LD	1,554	29.2
Brighthouse L. Ms.*	Lab	1,502	28.2
Murray P.	LD	1,286	-
Coulter V.	Lab	1,228	-
Hamer T.	Con	893	16.8
Macgregor T. Ms.	Con	820	-
Gaspar J. Ms.	UKIP	541	10.2
Hitchins R.	Green	523	9.8
Furtado P.	Green	418	-
Bonney P.	Ind	309	5.8
		Turnout	32.1 1.0

Benson (6032)			
		vote	share
Crabbe T.*	Con	1,515	59.8
Griffin J.	LD	530	20.9
Fenn T.	Green	370	14.6
Wood A.	Lab	118	4.7
		Turnout	42.2 38.9

Bicester (18521)³			
		vote	share
Bolster N.*	Con	3,349	51.4
Waine M.*	Con	3,260	-
Stratford L.*	Con	3,117	-
Sibley L.	Lab	1,669	25.6
Chadwick M.	LD	911	14.0
Broad J.	Lab	871	-
Hasted A.	Lab	821	-
Creed S.	LD	804	-
Shakespeare B.	LD	760	-
Taylor L. Ms.	Green	585	9.0
Meaney K.	Green	526	-
Pantlin R.	Green	479	-
		Turnout	31.0 25.8

Bicester South (6018)			
		vote	share
Shouler C.*	Con	1,375	63.2
Walton N.	LD	436	20.0
Duffield C.	Green	216	9.9
Lynch M. Ms.	Lab	149	6.8
		Turnout	36.4 43.2

Bloxham (6909)			
		vote	share
Mitchell K.*	Con	1,958	66.2
Davis P.	LD	488	16.5
Fielding C. Ms.	Green	309	10.4
Brown E. Ms.	Lab	203	6.9
		Turnout	43.1 49.7

Burford & Carterton North (6617)			
		vote	share
Couchman J.*	Con	1,524	64.2
Wesson P.	Ind	316	13.3
Taylor R. Ms.	Green	234	9.9
Lilly J.	LD	201	8.5
Ashworth F. Ms.	Lab	99	4.2
		Turnout	36.1 50.9

Carterton South West (6178)			
		vote	share
Handley P.*	Con	1,505	67.2
Madden P.	LD	437	19.5
Hilton E. Ms.	Green	170	7.6
Tumbridge B.	Lab	129	5.8
		Turnout	36.8 47.7

Chalgrove (6019)			
		vote	share
Turner D.*	LD	1,365	49.7
Keene E.	Con	1,021	37.1
Tibbles S. Ms.	Green	240	8.7
Collins P.	Lab	123	4.5
		Turnout	46.0 12.5

Otmoor & Kirtlington (5479)

		vote	share
Hallchurch T.*	Con	1,215	53.0
Cooper S. Ms.	LD	364	15.9
Bird D.	UKIP	263	11.5
Willson C. Ms.	Green	250	10.9
Hornsby-Smith A.	Lab	199	8.7
Turnout		41.9	37.1

Ploughley (5901)

		vote	share
Fulljames C. Ms.*	Con	1,576	63.7
Yardley L. Ms.	LD	308	12.5
Fairweather B. Ms.	UKIP	281	11.4
Prendergast K. Ms.	Green	173	7.0
Darbyshire J.	Lab	135	5.5
Turnout		42.0	51.3

Shrivenham (7073)

		vote	share
Fitzgerald-O'Connor A.	Con	1,707	
		59.8	
Sadler B.	LD	612	21.4
Pethybridge S. Ms.	Green	387	13.6
Hickmore A.	Lab	150	5.3
Turnout		40.6	38.3

Sonning Common (5781)

		vote	share
Viney C. Ms.*	Con	1,843	66.2
Wardle P.	LD	450	16.2
Major S.	Green	349	12.5
Hazell B. Ms.	Lab	140	5.0
Turnout		48.3	50.1

Summertown & Wolvercote (13655)²

		vote	share
Fooks J. Ms.*	LD	2,392	39.0
Goddard J.	LD	2,103	-
Goodall C.	Green	1,684	27.5
Kennett F. Ms.	Con	1,560	25.5
Porter V.	Con	1,446	-
Sherwood L. Ms.	Green	1,198	-
Pounds K. Ms.	Lab	492	8.0
Taylor M.	Lab	427	-
Turnout		41.6	11.6

Sutton Courtenay & Harwell (6772)

		vote	share
Lilly S.	Con	1,655	55.2
Thompson S.	LD	725	24.2
Johnson R. Ms.	Green	414	13.8
Matthews J.	Lab	205	6.8
Turnout		44.7	31.0

Thame & Chinnor (13600)²

		vote	share
Carter N.*	Con	2,759	53.2
Wilmshurst D.*	Con	2,639	-
Bretherton D.	LD	1,632	31.5
Laver D.	LD	1,531	-
Curtis S.	Green	513	9.9
Levison B.	Green	490	-
Atkinson W.	Lab	280	5.4
Brown S. Ms.	Lab	275	-
Turnout		37.5	21.7

Wallingford (6697)

		vote	share
Atkins L. Ms.	Ind	1,440	54.0
Nye S-A. Ms.	Con	835	31.3
Forman B.	Green	236	8.8
Winters M. Ms.	Lab	157	5.9
Turnout		40.0	22.7

Watlington (4663)

		vote	share
Belson R.*	Con	1,720	68.8
Platts M.	LD	374	15.0
Cox M.	Green	292	11.7
Lygo M.	Lab	114	4.6
Turnout		53.9	53.8

West Central Oxford (13656)²

		vote	share
Pressel S. Ms.	Lab	1,583	29.6
Armitage A.*	LD	1,478	27.6
Dhall S. Ms.*	Green	1,350	25.2
Weatherall R. Ms.	LD	1,342	-
Ledwith S. Ms.	Lab	1,118	-
Sargent P.	Con	937	17.5
Wilson B.	Con	931	-
Lyons M.	Green	840	-
Turnout		35.3	2.0

Wheatley (5966)

		vote	share
Purse A. Ms.*	LD	1,403	51.9
Walsh J.	Con	1,119	41.4
Graw J. Ms.	Lab	182	6.7
Turnout		45.7	10.5

Witney North & East (8866)

		vote	share
Robertson D.*	Con	1,865	55.4
Dossett-Davies R.	Green	658	19.6
Enright D.	Lab	464	13.8
Workman G. Ms.	LD	377	11.2
Turnout		38.2	35.9

Witney West (11412)²

		vote	share
Harvey D.*	Con	2,112	42.2
Hayward S.*	Con	1,951	-
Simpson S. Ms.	Green	876	17.5
Churchill B. Ms.	LD	796	15.9
Phipps D.	UKIP	759	15.2
Johnson C.	Lab	462	9.2
Wesson D.	Lab	433	-
Turnout		32.5	24.7

Woodstock (6837)

		vote	share
Hudspeth I.*	Con	1,746	55.3
Cooper J.	LD	884	28.0
Jackson H.	Green	319	10.1
Burton H.	Lab	206	6.5
Turnout		46.4	27.3

Wootton (6597)

		vote	share
Gearing A.	Con	1,136	40.3
Hoddinott D.	LD	960	34.0
Jones J. Ms.	UKIP	353	12.5
Spragg M. Ms.	Green	262	9.3
Watts T.	Lab	109	3.9
Turnout		42.8	6.2

Wroxton (6480)

		vote	share
Reynolds G.*	Con	2,153	69.2
Murray A.	LD	444	14.3
Shields M. Ms.	Green	328	10.5
Seamons S.	Lab	188	6.0
Turnout		48.3	54.9

Wychwood (6395)

		vote	share
Rose R.*	Con	1,830	64.3
Blount C.	LD	493	17.3
Kopinska H. Ms.	Green	287	10.1
Gittings J.	Lab	235	8.3
Turnout		44.7	47.0

