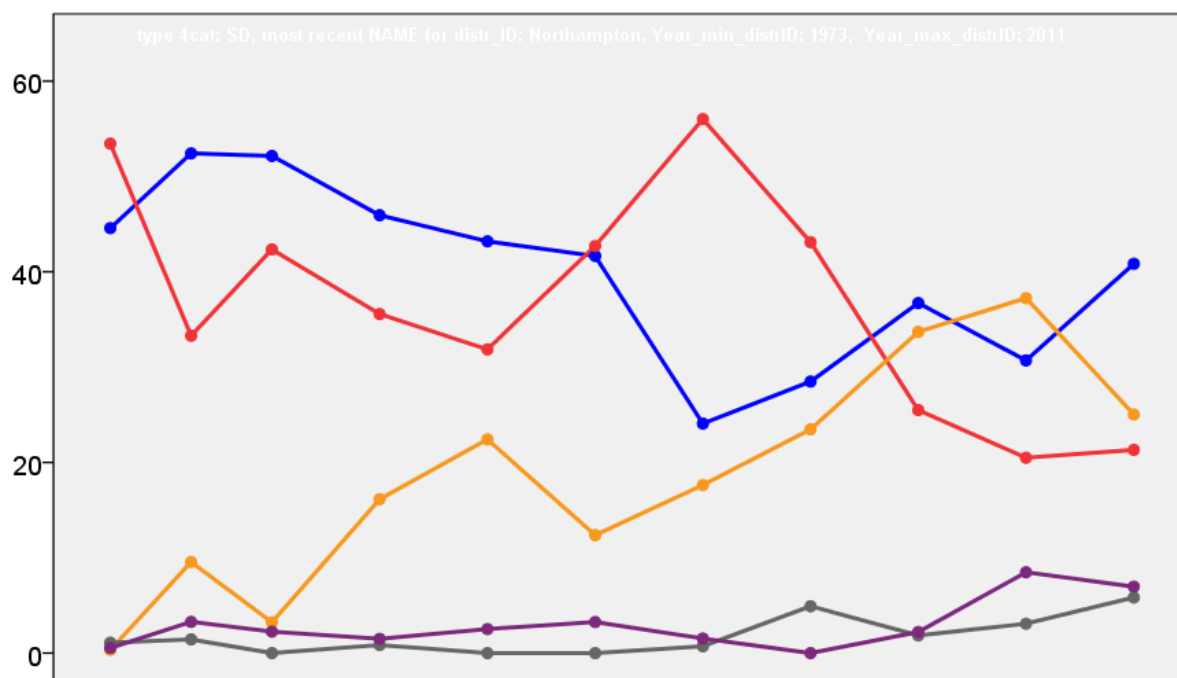


Northampton Borough Council Election Results 1973-2011



Colin Rallings and Michael Thrasher
The Elections Centre
Plymouth University

The information contained in this report has been obtained from a number of sources. Election results from the immediate post-reorganisation period were painstakingly collected by Alan Willis largely, although not exclusively, from local newspaper reports. From the mid-1980s onwards the results have been obtained from each local authority by the Elections Centre. The data are stored in a database designed by Lawrence Ware and maintained by Brian Cheal and others at Plymouth University. Despite our best efforts some information remains elusive whilst we accept that some errors are likely to remain. Notice of any mistakes should be sent to elections@plymouth.ac.uk. The results sequence can be kept up to date by purchasing copies of the annual Local Elections Handbook, details of which can be obtained by contacting the email address above.

Front cover: the graph shows the distribution of percentage vote shares over the period covered by the results. The lines reflect the colours traditionally used by the three main parties. The grey line is the share obtained by Independent candidates while the purple line groups together the vote shares for all other parties.

Rear cover: the top graph shows the percentage share of council seats for the main parties as well as those won by Independents and other parties. The lines take account of any by-election changes (but not those resulting from elected councillors switching party allegiance) as well as the transfers of seats during the main round of local election.

The lower graph shows for each main round of local elections the overall percentage turnout (solid line), the percentage of women candidates standing at (dotted line) and the percentage of women among those elected (hashed line).

Northampton - 1973

No. 1 (Northampton: Abington) (7438) ⁴			
		vote	share
Barnes J.	Con	1,625	52.1
James S.	Con	1,504	-
Bailey T.	Lab	1,495	47.9
Turner J.	Con	1,492	-
Ashby N.	Lab	1,477	-
Raca J.	Con	1,434	-
Jackson K.	Lab	1,409	-
Sharman W.	Lab	1,321	-
Turnout		41.9	4.2

No. 10 (Northampton: South) (5924) ³			
		vote	share
Ambidge J.	Con	1,381	55.9
Dove J.	Con	1,366	-
Aldridge M.	Con	1,323	-
Earp E.	Lab	1,089	44.1
Glazebrook L.	Lab	1,052	-
Miller A.	Lab	1,027	-
Turnout		41.7	11.8

No. 11 (Northampton: Duston) (8879) ⁴			
		vote	share
Finch M. Ms.	Con	1,664	52.4
Orton-Jones D.	Con	1,532	-
Gardner J.	Lab	1,512	47.6
Prouse A.	Con	1,510	-
Baxter D.	Con	1,456	-
Ryan J.	Lab	1,403	-
Frost F.	Lab	1,392	-
Thurston K.	Lab	1,376	-
Turnout		35.8	4.8

No. 12 (Northampton: Weston) (8439) ⁴			
		vote	share
Williams D.	Con	2,013	68.9
Coker E.	Con	2,009	-
Pollard G.	Con	2,000	-
Chown T.	Con	1,929	-
Stevens B.	Lab	908	31.1
Lloyd C. Ms.	Lab	843	-
Dickie R. Ms.	Lab	837	-
Donergan J.	Lab	823	-
Turnout		34.6	37.8

No. 13 (Wotton) (1658)			
		vote	share
Miller R.	Con	0	0.0
Turnout		0.0	0.0

No. 14 (Hardingstone) (1444)			
		vote	share
Pittams A.	Con	285	47.1
Barker P. Ms.	Lib	115	19.0
Rigby J.	Ind	109	18.0
Brind D.	Lab	96	15.9
Turnout		41.9	28.1

No. 15 (Billing) (1269)			
		vote	share
Davies D. Ms.	Con	0	0.0
Turnout		0.0	0.0

No. 2 (Northampton: Castle) (8276) ⁴			
		vote	share
Howes G.	Lab	2,225	73.9
Mason G.	Lab	2,200	-
Tero F.	Lab	2,196	-
Dickie J.	Lab	2,184	-
Lipman R.	Con	787	26.1
Bracken A.	Con	737	-
Turnout		36.4	47.7

No. 3 (Northampton: Dallington) (7776) ⁴			
		vote	share
Fitzhugh E. Ms.	Lab	1,598	73.6
Littlewood E.	Lab	1,565	-
Desborough F.	Lab	1,550	-
Amos S.	Lab	1,457	-
Ayres A.	Con	394	18.1
Tyrrell W.	Comm	179	8.2
Turnout		27.9	55.5

No. 4 (Northampton: Delapre) (6647) ³			
		vote	share
Taylor G.	Lab	1,524	65.5
Clay M.	Lab	1,473	-
Winter R.	Lab	1,468	-
Preston T.	Con	802	34.5
Sewell T.	Con	747	-
Turnout		35.0	31.0

No. 5 (Northampton: Kingsthorpe) (10389) ⁵			
		vote	share
Bigley J.	Lab	1,817	54.5
Berry A.	Lab	1,802	-
Berridge P. Ms.	Lab	1,770	-
Pearce A. Ms.	Lab	1,729	-
Thomas J. Ms.	Lab	1,724	-
Desborough M.	Con	1,515	45.5
Findlay E.	Con	1,466	-
Harland W.	Con	1,431	-
Findlay P. Ms.	Con	1,400	-
Liddington M. Ms.	Con	1,384	-
Turnout		32.1	9.1

No. 6 (Northampton: Park) (8201) ⁴			
		vote	share
Pearson K.	Con	1,765	51.6
Walmsley D.	Con	1,744	-
Hargrave A.	Con	1,705	-
Benton C.	Con	1,678	-
Butlin D.	Lab	1,653	48.4
O'Neill J.	Lab	1,643	-
Thomas M.	Lab	1,609	-
Stevenson J.	Lab	1,591	-
Turnout		41.7	3.3

No. 7 (Northampton: St. Crispin) (5616) ³			
		vote	share
Billson A.	Lab	1,103	62.4
Dilleigh R.	Lab	1,082	-
Lamin D.	Lab	991	-
Sismey G.	Con	409	23.1
Tear P.	Con	379	-
Allen M.	Con	368	-
Hill H.	Ind	256	14.5
Turnout		31.5	39.3

No. 8 (Northampton: St. David) (8028) ⁴			
		vote	share
Brown G.	Lab	1,830	72.4
Hiams P.	Lab	1,731	-
Lindsell R.	Lab	1,692	-
Rawlings J.	Lab	1,640	-
Morgan C.	Con	699	27.6
Borrell A.	Con	662	-
Turnout		31.5	44.7

No. 9 (Northampton: St. George) (6986) ³			
		vote	share
Corrin J.	Con	1,537	60.9
Dicks J. Ms.	Con	1,524	-
Harris R.	Con	1,481	-
Corcoran T.	Lab	985	39.1
Drage H.	Lab	952	-
Bryan I.	Lab	869	-
Turnout		36.1	21.9

Northampton - 1976

No. 1 (Northampton: Abington) (7289) ⁴			
		vote	share
Barnes J.	Con	1,982	56.9
James S.	Con	1,939	-
Turner J.	Con	1,851	-
Raca J.	Con	1,788	-
Bailey T.	Lab	1,065	30.6
Ashby N.	Lab	1,005	-
Fruish H.	Lab	928	-
Pearce A. Ms.	Lab	865	-
Gaunt P.	Lib	436	12.5
Yeandle A.	Lib	345	-
Turnout		45.6	26.3

No. 10 (Northampton: South) (4961) ³			
		vote	share
Ambidge J.	Con	1,595	77.1
Aldridge M.	Con	1,594	-
Dove J.	Con	1,519	-
Clarke L.	Lab	475	22.9
Taylor G.	Lab	447	-
Turnout		43.9	54.1

No. 11 (Northampton: Duston) (9067) ⁴			
		vote	share
Finch M. Ms.	Con	2,718	52.8
Orton-Jones M.	Con	2,554	-
Prouse B.	Con	2,486	-
Edwards D.	Con	2,422	-
Gardner J.	Lab	1,877	36.4
Ryan J.	Lab	1,330	-
Barber V. Ms.	Lab	1,325	-
Kelly W.	Lab	1,321	-
Scott A.	Lib	557	10.8
Turnout		49.3	16.3

No. 12 (Northampton: Weston) (12940) ⁴			
		vote	share
Pollard G.	Con	3,726	69.7
Chown T.	Con	3,626	-
Coker E.	Con	3,624	-
Fordyce G.	Con	3,507	-
Cox A.	Lab	1,619	30.3
Turnout		42.3	39.4

No. 13 (Wotton) (1706)			
		vote	share
Sunley L.	Con	0	0.0
Turnout		0.0	0.0

No. 14 (Hardingstone) (1406)			
		vote	share
Pittams A.	Con	356	53.4
Corp F. Ms.	Lib	159	23.8
Rigby J.	Ind	152	22.8
Turnout		47.4	29.5

No. 15 (Billing) (1568)			
		vote	share
Davies D. Ms.	Con	0	0.0
Turnout		0.0	0.0

No. 2 (Northampton: Castle) (8096) ⁴			
		vote	share
Dickie J.	Lab	1,920	60.7
Mason G.	Lab	1,853	-
Howes G.	Lab	1,850	-
Dickie R. Ms.	Lab	1,823	-
Bracken A.	Con	1,243	39.3
Bracken C. Ms.	Con	1,148	-
Turnout		42.6	21.4

No. 3 (Northampton: Dallington) (7595) ⁴			
		vote	share
Littlewood E.	Lab	1,353	54.2
Desborough F.	Lab	1,269	-
Fitzhugh E. Ms.	Lab	1,241	-
Amos S.	Lab	1,181	-
Bruley M.	Con	1,023	41.0
Nicholas D.	Con	1,016	-
Nicholas S. Ms.	Con	998	-
Elmes R.	Con	997	-
Tyrrell W.	Comm	121	4.8
Turnout		35.1	13.2

No. 4 (Northampton: Delapre) (6821) ³			
		vote	share
Lloyd M.	Con	1,173	37.3
Earp E.	Lab	1,113	35.4
Freeman S. Ms.	Con	1,110	-
Conway P.	Lab	1,103	-
Prouse T.	Con	1,073	-
Berry A.	Lab	1,043	-
Smith J.	Ind	479	15.2
Umney R.	Lib	376	12.0
Willis M.	Lib	306	-
Rock A. Ms.	Lib	292	-
Turnout		44.4	1.9

No. 5 (Northampton: Kingsthorpe) (11459) ⁵			
		vote	share
Coleman J.	Con	2,569	40.6
Desborough M.	Con	2,464	-
Liddington R.	Con	2,363	-
Liddington M. Ms.	Con	2,359	-
McCloy C.	Con	2,340	-
Bigley J.	Lab	1,719	27.1
Berridge P. Ms.	Lab	1,688	-
McQuillan A.	Lab	1,563	-
Lamb K.	Lab	1,521	-
Hallman P.	Lab	1,450	-
Charteress W.	Res	1,323	20.9
Eccles P.	Res	1,215	-
Hill H.	Res	1,019	-
Dennis P.	Lib	721	11.4
Grant K.	Lib	681	-
Turnout		46.9	13.4

No. 6 (Northampton: Park) (9157) ⁴			
		vote	share
Pearson K.	Con	2,737	61.4
Benton C.	Con	2,655	-
Hargrave A.	Con	2,649	-
Walmsley D.	Con	2,646	-
O'Neill J.	Lab	1,165	26.1
Thomas M.	Lab	1,157	-
McDonnell P.	Lab	1,142	-
Liburd S.	Lab	1,078	-
Miller C.	Lib	558	12.5
Turnout		47.5	35.2

No. 7 (Northampton: St. Crispin) (4844) ³			
		vote	share
Billson A.	Lab	668	45.1
Lamin D.	Lab	649	-
Dilleigh R.	Lab	642	-
Tear P.	Con	585	39.5
Massey B.	Con	574	-
Tear Y. Ms.	Con	529	-
Newsome D.	Lib	228	15.4
Turnout		30.6	5.6

No. 8 (Northampton: St. David) (8176) ⁴			
		vote	share
Hiams P.	Lab	1,673	46.0
Linsdell R.	Lab	1,618	-
Thomas J. Ms.	Lab	1,484	-
Winter R.	Lab	1,458	-
Hinde R.	Con	1,414	38.9
Bowler M. Ms.	Con	1,395	-
Morgan R.	Con	1,380	-
Lunn D.	Con	1,345	-
Meade K.	Lib	551	15.1
Turnout		42.4	7.1

No. 9 (Northampton: St. George) (6702) ³			
		vote	share
Corrin J.	Con	1,942	75.8
Dicks J. Ms.	Con	1,909	-
Harris R.	Con	1,805	-
Jeyes E.	Lib	619	24.2
Barker V.	Lib	617	-
Turnout		37.5	51.7

Northampton - 1979

Abington (5352) ²			
		vote	share
Raca J.	Con	2,159	61.6
James S.	Con	1,924	-
Dickie R. Ms.	Lab	1,347	38.4
Johnson S.	Lab	1,212	-
Turnout		65.5	23.2

Billing (2909) ²			
		vote	share
Price W.	Con	1,098	59.3
Yates B.	Con	961	-
Brown C.	Lab	754	40.7
Perry B.	Lab	733	-
Turnout		63.7	18.6

Boughton Green (4678) ²			
		vote	share
Baker R.	Con	1,917	53.6
Starr C.	Con	1,672	-
Bigley J.	Lab	1,659	46.4
Garnett S. Ms.	Lab	1,414	-
Turnout		76.4	7.2

Castle (6047) ²			
		vote	share
Dickie J.	Lab	2,552	64.6
Howes G.	Lab	2,378	-
Harris J.	Con	1,398	35.4
Edwards A. Ms.	Con	1,270	-
Turnout		65.3	29.2

Dallington & Kings Heath (7882) ³			
		vote	share
Desborough F.	Lab	2,995	65.1
Andrews R.	Lab	2,865	-
Littlewood E.	Lab	2,628	-
Elmes R.	Con	1,605	34.9
McAdam S.	Con	1,583	-
Thompson P.	Con	1,574	-
Turnout		58.4	30.2

Delapre (5817) ²			
		vote	share
Earp E.	Lab	1,966	44.7
Lamin D.	Lab	1,754	-
Prouse T.	Con	1,687	38.3
Freeman S. Ms.	Con	1,680	-
O'Neill J. Ms.	Ind Lab	618	14.0
Smith M.	NF	129	2.9
Turnout		75.6	6.3

Headlands (4995) ²			
		vote	share
Chown T.	Con	2,446	64.6
Hargrave A.	Con	2,353	-
Stevens B.	Lab	1,342	35.4
Howes A. Ms.	Lab	1,334	-
Turnout		75.8	29.1

Kingsthorpe (4823) ²			
		vote	share
Coleman A.	Con	1,569	39.8
Willmer L.	Con	1,297	-
Rounthwaite A.	Lib	1,251	31.7
Samson L. Ms.	Lab	1,123	28.5
Grant K.	Lib	590	-
Turnout		81.8	8.1

Links (6490) ²			
		vote	share
Bunker B.	Lab	2,567	57.2
Linsdell R.	Lab	2,453	-
Edge A.	Con	1,920	42.8
Jones W.	Con	1,911	-
Turnout		69.1	14.4

Lumbertubs (4371) ²			
		vote	share
Berry A.	Lab	1,519	58.8
Bailey T.	Lab	1,499	-
Farrell R.	Con	1,064	41.2
Russell G.	Con	1,046	-
Turnout		59.1	17.6

Nene Valley (4418) ²			
		vote	share
Lloyd M.	Con	2,164	67.3
Sunley L.	Con	1,972	-
Earp D. Ms.	Lab	1,052	32.7
Minney G.	Lab	945	-
Turnout		72.8	34.6

New Duston (5801) ²			
		vote	share
Finch M. Ms.	Con	2,467	53.1
Prouse A.	Con	2,254	-
Gardner J.	Lab	2,177	46.9
Kelly W. Ms.	Lab	1,675	-
Turnout		80.1	6.2

Old Duston (5557) ²			
		vote	share
Edwards D.	Con	2,562	62.5
Bruley M.	Con	2,467	-
Abbott I. Ms.	Lab	1,536	37.5
Packer S.	Lab	1,441	-
Turnout		73.7	25.0

Park (6486) ²			
		vote	share
Walmsley D.	Con	3,201	66.5
Benton C.	Con	3,148	-
McGrory C. Ms.	Lab	1,611	33.5
Thomas M.	Lab	1,455	-
Turnout		74.2	33.0

South (4834) ²			
		vote	share
Ambidge J.	Con	2,094	64.1
Dove J.	Con	2,048	-
Clarke L.	Lab	1,171	35.9
Taylor G.	Lab	1,073	-
Turnout		67.5	28.3

St. Albans (5033) ²			
		vote	share
Winter R.	Lab	1,876	53.0
Liburd S.	Lab	1,763	-
Ellis S.	Con	1,664	47.0
Bullock M.	Con	1,587	-
Turnout		70.3	6.0

St. Crispin (4850) ²			
		vote	share
Massey W.	Con	1,032	33.8
Evans F.	Con	952	-
Dilleigh R.	Ind Lab	943	30.8
Billson A.	Ind Lab	915	-
Ashby N.	Lab	660	21.6
Ball D.	Lab	655	-
Eade R.	Lib	422	13.8
Conway R.	Lib	415	-
Turnout		63.0	2.9

St. Georges (5224)²

		vote	share
Dicks J. Ms.	Con	1,939	48.8
Harris R.	Con	1,855	-
Buckle H. Ms.	Lab	1,212	30.5
Barker V.	Lib	824	20.7
Lishman A.	Lib	721	-
Turnout		76.1	18.3

Thorplands (2806)²

		vote	share
Conway P.	Lab	876	48.6
Dee B.	Lab	869	-
Pateman P.	Con	746	41.4
Onn G.	Con	715	-
Humphrey M.	Comm	182	10.1
Turnout		64.3	7.2

Welford (5404)²

		vote	share
Liddington R.	Con	2,491	64.8
Liddington M. Ms.	Con	2,478	-
Bryan I.	Lab	1,353	35.2
Wishart A. Ms.	Lab	1,347	-
Turnout		71.1	29.6

Weston (5971)²

		vote	share
Stimpson A.	Con	3,035	69.4
Smith L.	Con	2,976	-
Anstey M.	Lab	1,339	30.6
Vivian D.	Lab	1,284	-
Turnout		73.3	38.8

Northampton - 1983**Abington (5463)²**

		vote	share
James S.	Con	1,136	43.6
Raca J.	Con	1,116	-
Harvey C.	Lab	749	28.8
McCutcheon A.	Lab	716	-
Oakman V.	Lib/SDP	645	24.8
Markham B.	Lib/SDP	612	-
Green M.	Ecol	73	2.8
Turnout		47.6	14.9

Billing (4755)²

		vote	share
Linnett R.	Con	1,121	56.7
Morgan R.	Con	1,078	-
Hughes R.	Lab	505	25.5
Gravesande U.	Lab	459	-
Hughes D.	Lib/SDP	352	17.8
Woodgett B.	Lib/SDP	283	-
Turnout		41.6	31.1

Boughton Green (4977)²

		vote	share
Teulon C. Ms.	Lib/SDP	933	39.1
Skittrall S. Ms.	Lib/SDP	933	-
Baker R.	Con	804	33.7
Baker M.	Con	762	-
Johnson S.	Lab	647	27.1
Bigley J.	Lab	641	-
Turnout		47.9	5.4

Castle (6442)²

		vote	share
Dickie J.	Lab	1,575	58.2
Howes G.	Lab	1,547	-
Dawe M.	Con	715	26.4
Bruley M.	Con	671	-
Kenning E.	Lib/SDP	316	11.7
Roderick P.	Ecol	101	3.7
Turnout		42.0	31.8

Dallington & Kings Heath (8212)³

		vote	share
Gardner J.	Lab	1,632	55.4
Starmer A.	Lab	1,570	-
Bliss K.	Lab	1,412	-
Elmes R.	Con	734	24.9
Baker P.	Con	668	-
Brown D.	Con	621	-
Desborough F.	Lib/SDP	580	19.7
Angier T.	Lib/SDP	501	-
Turnout		35.9	30.5

Delapre (5858)²

		vote	share
Scott A.	Lab	1,113	42.9
Ball D.	Lab	1,025	-
Smith D.	Con	847	32.7
Onn G.	Con	775	-
Lamin D.*	Lib/SDP	634	24.4
Earp E.*	Lib/SDP	570	-
Turnout		44.3	10.3

Headlands (5161)²

		vote	share
Chown T.	Con	1,555	69.3
Hargrave A.	Con	1,549	-
Kane T.	Lab	689	30.7
Young M.	Lab	642	-
Turnout		43.5	38.6

Kingsthorpe (5214)²

		vote	share
Rounthwaite T.	Lib/SDP	1,288	48.8
Church R.	Lib/SDP	1,121	-
Coleman J.	Con	779	29.5
Willmer L.	Con	708	-
Shepherd R.	Lab	574	21.7
Corrie B.	Lab	569	-
Turnout		50.7	19.3

Links (6603)²

		vote	share
Linsdell R.	Lab	1,385	51.3
Nightingale E. Ms.	Lab	1,138	-
Hughston-Roberts J.	Con	819	30.3
Darlowe P. Ms.	Con	807	-
Scaife P.	Lib/SDP	495	18.3
Turnout		40.9	21.0

Lumbertubs (5916)²

		vote	share
Berry T.	Lab	1,061	55.1
Bailey T.	Lab	1,011	-
Forster C.	Con	863	44.9
Hawker G.	Con	737	-
Turnout		32.5	10.3

Nene Valley (5276)²

		vote	share
Lloyd M.	Con	1,316	53.5
Halford J.	Con	1,311	-
Jones M. Ms.	Lab	610	24.8
Yates A.	Lab	546	-
Walker A.	Lib/SDP	416	16.9
Billson E.	Lib/SDP	387	-
Lander E. Ms.	Ecol	116	4.7
Turnout		46.6	28.7

New Duston (5976)²

		vote	share
Prouse B.	Con	1,503	50.1
Bridle E. Ms.	Lab	959	32.0
Larbey J.	Lab	950	-
Long D.	Lib/SDP	538	17.9
Kairis P.	Lib/SDP	411	-
Turnout		50.2	18.1

Old Duston (5959)²

		vote	share
Finch M. Ms.	Con	1,790	66.6
Edwards D.	Con	1,758	-
Howard D.	Lab	899	33.4
Spooner R.	Lab	791	-
Turnout		45.1	33.1

Park (7154)²

		vote	share
Walmsley D.	Con	1,770	42.3
Benton C.	Con	1,653	-
Dixon J.	Lab	943	22.5
Allenby J.	Lib/SDP	522	12.5
Whittaker I.	Ind Con	503	12.0
Peall E. Ms.	Lib/SDP	493	-
Potts D. Ms.	Ind	450	10.7
Turnout		58.5	19.7

South (5406)²

		vote	share
Ceybird R.	Con	1,452	66.1
Evans F.	Con	1,401	-
Andrews R.	Lab	745	33.9
Kirton R.	Lab	730	-
Turnout		40.6	32.2

St. Albans (5114)²

		vote	share
Winter R.	Lab	1,173	47.8
Liburd S.	Lab	1,127	-
Gardener I.	Con	1,005	40.9
Goodman D.	Con	991	-
Cressey B.	Lib/SDP	278	11.3
O'Neill M.	Lib/SDP	256	-
Turnout		48.0	6.8

St. Crispin (5033)²

		vote	share
Bunker B.	Lab	1,084	66.0
Howes A. Ms.	Lab	999	-
Fielder L.	Con	558	34.0
Simmons J.	Con	557	-
Turnout		32.6	32.0

St. Georges (5332)²

		vote	share
Massey B.	Con	1,104	55.6
Larratt P.	Con	1,100	-
Buckle H. Ms.	Lab	479	24.1
Spooner J. Ms.	Lab	459	-
Keevil P.	Lib/SDP	401	20.2
Lovesey D.	Lib/SDP	371	-
Turnout		37.2	31.5

Thorplands (4421)²

		vote	share
Conway S.	Lab	770	53.0
Patterson L.	Lab	707	-
Kitley A.	Con	682	47.0
Turnout		32.8	6.1

Welford (5687)²

		vote	share
Liddington R.	Con	1,426	55.6
Liddington M. Ms.	Con	1,401	-
Meade A. Ms.	Lib/SDP	595	23.2
Grant K.	Lib/SDP	592	-
Meredith D.	Lab	546	21.3
Warr D.	Lab	512	-
Turnout		45.1	32.4

Weston (7462)²

		vote	share
Stimpson A.	Con	2,291	65.8
Brazier D.	Con	2,241	-
Deasy T.	Lab	655	18.8
Abbott I. Ms.	Lab	629	-
Hughes D. Ms.	Lib/SDP	537	15.4
Turnout		46.7	47.0

Northampton - 1987

Abington (5355)²

		vote	share
James S.	Con	1,023	38.9
Raca J.	Con	964	-
Oakman V.	Lib/SDP	829	31.5
Lovesy H. Ms.	Lib/SDP	821	-
Dixon J.	Lab	676	25.7
Gowen D.	Lab	561	-
Green M.	Green	100	3.8

Turnout 49.1 7.4

Billing (6661)²

		vote	share
Linnett R.	Con	1,345	52.9
Morgan C.	Con	1,293	-
Newcombe S.	Lab	634	24.9
Robinson D.	Lab	612	-
Hughes D.	Lib/SDP	565	22.2
Woodgett B.	Lib/SDP	502	-

Turnout 38.2 27.9

Boughton Green (4890)²

		vote	share
Goodman D.	Con	929	39.4
Goodman M. Ms.	Con	871	-
Bryan I.	Lib/SDP	772	32.7
Duijsters J.	Lib/SDP	760	-
Borland M.	Lab	659	27.9
McCutcheon A.	Lab	643	-

Turnout 48.3 6.7

Castle (6090)²

		vote	share
Dickie J.	Lab	1,423	66.6
Howes G.	Lab	1,303	-
Prout J.	Con	554	25.9
Tavener R.	Con	528	-
Watson V. Ms.	Green	161	7.5

Turnout 35.1 40.6

Dallington & Kings Heath (7985)³

		vote	share
Gardner J.	Lab	1,561	55.6
Conway S.	Lab	1,455	-
Bains J.	Lab	1,311	-
Carter P.	Con	843	30.0
Elms R.	Con	823	-
Burrow F.	Con	810	-
Foster G.	Lib/SDP	404	14.4
Markham I. Ms.	Lib/SDP	361	-

Turnout 35.2 25.6

Delapre (5563)²

		vote	share
Ball D.*	Lab	879	40.5
Gravesande U.	Lab	804	-
Bishop I.	Con	757	34.9
Lill C.	Con	739	-
Lamin D.	Lib/SDP	535	24.6
Earp E.	Lib/SDP	511	-

Turnout 39.0 5.6

Headlands (5088)²

		vote	share
Hargrave A.	Con	1,223	51.3
Gooding G.	Con	1,181	-
Cox D.	Lab	572	24.0
Young M.	Lab	462	-
Lovesy D.	Lib/SDP	413	17.3
Squires C.	Lib/SDP	350	-
Billingham K. Ms.	Green	174	7.3

Turnout 46.8 27.3

Kingsthorpe (5148)²

		vote	share
Church R.	Lib/SDP	1,114	45.5
Wallace S.	Lib/SDP	958	-
Forster C.	Con	688	28.1
Percival J.	Con	677	-
Corrie B.	Lab	644	26.3
Meredith D.	Lab	502	-

Turnout 47.5 17.4

Links (6388)²

		vote	share
Lindsell R.	Lab	1,149	46.5
Tero F.	Lab	1,054	-
Green M.	Con	823	33.3
Freeman S. Ms.	Con	815	-
Dee B.	Lib/SDP	500	20.2
Corr J.	Lib/SDP	455	-

Turnout 38.7 13.2

Lumbertubs (6164)²

		vote	share
Ferrier C. Ms.	Con	857	39.9
Bailey T.	Lab	838	39.0
Usmar D.	Con	779	-
Rawlings J.	Lab	761	-
Foot C. Ms.	Lib/SDP	369	17.2
Baldwin V. Ms.	Lib/SDP	357	-
Bacchus C.	Green	84	3.9

Turnout 34.8 0.9

Nene Valley (10056)²

		vote	share
Lloyd M.	Con	2,363	46.8
Morris J. Ms.	Con	2,267	-
Allen M. Ms.	Lib/SDP	1,351	26.8
Toseland G.	Lib/SDP	1,259	-
O'Leary M.	Lab	1,143	22.6
Peacock K.	Lab	1,072	-
Lander E. Ms.	Green	190	3.8

Turnout 50.2 20.1

New Duston (6629)²

		vote	share
Dowdy P.	Con	1,611	52.1
Walden R. Ms.	Con	1,561	-
Bridle E. Ms.	Lab	1,057	34.2
Turner T.	Lab	953	-
Long D.	Lib/SDP	422	13.7

Turnout 46.6 17.9

Old Duston (5607)²

		vote	share
Edwards D.	Con	1,569	55.2
Briggs K.	Con	1,477	-
Angier T.	Lib/SDP	647	22.8
Angier D. Ms.	Lib/SDP	646	-
Abbott I. Ms.	Lab	625	22.0
Perry B.	Lab	548	-

Turnout 50.7 32.5

Park (7320)²

		vote	share
Benton C.	Con	1,765	50.8
Browne D.	Con	1,738	-
Fox A.	Lib/SDP	1,001	28.8
Harrison C.	Lib/SDP	865	-
Deasy A.	Lab	566	16.3
Geraghty P.	Lab	536	-
Brayne E. Ms.	Green	143	4.1

Turnout 47.5 22.0

South (5307)²

		vote	share
Cumberpatch R. Ms.	Con	1,038	44.6
Evans F.	Con	1,034	-
Cuff B.	Lab	653	28.1
Witt P.	Lab	622	-
Scaife P. Ms.	Lib/SDP	499	21.4
Scaife P.	Lib/SDP	467	21.4
Meikle J. Ms.	Green	137	5.9

Turnout 43.8 16.5

St. Albans (4862)²

		vote	share
Biley H.	Lab	933	42.2
Johnson R.	Lab	892	-
Baker P.	Con	673	30.4
Markie I.	Lib/SDP	605	27.4
Levins D.	Con	603	-
Choo Yin J.	Lib/SDP	497	-

Turnout 45.5 11.8

St. Crispin (4743)²

		vote	share
Howes A. Ms.	Lab	768	41.3
Walker G.	Lab	724	-
Clarke N.	Con	666	35.8
Mannan M.	Con	541	-
Hinds S. Ms.	Lib/SDP	241	13.0
Newton B. Ms.	Green	186	10.0

Turnout 39.2 5.5

St. Georges (5287)²

		vote	share
Larratt P.	Con	1,172	43.8
Massey W.	Con	1,165	-
Druker B.	Lab	964	36.0
Hamilton H.	Lab	854	-
Hill S. Ms.	Lib/SDP	466	17.4
Baldwin R.	Lib/SDP	449	-
Shilson R.	Green	76	2.8

Turnout 50.7 7.8

Thorplands (5532)²

		vote	share
Patterson L.	Lab	821	40.1
Craig I.	Lab	812	-
Marr D.	Con	721	35.2
Kitley A.	Con	721	-
Moring J. Ms.	Lib/SDP	350	17.1
Hamilton M. Ms.	Green	155	7.6

Turnout 37.0 4.9

Welford (6144)²

		vote	share
Liddington R.	Con	1,373	54.1
Percival L. Ms.	Con	1,157	-
Kirby B.	Lab	587	23.1
Allenby J.	Lib/SDP	576	22.7
Bigley J.	Lab	573	-
Meade B. Ms.	Lib/SDP	520	-

Turnout 41.3 31.0

Weston (8403)²

		vote	share
Halliwell P. Ms.	Con	2,055	59.3
Stimpson A.	Con	2,037	-
Hughes D. Ms.	Lib/SDP	824	23.8
McLeavy P.	Lib/SDP	807	-
Hughes R.	Lab	586	16.9
Richards C.	Lab	504	-

Turnout 41.2 35.5

Northampton - 1991

Abington (5449)²

		vote	share
Dams V. Ms.	Lab	965	34.6
McCutcheon A.	Lab	954	-
Markham C.	LD	895	32.1
Topham P.	LD	816	-
James S.	Con	814	29.2
Raca J.	Con	773	-
Whitfield M.	Green	111	4.0

Turnout 48.9 2.5

Billing (5406)²

		vote	share
Sargeant R. Ms.	Con	1,323	58.5
Morgan C.*	Con	1,266	-
Robinson D.	Lab	937	41.5
Deasy A.	Lab	931	-

Turnout 41.1 17.1

Boughton Green (4945)²			
	vote	share	
Hanly M.	LD	1,118	48.8
Squires C.	LD	1,106	-
Goodman D.*	Con	592	25.8
Gowen D.	Lab	581	25.4
Tinston M.	Lab	561	-
Goodman M. Ms.*	Con	556	-
	Turnout	45.6	23.0
Castle (5903)²			
	vote	share	
Dickie J.*	Lab	1,624	76.6
Howes G.*	Lab	1,471	-
Steele A.	Con	497	23.4
Tavener R.	Con	440	-
	Turnout	34.2	53.1
Dallington & Kings Heath (7993)³			
	vote	share	
Gardner J.*	Lab	1,918	71.2
Dyer-Atkin M. Ms.	Lab	1,810	-
Bains J.*	Lab	1,803	-
Austin G.	Con	774	28.8
Elmes R.	Con	771	-
Mackley R.	Con	697	-
	Turnout	48.6	42.5
Delapre (5423)²			
	vote	share	
O'Leary M.	Lab	1,302	63.0
Gravesande U.*	Lab	1,282	-
Bishop I.	Con	765	37.0
Freeman S. Ms.	Con	754	-
	Turnout	37.8	26.0
Headlands (4976)²			
	vote	share	
Gooding G.*	Con	1,275	57.1
Hargrave A.*	Con	1,251	-
Ferrison K.	Lab	957	42.9
O'Hora J.	Lab	798	-
	Turnout	43.0	14.2
Kingsthorpe (4946)²			
	vote	share	
Church R.*	LD	1,228	51.3
Morris R.	LD	1,139	-
Kirby B.	Lab	658	27.5
Stephenson B.	Lab	593	-
Baker R.	Con	506	21.2
Baker P.	Con	480	-
	Turnout	46.5	23.8
Links (6191)²			
	vote	share	
Lindsell R.	Lab	1,400	52.4
Tero F.	Lab	1,247	-
Ward H.	Con	797	29.8
Sargeant B.	Con	772	-
Baldwin R.	LD	477	17.8
Newbury A.	LD	474	-
	Turnout	41.8	22.6
Lumbertubs (9468)²			
	vote	share	
Bailey T.*	Lab	1,609	48.3
Howes A. Ms.	Lab	1,595	-
Bolam B.	Con	1,407	42.2
Ferrier C. Ms.*	Con	1,396	-
Bacchus C.	Green	317	9.5
	Turnout	33.4	6.1
Nene Valley (14774)²			
	vote	share	
Lloyd M.*	Con	3,379	58.8
Morris J. Ms.*	Con	3,254	-
Geraghty P.	Lab	1,675	29.1
Dams G.	Lab	1,526	-
Lander E. Ms.	Green	694	12.1
	Turnout	35.7	29.6

New Duston (7619)²			
	vote	share	
Carter P.	Con	1,726	52.9
Walden R. Ms.*	Con	1,711	-
Abbott I. Ms.	Lab	1,535	47.1
Turner T.	Lab	1,412	-
	Turnout	41.9	5.9
Old Duston (5663)²			
	vote	share	
Edwards D.*	Con	1,490	51.0
Briggs K.*	Con	1,486	-
Bruley L.	Lab	939	32.2
Dyer-Atkins A.	Lab	817	-
Duijsters J.	LD	491	16.8
	Turnout	46.1	18.9
Park (7414)²			
	vote	share	
Benton C.*	Con	1,721	53.9
Browne D.*	Con	1,679	-
Heaney M. Ms.	Lab	1,147	35.9
Blackman H. Ms.	Lab	1,099	-
Lochmuller A.	Green	323	10.1
	Turnout	40.3	18.0
South (5125)²			
	vote	share	
Cumberpatch R. Ms.*	Con	1,041	43.8
Clarke A.	Lab	997	41.9
Evans F.*	Con	986	-
Dixon J.	Lab	955	-
Oakman C.	LD	341	14.3
	Turnout	42.2	1.8
St. Albans (4818)²			
	vote	share	
Alder R.	Lab	1,231	58.6
Johnson R.*	Lab	1,150	-
Clowes J. Ms.	Con	589	28.0
Gardener I.	Con	573	-
Oakman V.	LD	280	13.3
Oakman P.	LD	261	-
	Turnout	42.4	30.6
St. Crispin (4771)²			
	vote	share	
Waters D.	Lab	977	51.4
Ferrison B. Ms.	Lab	934	-
Wilkinson D. Ms.	LD	396	20.8
Addison J.	Con	379	19.9
MacLeod A. Ms.	Con	353	-
McCall-Judson A.	LD	249	-
Barnes R.	Green	149	7.8
	Turnout	36.0	30.6
St. Georges (5138)²			
	vote	share	
Larratt P.*	Con	1,027	36.4
Druker B.	Lab	1,009	35.7
Massey W.*	Con	994	-
Marks S.	Lab	938	-
Cramp J.	LD	788	27.9
Simpson A.	LD	701	-
	Turnout	53.1	0.6
Thorplands (5833)²			
	vote	share	
Craig I.*	Lab	1,103	53.3
Patterson L.*	Lab	1,100	-
Thurlow R.	Con	689	33.3
Stamp M. Ms.	Con	688	-
Hamilton M. Ms.	Green	276	13.3
	Turnout	33.1	20.0
Welford (6221)²			
	vote	share	
Percival L. Ms.*	Con	1,195	44.1
Lloyd M.	Con	1,189	-
Kirby J. Ms.	Lab	1,013	37.4
Smith P. Ms.	Lab	919	-
Sharpe J.	LD	500	18.5
Bryan I.	LD	445	-
	Turnout	42.3	6.7

Weston (7298)²			
	vote	share	
Hadland T.	Con	1,919	55.9
Raca A.	Con	1,812	-
Boss D. Ms.	Lab	930	27.1
Scott A.	Lab	772	-
Woodgett B.	LD	585	17.0
	Turnout	41.3	28.8
Northampton - 1995			
Abington (5578)²			
	vote	share	
McCutcheon A.*	Lab	1,175	53.8
Dams V. Ms.*	Lab	1,154	-
Rounthwaite A.	LD	760	34.8
Hendy S. Ms.	LD	747	-
Murray P.	Con	251	11.5
Lomas N.	Con	228	-
	Turnout	40.7	19.0
Billing (5914)²			
	vote	share	
Dunstall S. Ms.	Lab	1,093	52.0
Davies I.	Lab	1,019	-
Morgan C.*	Con	652	31.0
Watkins A. Ms.	Con	574	-
Bove A.	Ind	355	16.9
	Turnout	34.5	21.0
Boughton Green (4849)²			
	vote	share	
Foot R. Ms.	LD	993	52.9
Wright I.	LD	888	-
Walker P.	Lab	679	36.2
Gear F.	Lab	611	-
Bush L.	Con	204	10.9
Lane D. Ms.	Con	192	-
	Turnout	38.3	16.7
Castle (5771)²			
	vote	share	
Dickie J.*	Lab	1,387	77.3
Howes G.*	Lab	1,231	-
Baldwin P. Ms.	LD	208	11.6
Carter C. Ms.	Con	199	11.1
Baldwin R.	LD	193	-
Cumberpatch K.	Con	190	-
	Turnout	32.1	65.7
Dallington & Kings Heath (7891)³			
	vote	share	
Gardner J.*	Lab	1,632	71.3
Bains J.*	Lab	1,590	-
Dyer-Atkins M. Ms.*	Lab	1,555	-
Freeman S. Ms.	Con	370	16.2
Austin G.	Con	330	-
Lane J.	Con	300	-
Allenby J.	LD	286	12.5
Kent N.	LD	212	-
	Turnout	30.8	55.2
Delapre (5153)²			
	vote	share	
Kalyan C.	Lab	1,320	80.4
Gravesande U.*	Lab	1,193	-
Riches I.	Con	321	19.6
Bazeley J.	Con	314	-
	Turnout	33.7	60.9
Headlands (4759)²			
	vote	share	
Markham C.*	LD	1,087	42.9
Greye W.	LD	988	-
Bailey T.	Lab	894	35.3
Canham A.	Lab	821	-
Bowman K.	Con	553	21.8
Cumberpatch R. Ms.	Con	542	-
	Turnout	54.1	7.6

Kingsthorpe (4986) ²		
	vote	share
Beardsworth S. Ms.*	LD	981 52.1
Church R.*	LD	938 -
Kirby J. Ms.	Lab	666 35.4
Blackman H. Ms.	Lab	665 -
Baker R.	Con	236 12.5
Robinson J.	Con	199 -
Turnout	39.3	16.7

Links (6116) ²		
	vote	share
Linsdell R.*	Lab	1,599 72.5
Perry R.	Lab	1,509 -
Cartwright J.	Con	328 14.9
Massey W.	Con	323 -
Cramp J.	LD	277 12.6
Good K.	LD	267 -
Turnout	34.0	57.7

Lumbertubs (9325) ²		
	vote	share
Boss D. Ms.	Lab	1,689 65.5
Mason L. Ms.	Lab	1,611 -
Cottam T.	Con	575 22.3
Sargeant B.	Con	547 -
Moran F. Ms.	LD	313 12.1
Thornborow P.	LD	263 -
Turnout	28.1	43.2

Nene Valley (16192) ²		
	vote	share
Green D.	Lab	2,074 42.2
Boss M.	Lab	1,890 -
Lloyd M.*	Con	1,814 36.9
Morris J. Ms.*	Con	1,746 -
Matthews R.	LD	751 15.3
Squires C.	LD	662 -
Lander E. Ms.	Green	273 5.6
Turnout	28.0	5.3

New Duston (8661) ²		
	vote	share
Wire T.	Lab	2,301 64.9
Robinson D.	Lab	2,114 -
Carter P.*	Con	1,242 35.1
Larratt P.	Con	1,095 -
Turnout	41.0	29.9

Old Duston (5521) ²		
	vote	share
Abbott I. Ms.	Lab	1,249 49.0
Kingston A.	Lab	1,132 -
Edwards D.*	Con	959 37.6
Briggs K.*	Con	850 -
Barker Devonport S.	Green	340 13.3
Turnout	42.3	11.4

Park (7308) ²		
	vote	share
Marks S.	Lab	1,622 53.3
Dyer-Atkins A.	Lab	1,604 -
Ellis M.	Con	967 31.8
James N.	Con	922 -
Markham I. Ms.	LD	371 12.2
McCall-Judson A.	LD	334 -
Lochmuller A.	Green	85 2.8
Turnout	42.0	21.5

South (5093) ²		
	vote	share
Clarke A.*	Lab	1,254 62.5
Coventon W.	Lab	1,182 -
Browne D.	Con	539 26.9
Lundie A.	Con	500 -
Oakman C.	LD	214 10.7
Burgess S.	LD	202 -
Turnout	50.2	35.6

St. Albans (4637) ²		
	vote	share
Thomas M.	Lab	1,218 75.7
Alder R.*	Lab	1,214 -
Clowes J. Ms.	Con	259 16.1
Lever S.	Con	242 -
Topham P.	LD	133 8.3
Sharman J.	LD	131 -
Turnout	35.9	59.6

St. Crispin (4741) ²		
	vote	share
Deasy A.*	Lab	1,170 69.4
Reid G. Ms.	Lab	1,112 -
Campbell D.	LD	354 21.0
Taylor M. Ms.	LD	316 -
Holloway M. Ms.	Con	161 9.6
Turnout	35.8	48.4

St. Georges (5132) ²		
	vote	share
Atkins R.	LD	1,091 45.8
Simpson A.	LD	1,045 -
Gowen D.	Lab	946 39.7
Mitchell A. Ms.	Lab	903 -
Eldred B.	Con	344 14.4
Grooms S. Ms.	Con	336 -
Turnout	47.7	6.1

Thorplands (5617) ²		
	vote	share
Patterson L.*	Lab	1,161 76.6
Duxbury A.	Lab	1,159 -
Kitley A.	Con	202 13.3
Thurlow C. Ms.	Con	196 -
Rush S. Ms.	LD	93 -
Lovesy D.	LD	93 6.1
Wilkinson S.	Green	60 4.0
Turnout	28.8	63.3

Welford (6135) ²		
	vote	share
Kirby B.	Lab	1,406 59.7
Marriott L.	Lab	1,280 -
Percival L. Ms.*	Con	566 24.0
Lloyd M.*	Con	555 -
Foster G.	LD	384 16.3
Teulon C. Ms.	LD	303 -
Turnout	38.4	35.7

Weston (7673) ²		
	vote	share
Hadland T.*	Con	1,129 43.2
Lineker J. Ms.	Lab	1,087 41.6
Lyon N.	Con	1,075 -
Hancock M.	Lab	1,069 -
Grose E. Ms.	LD	399 15.3
Oakman V.	LD	311 -
Turnout	34.9	1.6

Northampton - 1999

Abington (6616) ²		
	vote	share
McCutcheon A.*	Lab	884 50.4
Dams V. Ms.*	Lab	870 -
Mackley R.	Con	492 28.1
Cumberpatch K.	Con	492 -
Markham I. Ms.	LD	322 18.4
Oakman P.	LD	255 -
Torbica D.	Ind	56 3.2
Turnout	26.6	22.3

Billing (6201) ²		
	vote	share
Davies M. Ms.	Lab	678 43.4
Pritchard M. Ms.	Lab	652 -
Duncan J. Ms.	Con	610 39.1
Hill M. Ms.	Con	588 -
Brennan T. Ms.	LD	273 17.5
Teulon C. Ms.	LD	218 -
Turnout	25.3	4.4

Boughton Green (8710) ³		
	vote	share
Baldwin R.	LD	1,252 52.4
Yates J.	LD	1,232 -
Felstead N. Ms.	LD	1,218 -
Kirby B.	Lab	766 32.1
O' Ceallaigh N.	Lab	672 -
Witt P.	Lab	664 -
Percival L. Ms.	Con	370 15.5
Cartwright J.	Con	362 -
Beal A.	Con	349 -
Turnout	33.1	20.4

Castle (6955) ²		
	vote	share
Barron L.	Lab	1,050 56.6
Dickle T.*	Lab	1,019 -
Tebbutt A.	Con	285 15.4
Burgess S.	LD	276 14.9
Butler R.	Ind	243 13.1
Cox J.	LD	227 -
Turnout	24.7	41.3

Delapre (5741) ²		
	vote	share
Kalyan C.*	Lab	897 55.0
Gravesande U.*	Lab	792 -
Glynane B.	Ind	733 45.0
Kirkland D. Ms.	Ind	689 -
Turnout	28.7	10.1

East Hunsbury (6409) ²		
	vote	share
Lill J. Ms.	Con	794 54.5
Larratt P.	Con	759 -
Cuff B.	Lab	424 29.1
Dibosa V.	Lab	407 -
Hooper M.	LD	239 16.4
Panebianco J. Ms.	LD	214 -
Turnout	23.1	25.4

Eastfield (6748) ²		
	vote	share
Thomas M.*	Lab	1,122 56.5
Rawlings J.*	Lab	1,056 -
Merkitt K.	Con	536 27.0
McDermott J.	Con	498 -
Dee B.	LD	328 16.5
Thornborow P.	LD	251 -
Turnout	30.4	29.5

Ecton Brook (5301) ²		
	vote	share
Davies I.*	Lab	586 48.2
Boss D. Ms.*	Lab	559 -
Dearsley B.	Con	421 34.6
Hawker G.	Con	418 -
Felstead L.	LD	210 17.3
Baldwin P. Ms.	LD	182 -
Turnout	23.3	13.6

Headlands (6428) ²		
	vote	share
Markham C.*	LD	1,108 42.1
Allen M. Ms.*	LD	1,094 -
Cumberpatch R. Ms.	Con	775 29.4
Hart T.	Lab	751 28.5
Lane J.	Con	719 -
Persaud D.	Lab	657 -
Turnout	41.6	12.6

Kingsley (7160) ²		
	vote	share
Simpson A.*	LD	1,133 48.1
Taylor M. Ms.	LD	1,093 -
Mitchell A. Ms.	Lab	857 36.4
Roy A. Ms.	Lab	835 -
Axtell L. Ms.	Con	312 13.2
Eldred B. Ms.	Con	305 -
Papworth M.	Ind	53 2.3
Turnout	33.3	11.7

Kingsthorpe (5893)²			
		vote	share
Beardsworth S. Ms.*	LD	1,162	57.6
Church R.*	LD	1,090	-
Kirby J. Ms.	Lab	488	24.2
Blackman H. Ms.	Lab	436	-
Eldred B.	Con	368	18.2
Wright B.	Con	332	-
		Turnout	34.5 33.4
Lumbertubs (6108)²			
		vote	share
Mason L. Ms.*	Lab	755	60.6
Bailey T.*	Lab	731	-
Thurlow C. Ms.	Con	313	25.1
Sarchet J.	Con	297	-
Sumeray L.	LD	177	14.2
		Turnout	20.3 35.5
Nene Valley (5710)²			
		vote	share
Lill C.	Con	1,006	53.1
Hill M.	Con	981	-
Jones M.	Lab	616	32.5
Roberts A.	Lab	520	-
Marsh T. Ms.	LD	273	14.4
Squires C.	LD	179	-
		Turnout	35.4 20.6
New Duston (6559)²			
		vote	share
Lilley F.	Lab	974	45.8
Stewart S.	Con	878	41.3
O' Hora D. Ms.	Lab	812	-
Nunn J.	Con	787	-
Cant R.	LD	276	13.0
Tilly M.	LD	164	-
		Turnout	31.2 4.5
Old Duston (6552)²			
		vote	share
Ford P. Ms.	Lab	1,138	48.6
Kingston A.*	Lab	1,090	-
Edwards D.	Con	962	41.1
Howard B.	Con	895	-
Lewis G.	LD	242	10.3
Battison S. Ms.	LD	210	-
		Turnout	34.6 7.5
Parklands (6265)²			
		vote	share
Massey W.	Con	908	44.1
Dowsett K.	Lab	856	41.6
McCann I.	Con	831	-
Choudary I.	Lab	766	-
Swain P. Ms.	LD	296	14.4
Rees H.	LD	292	-
		Turnout	33.4 2.5
Spencer (5994)²			
		vote	share
Bains J.*	Lab	850	66.4
Gardner J.*	Lab	845	-
Malpas C.	Con	252	19.7
Beardsworth M.	LD	179	14.0
Allenby J.	LD	178	-
		Turnout	21.7 46.7
St. Crispin (6206)²			
		vote	share
Riley A.*	Lab	848	57.9
Strachan W.	Lab	777	-
Andreoli A.	Con	328	22.4
Harvey T. Ms.	LD	288	19.7
Starling N.	LD	239	-
		Turnout	22.3 35.5

St. David (5684)²			
		vote	share
Foot R. Ms.*	Lab	504	41.7
Perry R.*	Lab	490	-
O' Hare S.	LD	316	26.1
Wright I.	LD	304	-
Bradshaw M.	Ind	202	16.7
Baker C.	Con	188	15.5
Wright A. Ms.	Con	156	-
		Turnout	20.5 15.5

St. James (6297)²			
		vote	share
Marriott L.*	Lab	916	57.5
Wire T.*	Lab	894	-
Smith J.	Ind	676	42.5
		Turnout	25.9 15.1

Thorplands (5669)²			
		vote	share
Patterson L.*	Lab	731	67.8
Boss M.*	Lab	661	-
Kent N.	LD	347	32.2
Oakman R.	LD	321	-
		Turnout	20.2 35.6

West Hunsbury (5210)²			
		vote	share
Matthews R.	LD	632	42.8
Hope J. Ms.	LD	616	-
Hugheston-Roberts C.	Con	510	34.5
Morgan C.	Con	481	-
Thubron M. Ms.	Lab	275	18.6
Dyer-Atkins A.*	Lab	274	-
Clark D.	Ind	61	4.1
		Turnout	28.8 8.3

Weston (6867)²			
		vote	share
Hadland T.*	Con	1,402	56.7
Kennedy H. Ms.	Con	1,383	-
Lineker J. Ms.*	Lab	752	30.4
Bhatti M.	Lab	645	-
Cramp J.	LD	320	12.9
Grose E. Ms.	LD	280	-
		Turnout	36.4 26.3

Northampton - 2003

Abington (6445)²			
		vote	share
Markham I. Ms.	LD	986	49.1
Hoare B.	LD	893	-
Owen T.	Lab	578	28.8
Dams V. Ms.*	Lab	573	-
Ashby J. Ms.	Con	446	22.2
Stoker B.	Con	414	-
		Turnout	31.6 20.3

Billing (6202)²			
		vote	share
Palethorpe D.	Con	832	48.5
Malpas C.	Con	786	-
Lineker J. Ms.	Lab	601	35.0
Bailey T.*	Lab	558	-
Felstead N. Ms.*	LD	283	16.5
Baldwin R.*	LD	275	-
		Turnout	28.2 13.5

Boughton Green (8387)³			
		vote	share
Yates J.*	LD	1,647	57.2
Perkins D.	LD	1,579	-
Crake M. Ms.	LD	1,533	-
Beal A.	Con	700	24.3
Rolfe J. Ms.	Con	663	-
Rolfe P.	Con	643	-
Mason G.	Lab	533	18.5
Whitford A.	Lab	513	-
Wire F. Ms.	Lab	448	-
		Turnout	34.2 32.9

Castle (7078)²			
		vote	share
Barron L.*	Lab	626	41.1
Evans P.	Lab	584	-
Barham E.	Con	474	31.1
Butler R.	Con	452	-
Coles L. Ms.	LD	422	27.7
Walsh G.	LD	385	-
		Turnout	22.4 10.0

Delapre (6372)²			
		vote	share
Glyname B.	LD	1,145	55.0
Hoare M. Ms.	LD	1,031	-
Kalyan C.*	Lab	505	24.3
Gravesande U.*	Lab	494	-
Joyner T.	Con	431	20.7
Lobban M.	Con	398	-
		Turnout	32.8 30.8

East Hunsbury (6524)²			
		vote	share
Lill J. Ms.*	Con	1,149	65.9
Larratt P.*	Con	967	-
Panebianco J. Ms.	LD	321	18.4
Squires C.	LD	307	-
Peach A.	Lab	274	15.7
Thom D.	Lab	229	-
		Turnout	25.2 47.5

Eastfield (6639)²			
		vote	share
Acock D.	Con	684	32.0
Robinson J.	Con	625	-
Boss D. Ms.*	Lab	580	27.2
Gear F.	Lab	543	-
Dee B.	LD	472	22.1
Cheyne A.	LD	405	-
Jacobs B.	Ind	258	12.1
Lochmuller J. Ms.	Green	142	6.6
		Turnout	30.0 4.9

Ecton Brook (5362)²			
		vote	share
Lane J.	Con	647	48.0
Miah M.	Con	575	-
Davies I.*	Lab	400	29.7
Davies M. Ms.*	Lab	395	-
Felstead L.	LD	302	22.4
Alderton K.	LD	274	-
		Turnout	25.1 18.3

Headlands (6440)²			
		vote	share
Markham C.*	LD	1,425	54.8
Allen-Minney M. Ms.	LD	1,389	-
Hawker G.	Con	731	28.1
West P.	Con	686	-
Dixon P. Ms.	Lab	442	17.0
Hart T.	Lab	414	-
		Turnout	40.8 26.7

Kingsley (7094)²			
		vote	share
Taylor M. Ms.*	LD	1,356	54.5
Simpson A.*	LD	1,340	-
Hilliard D.	Lab	498	20.0
Mitchell A. Ms.	Lab	446	-
Austin G.	Con	441	-
Booker R.	Con	441	17.7
Upton A.	Green	194	7.8
		Turnout	34.1 34.5

Kingsthorpe (5797)²			
		vote	share
Beardsworth S. Ms.*	LD	1,523	71.8
Church R.*	LD	1,444	-
Percival L. Ms.	Con	367	17.3
Tebbutt A.	Con	333	-
Smith P. Ms.	Lab	232	10.9
Dobraszczyk T.	Lab	226	-
		Turnout	37.0 54.5

Lumbertubs (6048) ²			
		vote	share
Mason L. Ms.*	Lab	524	43.4
Pritchard M. Ms.*	Lab	523	-
Browne D.	Con	388	32.2
Douglas B. Ms.	Con	379	-
Lovesy D.	LD	294	24.4
Oakman P.	LD	266	-

Turnout 21.2 11.3

Nene Valley (7228) ²			
		vote	share
Hill M.*	Con	1,397	56.6
Lill C.*	Con	1,394	-
Jones M.	Lab	495	20.1
Sansom R.	Lab	438	-
Nobles M.	LD	396	16.0
Battison S. Ms.	LD	383	-
Lander E. Ms.	Green	180	7.3

Turnout 33.3 36.5

New Duston (6469) ²			
		vote	share
Caswell J.	Con	1,178	46.6
Stewart S.*	Con	1,163	-
Jelley J.	Lab	695	27.5
Lilley F.*	Lab	583	-
Huffadine-Smith D.	Ind	386	15.3
Swain P. Ms.	LD	267	10.6
Taylor M.*	LD	214	-

Turnout 36.2 19.1

Old Duston (6325) ²			
		vote	share
Tavener E. Ms.	Con	1,300	55.3
Edwards D.	Con	1,282	-
Ford P. Ms.*	Lab	714	30.4
Kingston A.*	Lab	700	-
Lewis G.	LD	336	14.3
Garforth D.	LD	328	-

Turnout 38.5 24.9

Parklands (6104) ²			
		vote	share
Massey W.*	Con	1,187	50.1
Eldred B.	Con	1,110	-
Dowsett K.*	Lab	622	26.2
Choudary I.	Lab	528	-
Beardsworth M.	LD	420	17.7
Edwards S. Ms.	LD	393	-
Lochmuller A.	Green	141	5.9

Turnout 38.5 23.8

Spencer (6143) ²			
		vote	share
Concannon P.	Lab	628	43.5
Roy A.	Lab	567	-
Kelly C.	Con	448	31.0
Jones P.	Con	415	-
Crick S.	LD	369	25.5
Abu K. Ms.	LD	319	-

Turnout 23.2 12.5

St. Crispin (6641) ²			
		vote	share
McCutcheon A.*	Lab	506	32.7
Flavell P. Ms.	Con	492	31.8
Dorey L.	Con	485	-
Strachan W.*	Lab	457	-
Bowden H.	LD	288	18.6
Ellis R.	LD	270	-
Alexander C. Ms.	Green	207	13.4
Harvey T. Ms.	Ind	54	3.5

Turnout 21.8 0.9

St. David (5524) ²			
		vote	share
Hollis J. Ms.	LD	585	41.5
Woods A.	LD	522	-
Gardner J.*	Lab	442	31.4
Keown N. Ms.	Lab	395	-
Cartwright J.	Con	166	11.8
Cartwright J.	Con	163	11.8
Perry R.*	Ind	146	10.4
Robinson P.	Ind	112	-
Papworth M.	UK Ind	70	5.0

Turnout 24.1 10.1

St. James (6437) ²			
		vote	share
Marriott L.*	Lab	686	38.3
Wire T.*	Lab	670	-
McCann I.	Con	668	37.3
Wright A. Ms.	Con	590	-
Vaughan I.	LD	438	24.4
Wayman C. Ms.	LD	414	-

Turnout 28.5 1.0

Thorplands (5625) ²			
		vote	share
Patterson L.*	Lab	454	45.5
Boss M.*	Lab	444	-
Hill M. Ms.*	Con	286	28.7
Nunn J.	Con	265	-
Down E. Ms.	LD	257	25.8
Lamb G.	LD	254	-

Turnout 20.6 16.9

West Hunsbury (5562) ²			
		vote	share
Hope J. Ms.*	LD	1,225	59.7
Matthews R.*	LD	1,182	-
Sellers R.	Con	604	29.4
Dearsley B.	Con	595	-
Chowdhury G.	Lab	150	7.3
Draper S.	Lab	124	-
Clark D.	UK Ind	73	3.6

Turnout 37.9 30.3

Weston (6932) ²			
		vote	share
Hadland T.*	Con	1,660	63.8
Duncan J. Ms.	Con	1,612	-
Garlick D.	LD	548	21.1
Cramp J.	LD	494	-
Pike C. Ms.	Lab	393	15.1
Deasy A.	Lab	360	-

Turnout 38.5 42.8

Northampton - 2007

Abington (6037) ²			
		vote	share
Markham I. Ms.*	LD	949	48.9
Hoare B.*	LD	929	-
O'Connor S.	Lab	413	21.3
Owen T.	Lab	372	-
Kelly R. Ms.	Con	364	18.8
Sargeant B.	Con	318	-
Higgs J.	Green	213	11.0
Rock M.	Green	183	-

Turnout 32.2 27.6

Billing (6203) ²			
		vote	share
Palethorpe D.*	Con	941	41.3
Malpas C.*	Con	855	-
Bailey T.	Lab	511	22.4
Mehta D.	Lab	397	-
Walker R.	BNP	309	13.5
Phillips G.	LD	280	12.3
Efosa J.	LD	245	-
Clements R.	Ind	240	10.5

Turnout 33.5 18.9

Boughton Green (8210) ³			
		vote	share
Yates J.*	LD	1,899	55.2
Crake T. Ms.	LD	1,845	-
Perkins D.*	LD	1,779	-
Emmerson L.	Con	779	22.6
Norman A. Ms.	Con	762	-
Norman L. Ms.	Con	759	-
Phillips J. Ms.	Lab	482	14.0
Hart T.	Lab	459	-
Whitford A.	Lab	429	-
Dale E.	SOS	281	8.2

Turnout 40.5 32.5

Castle (6575) ²			
		vote	share
Clarke T.	Ind	601	31.5
Scott T. Ms.	Lab	447	23.5
Swinn C.	LD	425	22.3
Winder S.	LD	383	-
Evans P.*	Ind	362	-
Hemphill G.	Con	245	12.9
Gasson D.	Con	233	-
Fitzpatrick E.	Ind	210	-
Curtis S. Ms.	Green	187	9.8

Turnout 25.8 8.1

Delapre (6735) ²			
		vote	share
Glyne B.*	LD	591	27.2
Reeve K.	Con	519	23.9
Kalyan C.	Lab	469	21.6
Nunn L.	BNP	388	17.8
Croke S.	Lab	387	-
Rawlings J.	LD	368	-
Sijivic I.	Con	312	-
Fearnley J.	Green	209	9.6

Turnout 32.5 3.3

East Hunsbury (6410) ²			
		vote	share
Lill J. Ms.*	Con	1,087	59.5
Larratt P.*	Con	1,027	-
Collins C.	LD	385	21.1
Burnell R.	Lab	354	19.4
Panebianco J. Ms.	LD	352	-
Fairbrace S. Ms.	Lab	278	-

Turnout 29.6 38.4

Eastfield (6425) ²			
		vote	share
Hawkins J. Ms.	LD	1,170	47.5
Collins S.	LD	1,074	-
Gravesande U.	Lab	556	22.6
Acock D.*	Con	547	22.2
Kirby B.	Lab	513	-
Wright A.	Con	501	-
Lochmuller A.	Green	189	7.7

Turnout 37.1 24.9

Ecton Brook (5276) ²			
		vote	share
Lane J.*	Con	624	38.4
Davies K.	Lab	600	36.9
Miah Y.	Con	533	-
Strachan W.	Lab	483	-
Jones G.	LD	311	19.1
Williams R. Ms.	LD	267	-
Webb S. Ms.	CPA	90	5.5

Turnout 29.7 1.5

Headlands (6295) ²			
		vote	share
Garlick D.	LD	1,513	57.9
Markham B.	LD	1,502	-
Hawker G.	Con	703	26.9
Hutchings L. Ms.	Con	645	-
Turner N. Ms.	Lab	396	15.2
Grethe C.	Lab	356	-

Turnout 42.1 31.0

Kingsley (6917)²			
	vote	share	
Simpson A.*	LD	1,253	54.7
Taylor M. Ms.*	LD	1,184	-
Keown N. Ms.	Lab	439	19.2
Croke J. Ms.	Lab	437	-
Sullivan N.	Con	400	17.5
Austin G.	Con	393	-
Pickup D.	Green	197	8.6
Upton M. Ms.	Green	146	-
Turnout		33.7	35.6

Kingsthorpe (5573)²			
	vote	share	
Beardsworth S. Ms.*	LD	1,601	68.4
Church R.*	LD	1,381	-
Beal A.	Con	318	13.6
Jones E.	Con	274	-
Thomas S.	Lab	216	9.2
Blackman H. Ms.	Lab	215	-
Withrington P.	SOS	206	8.8
Turnout		39.7	54.8

Lumbertubs (5774)²			
	vote	share	
Capstick J. Ms.	Lab	622	34.0
Mason L. Ms.*	Lab	575	-
Bowles G.	LD	430	23.5
Down E. Ms.	LD	427	-
Mackintosh D.	Con	327	17.9
Usmar D.	Con	290	-
Blundell P. Ms.	BNP	256	14.0
Tuttle H.	Save NHS	196	10.7
Turnout		30.2	10.5

Nene Valley (8121)²			
	vote	share	
Hill M.*	Con	1,635	60.0
Lill C.*	Con	1,556	-
Beales D.	Lab	545	20.0
Glyname J. Ms.	LD	543	19.9
Bream B. Ms.	LD	503	-
Turnout		33.0	40.0

New Duston (6425)²			
	vote	share	
Tavener L. Ms.	Con	1,196	43.3
Caswell J.*	Con	977	-
Huffadine-Smith D.	Ind	541	19.6
Bruley L.	Lab	476	17.2
Pike C. Ms.	Lab	432	-
Edkins S. Ms.	SOS	293	10.6
Lindsell E.	LD	226	8.2
Maher M.	LD	172	-
Bricher F. Ms.	CPA	32	1.2
Turnout		35.9	23.7

Old Duston (6134)²			
	vote	share	
Edwards D.*	Con	899	39.0
Hoare M. Ms.	Con	872	-
Green D.	Save NHS	471	20.4
Matthews R.	Lab	419	18.2
Lilley F.	Lab	368	-
Beardsworth M.	LD	264	11.4
Dare K. Ms.	SOS	255	11.0
Taylor M.	LD	208	-
Turnout		35.8	18.5

Parklands (6081)²			
	vote	share	
Mildren M.	LD	1,568	55.1
Wilson P. Ms.	LD	1,548	-
Hallam M.	Con	896	31.5
Eldred B.	Con	867	-
Keown W.	Lab	325	11.4
Morgan G.	Lab	299	-
Bricher C.	CPA	55	1.9
Webb T.	CPA	39	-
Turnout		47.6	23.6

Spencer (5627)²			
	vote	share	
Conroy R.	LD	1,077	56.9
De Cruz M. Ms.	LD	940	-
Roy A.*	Lab	478	25.3
Scott A.	Lab	449	-
Cena A. Ms.	Con	239	12.6
Alti H.	Con	193	-
Harrison J.	SOS	98	5.2
Turnout		33.1	31.7

St. Crispin (6366)²			
	vote	share	
Flavell P. Ms.*	Con	563	33.4
Choudary I.	Lab	540	32.0
McCutcheon A.*	Lab	527	-
Mold S.	Con	462	-
Buchan P.	LD	323	19.1
Gibson H. Ms.	Green	261	15.5
Hawkins J. Ms.	Green	230	-
Jwanczuk D.	LD	224	-
Turnout		26.2	1.4

St. David (5439)²			
	vote	share	
Hollis J. Ms.*	LD	697	50.3
Woods T.	LD	626	-
Russell C. Ms.	Lab	486	35.1
Subbarayan V.	Lab	472	-
Taylor P.	Con	203	14.6
Eldred B.	Con	201	-
Turnout		26.0	15.2

St. James (6633)²			
	vote	share	
Conroy J. Ms.	LD	719	36.1
Varnserry P. Ms.	LD	678	-
Marriott L.*	Lab	636	32.0
McCann I.	Con	634	31.9
Wire F. Ms.	Lab	622	-
Patel S.	Con	595	-
Turnout		31.2	4.2

Thorplands (5424)²			
	vote	share	
Meredith D.	LD	903	48.1
Chaudhury S.	LD	808	-
Patterson L.*	Lab	492	26.2
Boss M.*	Lab	480	-
Avery J.	BNP	252	13.4
Roberts S. Ms.	Con	229	-
Thurlow C. Ms.	Con	229	12.2
Turnout		33.5	21.9

West Hunsbury (6377)²			
	vote	share	
Matthews R.*	LD	1,476	55.9
Varnserry P.	LD	1,287	-
Oldam B.	Con	953	36.1
Golby M.	Con	916	-
Barron J.	Lab	211	8.0
Turnout		41.0	19.8

Weston (6831)²			
	vote	share	
Duncan J. Ms.*	Con	1,528	54.7
Hadland T.*	Con	1,462	-
Barron K.	LD	596	21.3
Christodoulou A.	LD	471	-
Boss D. Ms.	Lab	451	16.1
Porter C.	Lab	336	-
Hornett J.	Green	220	7.9
Turnout		39.4	33.3

Northampton - 2011

Abington (7010)²			
	vote	share	
Ansell A.	Con	939	38.1
Choudary I.*	Lab	752	30.5
Grover W.	Con	681	-
O'Hora D. Ms.	Lab	670	-
Hoare B.*	LD	638	25.9
Markham I. Ms.*	LD	609	-
Higgs J. Ms.	Green	137	5.6
Patzer M.	Green	46	-
Turnout		36.9	7.6

Billing (6291)²			
	vote	share	
Palethorpe D.*	Con	1,284	51.3
Malpas C.*	Con	1,173	-
Bailey T.	Lab	866	34.6
Beales D.	Lab	776	-
Felstead N. Ms.	LD	353	14.1
Khan F. Ms.	LD	208	-
Turnout		40.2	16.7

Boothville (3373)			
	vote	share	
Lane J.*	Con	918	61.1
Wilson P. Ms.*	LD	584	38.9
Turnout		47.0	22.2

Brookside (3719)			
	vote	share	
Mason L. Ms.*	Lab	607	46.3
Fuller M.	LD	287	21.9
Booker R.	Con	261	19.9
McNabb E.	North SOPC	157	12.0
Turnout		35.7	24.4

Castle (9655)³			
	vote	share	
Azizur Rahman M.	Lab	1,068	33.7
Strachan W.	Lab	1,042	-
Stone D. Ms.	Lab	1,023	-
Clarke A.	Ind	741	23.4
Hollis J. Ms.*	LD	464	14.6
Bagnall C.	Con	457	14.4
Hawkins J. Ms.*	Green	443	14.0
Mackenzie A.	Con	428	-
Fearnley R. Ms.	LD	426	-
Glyname J. Ms.	LD	414	-
Walton A. Ms.	Con	391	-
Mildren M.*	Ind	342	-
Turnout		28.8	10.3

Delapre & Briar Hill (10189)³			
	vote	share	
Davies G. Ms.	Lab	969	23.2
Glyname B.*	LD	947	22.7
Ford M.	Con	911	21.8
Reeve K.*	Con	846	-
Rawlings J.	Lab	820	-
Varnserry P. Ms.*	LD	804	-
Varnserry P.*	LD	771	-
Putter J.	Con	744	-
Thurston J.	Lab	740	-
Walker G.	Ind	568	13.6
Plowman M.	BNP	274	6.6
Adams N.	North SOPC	258	6.2
Nunez C. Ms.	Green	250	6.0
Turnout		33.6	0.5

East Hunsbury (7947)²			
	vote	share	
Eldred B.	Con	2,045	70.3
Larratt P.*	Con	1,736	-
Price J.	LD	862	29.7
Panebianco J. Ms.	LD	669	-
Turnout		39.2	40.7

Eastfield (3580)			
		vote	share
Gowen E. Ms.	Lab	531	38.7
Hawkins J. Ms.	Con	445	32.4
Wilson J.	LD	269	19.6
Lochmuller A.	Green	81	5.9
Bricher C.	CPA	47	3.4
Turnout		38.8	6.3

Headlands (3653)			
		vote	share
Subbarayan S.	Lab	494	36.9
Rolfe P.	Con	489	36.5
Islam N.	LD	355	26.5
Turnout		37.1	0.4

Kings Heath (3315)			
		vote	share
Conroy R.*	LD	476	47.6
O'Connor S.	Lab	352	35.2
Andreoli A.	Con	173	17.3
Turnout		30.4	12.4

Kingsley (4026)			
		vote	share
Mennell B. Ms.	Lab	477	31.4
Maloney V. Ms.	Con	454	29.8
Quinn M.	LD	363	23.9
Fitzpatrick E.	Ind	169	11.1
Pickup D.	TUSC	58	3.8
Turnout		38.1	1.5

Kingsthorpe (3647)			
		vote	share
Beardsworth S. Ms.*	LD	702	41.1
O'Connor M.	Con	581	34.1
Whitford A.	Lab	331	19.4
Beasley R.	BNP	92	5.4
Turnout		47.1	7.1

Nene Valley (7821) ²			
		vote	share
Hill M.*	Con	1,790	53.1
Nunn J.	Con	1,596	-
Costello L.	Ind	1,056	31.3
Crake J.	LD	524	15.5
Glynane C. Ms.	LD	425	-
Turnout		41.2	21.8

New Duston (7796) ²			
		vote	share
Golby M.	Con	1,714	44.7
Caswell J.*	Con	1,614	-
Croke J. Ms.	Lab	789	20.6
Huffadine-Smith D.	Ind	671	17.5
Macarthur M.	UKIP	387	10.1
Conroy F. Ms.	LD	271	7.1
Minney M. Ms.	LD	190	-
Turnout		43.7	24.1

Obelisk (3566)			
		vote	share
Markham M. Ms.	Con	371	36.2
Phillips J. Ms.	Lab	299	29.2
Perkins D.*	LD	258	25.2
Howsam J.	UKIP	96	9.4
Turnout		28.9	7.0

Old Duston (6114) ²			
		vote	share
Hadland T.*	Con	1,134	40.7
Patel S.	Con	803	-
Green D.	North SOPC	642	23.0
Taylor R.	LD	513	18.4
Tuttle H.	North SOPC	361	-
Wire F. Ms.	Lab	344	12.3
Ledington M. Ms.	LD	193	-
Ratnasingham K.	UKIP	155	5.6
Turnout		44.2	17.6

Park (3628)			
		vote	share
Duncan N.	Con	1,425	74.6
Garlick D.*	LD	484	25.4
Turnout		54.7	49.3

Parklands (3694)			
		vote	share
Hallam M.	Con	1,026	61.0
Phillips G.	LD	410	24.4
Burton R.	UKIP	199	11.8
Bricher P.	CPA	46	2.7
Turnout		46.5	36.6

Phippsville (3229)			
		vote	share
King A. Ms.	Con	555	38.8
Taylor M. Ms.*	LD	499	34.9
Rock M.	Green	376	26.3
Turnout		45.3	3.9

Rectory Farm (3696)			
		vote	share
Mackintosh D.	Con	842	74.1
Beardsworth M.	LD	294	25.9
Turnout		32.2	48.2

Riverside (3454)			
		vote	share
Hibbert S.	Con	537	47.7
Duffy J. Ms.	Lab	463	41.2
Meredith V. Ms.	LD	125	11.1
Turnout		32.9	6.6

Rushmills (3376)			
		vote	share
Flavell P. Ms.*	Con	928	63.6
Wishart A. Ms.	Lab	384	26.3
Barron K.	LD	146	10.0
Turnout		43.5	37.3

Semilong (3706)			
		vote	share
Marriott L.	Lab	437	38.9
Uldall S. Ms.	LD	317	28.3
Carroll P.	Con	222	19.8
Richards S.	Ind	146	13.0
Turnout		30.7	10.7

Spencer (3812)			
		vote	share
Eales G.	Lab	560	38.8
Conroy J. Ms.*	LD	511	35.4
Tyrrell G.	Con	374	25.9
Turnout		38.3	3.4

Spring Park (3782)			
		vote	share
Yates J.*	Con	707	40.9
Bowles G.	LD	531	30.7
Kirby B.	Lab	490	28.4
Turnout		46.3	10.2

St. Davids (3410)			
		vote	share
Choudary N.	Lab	452	46.1
Cullis R.	Con	282	28.8
Woods A.	LD	246	25.1
Turnout		29.1	17.3

St. James (3695)			
		vote	share
Wire T.	Lab	419	34.6
Kilbride A.	Con	386	31.9
Maddison J. Ms.	LD	208	17.2
Jones D.	Ind	198	16.4
Turnout		32.9	2.7

Sunnyside (3229)			
		vote	share
Parekh N.	Con	443	34.6
Crake M-T. Ms.	LD	421	32.9
Haque A.	Lab	359	28.1
Fowler H.	TUSC	56	4.4
Turnout		39.9	1.7

Talavera (7666) ²			
		vote	share
Meredith D.*	LD	868	37.4
Capstick J. Ms.*	Lab	742	32.0
Chaudhury P.	LD	727	-
De Rosario M.	Lab	640	-
Roberts S. Ms.	Con	424	18.3
Rolfe J. Ms.	Con	384	-
Allen J.	UKIP	288	12.4
Turnout		30.6	5.4

Trinity (3284)			
		vote	share
Begum N.	Lab	448	42.9
Simpson A.*	LD	394	37.7
Jones E.	Con	203	19.4
Turnout		32.4	5.2

Upton (3950) ²			
		vote	share
Bottwood A.	Con	900	59.4
Sargeant B.	Con	696	-
Matthews R.*	LD	615	40.6
Collins S.*	LD	565	-
Turnout		40.0	18.8

West Hunsbury (3544)			
		vote	share
Oldham B.	Con	961	52.4
Hope J. Ms.	LD	779	42.5
Buchan P.	CPA	94	5.1
Turnout		52.7	9.9

Westone (3330)			
		vote	share
Lynch M.	Con	669	41.0
Markham C.	LD	520	31.8
Ajayi T.	Lab	339	20.8
Osborne S.	BNP	105	6.4
Turnout		49.6	9.1

