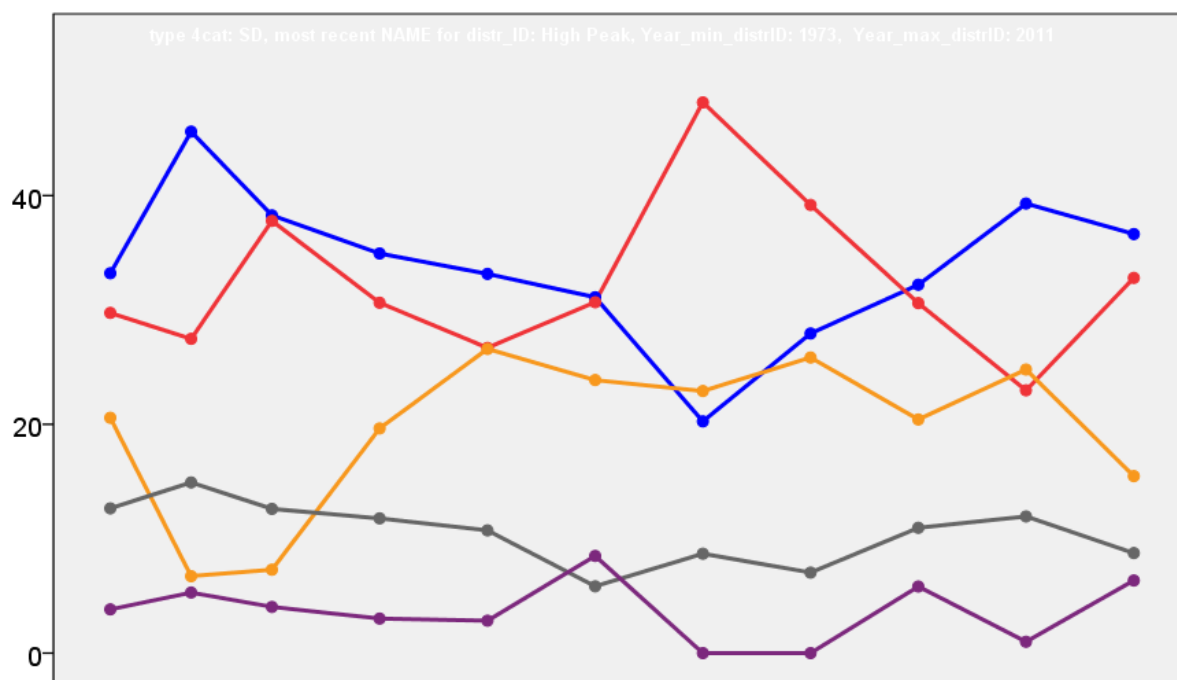


High Peak Borough Council Election Results 1973-2012



Colin Rallings and Michael Thrasher
The Elections Centre
Plymouth University

The information contained in this report has been obtained from a number of sources. Election results from the immediate post-reorganisation period were painstakingly collected by Alan Willis largely, although not exclusively, from local newspaper reports. From the mid-1980s onwards the results have been obtained from each local authority by the Elections Centre. The data are stored in a database designed by Lawrence Ware and maintained by Brian Cheal and others at Plymouth University. Despite our best efforts some information remains elusive whilst we accept that some errors are likely to remain. Notice of any mistakes should be sent to elections@plymouth.ac.uk. The results sequence can be kept up to date by purchasing copies of the annual Local Elections Handbook, details of which can be obtained by contacting the email address above.

Front cover: the graph shows the distribution of percentage vote shares over the period covered by the results. The lines reflect the colours traditionally used by the three main parties. The grey line is the share obtained by Independent candidates while the purple line groups together the vote shares for all other parties.

Rear cover: the top graph shows the percentage share of council seats for the main parties as well as those won by Independents and other parties. The lines take account of any by-election changes (but not those resulting from elected councillors switching party allegiance) as well as the transfers of seats during the main round of local election.

The lower graph shows for each main round of local elections the overall percentage turnout (solid line), the percentage of women candidates standing at (dotted line) and the percentage of women among those elected (hashed line).

High Peak - 1973

Barmoor (1022)			
		vote	share
Milner O.	Ind	0	0.0
Turnout		0.0	0.0
Barms (2405)²			
		vote	share
Hitchings A.	Lab	844	67.3
Ratcliffe N.	Lab	718	-
Pedlow C.	Con	411	32.7
Wood M. Ms.	Con	370	-
Turnout		52.2	34.5
Blackbrook (2370)²			
		vote	share
White G.	Lib	869	45.3
Holford K.	Ind	609	31.8
Sharp G.	Con	439	22.9
Ayres W.	Con	277	-
Turnout		80.9	13.6
Central (1391)			
		vote	share
Walter D.	Con	371	58.8
Scoular C.	Lab	151	23.9
Dunlevy S. Ms.	Lib	109	17.3
Turnout		45.4	34.9
Chapel East (1331)			
		vote	share
Phillips A.	Ind	385	57.8
Hutchinson W.	Con	192	28.8
Grundy D.	Lib	89	13.4
Turnout		50.0	29.0
Chapel West (2642)²			
		vote	share
Bradbury M. Ms.	Con	644	43.3
Bradwell K.	Con	589	-
Wright M.	Lab	438	29.5
Ross-Sharp A.	Lib	404	27.2
Fox E.	Lab	354	-
Turnout		56.2	13.9
College (2539)²			
		vote	share
Allen E. Ms.	Con	0	0.0
Kennett R.	Ind	0	0.0
Turnout		0.0	0.0
Corbar (2214)²			
		vote	share
Millican M. Ms.	Con	679	63.9
Allman A.	Con	618	-
Briggs E. Ms.	Lib	384	36.1
Turnout		48.0	27.8
Cote Heath (2877)²			
		vote	share
Gill T.	Lab	768	70.0
Morley W.	Lab	728	-
Pontin J.	Con	329	30.0
Allwright J. Ms.	Con	325	-
Turnout		38.1	40.0
Hayfield (1764)			
		vote	share
Houghton E.	Con	735	79.9
Cowley J.	Lab	185	20.1
Turnout		52.2	59.8
Ladybower (1131)			
		vote	share
Bedford C. Ms.	Con	0	0.0
Turnout		0.0	0.0

Limestone Peak (1243)

		vote	share
Tomlinson E. Ms.	Con	448	59.5
Walley E.	Ind	305	40.5
Turnout		60.6	19.0
New Mills North (3722)³			
		vote	share
Kitchen F.	Con	908	38.5
Townsend L.	Con	872	-
Ferguson W.	Lab	809	34.3
Livesley D. Ms.	Con	798	-
Lawton J.	Lib	639	27.1
Roberts F.	Lab	627	-
De Mierre J.	Lab	598	-
Lavin E.	Lib	461	-
Turnout		63.3	4.2
New Mills South (3099)³			
		vote	share
Shaw P.	Lab	732	33.8
Bullough F.	Ind	727	33.5
Axon J.	Lab	721	-
Burfoot H.	Lib	708	32.7
Martin J.	Lab	587	-
Brown D.	Lib	552	-
Shepley T.	Lib	499	-
Turnout		69.9	0.2
No. 12 (Whaley Bridge: Fernilee) (1049)			
		vote	share
Woodward F.	Ind	364	63.3
Harlow C.	Lab	211	36.7
Turnout		54.8	26.6
No. 13 (Whaley Bridge: Furness Vale) (879)			
		vote	share
Littlewood H.	Ind	323	60.7
Davies M.	Lab	136	25.6
Mealor C.	Ind	73	13.7
Turnout		60.5	35.2
No. 14 (Whaley Bridge: Taxal) (898)			
		vote	share
Hartley R.	Ind	343	58.8
Winfield E.	Lab	240	41.2
Turnout		64.9	17.7
No. 15 (Whaley Bridge: Yeadsley) (1249)			
		vote	share
Plumley R.	Con	235	29.3
Pritchard J.	Ind	194	24.2
Smith C.	Lib	190	23.7
Brown G.	Lab	182	22.7
Turnout		64.1	5.1
No. 16 (Charlesworth) (1238)			
		vote	share
Tetlow B. Ms.	Con	572	63.8
Barnforth J.	Lib	238	26.5
Bowman D.	Lab	87	9.7
Turnout		72.5	37.2
No. 7 (Glossop: All Saints) (4077)³			
		vote	share
Chatterton G.	Res	927	35.0
Matthews P.	Res	690	-
Mountain E.	Con	591	22.3
Pocklington R.	Lab	554	20.9
Grills R.	Lab	479	-
Bracewell K.	Lab	458	-
Cowin W.	Con	432	-
Mittam T.	Con	399	-
Hill K.	Lib	343	13.0
Machan G.	Conserv	230	8.7
Turnout		64.9	12.7

No. 8 (Glossop: St. James) (4624)⁴

		vote	share
Partridge R.	Con	1,063	38.7
Leney A.	Con	1,055	-
Johnson D.	Lib	994	36.2
Dickinson K.	Con	944	-
Dunn W.	Con	937	-
Dunkerley H.	Lab	690	25.1
Fowler L.	Lab	573	-
Turnout		59.4	2.5
No. 9 (Glossop: Hadfield) (8051)⁶			
		vote	share
Campbell W.	Lab	1,577	36.1
Hoy K.	Lab	1,508	-
Davies G.	Con	1,361	31.1
Duncan S.	Con	1,331	-
Toole D.	Con	1,326	-
Jackson M.	Con	1,319	-
Keelan P.	Lab	1,316	-
Stubbs F.	Lab	1,305	-
Read E.	Lab	1,274	-
Byford J.	Lab	1,238	-
Walton I.	Lib	1,215	27.8
Heald R.	Comm	221	5.1
Turnout		54.3	4.9
Peveiril (1488)			
		vote	share
Lewis C.	Con	548	59.8
Marples E.	Ind	246	26.9
Powell J. Ms.	Lab	122	13.3
Turnout		61.6	33.0
Stone Bench (3081)²			
		vote	share
Poulter W.	Lab	943	80.1
Poulton J.	Lab	744	-
Rogers R.	Ind	234	19.9
Turnout		38.2	60.2
Tintwistle (1079)			
		vote	share
Quayle T.	Con	453	63.0
Bennett B.	Lab	266	37.0
Turnout		66.6	26.0
High Peak - 1976			
Barmoor (1030)			
		vote	share
Millner O.*	Ind	325	53.8
Hutchinson W.	Con	279	46.2
Turnout		58.7	7.6
Barms (2366)²			
		vote	share
Hitchings A.*	Lab	828	57.4
Milburn R.	Con	615	42.6
Ward C.	Lab	543	-
Bradbury E. Ms.	Con	514	-
Turnout		55.2	14.8
Blackbrook (2349)²			
		vote	share
White G.*	Lib	0	0.0
Colley B. Ms.	Con	0	0.0
Turnout		0.0	0.0
Central (1369)			
		vote	share
Walter R.*	Con	521	68.1
Ellis G.	Lab	244	31.9
Turnout		55.9	36.2

Chapel East (1319)			
		vote	share
Phillips A.*	Ind	475	63.5
Eva D.	Con	219	29.3
Jones K.	Lab	54	7.2
Turnout		56.7	34.2

Chapel West (2856) ²			
		vote	share
Bradbury M. Ms.*	Con	829	49.1
Bradwell K.*	Con	666	-
Wright M.	Lab	430	25.5
Ellison H.	Ind	428	25.4
Bennett T.	Lab	323	-
Turnout		52.3	23.7

College (2556) ²			
		vote	share
Craufurd-Stuart J. Ms.	Con	838	64.7
Allen E. Ms.*	Con	689	-
Allen J. Ms.	Conserv	457	35.3
Turnout		45.0	29.4

Corbar (2248) ²			
		vote	share
Millican M. Ms.*	Con	818	76.4
Allman A.*	Con	707	-
Rosier B.	Lab	253	23.6
Turnout		43.6	52.8

Cote Heath (3085) ²			
		vote	share
Gill T.*	Ind	903	46.2
Halliday B.	Lab	550	28.1
Tamsons I. Ms.	Con	502	25.7
Allwright J. Ms.	Con	478	-
Wilson J.	Lab	422	-
Turnout		51.8	18.1

Hayfield (1792)			
		vote	share
Barnes F.	Ind	402	42.2
Cooper G.	Con	401	42.1
Bennett I.	Lab	150	15.7
Turnout		53.6	0.1

Ladybower (1155)			
		vote	share
Bingham G.	Con	499	70.6
Byford J.	Lab	208	29.4
Turnout		61.2	41.2

Limestone Peak (1298)			
		vote	share
Tomlinson E. Ms.*	Con	420	64.7
Walley E.	Ind	229	35.3
Turnout		50.0	29.4

New Mills North (3883) ³			
		vote	share
Townsend L.*	Con	1,016	42.8
Livesley D. Ms.	Con	916	-
Colley B. Ms.	Con	834	-
Ferguson W.*	Lab	711	29.9
Weaver C.	Lib	648	27.3
Demierre J.	Lab	454	-
Fryman D. Ms.	Lab	396	-
Turnout		50.6	12.8

New Mills South (3036) ³			
		vote	share
Brown D.	Lib	749	27.5
McMurray J.	Con	718	26.3
Bullough F.*	Ind	707	25.9
Axon J.*	Lab	554	20.3
Williams M. Ms.	Lab	425	-
Turnout		50.2	1.1

No. 12 (Whaley Bridge: Fernilee) (1050)			
		vote	share
Woodward F.*	Ind	506	80.1
Conway J.	Lab	126	19.9
Turnout		60.6	60.1

No. 13 (Whaley Bridge: Furness Vale) (888)			
		vote	share
Littlewood H.*	Ind	414	70.4
Mason V. Ms.	Lab	174	29.6
Turnout		66.5	40.8

No. 14 (Whaley Bridge: Taxal) (876)			
		vote	share
Hartley R.*	Con	287	52.7
Hartley F.	Ind	137	25.1
Ludden B.	Lab	121	22.2
Turnout		63.0	27.5

No. 15 (Whaley Bridge: Yeadsley) (1344)			
		vote	share
Pritchard J.	Ind	391	41.6
Ralston G.	Con	325	34.5
Jones C. Ms.	Lab	225	23.9
Turnout		70.1	7.0

No. 16 (Charlesworth) (1282)			
		vote	share
Tetlow B. Ms.*	Con	800	89.0
Keelan P.	Lab	99	11.0
Turnout		70.1	78.0

No. 7 (Glossop: All Saints) (4072) ³			
		vote	share
Chatterton G.*	Res	980	40.0
Mountain E.*	Con	689	28.1
Greenhalgh I. Ms.	Con	593	-
Wharmby G.	Con	578	-
Matthews P.*	Res	572	-
Cocks S.	Lab	430	17.5
Bracewell K.*	Lab	410	-
Whitson L. Ms.	Lab	380	-
Durkin P.	Res	355	-
Machin G.	Conserv	186	7.6
Mitchell G. Ms.	Lib	166	6.8
Turnout		50.3	11.9

No. 8 (Glossop: St. James) (5375) ⁴			
		vote	share
Leney A.*	Con	1,547	54.1
Partridge R.*	Con	1,502	-
Dickenson K.*	Con	1,441	-
Mellor A. Ms.	Con	1,296	-
Mann R.	Lab	659	23.0
Johnson D.	Lib	654	22.9
Ashton C. Ms.	Lab	629	-
Carr D.	Lab	616	-
Pomfret A.	Lab	535	-
Turnout		48.3	31.0

No. 9 (Glossop: Hadfield) (8156) ⁶			
		vote	share
Holton D.	Lab	1,946	47.5
Cooke R.	Lab	1,847	-
Jackson M.*	Con	1,845	45.0
Stubbs F.	Lab	1,835	-
Francis J.	Lab	1,809	-
Dunn D.	Con	1,795	-
Wilson D.	Con	1,780	-
Toole D.*	Con	1,774	-
Stevenson A.	Con	1,731	-
Ross M.	Con	1,717	-
Powell K.	Lab	1,691	-
Lomas S.	Lab	1,671	-
Heald R.	Comm	306	7.5
Turnout		47.7	2.5

Peveril (1489)			
		vote	share
Lewis C.*	Con	788	83.5
Monteith M. Ms.	Lab	156	16.5
Turnout		63.8	66.9

Stone Bench (3052) ²			
		vote	share
Morley W.	Lab	850	57.8
Poulton J.*	Lab	717	-
McIlvenny G.	Con	621	42.2
Turnout		42.6	15.6

Tintwistle (1084)			
		vote	share
Pennington C.	Con	445	61.1
Wilcox D.	Lab	283	38.9
Turnout		67.1	22.3

High Peak - 1979

All Saints (3991) ³			
		vote	share
Cocks S.	Lab	1,561	37.3
Chatterton G.	Res	1,480	35.4
Turner C.	Lab	1,313	-
Powell K.	Lab	1,147	-
Greenhalgh I. Ms.	Con	1,145	27.4
Love R.	Con	1,012	-
Turnout		104.9	1.9

Barmoor (1046)			
		vote	share
Cartledge H.	Ind	622	73.3
Jones P.	Lab	226	26.7
Turnout		81.1	46.7

Barms (2709) ²			
		vote	share
Hitchings A.	Lab	1,467	64.7
Langham B. Ms.	Lab	1,108	-
Inglefield A.	Con	801	35.3
Wallace C.	Con	720	-
Turnout		83.7	29.4

Blackbrook (2410) ²			
		vote	share
Colley B. Ms.	Con	0	0.0
White G.	Lib	0	0.0
Turnout		0.0	0.0

Central (1406)			
		vote	share
Walter D.	Con	0	0.0
Turnout		0.0	0.0

Chapel East (1364)			
		vote	share
Phillips A.	Ind	622	55.6
Dawson C. Ms.	Con	337	30.1
Bryan D.	Ind	160	14.3
Turnout		82.0	25.5

Chapel West (3027) ²			
		vote	share
Bradbury M. Ms.	Con	0	-
Bradwell K.	Con	0	0.0
Turnout		0.0	0.0

College (2608) ²			
		vote	share
Inglefield E. Ms.	Con	0	0.0
Crauford-Stuart J. Ms.	Con	0	-
Turnout		0.0	0.0

Corbar (2483) ²			
		vote	share
Millican M. Ms.	Con	1,219	67.4
Allman A.	Con	1,034	-
Garside R.	Lab	590	32.6
Turnout		72.9	34.8

Cote Heath (3480)²			
		vote	share
Gill T.	Ind	910	38.1
Ratcliffe N.	Lab	824	34.5
Surrey D.	Con	654	27.4
Robinson H. Ms.	Con	491	-
Tamsons I. Ms.	Ind	397	-
Turnout		68.6	3.6

Gamesley (2533)²			
		vote	share
Francis J.	Lab	1,420	72.6
Cooke R.	Lab	1,346	-
Lemon H.	Con	498	25.5
Watson L. Ms.	Con	460	-
Heald R.	Comm	37	1.9
Turnout		77.2	47.2

Hayfield (1868)			
		vote	share
Barnes F.	Ind	854	57.2
Mellor H.	Con	407	27.2
Wilcox D.	Lab	233	15.6
Turnout		80.0	29.9

Ladybower (1144)			
		vote	share
Bingham G.	Con	775	82.5
Byford J.	Lab	164	17.5
Turnout		82.1	65.1

Limestone Peak (1321)			
		vote	share
Tomlinson E. Ms.	Ind	0	0.0
Turnout		0.0	0.0

New Mills North (3899)³			
		vote	share
Brennand D. Ms.	Con	1,574	37.0
Livesley D. Ms.	Con	1,571	-
Mone J.	Con	1,545	-
Doughty G.	Lib	1,525	35.9
Dearden S.	Lab	1,152	27.1
Turnout		109.0	1.2

New Mills South (3114)²			
		vote	share
McMurray J.	Con	1,226	37.9
Burfoot H.	Lib	1,155	35.7
Allen L.	Lab	858	26.5
Bullough F.	Con	758	-
Fryman D. Ms.	Lab	424	-
Turnout		104.0	2.2

Peveril (1608)			
		vote	share
Lewis C.	Con	0	0.0
Turnout		0.0	0.0

Simmondley (1896)			
		vote	share
Heath W.	Con	674	43.1
Slattery M.	Lab	470	30.0
Ashley J. Ms.	Lib	421	26.9
Turnout		82.5	13.0

St. Andrews (2900)²			
		vote	share
Jackson M.	Con	1,125	49.5
Ferguson R.	Con	1,077	-
Hopkin J. Ms.	Lab	1,065	46.9
Pagett J.	Lab	1,048	-
Clarke J. Ms.	Comm	83	3.7
Turnout		78.4	2.6

St. Charles (2774)²			
		vote	share
Holtom D.	Lab	1,218	57.3
Stubbs F.	Lab	1,115	-
Mitchell C. Ms.	Con	787	37.1
Toole D.	Con	777	-
O'Toole T.	Comm	119	5.6
Turnout		76.6	20.3

St. James (4027)³			
		vote	share
Wharmby G.	Con	1,513	52.8
Dickenson K.	Con	1,422	-
Leney A.	Con	1,407	-
Mann R.	Lab	1,353	47.2
Ashton C. Ms.	Lab	1,323	-
Carr D.	Lab	1,308	-
Turnout		71.2	5.6

St. Johns (1363)			
		vote	share
Tetlow B. Ms.	Con	934	82.0
Wilcox J. Ms.	Lab	205	18.0
Turnout		83.6	64.0

Stone Bench (2818)²			
		vote	share
Morley W.	Lab	1,577	74.0
Poulton J.	Lab	1,398	-
Taylor-Clague A.	Con	553	26.0
Turnout		75.6	48.1

Tintwistle (1080)			
		vote	share
Bennett R.	Lab	480	51.7
Pennington C.	Con	449	48.3
Turnout		86.0	3.3

Whaley Bridge (4253)³			
		vote	share
Pritchard J.	Ind	2,193	43.9
Woodward F.	Ind	1,854	-
Littlewood H.	Con	1,601	32.0
Burch M.	Lab	1,203	24.1
Brown G.	Lab	1,147	-
Everett B.	Con	887	-
Turnout		117.5	11.8

High Peak - 1983

All Saints (4173)³			
		vote	share
Cocks S.*	Lab	1,272	40.6
Chatterton G.*	Res	1,220	39.0
Vaughan F.	Lab	1,019	-
Mountain E.	Con	638	20.4
Jackson M.	Con	593	-
Turnout		75.0	1.7

Barmoor (1024)			
		vote	share
Cartledge H.*	Con	402	71.0
Britt J.	Lab	164	29.0
Turnout		55.3	42.0

Barms (2720)²			
		vote	share
Hitchings A.*	Ind	1,142	41.7
Langham B. Ms.*	Lab	754	27.6
Diamond M.	Con	499	18.2
Hedley I.	Lib/SDP	341	12.5
Turnout		100.6	14.2

Blackbrook (2456)²			
		vote	share
White G.*	Lib/SDP	827	49.0
Colley B. Ms.*	Con	615	36.4
Inglefield A.	Con	547	-
Oliver D.	Lib/SDP	424	-
Birt C.	Lab	247	14.6
Turnout		68.8	12.6

Central (1401)			
		vote	share
Morris R.	Con	475	56.2
Bryant B. Ms.	Lib/SDP	221	26.2
Burden S.	Lab	149	17.6
Turnout		60.3	30.1

Chapel East (1344)			
		vote	share
Phillips A.*	Ind	311	43.0
Clives S.	Con	218	30.2
Fisher B.	Lab	194	26.8
Turnout		53.8	12.9

Chapel West (3024)²			
		vote	share
Bradbury M. Ms.*	Ind	629	31.4
Young A. Ms.	Con	619	30.9
Bradwell K.*	Con	505	-
Jones P.	Lab	381	19.0
Ashenden P.	Lib/SDP	372	18.6
Bryan D.	Ind	318	-
Manion T.	Lab	305	-
Turnout		66.2	0.5

College (2624)²			
		vote	share
Inglefield E. Ms.*	Con	805	52.8
Allman A.	Con	702	-
Adams W. Ms.	Lib/SDP	562	36.8
Hedley B. Ms.	Lib/SDP	519	-
Taylor G. Ms.	Lab	159	10.4
Turnout		58.2	15.9

Corbar (2505)²			
		vote	share
Millican M. Ms.*	Con	781	48.2
Brooke P.	Con	762	-
Cresswell J. Ms.	Lib/SDP	460	28.4
Pearson-Smith M.	Lab	380	23.4
Turnout		64.7	19.8

Cote Heath (3811)²			
		vote	share
Loader M.	Lib/SDP	752	35.9
Ratcliffe N.*	Lab	728	34.7
McGrother J. Ms.	Lab	617	-
Chape J. Ms.	Con	616	29.4
Hall A.	Lib/SDP	501	-
Turnout		55.0	1.1

Gamesley (2580)²			
		vote	share
Francis J.*	Lab	967	72.2
Cooke R.*	Lab	863	-
Wildgoose J.	Con	211	15.7
Marquand J. Ms.	Lib/SDP	162	12.1
Turnout		51.9	56.4

Hayfield (1894)			
		vote	share
Mellor H.	Con	635	64.1
Bull J.	Lab	355	35.9
Turnout		52.3	28.3

Ladybower (1213)			
		vote	share
Bingham G.*	Con	543	81.7
Cusick J.	Lab	122	18.3
Turnout		54.8	63.3

Limestone Peak (1325)			
		vote	share
Tomlinson E. Ms.*	Ind	568	81.0
Monks G.	Lab	133	19.0
Turnout		52.9	62.1

New Mills North (3157) ³			
		vote	share
Livesley D. Ms.*	Con	983	34.3
Brennand D. Ms.*	Con	978	-
Huddleston M.	Lab	946	33.0
Bickerton R.	Lib/SDP	940	32.8
Allen L.	Lab	914	-
Eary J.	Lab	868	-
Turnout		90.9	1.3

New Mills South (3922) ²			
		vote	share
Burfoot H.*	Lib/SDP	801	39.2
Fernley J.	Lab	766	37.5
Williams M. Ms.	Lab	762	-
Robinson W.	Con	475	23.3
Ferguson R.	Con	330	-
Turnout		52.1	1.7

Peveril (1651)			
		vote	share
Lewis C.*	Con	705	70.9
Kellie A. Ms.	Lib/SDP	186	18.7
Powell J. Ms.	Lab	103	10.4
Turnout		60.2	52.2

Simmondley (2059)			
		vote	share
Phipps J.	Con	522	52.5
Pagett J.	Lab	250	25.1
Ashley J. Ms.	Lib/SDP	223	22.4
Turnout		48.3	27.3

St. Andrews (3006) ²			
		vote	share
Holtom M. Ms.	Lab	824	46.7
Hallsworth J.	Lab	715	-
Wilson D.	Con	621	35.2
Farnsworth T.	Con	566	-
O'Brien C.	Lib/SDP	318	18.0
Turnout		58.6	11.5

St. Charles (2917) ²			
		vote	share
Holtom D.*	Lab	907	53.2
Stubbs F.*	Lab	799	-
Wood W.	Con	522	30.6
Mitchell C. Ms.	Con	470	-
Randall T.	Lib/SDP	276	16.2
Turnout		58.5	22.6

St. James (4071) ³			
		vote	share
Leney A.*	Con	924	40.7
Proctor L.	Con	847	-
Von Achten S. Ms.	Con	833	-
Turner C.	Lab	766	33.8
Wood A. Ms.	Lab	682	-
Gilbert A.	Lab	631	-
Mellor C.	Lib/SDP	579	25.5
Love R.	Lib/SDP	502	-
Turnout		55.7	7.0

St. Johns (1460)			
		vote	share
Tetlow B. Ms.*	Con	780	80.2
Holland P.	Lab	192	19.8
Turnout		66.6	60.5

Stone Bench (2780) ²			
		vote	share
Poulton J.*	Lab	898	55.9
Browne R.	Lab	837	-
Taylor R.	Lib/SDP	369	23.0
Bennett A.	Con	340	21.2
Pearson D.	Con	289	-
Turnout		57.8	32.9

Tintwistle (1122)			
		vote	share
Cooper W.	Con	477	61.6
Carr D.	Lab	297	38.4
Turnout		69.0	23.3

Whaley Bridge (4322) ³			
		vote	share
Hallam J. Ms.	Ind	2,108	55.6
Pritchard J.*	Ind	1,208	-
Woodward F.*	Ind	1,111	-
Littlewood H.*	Con	711	18.8
Pollitt J.	Con	619	-
Weaver C.	Lib/SDP	550	14.5
Mason V. Ms.	Lab	423	11.2
Butler P. Ms.	Lib/SDP	398	-
Taylor P.	Lab	231	-
Wilkinson R.	Lab	214	-
Turnout		87.7	36.8

High Peak - 1987

All Saints (4937) ³			
		vote	share
Chatterton G.*	Res	1,234	31.5
Farnsworth T.	Con	992	25.3
Turner C.	Lab	989	25.2
Wilkinson R.	Lab	851	-
Smith R. Ms.	Lab	825	-
Hiley F.	Lib/SDP	708	18.0
Thompson B. Ms.	Lib/SDP	673	-
Turnout		79.5	6.2

Barmoor (1032)			
		vote	share
Millward B.	Ind	286	49.0
Greaves P.	Con	228	39.0
Leah M. Ms.	Lab	70	12.0
Turnout		56.6	9.9

Barms (2865) ²			
		vote	share
Hitchings A.*	Ind	885	38.2
Langham B. Ms.*	Lab	612	26.4
Diamond M.	Con	467	20.2
Fairhurst J. Ms.	Lib/SDP	352	15.2
Turnout		80.8	11.8

Blackbrook (2591) ²			
		vote	share
Ashenden P.	Lib/SDP	844	47.1
Coackley P.	Con	663	37.0
Burns S. Ms.	Lib/SDP	631	-
Ayres A.	Lab	284	15.9
Knights D.	Lab	220	-
Turnout		69.1	10.1

Central (1400)			
		vote	share
Chape J. Ms.	Con	294	41.2
Bryant M.	Lib/SDP	258	36.2
Pearson-Smith M.	Lab	161	22.6
Turnout		50.9	5.0

Chapel East (1492)			
		vote	share
Boote J.	Lib/SDP	390	51.5
Bryan D.	Ind	235	31.0
O'Brian C. Ms.	Lab	132	17.4
Turnout		50.7	20.5

Chapel West (3383) ²			
		vote	share
Young A. Ms.*	Con	890	32.0
Bradbury M. Ms.*	Ind	874	31.4
Barber S. Ms.	Lib/SDP	723	26.0
Berry H.	Lab	294	10.6
Jones P.	Lab	284	-
Turnout		82.2	0.6

College (2677) ²			
		vote	share
Inglefield E. Ms.*	Con	849	48.1
Allman A.*	Con	797	-
Allwright J. Ms.	Lib/SDP	672	38.1
Morris J.	Lab	245	13.9
Turnout		66.0	10.0

Corbar (2539) ²			
		vote	share
Brooke P.*	Con	747	51.4
Millican M. Ms.*	Con	731	-
Mason V. Ms.	Lab	355	24.4
Howarth K.	Lib/SDP	352	24.2
Turnout		57.3	27.0

Cote Heath (3713) ²			
		vote	share
Loader M.*	Lib/SDP	890	44.3
Newsam P.	Lib/SDP	627	-
Mone A. Ms.	Lab	561	27.9
Bradbury E. Ms.	Con	557	27.7
Redfern P.	Lab	450	-
Turnout		54.1	16.4

Gamesley (2469) ²			
		vote	share
Francis J.*	Lab	969	74.7
Cooke R.*	Lab	895	-
Mottram E.	Con	164	12.6
Dunkerley H.	Lib/SDP	164	12.6
Turnout		52.5	62.1

Hayfield (1968)			
		vote	share
Mellor H.*	Con	657	62.6
Bull J.	Lab	392	37.4
Turnout		53.3	25.3

Ladybower (1256)			
		vote	share
Bingham G.*	Con	553	67.9
Wingfield I.	Lib/SDP	162	19.9
Taylor G. Ms.*	Lab	100	12.3
Turnout		64.9	48.0

Limestone Peak (1331)			
		vote	share
Tomlinson E. Ms.*	Ind	588	84.4
Robinson S. Ms.	Lab	109	15.6
Turnout		52.4	68.7

New Mills North (4072) ³			
		vote	share
Brennand D. Ms.*	Con	1,041	34.8
Bickerton R.	Lib/SDP	1,011	33.8
Livesley D. Ms.*	Con	994	-
Huddleston M.*	Lab	943	31.5
Griffiths G.	Lab	831	-
Hill V. Ms.	Lab	770	-
Woodward D.	Lib/SDP	745	-
Gladding D.	Lib/SDP	644	-
Turnout		73.6	1.0

New Mills South (3102) ²			
		vote	share
Burfoot H.*	Lib/SDP	761	39.3
Williams M. Ms.	Lab	739	38.2
Rae D.	Lab	702	-
Dearden S.	Lib/SDP	504	-
Bowen M. Ms.	Con	436	22.5
Craddock R.	Con	373	-
Turnout		62.4	1.1

Peveril (1691)			
		vote	share
Lewis C.*	Con	603	59.6
Kellie A. Ms.	Lib/SDP	280	27.7
Davies C. Ms.	Lab	129	12.7
Turnout		59.8	31.9

Simmondley (2111)			
		vote	share
Abbott B.	Con	486	40.3
Wood G.	Lib/SDP	440	36.5
Bunting H.	Lab	281	23.3
Turnout		57.2	3.8

St. Andrews (2995) ²			
		vote	share
Holtom M. Ms.*	Lab	826	40.0
Hallsworth J.*	Lab	739	-
Moss N.	Con	723	35.0
Angus J.	Lib/SDP	517	25.0
Turnout		69.0	5.0

St. Charles (3127) ²			
		vote	share
Holtom D.*	Lab	944	47.1
Stubbs F.*	Lab	829	-
Jones J.	Con	630	31.4
Randall T.	Lib/SDP	431	21.5
Turnout		64.1	15.7

St. James (4190) ³			
		vote	share
Proctor L.*	Con	947	39.8
Buckley G.	Con	912	-
Sharp B. Ms.	Con	888	-
Thompson M.	Lib/SDP	744	31.3
Thatcher W.	Lib/SDP	723	-
Robertson J.	Lib/SDP	701	-
Gilbert A.	Lab	687	28.9
Garlick N.	Lab	679	-
Stone R.	Lab	626	-
Turnout		56.8	8.5

St. Johns (1645)			
		vote	share
Tetlow B. Ms.*	Con	760	69.8
Harbut C.	Lib/SDP	183	16.8
Urquhart P.	Lab	146	13.4
Turnout		66.2	53.0

Stone Bench (2779) ²			
		vote	share
Browne R.*	Lab	808	56.3
Poulton J.*	Lab	806	-
Clayton P.	Lib/SDP	323	22.5
Diamond L. Ms.	Con	303	21.1
Turnout		51.6	33.8

Tintwistle (1137)			
		vote	share
Cooper W.*	Con	324	40.7
Jenner P.	Lab	239	30.0
Leah J.	Lib/SDP	233	29.3
Turnout		70.0	10.7

Whaley Bridge (4497) ³			
		vote	share
Hallam E. Ms.	Ind	1,808	38.6
Pritchard J.*	Ind	1,467	-
Smith C. Ms.	Lib/SDP	1,145	24.4
Fox G.	Con	1,127	24.0
Allen D.	Lab	610	13.0
Bottomley S. Ms.	Lab	551	-
Brunt M.	Lab	532	-
Turnout		104.3	14.1

High Peak - 1991

All Saints (5065) ³			
		vote	share
Wilkinson R.*	Lab	1,159	40.1
Bond D.	Lab	1,111	-
Whitson L. Ms.	Lab	1,086	-
Farnsworth T.*	Con	1,031	35.7
Postlethwaite F.	Con	990	-
Wendon M.	Con	881	-
Kuppan G.	LD	371	12.8
Winterbottom R.	Green	328	11.4
Webb I.	Green	240	-
Ledger S. Ms.	Green	227	-
Turnout		53.5	4.4

Barmoor (1071)			
		vote	share
Millward B.*	Ind	307	55.0
Udale D.	Con	166	29.7
Waddell I.	Lab	85	15.2
Turnout		52.1	25.3

Barms (2908) ²			
		vote	share
Mone A. Ms.	Lab	655	42.1
Uprichard A.	Lab	589	-
Corrigan T.	Con	559	36.0
Williams M. Ms.	Con	543	-
Allwright D.	LD	180	11.6
Beswick K. Ms.	Green	160	10.3
Mortin S. Ms.	Green	120	-
Turnout		52.5	6.2

Blackbrook (2746) ²			
		vote	share
Ashenden P.*	LD	893	46.5
Burns S. Ms.	LD	641	-
Coackley P.*	Con	617	32.2
Crow D.	Con	569	-
Ayres A.	Lab	241	12.6
Tattersfield C. Ms.	Green	168	8.8
Turnout		60.7	14.4

Central (1381)			
		vote	share
Chape J. Ms.*	Con	333	47.6
Bryant M.	LD	254	36.3
Floyd R.	Green	113	16.1
Turnout		50.7	11.3

Chapel East (1517)			
		vote	share
Boote J.*	LD	439	53.3
Trimmer T.	Lab	214	26.0
Bancroft J. Ms.	Con	171	20.8
Turnout		54.3	27.3

Chapel West (3454) ²			
		vote	share
Young A. Ms.*	Con	681	28.4
Bradbury M. Ms.*	Ind	590	24.6
Harrison F.	Ind	494	-
Mellor J. Ms.	Green	414	17.3
Weigold J.	LD	392	16.3
Ayres J. Ms.	Lab	321	13.4
Turnout		49.4	3.8

College (2703) ²			
		vote	share
Inglefield E. Ms.*	Con	749	51.1
Allman A.*	Con	734	-
Allwright H. Ms.	LD	461	31.4
Pearson C.	Green	256	17.5
Clements J.	Green	254	-
Turnout		50.9	19.6

Corbar (2633) ²			
		vote	share
Brooke P.*	Con	682	48.5
Millican M. Ms.*	Con	664	-
Rooker K.	LD	262	18.6
Mason V. Ms.	Lab	256	18.2
Dugdale R.	Green	207	14.7
Jones D.	Green	173	-
Turnout		47.6	29.9

Cote Heath (3658) ²			
		vote	share
Loader M.*	LD	861	44.8
Newsam P.*	LD	677	-
Mone P.	Lab	609	31.7
McGrother J. Ms.	Lab	506	-
Kirk K.	Con	452	23.5
Turnout		49.7	13.1

Gamesley (2370) ²			
		vote	share
Francis J.*	Lab	1,045	83.8
Cooke R.*	Lab	957	-
Sayers E. Ms.	Ind	110	8.8
Thomas-Jones M. Ms.	Green	92	7.4
Turnout		52.1	75.0

Hayfield (2038)			
		vote	share
Mellor H.*	Con	633	54.0
Divall C.	Lab	312	26.6
Milling J. Ms.	Green	128	10.9
Bruce D.	LD	100	8.5
Turnout		57.6	27.4

Ladybower (1234)			
		vote	share
Bingham G.*	Con	473	61.3
Taylor G. Ms.	Lab	177	23.0
Ayres A. Ms.	Green	121	15.7
Turnout		62.5	38.4

Limestone Peak (1279)			
		vote	share
Tomlinson E. Ms.*	Ind Con	361	51.3
Allwright J. Ms.	LD	248	35.2
Westley M.	Lab	95	13.5
Turnout		55.0	16.1

New Mills North (4020) ³			
		vote	share
Bickerton R.*	LD	1,038	36.9
Brennand D. Ms.*	Con	807	28.7
Livesley D. Ms.*	Con	724	-
Worthington K.	Lab	717	25.5
Rae S. Ms.	Lab	705	-
Levin C. Ms.	Lab	685	-
Redfern M. Ms.	LD	668	-
Fieldsend A.	LD	653	-
Barnes C.	Con	575	-
Chapman F. Ms.	Green	248	8.8
Turnout		61.1	8.2

New Mills South (3071) ²			
		vote	share
Burfoot H.*	LD	812	50.1
Dearden S.	LD	696	-
Williams M. Ms.*	Lab	671	41.4
Rae D.	Lab	629	-
Shipley M.	Green	139	8.6
Rowles M.	Green	117	-
Turnout		52.4	8.7

Peveril (1686)			
		vote	share
Priestley R.*	Con	563	62.8
Hudson B.	Lab	212	23.6
Kellie A. Ms.	Ind	122	13.6
Turnout		53.2	39.1

Simmondley (2198)			
		vote	share
Sidebottom P.	Con	454	37.3
Wood G.	LD	417	34.3
Grills R.	Lab	291	23.9
Virgo D. Ms.	Green	54	4.4
Turnout		55.3	3.0

St. Andrews (3037) ²			
		vote	share
Holtom M. Ms.*	Lab	926	52.5
Hallsworth J.*	Lab	890	-
Mackay O. Ms.	Con	493	27.9
Edwards L. Ms.	LD	345	19.6
Turnout		52.2	24.5

St. Charles (3181) ²			
		vote	share
Holtom D.*	Lab	920	49.7
Stubbs F.*	Lab	845	-
Bloomer C. Ms.	Con	391	21.1
Curzon D.	LD	322	17.4
Coram I.	Green	219	11.8
Turnout		49.0	28.6

St. James (4182) ³			
		vote	share
Garlick N.	Lab	895	36.2
Gilbert A.	Lab	884	-
Proctor L.*	Con	831	33.6
Wilkinson J. Ms.	Lab	827	-
Buckley G.*	Con	815	-
Sharp B. Ms.*	Con	806	-
Chapman M. Ms.	LD	400	16.2
Oliver G.	Green	347	14.0
Wilson E. Ms.	Green	283	-
Lindley M.	Green	278	-
Turnout		54.5	2.6

St. Johns (1796)			
		vote	share
Tetlow B. Ms.*	Con	651	64.3
Harbut C.	LD	224	22.1
Urquhart P.	Lab	138	13.6
Turnout		56.4	42.2

Stone Bench (2687) ²			
		vote	share
Browne R.*	Lab	833	60.5
Poulton J.*	Lab	820	-
Allsop D.	Con	323	23.5
Clayton P.	LD	221	16.0
Turnout		45.9	37.0

Tintwistle (1084)			
		vote	share
Brocklehurst J. Ms.	Lab	372	54.5
Cooper W.*	Con	311	45.5
Turnout		63.0	8.9

Whaley Bridge (4628) ³			
		vote	share
Smith C. Ms.*	LD	1,183	27.9
Pritchard J.*	Ind	1,178	27.8
Lomax D.	LD	1,174	-
Bottomley J.	Lab	967	22.8
Wallwork S. Ms.	Con	913	21.5
Turnout		56.2	0.1

High Peak - 1995

All Saints (5083) ³			
		vote	share
Bond D.*	Lab	1,364	65.9
Wilkinson R.*	Lab	1,357	-
Rowbotham R.*	Lab	1,316	-
Shaw A. Ms.	LD	706	34.1
Griffiths R. Ms.	LD	586	-
Kuppan G.	LD	536	-
Turnout		43.1	31.8

Barmoor (1049)			
		vote	share
Millward B.*	Ind	230	51.6
Adderley R.	Lab	142	31.8
Wilkinson R.	LD	74	16.6
Turnout		42.6	19.7

Barms (2896) ²			
		vote	share
Mone A. Ms.*	Lab	838	74.6
Uprichard A.*	Lab	644	-
Baldry R.	Con	285	25.4
Turnout		40.4	49.2

Blackbrook (3828) ²			
		vote	share
Ashenden P.*	LD	781	52.6
Challand D. Ms.*	LD	717	-
Crow D.	Con	386	26.0
Bisknell M.	Lab	317	21.4
Turnout		48.2	26.6

Central (1454)			
		vote	share
McGrother J. Ms.	Lab	315	46.9
Corrigan J. Ms.	Con	206	30.7
Bryant M.	LD	151	22.5
Turnout		46.4	16.2

Chapel East (1509)			
		vote	share
Boote J.*	LD	407	63.7
Hewitt K.	Lab	232	36.3
Turnout		42.5	27.4

Chapel West (3441) ²			
		vote	share
Cobb C. Ms.	Lab	543	26.9
Harrison F.	Ind	498	24.7
Mulhern A.	LD	496	24.6
Young A. Ms.	Con	480	23.8
Bradbury M. Ms.	Ind	401	-
Turnout		41.2	2.2

College (2666) ²			
		vote	share
Williams M. Ms.*	Con	719	53.4
Corrigan T.	Con	673	-
White H. Ms.	Lab	627	46.6
Turnout		49.9	6.8

Corbar (2689) ²			
		vote	share
Watts I.	Lab	512	51.5
Millican M. Ms.*	Con	483	48.5
Beattie C.	Con	482	-
Turnout		38.1	2.9

Cote Heath (3594) ²			
		vote	share
Mone P.	Lab	772	54.7
Savage K.	Lab	690	-
Loader M.	LD	400	28.3
Newsam P.	LD	303	-
Faulkner G. Ms.	Con	240	17.0
Turnout		42.0	26.3

Gamesley (2322) ²			
		vote	share
Cooke R.*	Lab	0	-
Francis J.*	Lab	0	0.0
Turnout		0.0	0.0

Hayfield (2055)			
		vote	share
Mellor H.*	Ind	484	53.6
Noone A. Ms.	Lab	419	46.4
Turnout		44.4	7.2

Ladybower (1236)			
		vote	share
Wingfield I.	Lab	369	54.2
Priestley V. Ms.	Con	312	45.8
Turnout		55.3	8.4

Limestone Peak (1250)			
		vote	share
Redfern P.	Lab	233	38.5
Allwright J. Ms.	LD	190	31.4
Udale D.	Con	182	30.1
Turnout		48.4	7.1

New Mills North (4149) ³			
		vote	share
Shaw A. Ms.	Lab	1,121	39.5
Mycroft L.	Lab	1,110	-
Bickerton R.*	LD	825	29.1
Burfoot D.	LD	616	-
Barnes C.	Con	513	18.1
Hampton A. Ms.	Con	392	-
Fieldsend A.	LD	386	-
Saunders C.	Con	381	-
Ireland M.	Ind	377	13.3
Turnout		54.2	10.4

New Mills South (3120) ²			
		vote	share
Williams M. Ms.	Lab	888	55.6
Dunn W.	Lab	823	-
Burfoot H.	LD	587	36.7
Dearden S.	LD	433	-
Wallis H. Ms.	Con	123	7.7
Turnout		49.6	18.8

Peeveril (1647)			
		vote	share
Priestley R.*	Con	469	51.8
Skelton T.	Lab	307	33.9
Simm J. Ms.	LD	130	14.3
Turnout		55.2	17.9

Simmondley (2177)			
		vote	share
Oakley G.	Lab	456	47.8
Cotter N.	LD	279	29.3
Sidebottom P.	Con	218	22.9
Turnout		43.9	18.6

St. Andrews (3069) ²			
		vote	share
Hallsworth J.*	Lab	791	80.7
Garlick N.*	Lab	780	-
Gregory I.	LD	189	19.3
Turnout		35.4	61.4

St. Charles (3224) ²			
		vote	share
Holtom M. Ms.*	Lab	870	67.2
Francis G. Ms.	Lab	771	-
Mackey O. Ms.	Con	236	18.2
Beard P.	LD	189	14.6
Turnout		37.6	49.0

St. James (4252) ³			
		vote	share
Green S. Ms.	Lab	1,077	59.4
Gilbert A.*	Lab	1,074	-
Wilkinson J. Ms.*	Lab	1,050	-
Worrall A. Ms.	Con	386	21.3
Angus J.	LD	350	19.3
Turnout		39.4	38.1

St. Johns (1894)			
		vote	share
Tetlow B. Ms.*	Con	332	39.1
Poynter F.	Lab	284	33.5
Harbut C.	LD	233	27.4
Turnout		45.0	5.7

Stone Bench (2588) ²			
		vote	share
Browne R.*	Lab	880	89.5
Poulton J.*	Lab	865	-
Mayson R.	Con	103	10.5
		Turnout	39.6 79.0

Tintwistle (1054)			
		vote	share
Brocklehurst J. Ms.*	Lab	341	60.9
Clarke W.	Con	219	39.1
		Turnout	53.2 21.8

Whaley Bridge (4835) ³			
		vote	share
Playford H.	Lab	1,134	31.2
Pritchard J.*	Ind	1,088	29.9
Lomax D.*	LD	1,070	29.4
Eccles A.	Ind	888	-
Pollitt J.	LD	804	-
Healey M.	Con	348	9.6
Barratt W.	Ind	337	-
		Turnout	49.7 1.3

High Peak - 1999

All Saints (5237) ³			
		vote	share
Bond D.*	Lab	970	43.7
Wilkinson R.*	Lab	908	-
Rowbotham R.*	Lab	847	-
Shaw A. Ms.	LD	712	32.1
Wharmby J. Ms.	Con	539	24.3
Peat G.	LD	499	-
Kuppan G.	LD	473	-
		Turnout	36.7 11.6

Barmoor (1064)			
		vote	share
Galloway I.*	LD	284	87.1
Adderley R.	Lab	42	12.9
		Turnout	30.6 74.2

Barms (2882) ²			
		vote	share
Mone A. Ms.*	Lab	555	59.2
Uprichard A.*	Lab	505	-
Sparkes D.	Con	251	26.8
Sparkes I. Ms.	Con	242	-
Wild R.	LD	131	14.0
		Turnout	31.4 32.4

Blackbrook (2903) ²			
		vote	share
Hallworth B.*	LD	594	42.3
Salisbury N.	Con	550	39.2
Laiister A. Ms.	Con	510	-
Layland D.	LD	474	-
Richards S. Ms.	Lab	260	18.5
		Turnout	46.6 3.1

Central (1826)			
		vote	share
McGrother J. Ms.*	Lab	345	50.4
Norman W.	Con	259	37.9
Iredale R.	LD	80	11.7
		Turnout	37.5 12.6

Chapel East (1490)			
		vote	share
Prime N.	Lab	215	40.9
Tomlin D.	LD	213	40.5
Fletcher G.	Con	98	18.6
		Turnout	35.4 0.4

Chapel West (3491) ²			
		vote	share
Bingham A.	Con	551	32.4
Norton T.	Lab	530	31.2
Harrison F.*	Ind	495	29.2
Harris G. Ms.	Lab	435	-
El Hasan H.	Con	255	-
Debes A.	LD	122	7.2
Boore A.	LD	116	-
		Turnout	38.3 1.2

College (2736) ²			
		vote	share
Corrigan T.*	Con	739	52.3
Kirk G. Ms.	Con	712	-
Bisknell M.	Lab	387	27.4
Weaver C.	LD	286	20.3
		Turnout	43.9 24.9

Corbar (2834) ²			
		vote	share
Beattie C.	Con	581	49.2
Wells W.	Con	542	-
Hamilton J. Ms.	Lab	378	32.0
Iredale M. Ms.	LD	223	18.9
		Turnout	35.4 17.2

Cote Heath (3619) ²			
		vote	share
Mone P.*	Lab	680	52.2
Wilson J.	Lab	612	-
McDowell D.	Con	334	25.6
De-Silva S. Ms.	Con	318	-
Noble S. Ms.	LD	289	22.2
		Turnout	33.4 26.6

Gamesley (2310) ²			
		vote	share
Francis J.*	Lab	652	89.6
McKeown A.	Lab	549	-
Grundy J. Ms.	LD	76	10.4
		Turnout	31.0 79.1

Hayfield (2136)			
		vote	share
Mellor H.*	Ind	576	60.6
Ayres J. Ms.	Lab	315	33.1
Burfoot A.	LD	60	6.3
		Turnout	44.7 27.4

Ladybower (1328)			
		vote	share
Ollerenshaw S.	Con	320	50.7
Wingfield I.*	Lab	260	41.2
Simm J. Ms.	LD	51	8.1
		Turnout	47.6 9.5

Limestone Peak (1269)			
		vote	share
Udale D.	Con	234	52.3
Bellas G.	Lab	159	35.6
Winter S.	LD	54	12.1
		Turnout	35.2 16.8

New Mills North (4165) ³			
		vote	share
Bickerton R.*	LD	875	39.1
Mycroft L.*	Lab	707	31.6
Dowson L.	Lab	675	-
Barnes C.	Con	654	29.2
Gladding D.	LD	543	-
Bowden Z. Ms.	Con	531	-
Jefcoate T.	LD	502	-
		Turnout	45.6 7.5

New Mills South (3052) ²			
		vote	share
Huddlestone I.	Lab	571	50.5
Williams M. Ms.	Lab	559	-
Brindley W.	LD	412	36.5
Dearden S.	LD	331	-
Saunders C.	Con	147	13.0
		Turnout	37.2 14.1

Peeveril (1599)			
		vote	share
Priestley R.*	Con	457	53.4
Skelton T.	Lab	284	33.2
Challand D. Ms.*	LD	115	13.4
		Turnout	54.1 20.2

Simmondley (2186)			
		vote	share
Hadfield-Howse R.	LD	444	50.2
Oakley G.*	Lab	233	26.3
Webster C.	Con	208	23.5
		Turnout	40.5 23.8

St. Andrews (3210) ²			
		vote	share
Hallsworth J.*	Lab	639	58.3
Garlick N.*	Lab	626	-
Foote M. Ms.	Con	240	21.9
Cotter N.	LD	217	19.8
		Turnout	31.7 36.4

St. Charles (3654) ²			
		vote	share
Carr C. Ms.	Lab	579	56.3
Francis G. Ms.*	Lab	532	-
Curzon D.	LD	226	22.0
Foote S.	Con	223	21.7
		Turnout	25.7 34.3

St. James (4366) ³			
		vote	share
Wilkinson J. Ms.*	Lab	777	45.4
Claff G.	Lab	760	-
Gilbert A.*	Lab	750	-
Wharmby G.	Con	562	32.8
Baldry R.	Con	450	-
Clark S. Ms.	LD	374	21.8
Griffiths R. Ms.	LD	253	-
		Turnout	33.9 12.6

St. Johns (2052)			
		vote	share
Worrall A. Ms.*	Con	411	47.1
Harbut C.	LD	359	41.1
Keelan P.	Lab	103	11.8
		Turnout	42.7 6.0

Stone Bench (2572) ²			
		vote	share
Bisknell C. Ms.	Lab	583	69.1
Wilson B. Ms.	Lab	554	-
Byatte R. Ms.	Con	213	25.2
Hopkins A. Ms.	Con	189	-
Wild M. Ms.	LD	48	5.7
		Turnout	32.6 43.8

Tintwistle (1106)			
		vote	share
Brocklehurst J. Ms.*	Lab	233	55.9
Moss N.	Con	157	37.6
Harbut M. Ms.	LD	27	6.5
		Turnout	37.8 18.2

Whaley Bridge (4872) ³			
		vote	share
Lomax D.*	LD	1,117	36.4
Pritchard J.*	Ind	943	30.7
Playford H.*	Lab	745	24.3
Horsfall J. Ms.	Lab	734	-
Kaufman L. Ms.	LD	712	-
Leather L. Ms.	Ind	696	-
Thomas M.	Con	262	8.5
		Turnout	41.7 5.7

High Peak - 2003

Barms (1531)

		vote	share
Hawkins D.	Ind	354	69.3
Wilson J.*	Lab	157	30.7
Turnout		33.5	38.6

Blackbrook (3079)²

		vote	share
Pearson C.	Con	739	51.4
Hallsworth B.*	LD	557	38.7
Flanagan J. Ms.	LD	521	-
Ashton A.	Con	434	-
Richards S. Ms.	Lab	143	9.9
Turnout		43.6	12.6

Burbage (1508)

		vote	share
Faulkner J.	Con	324	56.8
Shepherd B.	LD	171	30.0
Crespin P.	Lab	75	13.2
Turnout		37.8	26.8

Buxton Central (3019)²

		vote	share
McGrother J. Ms.*	Lab	398	39.0
Martin N. Ms.	Lab	362	-
Salt B.	Con	334	32.7
Bibby H.	Con	314	-
Godwin M.	LD	289	28.3
Webb M.	LD	246	-
Turnout		35.5	6.3

Chapel East (1698)

		vote	share
Harrison M.	LD	270	43.7
Prime N.*	Lab	212	34.3
Varnouse N. Ms.	Con	136	22.0
Turnout		36.5	9.4

Chapel West (3295)²

		vote	share
Bingham A.*	Con	567	39.4
Norton T.*	Lab	456	31.7
Young S.	Con	452	-
Ashenden P.	LD	416	28.9
Turnout		35.7	7.7

Corbar (2836)²

		vote	share
Beattie C.*	Con	454	44.6
Wells W.*	Con	443	-
Bain M.	LD	312	30.6
Brett C.	Lab	252	24.8
Turnout		33.0	13.9

Cote Heath (2965)²

		vote	share
Mone A. Ms.	Lab	418	55.0
Hamilton I.	Lab	386	-
Hopkins A. Ms.	Con	342	45.0
Birch A.	Con	326	-
Turnout		49.8	10.0

Dinting (1473)

		vote	share
Hopkins K. Ms.	Con	352	54.8
Hastings-Asatourian B. Ms.	Lab	175	27.3
Kuppan G.	LD	115	17.9
Turnout		44.0	27.6

Gamesley (1749)

		vote	share
McKeown A.*	Lab	0	0.0
Turnout		0.0	0.0

Hadfield North (1441)

		vote	share
Mann V. Ms.	Lab	0	0.0
Turnout		0.0	0.0

Hadfield South (3364)²

		vote	share
McKeown R.	Lab	489	58.1
Rose I.	Lab	482	-
Footo M. Ms.	Con	352	41.9
Footo S.	Con	345	-
Turnout		27.0	16.3

Hayfield (1608)

		vote	share
Mellor H.*	Ind	468	65.5
Ayres J. Ms.	Lab	247	34.5
Turnout		45.0	30.9

Hope Valley (3163)²

		vote	share
Priestley R.*	Con	749	48.3
Walton F.	Con	579	-
Johnson J.	LD	432	27.9
Skelton F. Ms.	Lab	369	23.8
Turnout		41.7	20.5

Howard Town (3160)²

		vote	share
Wilkinson J. Ms.*	Lab	400	34.1
Adderley R.	Lab	399	-
Whitehead A. Ms.	Gloss Ind	383	32.7
Wharmby J. Ms.	Con	258	22.0
Littlefield M. Ms.	Soc All	132	11.3
Turnout		30.6	1.4

Limestone Peak (1717)

		vote	share
Udale D.*	Con	310	55.9
Harris G. Ms.	Lab	245	44.1
Turnout		33.0	11.7

New Mills East (2991)²

		vote	share
Williams M. Ms.*	Lab	359	44.0
Huddleston I.*	Lab	337	-
Dearden S.	LD	230	28.2
Jefcoate T.	LD	191	-
Saunders C.	Con	179	21.9
McDowell G. Ms.	Con	156	-
McGlynn D.	Soc All	48	5.9
Turnout		29.0	15.8

New Mills West (3206)²

		vote	share
Atkins R.	LD	592	45.1
Fletcher I.	LD	576	-
Barrow A.	Lab	312	23.8
Dowson L.*	Lab	305	-
Bowers A.	Con	290	22.1
McDowell D.	Con	176	-
Brook P.	Soc All	118	9.0
Turnout		39.4	21.3

Old Glossop (3204)²

		vote	share
Bell I.	Ind	530	32.4
Webster C.	Gloss Ind	460	28.1
Johnstone N.	Gloss Ind	362	-
Oakley G.	Lab	345	21.1
Wharmby G.	Con	303	18.5
Wilkinson R.*	Lab	285	-
Goodall N. Ms.	Con	172	-
Turnout		42.8	4.3

Padfield (1929)

		vote	share
Wilcox D.	Lab	221	44.2
Beale L. Ms.	Gloss Ind	158	31.6
Evans T.	Con	121	24.2
Turnout		26.4	12.6

Sett (1630)

		vote	share
Barnes C.	Con	360	54.9
Bull J.	Lab	193	29.4
Hodgson E. Ms.	Ind	103	15.7
Turnout		40.7	25.5

Simmondley (3456)²

		vote	share
Urquhart P.	LD	564	40.8
Hyde J.	Lab	446	32.2
Richardson A.	Con	373	27.0
Moore T. Ms.	Con	205	-
Turnout		31.0	8.5

St. Johns (1493)

		vote	share
Worrall A. Ms.*	Con	432	76.5
Smart A.	Lab	133	23.5
Turnout		38.4	52.9

Stone Bench (3142)²

		vote	share
Bisknell C. Ms.*	Lab	451	61.0
Wilson B. Ms.*	Lab	414	-
Byatte R. Ms.	Con	288	39.0
Hopkins G.	Con	259	-
Turnout		24.3	22.1

Temple (1563)

		vote	share
Kirk G. Ms.*	Con	472	70.0
Michaelis J.	Lab	202	30.0
Turnout		44.0	40.1

Tintwistle (1670)

		vote	share
Brocklehurst J. Ms.*	Lab	265	46.3
Steele C.	Ind	159	27.8
Moss N.	Con	148	25.9
Turnout		34.4	18.5

Whaley Bridge (4919)³

		vote	share
Lomax D.*	LD	1,272	37.0
Pritchard J.*	Ind	1,185	34.5
Leather L. Ms.	LD	1,109	-
Playford H.*	Lab	636	18.5
Gregory D.	Con	345	10.0
Richards D.	Con	299	-
Turnout		40.3	2.5

Whitfield (1608)

		vote	share
Wilcox L.	Gloss Ind	278	51.4
Collard P.	Lab	220	40.7
Burford J. Ms.	Soc All	43	7.9
Turnout		33.8	10.7

High Peak - 2007

Barms (1544)

		vote	share
Barratt B.	Con	228	42.9
Quinn R. Ms.	Lab	224	42.1
Robinson			
Moss E. Ms.	LD	80	15.0
Turnout		34.6	0.8

Blackbrook (3150)²

		vote	share
Pearson C.*	Con	959	59.6
Bingham T.	Con	782	-
Ashenden P.	LD	649	40.4
Waters S.	LD	470	-
Turnout		47.6	19.3

Burbage (1530)			
		vote	share
Faulkner J.*	Con	460	78.4
Farmer J.	Lab	127	21.6
	Turnout	38.8	56.7
Buxton Central (3063)²			
		vote	share
Davey J.	Con	470	38.8
Fiddy B.	Con	462	-
Godwin M.	LD	384	31.7
Hardy L. Ms.	LD	363	-
McGrother J. Ms.*	Lab	356	29.4
Mone P.	Lab	304	-
	Turnout	39.8	7.1
Chapel East (1767)			
		vote	share
Harrison M.*	LD	280	42.7
Buffrey D.	Con	266	40.5
Ollier F.	Lab	110	16.8
	Turnout	37.5	2.1
Chapel West (3280)²			
		vote	share
Bingham A.*	Con	764	41.6
Young S.	Con	473	-
Norton T.*	Lab	438	23.8
Harrison P.	Ind	344	18.7
Bayirli D. Ms.	LD	291	15.8
Hallsworth B.	LD	175	-
	Turnout	42.3	17.7
Corbar (2853)²			
		vote	share
Baldry L. Ms.	Con	623	48.3
Kemp T.	Con	569	-
Brett C.	Lab	243	18.8
Wells W.*	Ind	216	16.7
Weaver C.	LD	208	16.1
	Turnout	42.6	29.5
Cote Heath (3010)²			
		vote	share
Baldry R.	Con	540	48.2
Morris B.	Con	538	-
Mone A. Ms.*	Lab	395	35.2
Thomas M.	Lab	305	-
Dunscombe K.	LD	186	16.6
	Turnout	35.2	12.9
Dinting (1487)			
		vote	share
Wharmby J. Ms.	Con	454	58.6
McMeekin S.	Lab	124	16.0
Ellison-Reed P.	Green	85	11.0
Perry M.	Ind	63	8.1
Fletcher I.	LD	49	6.3
	Turnout	52.2	42.6
Gamesley (1712)			
		vote	share
McKeown A.*	Lab	249	57.6
Cunningham R.	Ind	145	33.6
Boardman G.	LD	38	8.8
	Turnout	25.5	24.1
Hadfield North (1459)			
		vote	share
Mann V. Ms.*	Lab	226	48.7
Kelly D.	Con	149	32.1
Batey S. Ms.	LD	89	19.2
	Turnout	31.9	16.6
Hadfield South (3373)²			
		vote	share
McKeown R.*	Lab	455	35.5
Foote M. Ms.	Con	433	33.8
Foote S.	Con	430	-
Siddall E.	Lab	381	-
Hargreaves M. Ms.	LD	252	19.7
Spilsbury A.	Ind	141	11.0
	Turnout	33.8	1.7

Hayfield (1645)			
		vote	share
Mellor H.*	Ind	0	0.0
	Turnout	0.0	0.0
Hope Valley (3195)²			
		vote	share
Favell T.	Con	925	61.5
Walton J.	Con	784	-
Simm J. Ms.	LD	579	38.5
	Turnout	45.5	23.0
Howard Town (3143)²			
		vote	share
Wilkinson J. Ms.*	Lab	523	44.9
Wilkinson R.	Lab	467	-
Wharmby G.	Con	341	29.3
Beard P.	LD	301	25.8
McDowell D.	Con	217	-
	Turnout	34.0	15.6
Limestone Peak (1689)			
		vote	share
Udale D.*	Con	365	58.0
Scott G.	LD	264	42.0
	Turnout	37.7	16.1
New Mills East (3160)²			
		vote	share
Gadd M.	LD	508	40.4
Huddleston I.*	Lab	488	38.9
Stevens A.	LD	476	-
Barrow A.	Lab	448	-
Longden A. Ms.	Con	260	20.7
	Turnout	37.5	1.6
New Mills West (3345)²			
		vote	share
Atkins R.*	LD	845	46.9
Sharp S.	LD	709	-
Dowson L.	Ind	643	35.7
Clair M. Ms.	Con	313	17.4
	Turnout	41.9	11.2
Old Glossop (3680)²			
		vote	share
Webster C.*	Ind	779	46.6
Bell I.*	Ind	758	-
Novakovic D.	Con	400	23.9
Mellor D.	Lab	333	19.9
Hanell C. Ms.	LD	160	9.6
	Turnout	39.2	22.7
Padfield (2014)			
		vote	share
Kay P.	Con	251	35.0
Smith J.	LD	250	34.8
Wilcox E. Ms.	Lab	217	30.2
	Turnout	35.8	0.1
Sett (1626)			
		vote	share
Ashton T.	Con	299	39.4
Carter J. Ms.	LD	269	35.4
Barrow S. Ms.	Lab	191	25.2
	Turnout	47.0	4.0
Simmondley (3748)²			
		vote	share
Haken J.	Con	728	47.5
Crompton M.	Con	727	-
Robinson A. Ms.	Lab	468	30.5
Kuppan G.	LD	337	22.0
Seaton A. Ms.	LD	326	-
	Turnout	39.2	17.0
St. Johns (1532)			
		vote	share
Worrall A. Ms.*	Con	493	70.6
McKeown R.	Lab	113	16.2
Baxter T.	LD	92	13.2
	Turnout	45.6	54.4

Stone Bench (3160)²			
		vote	share
Bisknell C. Ms.*	Lab	410	41.3
Wilson B. Ms.*	Lab	400	-
Hobdey R.	Con	368	37.1
Bennett L.	Soc Lab	215	21.7
	Turnout	27.6	4.2
Temple (1515)			
		vote	share
Thrane E. Ms.	Con	546	76.8
Dent F.	Lab	165	23.2
	Turnout	47.7	53.6
Tintwistle (1664)			
		vote	share
Mitchell C. Ms.	Con	320	54.9
Brocklehurst J. Ms.*	Lab	263	45.1
	Turnout	35.5	9.8
Whaley Bridge (5091)³			
		vote	share
Pritchard J.*	Ind	1,275	33.6
Lomax D.*	LD	1,237	32.6
Leather L. Ms.*	LD	1,117	-
Boore T.	Con	767	20.2
Brunt M.	Lab	515	13.6
	Turnout	42.5	1.0
Whitfield (1632)			
		vote	share
Oakley G.	Lab	297	52.7
Wharmby D.	Con	135	23.9
Hawley H.	LD	132	23.4
	Turnout	34.6	28.7
High Peak - 2011			
Barms (1565)			
		vote	share
Quinn R. Ms.	Lab	329	57.1
Barratt B.*	Con	247	42.9
	Turnout	37.3	14.2
Blackbrook (3188)²			
		vote	share
Bramah A. Ms.	Con	706	30.6
Pearson C.*	Ind	665	28.8
Longden E. Ms.	LD	644	27.9
Rofer T.	Con	410	-
Beeden L. Ms.	LD	382	-
Forrest P.	Lab	295	12.8
	Turnout	55.1	1.8
Burbage (1951)			
		vote	share
Faulkner J.*	Con	566	66.0
Hamilton I.	Lab	291	34.0
	Turnout	44.6	32.1
Buxton Central (3469)²			
		vote	share
Ashmore P.	Lab	566	41.6
Payne C.	Lab	466	-
Fiddy B.*	Con	455	33.4
Morris B.*	Con	452	-
Bain M.	Green	190	14.0
Ashenden P.	LD	150	11.0
	Turnout	36.2	8.2
Chapel East (1793)			
		vote	share
Perkins J.	Con	294	35.4
Harrison M.*	LD	277	33.4
Morrison M. Ms.	Lab	259	31.2
	Turnout	46.9	2.0

Chapel West (3340) ²			
		vote	share
Norton T.	Lab	721	41.1
Young S.*	Con	718	40.9
Street J. Ms.	Con	697	-
Debes A.	LD	315	18.0
Turnout		47.0	0.2

Corbar (3025) ²			
		vote	share
Baldry L. Ms.*	Con	748	46.2
Kemp T.*	Con	743	-
Thomas M.	Lab	535	33.0
Weaver C.	LD	336	20.8
Turnout		47.2	13.2

Cote Heath (3004) ²			
		vote	share
Stone L. Ms.	Lab	556	51.6
Savage K.	Lab	525	-
Boynnton C.	Con	521	48.4
Grooby L. Ms.	Con	506	-
Turnout		38.6	3.2

Dinting (1514)			
		vote	share
Wharmby J. Ms.*	Con	564	66.2
Hopkins B.	Lab	288	33.8
Turnout		56.9	32.4

Gamesley (1724)			
		vote	share
McKeown A.*	Lab	389	82.2
Evans T.	Con	84	17.8
Turnout		27.9	64.5

Hadfield North (1524)			
		vote	share
Mann V. Ms.*	Lab	317	58.7
Novakovic D.	Con	161	29.8
Storey J.	LD	62	11.5
Turnout		35.5	28.9

Hadfield South (3444) ²			
		vote	share
McKeown R.*	Lab	761	56.0
Siddall E.	Lab	725	-
Foote M. Ms.*	Con	599	44.0
Foote S.	Con	568	-
Turnout		41.6	11.9

Hayfield (1658)			
		vote	share
Mellor H.*	Ind	485	54.3
Atkins B. Ms.	LD	409	45.7
Turnout		54.8	8.5

Hope Valley (3217) ²			
		vote	share
Favell T.*	Con	991	46.2
Walton J.*	Con	799	-
Farrell C. Ms.	Green	634	29.6
Serby M. Ms.	LD	519	24.2
Turnout		55.8	16.7

Howard Town (3273) ²			
		vote	share
Claff G.	Lab	753	54.9
Waude C.	Lab	643	-
Douglas J.	Con	370	27.0
Rowlands W.	Con	326	-
Allen P.	Green	248	18.1
Turnout		40.3	27.9

Limestone Peak (1740)			
		vote	share
Udale D.*	Con	374	52.0
Lamont S.	Lab	224	31.2
Scott G.	LD	121	16.8
Turnout		41.0	20.9

New Mills East (3150) ²			
		vote	share
Huddleston I.*	Lab	565	48.1
Barrow A.	Lab	510	-
Gadd M.*	Con	370	31.5
Bowers G. Ms.	Con	333	-
Stevens A.	LD	239	20.4
Stroner T.	LD	150	-
Turnout		36.5	16.6

New Mills West (3427) ²			
		vote	share
Dowson L.	Lab	648	29.8
Atkins R.*	LD	573	26.4
Gadd J. Ms.	Con	494	22.8
Carter J. Ms.	LD	476	-
Body H. Ms.	Green	456	21.0
Lamb D.	Con	402	-
Turnout		49.2	3.5

Old Glossop (3722) ²			
		vote	share
Parvin G.	Lab	687	33.6
Webster C.*	Ind	686	33.5
Hardy P.	Con	673	32.9
Greenhalgh D.	Lab	653	-
Lawton J.	Con	421	-
Turnout		50.0	0.0

Padfield (2092)			
		vote	share
Wilcox E. Ms.	Lab	354	43.2
Kay P.*	Con	338	41.3
Selwood L.	Green	88	10.7
Batey S. Ms.	LD	39	4.8
Turnout		39.5	2.0

Sett (1665)			
		vote	share
Ashton T.*	Con	396	48.0
Shipley M.	Green	281	34.1
Wild R.	LD	148	17.9
Turnout		50.1	13.9

Simmondley (3749) ²			
		vote	share
Haken J.*	Con	793	48.1
McCabe J. Ms.	Con	663	-
O'Connor R.	Lab	588	35.7
Longos N.	Lab	574	-
Haggart J.	LD	268	16.3
Garbutt A. Ms.	LD	229	-
Turnout		44.3	12.4

St. Johns (1491)			
		vote	share
Wharmby G.	Con	429	62.7
Worrall S.	LD	255	37.3
Turnout		48.7	25.4

Stone Bench (3311) ²			
		vote	share
Bisknell C. Ms.*	Lab	673	65.4
Sloman F. Ms.	Lab	616	-
Reddy M.	Con	356	34.6
Reddy G. Ms.	Con	341	-
Turnout		33.0	30.8

Temple (1513)			
		vote	share
Thrane E. Ms.*	Con	524	65.8
Cooper R.	Lab	272	34.2
Turnout		53.8	31.7

Tintwistle (1677)			
		vote	share
Jenner P.	Lab	393	50.9
Clarke W.	Con	379	49.1
Turnout		46.4	1.8

Whaley Bridge (5159) ³			
		vote	share
Pritchard J.*	Ind	1,286	29.4
Lomax D.*	LD	1,117	25.5
Leather L. Ms.*	LD	1,038	-
Clarke N.	Lab	807	18.4
Gilmour R.	Con	799	18.2
Flower-Eyre S. Ms.	Con	502	-
McDowell D.	Con	423	-
Bush J.	UKIP	371	8.5
Turnout		51.1	3.9

Whitfield (1715)			
		vote	share
Oakley G.*	Lab	442	69.9
Lomas P.	Con	135	21.4
Kuppan G.	LD	55	8.7
Turnout		37.2	48.6

