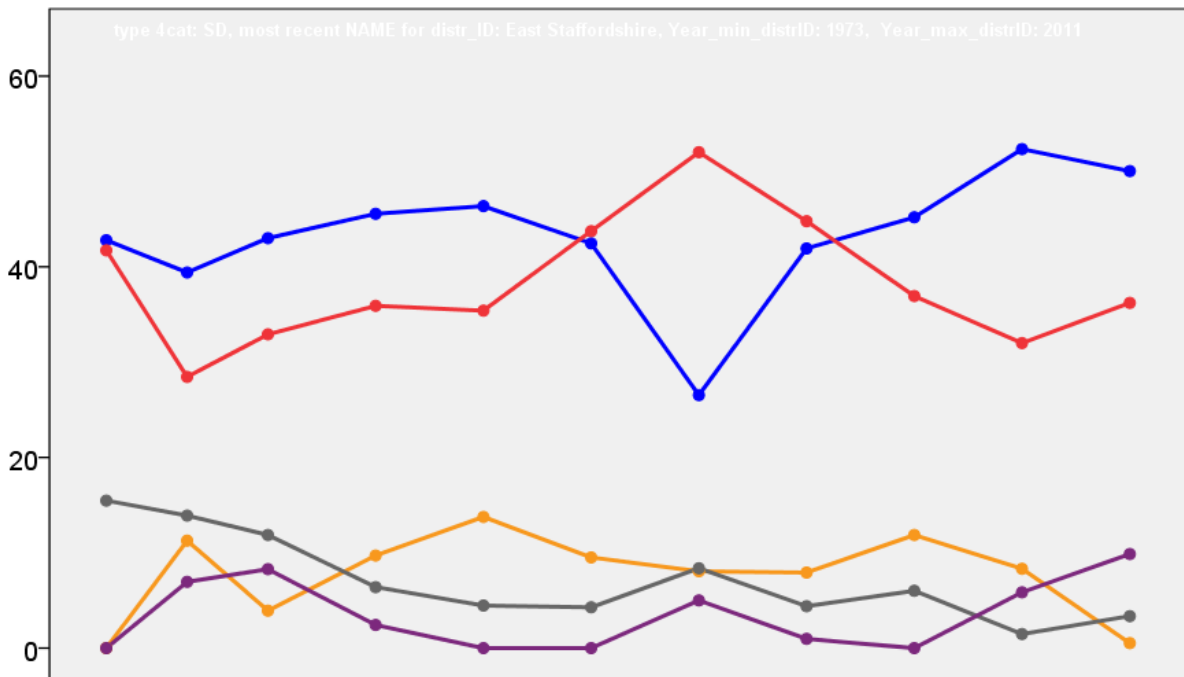


East Staffordshire Borough Council Election Results 1973-2011



Colin Rallings and Michael Thrasher
The Elections Centre
Plymouth University

The information contained in this report has been obtained from a number of sources. Election results from the immediate post-reorganisation period were painstakingly collected by Alan Willis largely, although not exclusively, from local newspaper reports. From the mid-1980s onwards the results have been obtained from each local authority by the Elections Centre. The data are stored in a database designed by Lawrence Ware and maintained by Brian Cheal and others at Plymouth University. Despite our best efforts some information remains elusive whilst we accept that some errors are likely to remain. Notice of any mistakes should be sent to elections@plymouth.ac.uk. The results sequence can be kept up to date by purchasing copies of the annual Local Elections Handbook, details of which can be obtained by contacting the email address above.

Front cover: the graph shows the distribution of percentage vote shares over the period covered by the results. The lines reflect the colours traditionally used by the three main parties. The grey line is the share obtained by Independent candidates while the purple line groups together the vote shares for all other parties.

Rear cover: the top graph shows the percentage share of council seats for the main parties as well as those won by Independents and other parties. The lines take account of any by-election changes (but not those resulting from elected councillors switching party allegiance) as well as the transfers of seats during the main round of local election.

The lower graph shows for each main round of local elections the overall percentage turnout (solid line), the percentage of women candidates standing at (dotted line) and the percentage of women among those elected (hashed line).

East Staffordshire - 1973

Branston (2947)³

		vote	share
Bailey F.	Con	732	75.2
Boulton W.	Con	725	-
Boss J.	Con	654	-
Flaherty L. Ms.	Lab	242	24.8
McKenna J.	Lab	233	-
Turnout		33.1	50.3

Crown (1421)

		vote	share
Porter H.	Ind	360	57.4
Cawser T.	Ind	267	42.6
Turnout		44.1	14.8

Heath (4358)⁴

		vote	share
Badgery J.	Ind	629	52.4
Barker R.	Ind	580	-
Gallimore O. Ms.	Ind	571	-
Dean A.	Lab	571	47.6
Hancox T.	Lab	437	-
Hetherington G.	Ind	415	-
Turnout		27.5	4.8

Needwood (3399)³

		vote	share
Ball A. Ms.	Con	637	51.2
Bailey N.	Con	624	-
Potter P.	Ind	606	48.8
Langston S.	Con	296	-
Turnout		36.6	2.5

No. 1 (Burton: Broadway) (2838)³

		vote	share
Buckingham H.	Lab	630	65.6
Colaluca B.	Lab	620	-
Colaluca M. Ms.	Lab	602	-
Mandley A.	Con	331	34.4
Adams N. Ms.	Con	326	-
Mandley J. Ms.	Con	304	-
Turnout		33.9	31.1

No. 18 (Abbotts Bromley) (1177)

		vote	share
Robertson R.	Con	431	67.2
Taylor T.	Lab	210	32.8
Turnout		54.5	34.5

No. 19 (Denstone) (1212)

		vote	share
Bailey W.	Ind	280	99.6
Green C.	Ind	1	0.4
Turnout		23.2	99.3

No. 2 (Burton: Burton) (992)

		vote	share
Furniss D.	Ind	261	64.9
Hancox P. Ms.	Lab	141	35.1
Turnout		40.5	29.9

No. 21 (Mayfield) (1087)

		vote	share
Hanbury W.	Ind	0	0.0
Turnout		0.0	0.0

No. 22 (Rocester) (1212)

		vote	share
Thornton D. Ms.	Lab	0	0.0
Turnout		0.0	0.0

No. 23 (Leigh) (885)

		vote	share
Capewell N.	Ind	266	50.1
Peirson H.	Ind	224	42.2
Colman J.	Lab	41	7.7
Turnout		60.0	7.9

No. 24 (Uttoxeter Rural) (791)

		vote	share
Langridge H.	Ind	0	0.0
Turnout		0.0	0.0

No. 3 (Burton: Horninglow) (7054)⁶

		vote	share
Haynes P.	Lab	1,431	61.8
Haynes G. Ms.	Lab	1,406	-
Wood C.	Lab	1,401	-
Heptonstall D.	Lab	1,388	-
Callister G.	Lab	1,356	-
Luther E.	Lab	1,352	-
Huckerby K. Ms.	Con	884	38.2
Foster G. Ms.	Con	882	-
Danks M. Ms.	Con	857	-
Dawson H.	Con	845	-
Cooper J.	Con	840	-
Makin D.	Con	813	-
Turnout		32.8	23.6

No. 5 (Burton: Stapenhill) (8256)⁷

		vote	share
Young L.	Lab	1,459	54.9
Torr H.	Lab	1,435	-
Bray D.	Lab	1,423	-
Howlett M. Ms.	Lab	1,383	-
Myatt A.	Lab	1,373	-
Price E.	Lab	1,369	-
Raynor W.	Lab	1,263	-
Handley G.	Con	1,197	45.1
Handley M. Ms.	Con	1,182	-
Insley C.	Con	1,130	-
Blake M. Ms.	Con	1,124	-
Mills R.	Con	1,124	-
Wheeler R.	Con	1,087	-
Hunter K.	Con	1,083	-
Turnout		32.2	9.9

No. 6 (Burton: Uxbridge) (2848)³

		vote	share
Pritchard G. Ms.	Lab	0	-
Pritchard H.	Lab	0	-
O'Shea C.	Lab	0	0.0
Turnout		0.0	0.0

No. 8 (Burton: Winshill & Wetmore) (6590)⁵

		vote	share
Plant E.	Con	1,227	52.3
Caulton H.	Con	1,206	-
Hurdle M. Ms.	Con	1,156	-
Roberts T.	Con	1,152	-
Warner J.	Con	1,127	-
Rackham N. Ms.	Lab	1,121	47.7
Chater J.	Lab	1,121	-
Fletcher D.	Lab	1,120	-
Roe P. Ms.	Lab	1,120	-
Dolan E.	Lab	1,064	-
Turnout		35.6	4.5

Outwoods (2189)²

		vote	share
Burman W.	Con	575	61.0
Walton W. Ms.	Con	566	-
Broadhurst A. Ms.	Lab	188	20.0
Smith M. Ms.	Ind	179	19.0
Turnout		43.0	41.1

Rolleston On Dove (2541)²

		vote	share
Layden E. Ms.	Con	710	63.6
Newbury F.	Con	622	-
Hall K. Ms.	Lab	407	36.4
Insley D. Ms.	Lab	376	-
Turnout		44.0	27.1

Shobnall (2908)²

		vote	share
Mottram E.	Lab	513	50.5
Parsons N.	Con	503	49.5
Bradbury T.	Con	496	-
Rodger W.	Lab	449	-
Turnout		34.9	1.0

Stretton (3052)³

		vote	share
Wyatt A.	Con	0	0.0
Hunter G. Ms.	Con	0	-
Howson C.	Con	0	-
Turnout		0.0	0.0

Town (2296)²

		vote	share
Stanway J.	Ind	0	-
Tunncliffe C.	Ind	0	0.0
Turnout		0.0	0.0

Tutbury & Hanbury (2442)²

		vote	share
Crossley W.	Lab	583	53.2
Brown D. Ms.	Con	512	46.8
Shilton W.	Con	506	-
Morris J.	Lab	439	-
Turnout		44.8	6.5

Victoria (3908)⁴

		vote	share
Parker J.	Con	759	50.3
Gibbs B.	Lab	750	49.7
Fidler M.	Con	749	-
Price A.	Lab	728	-
Adams F.	Con	718	-
Townsend C.	Con	675	-
Smith D.	Lab	651	-
Sutton A.	Lab	625	-
Turnout		38.6	0.6

Yoxall (1322)

		vote	share
Blood G.	Ind	0	0.0
Turnout		0.0	0.0

East Staffordshire - 1976

Branston (3087)³

		vote	share
Bailey F.	Con	800	53.8
Vickers R.	Con	749	-
Boss J.	Con	722	-
Smith F.	Lab	353	23.7
Jones C.	Lib	335	22.5
Turnout		40.9	30.0

Crown (1651)

		vote	share
Porter H.	Ind	0	0.0
Turnout		0.0	0.0

Heath (4611)⁴

		vote	share
Badgery J.	Ind	890	56.7
Kenny J.	Ind	814	-
Gallimore O. Ms.	Ind	701	-
Barker R.	Ind	561	-
Barry S.	Lib	340	21.7
Dean A.	Lab	339	21.6
Bluck E. Ms.	Ind	329	-
Edginton F.	Lab	328	-
Bettany A.	Ind	270	-
Turnout		38.1	35.1

Needwood (3380)³

		vote	share
Ball A. Ms.	Con	807	32.9
Deeming T.	Con	762	-
Pugh K.	Con	741	-
Ball D.	Ind	632	25.8
Monks F.	?	622	25.4
Dixon A.	Lib	390	15.9
Turnout		45.4	7.1

No. 1 (Burton: Broadway) (2808) ³			
		vote	share
Blant E.	Con	544	44.3
Buckingham H.	Lab	539	43.9
Harrison D.	Con	451	-
Jones D.	Con	394	-
Wicker R.	Lab	387	-
Hancox P.	Lab	384	-
Archer P.	Lib	146	11.9
Turnout		41.3	0.4

No. 18 (Abbotts Bromley) (1251)			
		vote	share
Robertson R.	Con	593	78.6
Lowe R.	Lab	161	21.4
Turnout		60.9	57.3

No. 19 (Denstone) (1233)			
		vote	share
Bailey W.	Con	0	0.0
Turnout		0.0	0.0

No. 2 (Burton: Burton) (868)			
		vote	share
Furniss D.	Ind	235	77.3
Flaherty L. Ms.	Lab	69	22.7
Turnout		35.4	54.6

No. 21 (Mayfield) (1066)			
		vote	share
Hanbury J. Ms.	Ind	285	53.9
Eve R. Ms.	Con	244	46.1
Turnout		49.8	7.8

No. 22 (Rocester) (1220)			
		vote	share
Hirst R.	Lab	347	53.3
Bebbington E.	Ind	304	46.7
Turnout		54.3	6.6

No. 23 (Leigh) (928)			
		vote	share
Capewell N.	Ind	408	77.9
Gagan P.	Lib	116	22.1
Turnout		58.2	55.7

No. 24 (Uttoxeter Rural) (899)			
		vote	share
Langridge H.	Con	0	0.0
Turnout		0.0	0.0

No. 3 (Burton: Horninglow) (6947) ⁶			
		vote	share
Haynes P.	Lab	1,368	46.7
Callister G.	Lab	1,315	-
Heptonstall D.	Lab	1,256	-
Hulme R.	Lab	1,248	-
Toogood P. Ms.	Lab	1,243	-
Wood C.	Lab	1,220	-
Curtis H.	Con	1,128	38.5
Foster G. Ms.	Con	1,122	-
Huckerby K. Ms.	Con	1,099	-
Lunn L. Ms.	Con	1,082	-
Corke N.	Con	1,078	-
Arnold J.	Con	1,000	-
Taylor G.	Lib	431	14.7
Turnout		40.0	8.2

No. 5 (Burton: Stapenhill) (8390) ⁷			
		vote	share
Glick S.	Con	1,423	31.9
Handley G.	Con	1,407	-
Cullen J. Ms.	Con	1,338	-
Handley M. Ms.	Con	1,334	-
Young L.	Lab	1,305	29.2
Court P. Ms.	Con	1,214	-
Norris P.	Con	1,208	-
Hill P. Ms.	Lab	1,182	-
Price E.	Lab	1,174	-
Drummond E.	Lab	1,162	-
Neale D.	Res	1,117	25.0
Hancox T.	Lab	1,101	-
Roe P. Ms.	Lab	1,069	-
Ingram F.	Lab	1,067	-
Pope V.	Lib	619	13.9
Turnout		38.0	2.6

No. 6 (Burton: Uxbridge) (2751) ³			
		vote	share
Pritchard G. Ms.	Lab	516	69.4
O'Shea C.	Lab	483	-
Pritchard H.	Lab	477	-
Reed G.	Ind	228	30.6
Turnout		32.1	38.7

No. 8 (Burton: Winshill & Wetmore) (6626) ⁵			
		vote	share
Caulton H.	Con	1,569	54.5
Hurdle M. Ms.	Con	1,537	-
Plant E.	Con	1,529	-
Warner J.	Con	1,448	-
Swiggs R.	Con	1,424	-
Chater J.	Lab	873	30.3
Bentley J. Ms.	Lab	864	-
Raynor W.	Lab	849	-
Bell J. Ms.	Lab	844	-
Fox E.	Lab	843	-
Wain K.	Lib	438	15.2
Turnout		41.2	24.2

Outwoods (2172) ²			
		vote	share
Walton W. Ms.	Con	0	0.0
Gowtage C.	Con	0	-
Turnout		0.0	0.0

Rolleston On Dove (2509) ²			
		vote	share
Bradley K.	Con	927	75.5
Layden E. Ms.	Con	901	-
Morris J.	Lab	301	24.5
Green K.	Lab	293	-
Turnout		51.5	51.0

Shobnall (2809) ²			
		vote	share
Parsons N.	Con	606	54.4
Haynes G. Ms.	Con	573	-
Illsley G.	Lab	507	45.6
Wright T.	Lab	419	-
Turnout		41.8	8.9

Stretton (3074) ³			
		vote	share
Hunter G. Ms.	Con	945	67.2
Harlow J.	Con	865	-
Wyatt A.	Con	850	-
Harvey J.	Lab	461	32.8
Cooper C.	Lab	430	-
Turnout		48.6	34.4

Town (2219) ²			
		vote	share
Stanway J.	Ind	704	70.3
Miln P.	Lib	297	29.7
Tunncliffe C.	Ind	260	-
Turnout		41.5	40.7

Tutbury & Hanbury (2465) ²			
		vote	share
Brown D. Ms.	Con	775	52.6
Shilton W.	Con	773	-
Crossley W.	Lab	697	47.4
Willis D.	Lab	549	-
Turnout		61.5	5.3

Victoria (3913) ⁴			
		vote	share
Parker J.	Con	839	50.7
Peeverell B. Ms.	Con	751	-
Makin D.	Con	694	-
Heppel-Mooney P.	Con	628	-
Gibbs B.	Lab	590	35.6
Price A.	Lab	584	-
Walker F.	Lab	556	-
Baker J. Ms.	Lab	530	-
Chatfield G.	Lib	227	13.7
Turnout		43.0	15.0

Yoxall (1391)			
		vote	share
Gregory R.	Con	468	52.6
Hart J.	Rate	320	36.0
Blood G.	Ind	102	11.5
Turnout		63.6	16.6

East Staffordshire - 1979

Abbey (1706)			
		vote	share
Capewell N.	Ind	0	0.0
Turnout		0.0	0.0

Bagots (1754)			
		vote	share
Robertson R.	Con	0	0.0
Turnout		0.0	0.0

Branston (3392) ²			
		vote	share
Vickers R.	Con	1,423	53.2
Boss J.	Con	1,377	-
Bailey F.	Ind	1,251	46.8
Turnout		75.9	6.4

Broadway (2965) ²			
		vote	share
Blant E.	Con	1,016	50.5
Smith F.	Lab	994	49.5
Wood E. Ms.	Lab	839	-
Harrison D.	Con	785	-
Turnout		72.3	1.1

Burton (1376)			
		vote	share
Furniss D.	Ind	331	37.4
Lowe A.	Con	303	34.2
Winfield T.	Lab	252	28.4
Turnout		65.2	3.2

Churnet (1905)			
		vote	share
Ratcliffe W.	Con	742	48.7
Hirst R.	Lab	480	31.5
Belfield J.	Ind	302	19.8
Turnout		80.9	17.2

Crown (1686)			
		vote	share
Porter H.	Ind Con	744	56.5
Cullen J. Ms.	Con	573	43.5
Turnout		77.6	13.0

Edgehill (3195) ²			
		vote	share
Hill P. Ms.	Lab	1,186	51.9
Watts R.	Lab	1,114	-
Handley M. Ms.	Con	1,097	48.1
Norris P.	Con	782	-
Turnout		74.5	3.9

Eton (2995) ²			
		vote	share
Haynes P.	Lab	1,259	63.0
Callister G.	Lab	1,146	-
Curtis H.	Con	738	37.0
Cooper R.	Con	636	-
Turnout		74.6	26.1

Heath (4363) ³			
		vote	share
Badgery J.	Ind	1,751	34.0
Edginton F.	Lab	1,278	24.8
Barry S.	Lib	1,064	20.7
Ward D.	Con	1,052	20.4
Wickham J. Ms.	Con	802	-
Turnout		75.9	9.2

Horninglow (4576) ³			
		vote	share
Hulme R.	Lab	1,641	40.2
Oldham T.	Lab	1,323	-
Fellows B. Ms.	Con	1,308	32.0
Anderson T.	Con	1,277	-
Wright T.	Lab	1,237	-
Peeverell A.	Ind Con	1,133	27.8
Taylor P.	Con	1,125	-
Turnout		77.2	8.2

Needwood (3729) ²			
		vote	share
Deeming T.	Ind Con	1,537	42.0
Ball A. Ms.	Con	1,453	39.7
Lloyd-Morris M.	Con	1,285	-
Mott J.	Lab	667	18.2
Turnout		78.1	2.3

Outwoods (2179) ²			
		vote	share
Gowtage C.	Con	1,193	70.1
Makin D.	Con	1,104	-
Mott J. Ms.	Lab	509	29.9
Turnout		78.5	40.2

Rolleston On Dove (2583) ²			
		vote	share
Layden E. Ms.	Con	0	0.0
Bradley K.	Con	0	-
Turnout		0.0	0.0

Shobnall (2913) ²			
		vote	share
Beresford P.	Lab	1,029	51.4
Price A.	Lab	1,011	-
Haynes G. Ms.	Con	972	48.6
Parsons N.	Con	927	-
Turnout		54.5	2.8

Stapenhill (3396) ²			
		vote	share
Handley G.	Con	1,380	44.0
Hurdle M. Ms.	Con	1,351	-
Neale D.	Res	976	31.1
Hopper J. Ms.	Lab	779	24.8
Turnout		76.6	12.9

Stretton (3129) ²			
		vote	share
Hunter G. Ms.	Con	1,506	61.2
Wyatt A.	Con	1,329	-
Harvey J.	Lab	954	38.8
King R.	Lab	846	-
Turnout		82.6	22.4

Town (3174) ²			
		vote	share
Gallimore O. Ms.	Con	1,047	33.9
Barker R.	Ind	1,024	33.2
Miln P.	Lib	1,017	32.9
Tunncliffe C.	Con	724	-
Turnout		69.9	0.7

Tutbury & Hanbury (2715) ²			
		vote	share
Shilton W.	Con	1,286	56.5
Brown D. Ms.	Con	1,149	-
Crossley W.	Lab	990	43.5
Morris D.	Lab	890	-
Turnout		83.1	13.0

Uxbridge (2232) ²			
		vote	share
O'Shea C.	Lab	933	53.1
Baker J. Ms.	Lab	703	-
Holford F.	Con	493	28.1
Stephens B.	Ind	331	18.8
Turnout		68.4	25.0

Victoria (3425) ²			
		vote	share
Walker F.	Lab	1,076	51.3
Parker J.	Con	1,022	48.7
Peeverell B. Ms.	Con	956	-
Wood C.	Lab	903	-
Turnout		69.8	2.6

Waterside (3322) ²			
		vote	share
Heptonstall D.	Lab	1,409	51.0
Watts R. Ms.	Lab	1,224	-
Insley C.	Con	728	26.3
Young L.	Ind	626	22.7
Turnout		71.5	24.6

Weaver (1562)			
		vote	share
Hanbury J. Ms.	Ind	673	52.7
Bailey W.	Con	604	47.3
Turnout		81.9	5.4

Winshill (5312) ³			
		vote	share
Caulton H.	Con	1,881	51.5
Brinkworth K.	Lab	1,773	48.5
Clarke K.	Con	1,672	-
Pride R.	Lab	1,639	-
Harrison T.	Lab	1,639	-
Warner E. Ms.	Con	1,637	-
Turnout		73.4	3.0

Yoxall (1460)			
		vote	share
Gregory R.	Con	974	80.9
Allen C. Ms.	Lab	230	19.1
Turnout		80.9	61.8

East Staffordshire - 1983

Abbey (1771)			
		vote	share
Capewell N.	Ind	355	80.1
Dickin C. Ms.	Ind	88	19.9
Turnout		25.0	60.3

Bagots (1864)			
		vote	share
Robertson R.	Con	757	89.7
Pidgeon B.	Lab	87	10.3
Turnout		45.3	79.4

Branston (3401) ²			
		vote	share
Boss M. Ms.	Con	920	56.4
Welton S.	Con	876	-
Jones C.	Lib/SDP	409	25.1
Radley A. Ms.	Lib/SDP	350	-
Jones C.	Lab	301	25.1
Jones G.	Lab	260	-
Turnout		47.9	31.3

Broadway (3078) ²			
		vote	share
Smith F.	Lab	559	39.3
Blant E.	Con	513	36.1
Harroon M.	Lab	429	-
Mosey S. Ms.	Con	392	-
Bristow S. Ms.	Lib/SDP	351	24.7
Warner H.	Lib/SDP	309	-
Turnout		46.2	3.2

Burton (1070)			
		vote	share
Perry P. Ms.	Lab	259	61.1
Furniss D.	Ind	92	21.7
Peeverell B. Ms.	Con	73	17.2
Turnout		39.6	39.4

Churnet (1957)			
		vote	share
Ratcliffe W.	Con	660	69.9
Hirst R.	Lab	284	30.1
Turnout		48.2	39.8

Crown (1734)			
		vote	share
Porter H.	Ind	0	0.0
Turnout		0.0	0.0

Edgehill (3162) ²			
		vote	share
Hill P. Ms.	Lab	824	60.5
Watts R.	Lab	798	-
Anderson T.	Con	538	39.5
Cooper R.	Con	530	-
Turnout		43.1	21.0

Eton (3128) ²			
		vote	share
Haynes P.	Lab	885	71.0
Callister G.	Lab	801	-
Lloyd-Morris M.	Con	362	29.0
Turnout		39.9	41.9

Heath (4567) ³			
		vote	share
Badgery J.	Lab	1,065	59.9
Edginton F.	Lab	891	-
Dean A.	Lab	885	-
Tunncliffe D. Ms.	Con	712	40.1
Moore I. Ms.	Con	569	-
O'Neill F. Ms.	Con	537	-
Turnout		38.9	19.9

Horninglow (4797) ³			
		vote	share
Eason G.	Lab	1,050	50.2
Baker J. Ms.	Lab	994	-
Deakin E.	Lab	906	-
Huckerby W.	Con	795	38.0
Fellows B. Ms.	Con	761	-
Fern L.	Con	729	-
Hogg M. Ms.	Lib/SDP	246	11.8
Lorrinan K.	Lib/SDP	223	-
Turnout		43.6	12.2

Needwood (3833) ²			
		vote	share
Ball A. Ms.	Con	1,067	39.2
Deeming T.	Ind Con	831	30.6
Kennedy A.	Ind	514	18.9
Beresford P.	Lab	308	11.3
Turnout		71.0	8.7

Outwoods (2142)²			
		vote	share
Gowtage C.	Con	797	76.1
Makin D.	Con	717	-
Mott J. Ms.	Lab	250	23.9
Jones J. Ms.	Lab	195	-
Turnout		48.9	52.2

Rolleston On Dove (2753)²			
		vote	share
Bradley K.	Con	799	49.0
Rice G.	Con	750	-
Trelinski M.	Lib/SDP	600	36.8
Gordon D.	Lib/SDP	470	-
Piggs A.	Lab	230	14.1
Turnout		59.2	12.2

Shobnall (3246)²			
		vote	share
Price A.	Lab	655	44.5
Ball W.	Con	572	38.9
Warner M. Ms.	Lab	527	-
Withrington H.	Con	502	-
Shand D.	Lib/SDP	245	16.6
Bishop A.	Lib/SDP	184	-
Turnout		45.3	5.6

Stapenhill (3530)²			
		vote	share
Handley G.	Con	1,067	65.3
Clarke K.	Con	973	-
Gopsill D.	Lab	568	34.7
Hopper J. Ms.	Lab	499	-
Turnout		46.3	30.5

Stretton (3269)²			
		vote	share
Hunter G. Ms.	Con	879	66.1
Wyatt A.	Con	782	-
Hodson-Walker W.	Lib/SDP	451	33.9
Harlow J.	Lib/SDP	437	-
Turnout		40.7	32.2

Town (3163)²			
		vote	share
Tunnicliffe C.	Con	615	34.9
Miln P.	Lib/SDP	425	24.1
Barker R.	Ind	401	22.7
Miles D. Ms.	Lab	322	18.3
Bluck E. Ms.	Ind	285	-
Hetherington G.	Ind	251	-
Munslow A.	Lab	219	-
Turnout		55.7	10.8

Tutbury & Hanbury (2746)²			
		vote	share
Shilton W.	Con	938	59.3
Brown D. Ms.	Con	850	-
Crossley W.	Lab	644	40.7
Dyke T.	Lab	554	-
Turnout		57.6	18.6

Uxbridge (2177)²			
		vote	share
O'Shea C.	Lab	530	48.5
Archer P.	Lib/SDP	396	36.3
Foster T.	Lab	389	-
Bristow W.	Lib/SDP	362	-
Harrison J. Ms.	Con	166	15.2
Anderson M. Ms.	Con	150	-
Turnout		50.2	12.3

Victoria (3505)²			
		vote	share
Walker F.	Lab	760	50.0
Morris D.	Lab	592	-
Parker W.	Con	553	36.4
Peverell A.	Con	471	-
Dilpazir A.	Lib/SDP	206	13.6
Turnout		43.3	13.6

Waterside (3479)²			
		vote	share
Heptonstall D.	Lab	1,144	68.3
Watts R. Ms.	Lab	996	-
Bates I.	Con	532	31.7
Morris P.	Con	269	-
Turnout		48.2	36.5

Weaver (1592)			
		vote	share
Bailey W.	Con	548	52.7
Davis M. Ms.	Ind	492	47.3
Turnout		65.3	5.4

Winshill (5339)³			
		vote	share
Pride R.	Lab	1,439	57.2
Joyce T.	Lab	1,352	-
Bartlett M.	Lab	1,197	-
Taylor P.	Con	1,076	42.8
Forster K.	Con	1,053	-
Harrison D.	Con	1,022	-
Turnout		47.1	14.4

Yoxall (1517)			
		vote	share
Gregory R.	Con	674	82.9
Wright T.	Lab	139	17.1
Turnout		53.6	65.8

East Staffordshire - 1987

Abbey (1833)			
		vote	share
Capewell N.	Con	623	81.3
Haynes E. Ms.	Lab	143	18.7
Turnout		41.8	62.7

Bagots (1972)			
		vote	share
Moore I. Ms.	Con	737	64.1
Williams K.	Ind	273	23.7
Lowe C. Ms.	Lab	140	12.2
Turnout		58.3	40.3

Branston (3224)²			
		vote	share
Boss M. Ms.	Con	1,059	59.2
Welton S.	Con	926	-
Radley A. Ms.	Lib/SDP	446	24.9
Jones C.	Lib/SDP	418	-
Jones G.	Lab	285	15.9
Deakin W. Ms.	Lab	232	-
Turnout		55.5	34.2

Broadway (3028)²			
		vote	share
Smith F.	Lab	600	44.6
Knight P. Ms.	Lab	558	-
Chaudhry F.	Con	416	30.9
Murphy D. Ms.	Con	385	-
Bristow W.	Lib/SDP	330	24.5
Shrewsbury J.	Lib/SDP	295	-
Turnout		44.5	13.7

Burton (881)			
		vote	share
Perry P. Ms.	Lab	312	73.6
Foster G. Ms.	Con	112	26.4
Turnout		48.1	47.2

Churnet (1891)			
		vote	share
Ratcliffe W.	Con	645	70.0
Stanley J.	Lab	277	30.0
Turnout		48.8	39.9

Crown (1840)			
		vote	share
Snow J.	Con	822	76.2
Robertson G.	Lab	133	12.3
Talbot A.	Ind	124	11.5
Turnout		58.6	63.9

Edgehill (3100)²			
		vote	share
Hill P. Ms.	Lab	900	65.4
Watts R.	Lab	834	-
Gothard J.	Con	477	34.6
Morris A.	Con	450	-
Turnout		44.4	30.7

Eton (2894)²			
		vote	share
Haynes P.	Lab	708	56.9
Callister G.	Lab	644	-
Bladon D.	Con	273	21.9
Shand D.	Lib/SDP	264	21.2
Bishop A. Ms.	Lib/SDP	238	-
Turnout		43.0	34.9

Heath (4562)³			
		vote	share
Mellor R.	Ind	927	28.7
Edginton F.	Lab	921	28.5
Dean A.	Lab	917	-
Wilks B.	Con	882	27.3
Tunnicliffe D. Ms.	Con	801	-
Davey C.	Lab	637	-
Waller B.	Lib/SDP	498	15.4
Turnout		70.8	0.2

Horninglow (4717)³			
		vote	share
Builth K.	Lab	1,144	58.7
Barton J. Ms.	Lab	1,064	-
Deakin E.	Lab	1,039	-
Huckerby W.	Con	805	41.3
Fellows B. Ms.	Con	767	-
Wood J. Ms.	Con	723	-
Turnout		41.3	17.4

Needwood (3961)²			
		vote	share
Deeming T.	Con	1,124	56.1
Ball A. Ms.	Con	1,096	-
Jay J.	Lib/SDP	518	25.8
Appleby R.	Lab	362	18.1
Knight R.	Lab	314	-
Turnout		50.6	30.2

Outwoods (2085)²			
		vote	share
Gowtage C.	Con	736	73.5
Ward R.	Con	708	-
Mott J. Ms.	Lab	266	26.5
Foster T.	Lab	247	-
Turnout		48.1	46.9

Rolleston On Dove (2707)²			
		vote	share
Thornewill W.	Con	898	47.3
Trelinski M.	Lib/SDP	881	46.4
Bradley K.	Con	806	-
Hodson-Walker W.	Lib/SDP	705	-
Gilberthorpe R. Ms.	Lab	121	6.4
Squire P.	Lab	74	-
Turnout		70.2	0.9

Shobnall (3179)²			
		vote	share
Beresford P.	Lab	868	57.8
Tilling D.	Lab	836	-
Ball W.	Con	635	42.2
Fisher R.	Con	623	-
Turnout		47.3	15.5

Stapenhill (3836)²			
		vote	share
Handley G.	Con	1,017	50.5
Clarke K.	Con	1,002	-
Cowan A.	Lab	631	31.3
Salt K. Ms.	Lab	607	-
Henchcliffe K. Ms.	Lib/SDP	366	18.2
Pope A. Ms.	Lib/SDP	345	-
Turnout		52.5	19.2

Stretton (4935)²			
		vote	share
Hunter G. Ms.	Con	1,287	54.0
Wyatt A.	Con	1,118	-
Hudson P.	Lab	606	25.4
Read S. Ms.	Lab	581	-
Gordon A. Ms.	Lib/SDP	489	20.5
Turnout		48.3	28.6

Town (3197)²			
		vote	share
Barker R.	Con	819	60.4
Tunncliffe C.	Con	741	-
Milward S. Ms.	Lab	538	39.6
Hollis F.	Lab	516	-
Turnout		42.4	20.7

Tutbury & Hanbury (2840)²			
		vote	share
Brown D. Ms.	Con	849	39.3
Cutchev C.	Con	638	-
Crossley W.	Lab	573	26.5
Dyke T.	Lab	473	-
Lane E.	Ind	393	18.2
Cooke K. Ms.	Lib/SDP	347	16.0
Turnout		76.1	12.8

Uxbridge (2161)²			
		vote	share
Archer P.	Lib/SDP	583	43.4
O'Shea C.	Lab	459	34.2
Marbrow S. Ms.	Lib/SDP	431	-
Wright T.	Lab	363	-
Khan M.	Con	300	22.4
Clews S.	Con	260	-
Turnout		62.1	9.2

Victoria (3454)²			
		vote	share
Walker F.	Lab	677	40.8
Fern L.	Con	656	39.5
Harper M. Ms.	Lab	586	-
Wilson D.	Con	549	-
Warner H.	Lib/SDP	327	19.7
Ahmed D.	Lib/SDP	324	-
Turnout		48.1	1.3

Waterside (3381)²			
		vote	share
Heptonstall D.	Lab	1,076	67.9
Watts R. Ms.	Lab	979	-
Lloyd-Morris M.	Con	267	16.8
Butcher B. Ms.	Lib/SDP	242	15.3
Turnout		46.9	51.0

Weaver (1590)			
		vote	share
Bailey W.	Con	630	80.1
Huckerby M.	Lab	157	19.9
Turnout		49.5	60.1

Winshill (5286)³			
		vote	share
Fletcher D.	Lab	1,564	58.9
Bartram F. Ms.	Lab	1,355	-
Cornell C.	Lab	1,319	-
Blackshaw P.	Con	1,093	41.1
Parker J.	Con	991	-
Rose S. Ms.	Con	963	-
Turnout		50.3	17.7

Yoxall (1598)			
		vote	share
Wright P. Ms.	Con	659	81.7
Butler K.	Lab	148	18.3
Turnout		50.5	63.3

East Staffordshire - 1991

Abbey (1905)			
		vote	share
Whittaker E.	Con	660	69.9
Brough J. Ms.	Ind	166	17.6
Cowan A.	Lab	118	12.5
Turnout		48.7	52.3

Bagots (2063)			
		vote	share
Robinson G. Ms.*	Con	857	83.2
Foster T.	Lab	173	16.8
Turnout		50.1	66.4

Branston (3173)²			
		vote	share
Boss M. Ms.*	Con	997	52.5
Welton S.*	Con	853	-
Dumelow J. Ms.	Lab	530	27.9
Leahy T.	Lab	439	-
Radley A. Ms.	LD	373	19.6
Turnout		54.7	24.6

Broadway (2889)²			
		vote	share
Carruthers M.	Lab	782	63.3
Knight P. Ms.*	Lab	753	-
Hussain T.	Con	299	24.2
Collett-Jobey P.	Con	280	-
Siddorn M.	LD	154	12.5
Jamil M.	LD	136	-
Turnout		46.0	39.1

Burton (1091)			
		vote	share
Perry P. Ms.*	Lab	384	87.5
Hives R.	Con	55	12.5
Turnout		40.6	74.9

Churnet (1881)			
		vote	share
Ratcliffe W.*	Con	454	59.4
Clarke P.	Lab	310	40.6
Turnout		40.8	18.8

Crown (1890)			
		vote	share
Snow J.*	Con	590	49.5
Fisher R.	Ind	514	43.1
Bryan W.	Lab	89	7.5
Turnout		63.3	6.4

Edgehill (3055)²			
		vote	share
Hill P. Ms.*	Lab	937	70.1
Watts R.*	Lab	837	-
Grantham P.	Con	400	29.9
Cullen J. Ms.	Con	346	-
Turnout		46.3	40.2

Eton (2970)²			
		vote	share
Haynes P.*	Lab	921	74.3
Callister G.*	Lab	875	-
Fellows B. Ms.	Con	318	25.7
Staples E. Ms.	Con	258	-
Turnout		45.0	48.7

Heath (4569)³			
		vote	share
Dean A.*	Lab	1,246	64.7
Edginton F.*	Lab	1,166	-
Hollis F.*	Lab	923	-
Wilks B.	Con	680	35.3
Foster G.	Con	593	-
Harris A. Ms.	Con	589	-
Turnout		43.9	29.4

Horninglow (4644)³			
		vote	share
Builth K.*	Lab	1,360	62.4
Fitzpatrick M.	Lab	1,269	-
Mott J.	Lab	1,240	-
Chambers R. Ms.	Con	820	37.6
Freeman V.	Con	712	-
Elliot D.	Con	710	-
Turnout		48.3	24.8

Needwood (3956)²			
		vote	share
Deeming T.*	Con	943	44.6
Ball A. Ms.*	Con	923	-
Jay J.	LD	665	31.5
Murray P.	Lab	504	23.9
Peake G.	Lab	286	-
Turnout		47.7	13.2

Outwoods (2058)²			
		vote	share
Ward R.*	Con	661	75.4
Gibson S.	Con	593	-
Jones G.	Lab	216	-
Hopper J. Ms.	Lab	216	24.6
Turnout		51.6	50.7

Rolleston On Dove (2643)²			
		vote	share
Trelinski M.*	LD	977	57.9
Hodson-Walker W.	LD	847	-
Bailey I.	Con	632	37.5
Thornewill W.*	Con	557	-
Smith J. Ms.	Lab	77	4.6
Borrington M.	Lab	67	-
Turnout		62.7	20.5

Shobnall (3301)²			
		vote	share
Beresford P.*	Lab	1,014	62.0
Tilling D.*	Lab	941	-
Clews S.	Con	621	38.0
Maier J.	Con	537	-
Turnout		52.3	24.0

Stapenhill (4553)²			
		vote	share
Bridges D.	Con	1,112	48.6
Wright J.	Con	1,072	-
Fletcher M. Ms.	Lab	875	38.2
Salter D.	Lab	827	-
Barratt R.	LD	303	13.2
Pope A. Ms.	LD	271	-
Turnout		52.3	10.3

Stretton (5795)²			
		vote	share
Hunter G. Ms.*	Con	1,388	52.6
Wyatt A.*	Con	1,206	-
Faulks S. Ms.	Lab	877	33.2
Burston T.	Lab	737	-
Read S. Ms.	Ind	376	14.2
Turnout		43.0	19.3

Town (3396)²			
		vote	share
Dean J. Ms.	Lab	878	57.5
Barker R.*	Con	649	42.5
Barrett M.	Con	629	-
Kelly A.	Lab	584	-
Turnout		45.1	15.0

Tutbury & Hanbury (2956) ²			
		vote	share
Brown D. Ms.*	Con	895	45.4
Cutchev C.*	Con	778	-
Crossley W.	Lab	677	34.3
Dyke T.	Lab	573	-
Cooke K. Ms.	LD	401	20.3
Turnout		61.0	11.0

Uxbridge (2034) ²			
		vote	share
Marbrow S. Ms.*	LD	666	58.8
Rudge D.	LD	564	-
Dittmer M. Ms.	Lab	360	31.8
Waheed A.	Lab	329	-
Khan M.	Con	106	9.4
Beach N.	Con	94	-
Turnout		56.8	27.0

Victoria (3467) ²			
		vote	share
Harper M. Ms.*	Lab	963	61.8
Haynes E. Ms.	Lab	861	-
Fern L.*	Con	594	38.2
Wilson D.	Con	463	-
Turnout		46.9	23.7

Waterside (3274) ²			
		vote	share
Heptonstall D.*	Lab	1,322	85.6
Dawn T.	Lab	1,234	-
Baron G. Ms.	Con	223	14.4
Insley C.	Con	221	-
Turnout		48.9	71.1

Weaver (1597)			
		vote	share
Bloor R.	Con	484	52.7
Williams M.	Ind	303	33.0
Huckerby M.	Lab	132	14.4
Turnout		57.6	19.7

Winshill (5149) ³			
		vote	share
Fletcher D.*	Lab	1,523	65.7
Cornell C.*	Lab	1,441	-
Hancox P. Ms.	Lab	1,325	-
Clarke E. Ms.	Con	794	34.3
Robinson R.	Con	761	-
Atkins P.	Con	684	-
Turnout		48.4	31.5

Yoxall (1629)			
		vote	share
Wright P. Ms.*	Con	557	70.5
Allen C. Ms.	Ind	233	29.5
Turnout		48.6	41.0

East Staffordshire - 1995

Abbey (1917)			
		vote	share
Whittaker E.*	Ind	372	47.5
Brough D.	Con	277	35.4
Watts M.	Lab	134	17.1
Turnout		40.9	12.1

Bagots (1985)			
		vote	share
Fox A.	Con	470	48.3
Robinson G. Ms.*	Ind Con	289	29.7
Harrison G.	Lab	214	22.0
Turnout		49.0	18.6

Branston (3677) ²			
		vote	share
Boss M. Ms.*	Con	646	42.2
Welton S.*	Con	639	-
Leahy T.	Lab	543	35.5
Flynn C. Ms.	Lab	515	-
Ward A.	Ind	342	22.3
Turnout		40.5	6.7

Broadway (2954) ²			
		vote	share
Carruthers M.*	Lab	662	59.9
Knigh P. Ms.*	Lab	613	-
Chaudhry Z.	Con	201	18.2
Sharp S.	LD	190	17.2
Barratt R.	LD	179	-
Bowering M.	Con	117	-
Clifford M.	Ind	53	4.8
Turnout		36.3	41.7

Burton (1083)			
		vote	share
Perry P. Ms.*	Lab	310	84.0
Hives R.	Con	59	16.0
Turnout		34.3	68.0

Churnet (1755)			
		vote	share
Ivinson R.	Lab	447	50.6
Ratcliffe W.*	Ind	262	29.6
Atkins P.	Con	175	19.8
Turnout		50.5	20.9

Crown (1915)			
		vote	share
Snow J.*	Ind Con	453	45.0
Massey R.	Con	323	32.1
Trueman D.	Lab	230	22.9
Turnout		52.8	12.9

Edgehill (2882) ²			
		vote	share
Pride R.	Lab	802	67.9
Watts R.*	Lab	798	-
Dutton A.	Ind	208	17.6
Cullen J. Ms.	Con	172	14.6
Turnout		39.2	50.3

Eton (2786) ²			
		vote	share
Haynes P.*	Lab	611	66.8
Callister G.*	Lab	587	-
Fellows B. Ms.	Con	171	18.7
Rodgers M.	Ind	133	14.5
Ahmed D.	Con	82	-
Turnout		33.9	48.1

Heath (4402) ³			
		vote	share
Edginton F.*	Lab	1,167	73.0
Hollis F.*	Lab	1,018	-
Walters B.	Lab	946	-
Wilks B.	Con	431	27.0
Harris A. Ms.	Con	414	-
Dartnell A.	Con	348	-
Turnout		36.1	46.1

Horninglow (4710) ³			
		vote	share
Builth K.*	Lab	1,234	80.8
Fitzpatrick M.*	Lab	1,155	-
Mott J.*	Lab	1,130	-
Harvey P. Ms.	Con	293	19.2
Maher A. Ms.	Con	253	-
Turnout		34.0	61.6

Needwood (3796) ²			
		vote	share
Walker S. Ms.	Lab	540	30.1
Coxhill P.	Lab	523	-
Wedgwood A.	Con	455	25.3
Jay J.	LD	443	24.7
Bond T.	Con	427	-
Deeming T.*	Ind Con	358	19.9
Wright P. Ms.	Ind Con	270	-
Radley A. Ms.	LD	194	-
Turnout		44.8	4.7

Outwoods (1999) ²			
		vote	share
Gaskin T.*	Ind Con	269	29.7
Bartram S.	Lab	232	25.6
Winstone J.	LD	228	25.2
Reilly B. Ms.	Lab	222	-
Gibson S.*	Ind Con	192	-
Maher J.	Con	176	19.4
Staples E. Ms.	Con	175	-
Fletcher L. Ms.	LD	132	-
Turnout		44.0	4.1

Rolleston On Dove (2553) ²			
		vote	share
Trelinski M.*	LD	868	60.7
Hodson-Walker W.	LD	771	-
Bather R.	Con	435	30.4
Pratt D. Ms.	Lab	126	8.8
Dolman W.	Lab	116	-
Turnout		52.3	30.3

Shobnall (3207) ²			
		vote	share
Beresford P.*	Lab	911	77.3
Tilling D.*	Lab	836	-
Beach N.	Con	267	22.7
Atkinson-Willes G.	Con	261	-
Turnout		39.3	54.7

Stapenhill (4986) ²			
		vote	share
Fletcher M. Ms.	Lab	1,121	51.1
Hubert E.	Lab	1,074	-
Bridges D.*	Con	766	34.9
Vale I.	Con	687	-
Wright J.*	Ind	307	14.0
Turnout		43.6	16.2

Stretton (5796) ²			
		vote	share
Davies P.	Lab	972	41.9
Huckerby M.	Lab	885	-
Clews S.	Con	566	24.4
Fletcher D.*	LD	432	18.6
Smith G.	Con	406	-
Morris J.	LD	397	-
Hunter G. Ms.*	Ind	352	15.2
Turnout		36.0	17.5

Town (3810) ²			
		vote	share
Dean J. Ms.*	Lab	893	53.8
Noyes C. Ms.	Lab	515	-
Miln P.	Ind	417	25.1
Wilks B. Ms.	Con	349	21.0
Barrett M.	Con	284	-
Turnout		37.3	28.7

Tutbury & Hanbury (2895) ²			
		vote	share
Crossley W.	Lab	790	60.6
Dyke T.	Lab	733	-
Morris K.	Con	513	39.4
Brough J.	Con	476	-
Turnout		46.4	21.3

Uxbridge (1936)²			
		vote	share
Taylor J.	Lab	357	46.7
Marbrow S. Ms.*	LD	330	43.2
Wells T.	Lab	324	-
Warner H.*	LD	284	-
Hicklin J.	Con	77	10.1
Turnout		38.2	3.5

Victoria (3256)²			
		vote	share
Haynes E. Ms.*	Lab	824	75.8
Thomas J. Ms.*	Lab	726	-
Harrison D. Ms.	Con	263	24.2
Shipley A.	Con	224	-
Turnout		34.7	51.6

Waterside (3137)²			
		vote	share
Heptonstall D.*	Lab	1,080	89.1
Dawn T.*	Lab	1,015	-
Insley C.	Con	132	10.9
Turnout		40.2	78.2

Weaver (1633)			
		vote	share
Grier S. Ms.	Lab	291	39.4
Brookes D.	Con	271	36.7
Bloor R.*	Ind Con	177	24.0
Turnout		45.4	2.7

Winshill (4977)³			
		vote	share
Fletcher D.*	Lab	1,304	78.8
Cornell C.*	Lab	1,188	-
Hancox P. Ms.*	Lab	1,110	-
Clarke E. Ms.	Con	350	21.2
Rose M.	Con	309	-
Turnout		34.8	57.7

Yoxall (1601)			
		vote	share
Behague B. Ms.	Con	361	46.2
Allen H. Ms.	Lab	277	35.5
Abbott C.	Ind	143	18.3
Turnout		49.2	10.8

East Staffordshire - 1999

Abbey (2129)			
		vote	share
Whittaker E.*	Con	653	84.3
Fulford A.	Lab	122	15.7
Turnout		36.5	68.5

Bagots (1979)			
		vote	share
Fox A.*	Con	725	80.0
Haw D.	Lab	181	20.0
Turnout		47.0	60.0

Branston (4823)²			
		vote	share
Bowering M.	Con	748	61.5
Stokes P. Ms.	Con	708	-
Leahy T.	Lab	469	38.5
Mott J. Ms.	Lab	421	-
Turnout		26.4	22.9

Broadway (2829)²			
		vote	share
Carruthers M.*	Lab	562	73.3
Galbraith J.	Lab	482	-
Kowalik M.	Con	110	14.3
Shrewsbury J.	LD	95	12.4
Turnout		24.7	58.9

Burton (1133)			
		vote	share
Perry P. Ms.*	Lab	264	75.9
Fletcher D.	LD	84	24.1
Turnout		29.5	51.7

Churnet (1934)			
		vote	share
Ivinston R.*	Lab	471	61.6
Ratcliffe W.	Con	293	38.4
Turnout		39.6	23.3

Crown (1915)			
		vote	share
Corbett T.	Con	710	77.2
Noyes A.	Lab	210	22.8
Turnout		49.0	54.3

Edgehill (2782)²			
		vote	share
Pride R.*	Lab	414	51.5
Watts R.*	Lab	409	-
Crowley M. Ms.	Con	189	23.5
Dutton A.	Ind	136	16.9
Rhodes L.	ND	65	8.1
Turnout		25.6	28.0

Eton (2715)²			
		vote	share
Haynes P.*	Lab	426	63.1
Callister G.*	Lab	416	-
Rodgers M.	LD	156	23.1
Winstone J.	LD	148	-
Elson L. Ms.	Con	93	13.8
Turnout		26.4	40.0

Heath (4411)³			
		vote	share
Edginton F.*	Lab	701	47.3
Lloyd M.	Lab	592	-
Fergus J.	Lab	582	-
Betts M. Ms.	Con	578	39.0
Bowler K. Ms.	Con	543	-
Ridgway N.	Con	520	-
Hollis F.*	Ind	203	13.7
Turnout		31.6	8.3

Horninglow (4611)³			
		vote	share
Builth K.*	Lab	783	72.3
Mott J.*	Lab	722	-
Fitzpatrick M.*	Lab	718	-
Fellows B. Ms.	Con	300	27.7
Turnout		23.4	44.6

Needwood (3846)²			
		vote	share
Gent S. Ms.*	Con	830	58.4
Jessel J. Ms.	Con	814	-
Coxill P.*	Lab	592	41.6
Treaner S.	Lab	525	-
Turnout		38.0	16.7

Outwoods (2052)²			
		vote	share
Morgan D.	Lab	0	0.0
Gaskin T.*	Con	0	0.0
Turnout		0.0	0.0

Rolleston On Dove (2463)²			
		vote	share
Trelinski M.*	LD	878	61.7
Walker W.*	LD	747	-
Wynne L. Ms.	Con	465	32.7
Pratt D. Ms.	Lab	81	5.7
Turnout		50.9	29.0

Shobnall (3265)²			
		vote	share
Beresford P.*	Lab	728	59.0
Tilling D.*	Lab	681	-
Ching S. Ms.	Con	284	23.0
Anderson R.	LD	221	17.9
Turnout		33.1	36.0

Stapenhill (5348)²			
		vote	share
Kehoe S.	Con	860	48.3
Fletcher M. Ms.*	Lab	830	46.6
Waterland R.	Con	790	-
Noble G.	Lab	737	-
Rowland J.	ND	92	5.2
Turnout		32.9	1.7

Stretton (5961)²			
		vote	share
Davies P.*	Lab	956	61.0
Jones K.	Lab	774	-
Smith G.	Con	610	39.0
Browning B.	Con	574	-
Turnout		26.3	22.1

Town (4281)²			
		vote	share
Brookes D.*	Con	658	42.5
Whitmore D.	Con	507	-
Barrett M.	Ind	470	30.3
Noyes C. Ms.	Lab	421	27.2
Brown T.	Lab	358	-
Turnout		30.9	12.1

Tutbury & Hanbury (2957)²			
		vote	share
Harvey P. Ms.	Con	536	63.3
Staples E. Ms.	Con	493	-
Walker S. Ms.	Lab	311	36.7
Botting N.	Lab	308	-
Turnout		29.6	26.6

Uxbridge (1913)²			
		vote	share
Marbrow S. Ms.*	LD	449	36.2
Chaudhry A.	Lab	437	35.2
Warner H.	LD	376	-
Hussain C.	Ind	298	24.0
Taylor J.*	Lab	216	-
Davies C.	Con	56	4.5
Turnout		50.0	1.0

Victoria (3290)²			
		vote	share
Haynes E. Ms.*	Lab	562	54.8
Jones J. Ms.*	Lab	539	-
Thathall K.	Con	463	45.2
Ratyal S.	Con	456	-
Turnout		32.6	9.7

Waterside (2965)²			
		vote	share
Dawn T.*	Lab	735	77.8
Heptonstall D.*	Lab	719	-
Insley C.	Con	123	13.0
Sharp K.	ND	87	9.2
Turnout		30.0	64.8

Weaver (1644)			
		vote	share
Wimbush A.	Con	489	73.2
Grier S. Ms.*	Lab	179	26.8
Turnout		41.1	46.4

Winshill (4799)³			
		vote	share
Fletcher D.*	Lab	751	67.0
Hancox P. Ms.*	Lab	633	-
White A. Ms.	Lab	565	-
Clarke E. Ms.	Con	370	33.0
Turnout		23.3	34.0

Yoxall (1619)			
		vote	share
Behague B. Ms.*	Con	415	67.0
Reid L. Ms.	LD	113	18.3
Morgan A. Ms.	Lab	91	14.7
Turnout		38.4	48.8

East Staffordshire - 2003

Abbey (2201)			
		vote	share
Lamb K. Ms.	Con	823	84.5
Jones G.	Lab	151	15.5
Turnout		44.3	69.0

Anglesey (4195)²			
		vote	share
Chaudhry A.*	Lab	869	46.6
Carruthers M.*	Lab	818	-
Marbrow S. Ms.*	LD	629	33.7
Warner H.	LD	395	-
Hussain T.	Con	368	19.7
Horlock P.	Con	270	-
Turnout		45.8	12.9

Bagots (2011)			
		vote	share
Fox A.*	Con	833	83.1
Pratt D. Ms.	Lab	170	16.9
Turnout		51.0	66.1

Branston (5452)³			
		vote	share
Bowering M.*	Con	1,422	63.9
Startin F.	Con	1,154	-
Grosvenor R.	Con	1,062	-
Morgan D.*	Lab	805	36.1
Croghan E. Ms.	Lab	803	-
Ganley W.	Lab	734	-
Turnout		41.7	27.7

Brizlincote (4011)²			
		vote	share
Insley C.	Con	1,090	58.0
Butler C.	Con	969	-
Gale M.	Lab	788	42.0
Treanor S.	Lab	645	-
Turnout		45.5	16.1

Burton (1727)			
		vote	share
Coxhill P.	Lab	308	51.3
Shrewsbury J.	LD	153	25.5
Bailey P. Ms.	Con	139	23.2
Turnout		35.5	25.8

Churnet (2019)			
		vote	share
Atkins P.	Con	565	59.7
Ivinson R.*	Lab	382	40.3
Turnout		48.0	19.3

Crown (2077)			
		vote	share
Reeves D.	Con	565	50.9
Hardwick R.	Ind	385	34.7
Fulford S. Ms.	Lab	159	14.3
Turnout		54.0	16.2

Eton Park (3867)²			
		vote	share
Haynes P.*	Lab	788	62.9
Clarke R.*	Lab	622	-
Fellows B. Ms.	Con	464	37.1
Whittaker E.*	Con	318	-
Turnout		31.3	25.9

Heath (4538)²			
		vote	share
Morrison G.	Con	852	53.2
Betts M. Ms.	Con	786	-
Noyes C. Ms.	Lab	750	46.8
Fergus J.*	Lab	738	-
Turnout		37.6	6.4

Horninglow (5755)³			
		vote	share
Mott J.*	Lab	1,198	51.0
Builth K.*	Lab	1,146	-
Fitzpatrick M.*	Lab	972	-
Latham P.	LD	643	27.4
Winstone J.	LD	627	-
Morris J.	LD	511	-
Kowalik M.	Con	510	21.7
Makin B. Ms.	Con	487	-
Smith S.	Con	431	-
Turnout		41.2	23.6

Needwood (4325)²			
		vote	share
Jessel J. Ms.*	Con	1,275	49.1
Gent S. Ms.*	Con	1,217	-
Jay J.	LD	665	25.6
Walker S. Ms.	Lab	656	25.3
Baxter J.	Lab	334	-
Turnout		52.4	23.5

Rolleston On Dove (2533)			
		vote	share
Trelinski M. Ms.*	LD	906	60.8
Toon J.	Con	487	32.7
Johnston R.	Lab	98	6.6
Turnout		60.0	28.1

Shobnall (4449)²			
		vote	share
Tilling D.*	Lab	1,021	49.3
Galbraith J.*	Lab	968	-
Chaudhry S.	Ind	527	25.4
Ahmed D.	Con	524	25.3
Makin D.	Con	392	-
Turnout		44.9	23.8

Stapenhill (5965)³			
		vote	share
Dawn T.*	Lab	1,436	71.1
Grier S. Ms.*	Lab	1,180	-
Haw D.*	Lab	1,139	-
Clarke E. Ms.	Con	585	28.9
Morgan G.	Con	569	-
Guest M. Ms.	Con	518	-
Turnout		34.4	42.1

Stretton (6229)³			
		vote	share
Phillips N.	Con	1,369	45.7
Bather R.	Con	1,262	-
Bradley I.	Con	1,009	-
Tuffs C.	Lab	900	30.1
Read S. Ms.	Lab	883	-
Andjelkovic S. Ms.	Lab	793	-
Winson K. Ms.	LD	725	24.2
Ambrose B.	LD	651	-
Turnout		45.0	15.7

Town (4658)²			
		vote	share
Whitmore D.*	Con	901	40.8
Brookes*	Con	897	-
Barrett M.	Ind	833	37.7
Noyes A.	Lab	477	21.6
Grigg H.	Lab	449	-
Turnout		42.6	3.1

Tutbury & Outwoods (4340)²			
		vote	share
Staples E. Ms.*	Con	1,207	54.4
Hathaway T.*	Con	1,132	-
Dyke O.	Lab	718	32.4
Launchbury M.	Lab	658	-
Fletcher D.	LD	292	13.2
Rodgers M.	LD	270	-
Turnout		50.1	22.1

Weaver (1649)			
		vote	share
Wimbush A.*	Con	457	49.4
Bull E. Ms.	Ind	425	45.9
Scotland J.	Lab	43	4.6
Turnout		56.4	3.5

Winshill (6147)³			
		vote	share
Fletcher D.*	Lab	1,477	57.6
Hancox P. Ms.*	Lab	1,314	-
White A. Ms.*	Lab	1,239	-
Harrison J. Ms.	Con	1,087	42.4
Harvey P. Ms.*	Con	851	-
Kowalik K. Ms.	Con	849	-
Turnout		40.4	15.2

Yoxall (2120)			
		vote	share
Corbett T.*	Con	780	66.5
Reid L. Ms.	LD	266	22.7
Morgan A. Ms.	Lab	127	10.8
Turnout		55.5	43.8

East Staffordshire - 2007

Abbey (2230)			
		vote	share
Lamb K. Ms.*	Con	865	86.5
Burton C.	Lab	135	13.5
Turnout		45.5	73.0

Anglesey (4414)²			
		vote	share
Chaudhry A.*	Lab	919	52.1
Carruthers M.*	Lab	661	-
Chaudhry S.	Con	499	28.3
Marbrow S. Ms.	LD	346	19.6
Warner H.	LD	292	-
Harrison J. Ms.	Con	249	-
Turnout		36.4	23.8

Bagots (2056)			
		vote	share
Fox A.*	Con	758	82.5
Tuffs J.	Lab	161	17.5
Turnout		44.8	65.0

Branston (5529)³			
		vote	share
Ackroyd P. Ms.	Con	1,108	66.1
Bowering M.*	Con	1,090	-
Grosvenor R.*	Con	1,047	-
Draycott E. Ms.	Lab	568	33.9
Jones G.	Lab	550	-
Morgan D.	Lab	494	-
Turnout		32.4	32.2

Brizlincote (4101)²			
		vote	share
Insley C.*	Con	977	66.3
Peters B.	Con	946	-
Sherratt K. Ms.	Lab	496	33.7
Edmonds J.	Lab	481	-
Turnout		38.0	32.7

Burton (2203)			
		vote	share
Rodgers M.	LD	313	47.1
Coxhill P.*	Lab	225	33.8
Barkham J.	Con	127	19.1
Turnout		30.3	13.2
Churnet (2134)			
		vote	share
Atkins P.*	Con	539	63.0
Ivinson R.	Lab	317	37.0
Turnout		40.5	25.9
Crown (2111)			
		vote	share
Hardwick R.	Con	719	74.6
Morgan A. Ms.	Lab	128	13.3
Kay D.	BNP	117	12.1
Turnout		46.1	61.3
Eton Park (4013)²			
		vote	share
Andjelkovic S. Ms.	Lab	549	46.2
Clarke R.*	Lab	496	-
Cutchev C.	Con	379	31.9
Hussain T.	Con	360	-
Shrewsbury J.	LD	260	21.9
Turnout		29.0	14.3
Heath (4547)²			
		vote	share
Morrison G.*	Con	751	47.4
Grigg H.	Con	688	-
Blencowe M.	Lab	617	38.9
Noyes C. Ms.	Lab	616	-
Lancaster P.	UKIP	218	13.7
Turnout		33.7	8.4
Horninglow (5925)³			
		vote	share
Mott J.*	Lab	896	42.0
Builth K.*	Lab	854	-
Johnston B.	Lab	815	-
Bradley S. Ms.	Con	752	35.2
Kniveton K. Ms.	Con	639	-
Grosvenor J. Ms.	Con	615	-
Winstone J.	LD	487	22.8
Turnout		32.2	6.7
Needwood (4400)²			
		vote	share
Jessel J. Ms.*	Con	1,296	74.4
Gent S. Ms.*	Con	1,227	-
Palmer S. Ms.	Lab	446	25.6
Treanor S.	Lab	364	-
Turnout		28.5	48.8
Rolleston On Dove (2623)			
		vote	share
Morris J.	LD	711	57.0
Toon B. Ms.	Con	476	38.2
Donlon Y. Ms.	Lab	60	4.8
Turnout		47.8	18.8
Shobnall (4677)²			
		vote	share
Ganley B.	Lab	719	35.3
Thathall K.	Con	553	27.2
Prescott C.	Lab	552	-
Yasin M.	LD	483	23.7
Penlington M. Ms.	Con	368	-
Hewitt A.	BNP	280	13.8
Turnout		36.8	8.2

Stapenhill (5923)³			
		vote	share
Legg A. Ms.	Lab	962	47.5
Grier S. Ms.*	Lab	707	-
Fitzpatrick M.	Lab	685	-
Jones C.	BNP	592	29.2
Rose S. Ms.	Con	473	23.3
Morgan G.	Con	468	-
Guest M. Ms.	Con	400	-
Turnout		30.0	18.3
Stretton (6274)³			
		vote	share
Bather F.	Con	1,261	48.5
Fowkes M. Ms.	Con	1,221	-
Bradley I.*	Con	1,059	-
Davies P.	Lab	717	27.6
Buxton B.	Pop All	621	23.9
McKiernan J.	Lab	536	-
Walker P.	Lab	496	-
Turnout		36.8	20.9
Town (5091)²			
		vote	share
Barrett M.	Con	1,073	68.4
Brookes D.*	Con	937	-
Noyes A.	Lab	495	31.6
Treney D.	Lab	426	-
Turnout		32.1	36.9
Tutbury & Outwoods (4579)²			
		vote	share
Hathaway T.*	Con	1,275	72.4
Staples E. Ms.*	Con	1,183	-
Mott J. Ms.	Lab	485	27.6
Langslow K. Ms.	Lab	470	-
Turnout		23.3	44.9
Weaver (1665)			
		vote	share
Elias M.	Con	662	86.4
Scotland J.	Lab	104	13.6
Turnout		46.3	72.8
Winshill (6302)³			
		vote	share
Leese D.	Con	976	42.4
Startin F.	Con	926	-
Fletcher D.*	Lab	866	37.6
Edmonds L. Ms.	Lab	808	-
Fox R.	Con	794	-
Hancox P. Ms.*	Lab	756	-
Gale M.	Ind	460	20.0
Turnout		33.0	4.8
Yoxall (2123)			
		vote	share
Corbett T.*	Con	827	87.0
Russell J.	Lab	124	13.0
Turnout		44.9	73.9
East Staffordshire - 2011			
Abbey (2318)			
		vote	share
Whittaker C.	Con	1,014	82.8
Harman E. Ms.	Lab	211	17.2
Turnout		53.4	65.6
Anglesey (4625)²			
		vote	share
Chaudhry A.*	Lab	994	57.4
Carruthers M.*	Lab	971	-
Hussain R.	Con	390	22.5
Parveen N.	Con	367	-
Marbrow S. Ms.	LD	190	11.0
Warner H.	Lib	158	9.1
Turnout		37.6	34.9

Bagots (2139)			
		vote	share
Hall G.	Con	938	84.7
Tuffs J.	Lab	169	15.3
Turnout		52.0	69.5
Branston (5580)³			
		vote	share
Ackroyd P. Ms.*	Con	1,314	66.0
Bowering M.*	Con	1,256	-
Grosvenor R.*	Con	1,220	-
Slater M.	Lab	678	34.0
Joseph E.	Lab	656	-
Key M.	Lab	625	-
Turnout		39.6	31.9
Brizlincote (4323)²			
		vote	share
Peters B.*	Con	1,138	59.9
Fellows J.	Con	911	-
Sherratt K. Ms.	Lab	763	40.1
Shorthouse K. Ms.	Lab	630	-
Turnout		43.6	19.7
Burton (2428)			
		vote	share
Rodgers M.*	Lib	397	47.1
Muir J.	Lab	267	31.7
Rana S. Ms.	Con	179	21.2
Turnout		35.0	15.4
Churnet (2197)			
		vote	share
Smith C.	Con	671	70.5
Mott J. Ms.	Lab	281	29.5
Turnout		43.8	41.0
Crown (2144)			
		vote	share
Hardwick R.*	Con	901	79.1
Treney D.	Lab	238	20.9
Turnout		54.8	58.2
Eton Park (4222)²			
		vote	share
Clarke R.*	Lab	661	43.7
Andjelkovic S. Ms.*	Lab	627	-
Yasin M.	Lib	444	29.4
Hussain T.	Con	406	26.9
Toon J.	Con	348	-
Winstone J.	Lib	324	-
Turnout		37.0	14.4
Heath (4807)²			
		vote	share
Blencowe M.	Lab	723	36.6
Riley A.	Lab	663	-
Grigg H.*	Con	604	30.5
Thomas K. Ms.	Con	590	-
Chapman A.	Ind	448	22.6
Morrison P. Ms.	Ind	295	-
Lancaster P.	UKIP	203	10.3
Turnout		39.8	6.0
Horninglow (6353)³			
		vote	share
Mott J.*	Lab	1,251	53.0
Builth K.*	Lab	1,244	-
Johnston B.*	Lab	1,203	-
Morgan G.	Con	857	36.3
Sparrow I.	Con	809	-
Orta A.	Con	684	-
Kay R.	BNP	251	10.6
Turnout		37.4	16.7
Needwood (4524)²			
		vote	share
Jessel J. Ms.*	Con	1,481	59.7
Jones J. Ms.	Con	1,260	-
Palmer S. Ms.	Lab	620	25.0
Coxhill P.	Lab	531	-
McGuiggan P.	UKIP	379	15.3
Turnout		52.1	34.7

Rolleston On Dove (2730)

		vote	share
Toon B. Ms.	Con	828	52.4
Morris J.*	Lib	449	28.4
Walker P.	Lab	196	12.4
Fitton A.	UKIP	107	6.8
Turnout		58.1	24.0

Shobnall (5026)²

		vote	share
Ganley B. Ms.	Lab	1,179	62.6
Ganley B.*	Lab	1,151	62.6
Hussain M.	Con	595	31.6
Thathall K.*	Con	526	-
Qneibi M.	Lib	110	5.8
Turnout		39.2	0.0

Stapenhill (5947)³

		vote	share
Fitzpatrick M.*	Lab	913	43.3
Legg A. Ms.*	Lab	891	-
Grier S. Ms.*	Lab	825	-
Cooper R.	Con	584	27.7
Peters L. Ms.	Con	487	-
Ackroyd M.	Con	474	-
Jones C.	BNP	342	16.2
Maloney A.	Ind	269	12.8
Turnout		32.7	15.6

Stretton (6330)³

		vote	share
Fowkes M. Ms.*	Con	1,489	49.8
Carlton R. Ms.	Con	1,364	-
Milner L.	Con	1,337	-
Davies P.	Lab	1,008	33.7
McKiernan J.	Lab	759	-
McKiernan S. Ms.	Lab	723	-
Buxton B.	Pop All	495	16.5
Turnout		44.0	16.1

Town (5339)²

		vote	share
Ball P.	Con	921	43.7
Barrett M.*	Con	909	-
Noyes A.	Lab	671	31.9
Russell J.	Lab	654	-
Graham C. Ms.	Ind	514	24.4
Latham J. Ms.	Ind	446	-
Turnout		41.6	11.9

Tutbury & Outwoods (4657)²

		vote	share
Staples E. Ms.*	Con	1,266	62.7
Smith S.	Con	1,238	-
Bettridge A.	Lab	752	37.3
Millar J.	Lab	671	-
Turnout		46.4	25.5

Weaver (1711)

		vote	share
Birnie N.	Con	723	82.3
Trenerly M. Ms.	Lab	156	17.7
Turnout		52.0	64.5

Winshill (6357)³

		vote	share
Fletcher D.*	Lab	1,319	47.5
Leese D.*	Con	1,175	42.3
North I.	Lab	1,092	-
Startin F.*	Con	1,019	-
Scotland J.	Lab	1,018	-
Hill S. Ms.	Con	960	-
Dyche-Albane S.	BNP	283	10.2
Turnout		41.6	5.2

Yoxall (2147)

		vote	share
Brookes D.*	Con	867	79.3
Jones G. Ms.	Lab	226	20.7
Turnout		51.1	58.6

