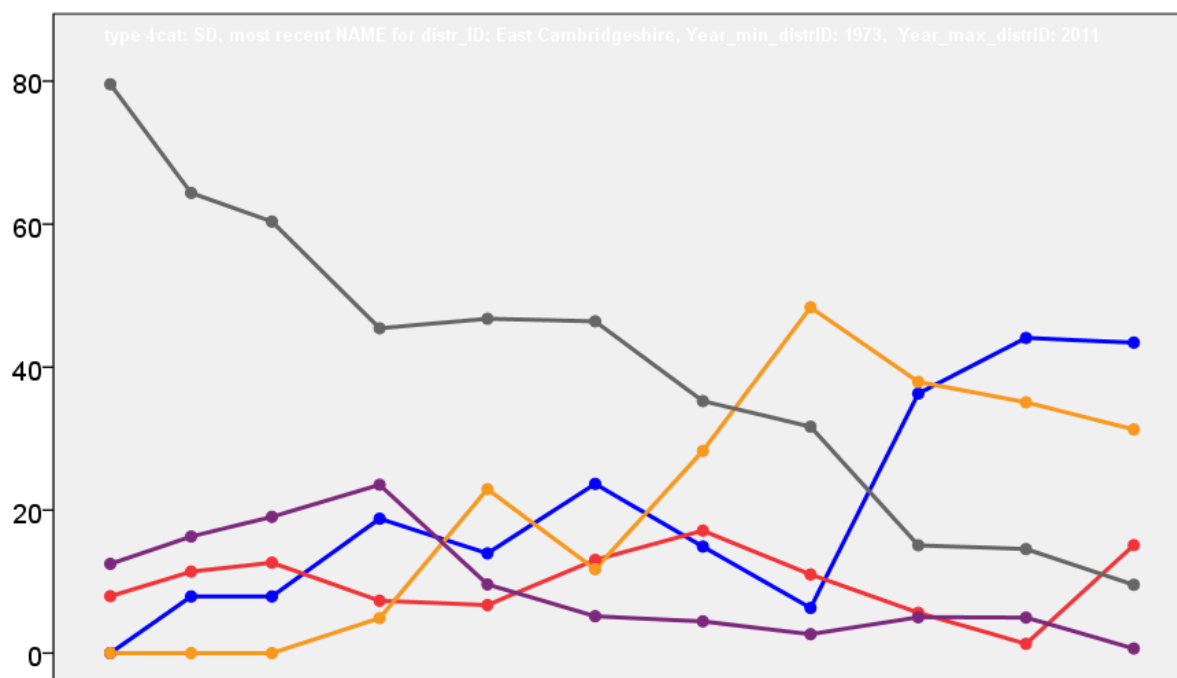


East Cambridgeshire District Council Election Results 1973-2011



Colin Rallings and Michael Thrasher
The Elections Centre
Plymouth University

The information contained in this report has been obtained from a number of sources. Election results from the immediate post-reorganisation period were painstakingly collected by Alan Willis largely, although not exclusively, from local newspaper reports. From the mid-1980s onwards the results have been obtained from each local authority by the Elections Centre. The data are stored in a database designed by Lawrence Ware and maintained by Brian Cheal and others at Plymouth University. Despite our best efforts some information remains elusive whilst we accept that some errors are likely to remain. Notice of any mistakes should be sent to elections@plymouth.ac.uk. The results sequence can be kept up to date by purchasing copies of the annual Local Elections Handbook, details of which can be obtained by contacting the email address above.

Front cover: the graph shows the distribution of percentage vote shares over the period covered by the results. The lines reflect the colours traditionally used by the three main parties. The grey line is the share obtained by Independent candidates while the purple line groups together the vote shares for all other parties.

Rear cover: the top graph shows the percentage share of council seats for the main parties as well as those won by Independents and other parties. The lines take account of any by-election changes (but not those resulting from elected councillors switching party allegiance) as well as the transfers of seats during the main round of local election.

The lower graph shows for each main round of local elections the overall percentage turnout (solid line), the percentage of women candidates standing at (dotted line) and the percentage of women among those elected (hashed line).

East Cambridgeshire - 1973

Bottisham (1683)²

		vote	share
Camish D.	Ind	0	-
Inham G.	Ind	0	0.0
		Turnout	0.0 0.0

Burwell (2889)³

		vote	share
Barton A.	Ind	0	0.0
Gathercole A.	Ind	0	-
Bowers E.	Ind	0	-
		Turnout	0.0 0.0

Cheveley (1597)²

		vote	share
Horwood-Smart S. Ms.	Ind	0	0.0
Bridge P.	Ind	0	-
		Turnout	0.0 0.0

Dullingham Villages (1322)

		vote	share
Kaye D.	Ind	0	0.0
		Turnout	0.0 0.0

Haddenham (2092)²

		vote	share
Morris R.	Ind	619	100.0
Handley J.	Ind	296	-
Hudson J.	Ind	210	-
		Turnout	29.6 100.0

Isleham (1122)

		vote	share
Wells R.	Ind	0	0.0
		Turnout	0.0 0.0

Littleport (3911)⁴

		vote	share
Crabb H.	Ind	700	100.0
Gill R. Ms.	Ind	681	-
Wright B.	Ind	658	-
Crane J.	Ind	485	-
Martin C.	Ind	367	-
Saul W.	Ind	335	-
Gowing J.	Ind	168	-
		Turnout	17.9 100.0

No. 1 (Ely Urban) (7484)⁷

		vote	share
Pope A.	Ind	1,022	44.8
Cornwell S.	Ind	994	-
Rouse M.	Ind Con	984	43.1
Beckett J.	Ind	919	-
Halls H.	Ind	747	-
Oakey F. Ms.	Ind	708	-
Newman A.	Lab	275	12.1
Holmes G.	Lab	240	-
Holmes J. Ms.	Lab	207	-
Dunham S.	Lab	206	-
Hempstead M. Ms.	Lab	198	-
Tregloyne D.	Lab	128	-
		Turnout	30.5 1.7

No. 15 (Fordham) (1473)

		vote	share
Newport J.	Ind	0	0.0
		Turnout	0.0 0.0

No. 18 (Chippenham) (664)

		vote	share
Maclaren D.	Ind	0	0.0
		Turnout	0.0 0.0

No. 4 (Sutton) (1609)

		vote	share
Read P.	Ind	317	41.3
Darby C.	Ind	248	32.3
Young M. Ms.	Ind	203	26.4
		Turnout	47.7 9.0

No. 5 (Downham) (1320)

		vote	share
White A.	Ind	315	87.3
Fletcher D.	Ind	46	12.7
		Turnout	27.3 74.5

No. 7 (Mepal) (862)

		vote	share
Tash F.	Ind	295	54.5
Harrison F.	Ind	246	45.5
		Turnout	62.8 9.1

Soham (4666)⁴

		vote	share
West M. Ms.	Ind	426	54.7
Leonard K.	Ind	409	-
Gidney W.	Ind	362	-
Kirk P. Ms.	Lab	353	45.3
Trinder K.	Ind	299	-
Peent S. Ms.	Lab	295	-
Hempstead C.	Lab	243	-
		Turnout	16.7 9.4

Stretham (1056)

		vote	share
Veal E.	Ind	319	56.9
Edgeley E.	Ind	242	43.1
		Turnout	53.1 13.7

The Swaffhams (1200)

		vote	share
Cook M. Ms.	Ind	265	37.7
Scott G. Ms.	Ind	199	28.3
Cole E.	Ind	152	21.7
Bulleid W.	Ind	86	12.3
		Turnout	58.5 9.4

Witchford (835)

		vote	share
Ward D.	Ind	0	0.0
		Turnout	0.0 0.0

Woodditton (1180)

		vote	share
Smith J. Ms.	Ind	0	0.0
		Turnout	0.0 0.0

East Cambridgeshire - 1976

Bottisham (1654)²

		vote	share
Hatley C. Ms.	Con	430	50.2
Ingham G.*	Ind	427	49.8
Camish D.*	Ind	379	-
Buchanan H. Ms.	Con	338	-
		Turnout	54.6 0.4

Burwell (2987)³

		vote	share
Gathercole A.*	Ind	654	46.3
Perkins L.	Con	519	36.7
Barton A.*	Con	510	-
Bowers E.	Ind	369	-
Pott P. Ms.	Lab	240	17.0
		Turnout	33.2 9.6

Cheveley (1602)²

		vote	share
Horwood-Smart S. Ms.	Ind	713	100.0
Bridge P.*	Ind	588	-
Williams M.	Ind	224	-
		Turnout	55.1 27.2

Dullingham Villages (1334)

		vote	share
Kaye D.*	Ind	0	0.0
		Turnout	0.0 0.0

Haddenham (2200)²

		vote	share
Bethell O.	Ind	541	70.8
Warren P.	Ind	480	-
Seaman J.	Ind	412	-
Fryer M. Ms.	Lab	223	29.2
Greasley B. Ms.	Lab	149	-
		Turnout	47.6 41.6

Isleham (1124)

		vote	share
Wells R.*	Ind	345	80.2
Millar A. Ms.	Lab	85	19.8
		Turnout	39.9 60.5

Littleport (4072)⁴

		vote	share
Crane J.*	Ind	776	100.0
Wright B.*	Ind	769	-
Wright A.	Ind	748	-
Crabb H.*	Ind	724	-
Gill R. Ms.*	Ind	702	-
Gowling J.	Ind	313	-
		Turnout	36.7 89.0

No. 1 (Ely Urban) (7608)⁷

		vote	share
Pope A.*	Ind	1,486	45.1
Beckett J.*	Ind	1,348	-
Cornwell S.*	Ind	1,295	-
Rouse M.*	Ind Con	1,284	39.0
Halls R.*	Ind	970	-
Langford L.	Ind	909	-
Oakey F. Ms.*	Ind	890	-
Cornwell L.	Ind	858	-
Newman A.*	Lab	524	15.9
		Turnout	27.4 6.1

No. 15 (Fordham) (1494)

		vote	share
Fordham J.	Ind	0	0.0
		Turnout	0.0 0.0

No. 18 (Chippenham) (597)

		vote	share
McLaren D.*	Con	0	0.0
		Turnout	0.0 0.0

No. 4 (Sutton) (1733)

		vote	share
Read P.*	Ind	0	0.0
		Turnout	0.0 0.0

No. 5 (Downham) (1353)

		vote	share
White A.*	Ind	0	0.0
		Turnout	0.0 0.0

No. 7 (Mepal) (883)

		vote	share
Constable W.	Ind	0	0.0
		Turnout	0.0 0.0

Soham (4728) ⁴			
		vote	share
Leonard K.*	Ind	797	46.2
Gidney W.*	Ind	790	-
Kirk P. Ms.*	Ind Soc	669	38.8
Neville J. Ms.	Ind	643	-
Hempstead C.	Lab	259	15.0
Turnout		24.6	7.4

Stretham (1085)			
		vote	share
Veal E.*	Ind	379	57.1
Langford E.	Ind	251	37.8
Prosser J.	Lab	34	5.1
Turnout		62.0	19.3

The Swaffhams (1207)			
		vote	share
Cook M. Ms.*	Ind	0	0.0
Turnout		0.0	0.0

Witchford (977)			
		vote	share
Allen C.	Ind	0	0.0
Turnout		0.0	0.0

Woodditton (1287)			
		vote	share
Smith J. Ms.*	Ind	0	0.0
Turnout		0.0	0.0

East Cambridgeshire - 1979

Bottisham (1812) ²			
		vote	share
Fitch H.	Ind	0	-
Ingham G.*	Ind	0	0.0
Turnout		0.0	0.0

Burwell (3030) ³			
		vote	share
Brooks H.	Con	1,201	56.7
Perkins L.*	Con	1,109	-
Barton A.*	Ind	918	43.3
Parker I.	Con	882	-
Barton I. Ms.	Ind	859	-
Turnout		69.9	13.4

Cheveley (1623) ²			
		vote	share
Bridge P.*	Ind	0	-
Horwood-Smart S. Ms.*	Ind	0	0.0
Turnout		0.0	0.0

Dullingham Villages (1431)			
		vote	share
Kaye D.*	Ind	0	0.0
Turnout		0.0	0.0

Haddenham (2249) ²			
		vote	share
Bethell O.*	Ind	1,126	71.6
Warren P.*	Ind	1,114	-
Fryer M. Ms.	Lab	446	28.4
Turnout		69.9	43.3

Isleham (1228)			
		vote	share
Williams M. Ms.	Ind	0	0.0
Turnout		0.0	0.0

Littleport (4117) ⁴			
		vote	share
Wright A.*	Ind	1,766	100.0
Wright B.*	Ind	1,650	-
Crane J.*	Ind	1,590	-
Ware A.	Ind	1,157	-
Brown F.	Ind	1,066	-
Layn K.	Ind	892	-
Turnout		42.9	74.7

No. 1 (Ely Urban) (7765) ⁷			
		vote	share
Pope A.*	Ind	3,740	46.2
Rouse M.*	Ind Con	2,886	35.7
Beckett J.*	Ind	2,847	-
Langford L.*	Ind	2,022	-
Taylor R.	Ind	1,981	-
Cornwell L.*	Ind	1,938	-
Mitcham A.	Ind Con	1,902	-
Tucker P.	Ind	1,759	-
Oakey F. Ms.*	Ind	1,675	-
Starkey P. Ms.	Lab	1,469	18.1
Turnout		104.2	10.5

No. 15 (Fordham) (1494)			
		vote	share
Newport J.	Ind	0	0.0
Turnout		0.0	0.0

No. 18 (Chippenham) (567)			
		vote	share
Neal L.	Ind	0	0.0
Turnout		0.0	0.0

No. 4 (Sutton) (1820)			
		vote	share
Read P.*	Ind	0	0.0
Turnout		0.0	0.0

No. 5 (Downham) (1466)			
		vote	share
White A.*	Ind	0	0.0
Turnout		0.0	0.0

No. 7 (Mepal) (928)			
		vote	share
Constable W.*	Ind	0	0.0
Turnout		0.0	0.0

Soham (5148) ⁴			
		vote	share
Peers J.	Ind	0	0.0
Gidney W.*	Ind	0	-
Leonard K.*	Ind	0	-
Kirk P. Ms.*	Ind Soc	0	0.0
Turnout		0.0	0.0

Stretham (1165)			
		vote	share
Morley J. Ms.	Ind	423	81.0
Clayton-Smith A. Ms.	Ind	99	19.0
Turnout		44.8	62.1

The Swaffhams (1296)			
		vote	share
Cook M. Ms.*	Ind	0	0.0
Turnout		0.0	0.0

Witchford (980)			
		vote	share
Allen C.*	Ind	0	0.0
Turnout		0.0	0.0

Woodditton (1404)			
		vote	share
Smith J. Ms.*	Ind	0	0.0
Turnout		0.0	0.0

East Cambridgeshire - 1983

Bottisham (1868) ²			
		vote	share
Fitch H.	Ind Lib	713	50.8
Ingham G.	Ind	362	25.8
Aves L. Ms.	Con	328	23.4
Alderson F.	Ind	291	-
Turnout		75.1	25.0

Burwell (3175) ³			
		vote	share
Fuller R.	Con	776	55.3
Brooks H.	Con	682	-
Taylor C.	Lib	627	44.7
Perkins L.	Con	608	-
Turnout		44.2	10.6

Cheveley (1662) ²			
		vote	share
Bridge P.	Ind	0	-
Horwood-Smart S. Ms.	Ind	0	0.0
Turnout		0.0	0.0

Downham (2003) ²			
		vote	share
Constable W.	Ind	0	-
White A.	Ind	0	0.0
Turnout		0.0	0.0

Dullingham Villages (1495)			
		vote	share
Misson T. Ms.	Ind SDP	391	50.1
Kay D.	Ind	389	49.9
Turnout		52.2	0.3

Ely Northern (2290) ²			
		vote	share
Rouse M.	Ind Con	430	47.3
Sharpe M.	Lab	242	26.6
Dyall W.	Lab	241	-
Langford L.	Ind	237	26.1
Cornwell L.	Ind	195	-
Turnout		39.7	20.7

Ely Southern (2019) ²			
		vote	share
Beckett J.	Ind	384	54.4
Meadows R.	Ind Con	322	45.6
Webster J.	Ind	283	-
Oakey F. Ms.	Ind	222	-
Turnout		35.0	8.8

Ely West (3727) ³			
		vote	share
Pope A.	Ind	813	72.8
Hobbs M.	Ind	721	-
Mitcham A.	Ind	578	-
Willson J.	Ind	408	-
Jeffries C.	Lab	303	27.2
Turnout		29.9	45.7

Fordham Villages (2152) ²			
		vote	share
Neal L.	Ind	0	0.0
Newport J.	Ind Con	0	0.0
Turnout		0.0	0.0

Haddenham (3576) ²			
		vote	share
Bethell O.	Ind	0	-
Warren P.	Ind	0	0.0
Turnout		0.0	0.0

Isleham (1301)			
		vote	share
Thompson M. Ms.	Ind	0	0.0
Turnout		0.0	0.0

Littleport (4321) ⁴			
		vote	share
Harley P.	Ind Lib	1,165	59.1
Crane J.	Ind	806	40.9
Wright A.	Ind	803	-
Wright B.	Ind	766	-
Brown F.	Ind	437	-
Hiblin C.	Ind	314	-
Gowing J.	Ind	273	-
Turnout		45.6	18.2

Soham (5195) ⁵			
		vote	share
Kirk P. Ms.	Ind	957	42.0
Martin V. Ms.	Con	929	40.7
Gidney W.	Ind	907	-
Taylor C.	Ind	884	-
Neville J. Ms.	Ind	834	-
Chadwick J. Ms.	Lab	395	17.3
Hempstead C.	Lab	389	-
Hempstead M. Ms.	Lab	361	-
Burns A.	Lab	322	-
Rowlands B.	Lab	319	-
Turnout		43.9	1.2

Stretham (1238)			
		vote	share
Langford L.	Ind	263	72.1
Stevens M.	Ind	102	27.9
Turnout		29.5	44.1

Sutton (2325) ²			
		vote	share
Read P.	Ind Con	263	72.1
Witts A.	Ind	102	27.9
Turnout		15.7	44.1

The Swaffhams (1338)			
		vote	share
Cook M. Ms.	Ind	573	60.1
Woollard G.	Con	380	39.9
Turnout		71.2	20.3

Witchford (1028)			
		vote	share
Bradshaw A.	Ind	0	0.0
Turnout		0.0	0.0

Woodditton (1480)			
		vote	share
Mundford T.	Ind SDP	0	0.0
Turnout		0.0	0.0

East Cambridgeshire - 1987

Bottisham (1951) ²			
		vote	share
Woollard G.	Con	725	50.9
Fitch H.*	All	698	49.1
Bond R.	All	570	-
Shulver S. Ms.	Con	554	-
Turnout		72.9	1.9

Burwell (3292) ³			
		vote	share
Brooks H.*	Ind	731	33.0
Fuller R.*	Con	724	32.7
Durrant C.	Ind	687	-
Taylor C.*	All	629	28.4
Townsend J.	All	529	-
Turner A. Ms.	All	448	-
Gower R.	Lab	130	5.9
Turnout		67.3	0.3

Cheveley (1793) ²			
		vote	share
Horwood-Smart S. Ms.*	Ind	0	0.0
Bridge P.*	Ind	0	-
Turnout		0.0	0.0

Downham (2187) ²			
		vote	share
White A.*	Ind	728	100.0
Hall M.	Ind	467	-
Duffield M. Ms.	Ind	438	-
Turnout		33.3	0.5

Dullingham Villages (1560)			
		vote	share
Misson T. Ms.*	Ind All	576	70.0
Turner E. Ms.	Ind	247	30.0
Turnout		52.8	40.0

Ely Northern (2747) ²			
		vote	share
Pearson M.	All	0	0.0
Rouse M.*	Ind Con	0	0.0
Turnout		0.0	0.0

Ely Southern (2116) ²			
		vote	share
Ison J.	All	602	40.6
Gordon-Potts M. Ms.	Ind	444	29.9
Meadows R.*	Ind Con	437	29.5
Turnout		35.0	10.7

Ely West (3872) ³			
		vote	share
Pope A.*	Ind	960	36.6
Dawes A.	All	946	36.0
Hobbs M.*	Ind	872	-
Daters G.	Con	719	27.4
Willson J.	Ind	564	-
Turnout		67.8	0.5

Fordham Villages (2186) ²			
		vote	share
Neal L.*	Ind	0	0.0
Newport J.*	Ind Con	0	0.0
Turnout		0.0	0.0

Haddenham (2661) ²			
		vote	share
Bethell O.*	Ind	814	100.0
Warren P.*	Ind	707	-
Marsh J.	Ind	418	-
Turnout		30.6	100.0

Isleham (1517)			
		vote	share
Woodbridge E.	Ind	385	55.6
Garbett W. Ms.	All	307	44.4
Turnout		45.6	11.3

Littleport (4633) ⁴			
		vote	share
Wright A.*	Ind	797	100.0
Wright B.*	Ind	787	-
Crane J.*	Ind	731	-
Brown F.	Ind	617	-
Gowing J.	Ind	402	-
Turnout		17.2	61.5

Soham (6161) ⁵			
		vote	share
Isaacson E.	Lab	1,095	35.0
Kirk P. Ms.*	Ind	1,042	33.3
Razzell J. Ms.	All	995	31.8
Seal E.	Ind	776	-
Tyler R.	Ind	687	-
Hempstead C.	Lab	461	-
Turnout		50.8	1.7

Stretham (1460)			
		vote	share
Seaman J.	Con	373	61.3
Fordham W.	Ind	235	38.7
Turnout		41.6	22.7

Sutton (2690) ²			
		vote	share
Oliver R.	Ind	876	54.3
Read P.*	Ind Con	738	45.7
Read R.	Ind	368	-
Turnout		60.0	8.6

The Swaffhams (1470)			
		vote	share
Cook M. Ms.*	Ind	0	0.0
Turnout		0.0	0.0

Witchford (1115)			
		vote	share
Bradshaw A.*	Ind	0	0.0
Turnout		0.0	0.0

Woodditton (1535)			
		vote	share
Mundford T.*	Ind All	0	0.0
Turnout		0.0	0.0

East Cambridgeshire - 1991

Bottisham (2022) ²			
		vote	share
Fitch H.*	LD	969	64.3
Leake V. Ms.	LD	770	-
Woollard G.	Con	537	35.7
Turnout		66.4	28.7

Burwell (3554) ³			
		vote	share
Fuller R.*	Ind	950	49.4
Brooks H.*	Ind	804	-
Durrant C.*	Ind	775	-
Townsend J.	LD	644	33.5
Gower R.	Lab	329	17.1
Turnout		43.2	15.9

Cheveley (1792) ²			
		vote	share
Horwood-Smart S. Ms.*	Ind	553	73.6
Bridge P.*	Ind	437	-
Mahon B. Ms.	Lab	198	26.4
Rogers-Ross E. Ms.	Ind	172	-
Turnout		48.0	47.3

Downham (2264) ²			
		vote	share
White A.*	Ind	0	0.0
Hall M.*	Ind Con	0	0.0
Turnout		0.0	0.0

Dullingham Villages (1585)			
		vote	share
Misson T. Ms.*	Ind	450	75.6
Visis C.	Lab	145	24.4
Turnout		37.9	51.3

Ely Northern (2995) ²			
		vote	share
Bebington W.	Ind	729	59.1
Richards M. Ms.	Con	505	40.9
Rouse M.*	Ind	482	-
Riach I.	Ind	245	-
Turnout		41.5	18.2

Ely Southern (2110) ²			
		vote	share
Meadows R.	Ind	0	0.0
Adey D.	LD	0	0.0
	Turnout	0.0	0.0

Ely West (3932) ³			
		vote	share
Friend-Smith Ms.	LD	0	0.0
Pope A.*	Ind	0	-
Willson J.	Ind	0	0.0
	Turnout	0.0	0.0

Fordham Villages (2391) ²			
		vote	share
Newport J.*	Ind	653	69.9
Neal L.*	Ind	620	-
Bugg B.	Ind	283	-
Sankey J. Ms.	Lab	281	30.1
	Turnout	47.3	39.8

Haddenham (2964) ²			
		vote	share
Bethell O.*	Ind	601	55.8
Warren P.*	Ind	566	-
Marsh J.	Green	259	24.0
Freed M.	Lab	217	20.1
	Turnout	34.8	31.8

Isleham (1451)			
		vote	share
Woodbridge E.*	Ind	0	0.0
	Turnout	0.0	0.0

Littleport (4828) ⁴			
		vote	share
Wright A.*	Ind	907	42.6
Wright B.*	Ind	866	-
Brown F.*	Con	771	36.2
Crane J.*	Ind	767	-
Otis C.	Green	450	21.1
	Turnout	30.3	6.4

Soham (6309) ⁵			
		vote	share
Kirk P. Ms.*	Ind	0	-
Seal E.*	Ind	0	0.0
Palmer J.	Con	0	0.0
Hempstead C.	Lab	0	0.0
Isaacson E.*	Ind	0	-
	Turnout	0.0	0.0

Stretham (1502)			
		vote	share
Seaman J.*	Con	338	52.6
Owen D.	Lab	174	27.1
Fordham W.	Ind	130	20.2
	Turnout	42.8	25.5

Sutton (2749) ²			
		vote	share
Oliver R.*	Ind	706	43.8
Read P.*	Con	656	40.7
Tolley S. Ms.	Lab	250	15.5
Dobbyne A.	Lab	217	-
	Turnout	41.3	3.1

The Swaffhams (1418)			
		vote	share
Cook M. Ms.*	Ind	0	0.0
	Turnout	0.0	0.0

Witchford (1217)			
		vote	share
Barber G.	Ind	0	0.0
	Turnout	0.0	0.0

Woodditton (1565)			
		vote	share
Peers J.	Con	447	69.3
Anderton T.	Lab	198	30.7
	Turnout	41.2	38.6

East Cambridgeshire - 1995

Bottisham (2103) ²			
		vote	share
Fitch H.*	LD	0	-
Leak V. Ms.*	LD	0	0.0
	Turnout	0.0	0.0

Burwell (3763) ³			
		vote	share
Williams H. M Ms.	LD	0	0.0
Durrant C.*	Ind	0	0.0
Brooks H.*	Ind	0	-
	Turnout	0.0	0.0

Cheveley (1833) ²			
		vote	share
Twentyman E.	LD	562	47.4
Bridge P.*	Ind	393	33.1
Mahon B. Ms.	Lab	231	19.5
	Turnout	43.4	14.2

Downham (2335) ²			
		vote	share
White A.*	Ind	674	70.9
Hall M.*	Ind	539	-
Humphreys-Jones J. Ms.	LD	276	29.1
	Turnout	39.4	41.9

Dullingham Villages (1608)			
		vote	share
Vale M. Ms.*	Ind	397	64.0
Anderton T.	Lab	223	36.0
	Turnout	38.6	28.1

Ely Northern (3190) ²			
		vote	share
Higginson S.*	LD	779	38.1
Bebbington W.*	Ind	511	25.0
Coupe B.	Lab	419	20.5
Richards M. Ms.	Con	335	16.4
	Turnout	41.9	13.1

Ely Southern (2127) ²			
		vote	share
Adey D.*	LD	606	48.8
Hobbs R.	Ind	390	31.4
Smithson S.	LD	365	-
Pickess W.	Con	247	19.9
Meadows R.	Ind	164	-
	Turnout	47.9	17.4

Ely West (3969) ³			
		vote	share
Friend-Smith S. Ms.*	LD	1,144	42.2
Smith J.	LD	661	-
Pope A.*	Ind	658	24.3
Willson J.	Ind	529	-
Hill G.	Lab	519	19.2
Mitchell M.	Con	387	14.3
	Turnout	43.7	17.9

Fordham Villages (2383) ²			
		vote	share
Bugg B.	Ind	0	-
Neal L.*	Ind	0	0.0
	Turnout	0.0	0.0

Haddenham (2979) ²			
		vote	share
Bethell O.*	Ind	554	41.6
Warren P.*	Ind	431	-
Smith S.	Con	323	24.3
Marsh J.	Green	285	21.4
Morrison N.	LD	169	12.7
Langston D.	Ind	100	-
	Turnout	37.4	17.4

Isleham (1463)			
		vote	share
Woodbridge E.*	Ind	0	0.0
	Turnout	0.0	0.0

Littleport (5005) ⁴			
		vote	share
Crane J.*	Ind	0	0.0
Brown F.*	Ind Con	0	0.0
Wright A.*	Ind	0	-
Pye D.*	LD	0	0.0
	Turnout	0.0	0.0

Soham (6747) ⁵			
		vote	share
Hart L.	Ind	973	37.2
Isaacson E.*	Ind	919	-
Hempstead C.*	Lab	832	31.8
Palmer J.*	Con	808	30.9
Tuite P. Ms.	Lab	700	-
Hill W.	Lab	699	-
Seal E.	Ind	613	-
Tuite T.	Lab	586	-
Meares P.	Lab	541	-
Hinsley A.	Ind	429	-
	Turnout	29.2	5.4

Stretham (1499)			
		vote	share
Seaman J.*	Ind	377	50.2
Hunns D.	LD	374	49.8
	Turnout	51.1	0.4

Sutton (2821) ²			
		vote	share
Oliver R.*	Ind	500	32.5
Owen D.	Lab	462	30.0
Machin D.	Lab	425	-
Darby M.	Ind Con	410	26.7
Ward P.	LD	166	10.8
	Turnout	39.2	2.5

The Swaffhams (1464)			
		vote	share
Webb N.	LD	0	0.0
	Turnout	0.0	0.0

Witchford (1290)			
		vote	share
Frankland G.*	LD	0	0.0
	Turnout	0.0	0.0

Woodditton (1534)			
		vote	share
Buckley G.	LD	358	60.3
Lander D.	Con	236	39.7
	Turnout	39.2	20.5

East Cambridgeshire - 1999

Bottisham (2160) ²			
		vote	share
Fitch H.*	LD	753	81.1
Leake V. Ms.*	LD	740	-
O'Dell S.	Lab	176	18.9
	Turnout	42.2	62.1

Burwell (4225)³			
		vote	share
Williams H. Ms.*	LD	689	42.1
Durrant C.*	Ind	675	41.2
Brooks H.*	Ind	667	-
Evans M.	Lab	273	16.7
	Turnout	26.4	0.9
Cheveley (1864)²			
		vote	share
Twentyman E.*	LD	541	59.4
Lewis P.	LD	335	-
Bridge P.*	Ind	275	30.2
Segger J. Ms.	Lab	95	10.4
	Turnout	38.5	29.2
Downham (2362)²			
		vote	share
Hall C. Ms.*	Ind	593	67.5
White A.*	Ind	559	-
Jones J. Ms.	LD	165	18.8
Pavey S.	Lab	121	13.8
Pleydell P. Ms.	LD	99	-
	Turnout	36.1	48.7
Dullingham Villages (1653)			
		vote	share
Gibb J.	LD	419	60.0
Vale M. Ms.*	Ind	279	40.0
	Turnout	42.3	20.1
Ely Northern (3551)²			
		vote	share
Higginson S.*	LD	860	71.8
Waterfall J.	LD	797	-
Russell M. Ms.	Con	338	28.2
Griffith D.	Con	337	-
	Turnout	34.4	43.6
Ely Southern (2254)²			
		vote	share
Adey D.*	LD	653	69.9
Coppola J.	LD	564	-
Borland J.	Ind	281	30.1
	Turnout	39.5	39.8
Ely West (4429)³			
		vote	share
Friend-Smith S. Ms.*	LD	1,304	63.5
Friend-Smith J.	LD	1,064	-
Allen I.	LD	876	-
Willson J.	Ind	574	28.0
Smith J.*	Ind	410	-
Pope A.*	Ind	358	-
Carter M. Ms.	Green	175	8.5
	Turnout	39.1	35.6
Fordham Villages (2537)²			
		vote	share
Abbott R.*	LD	662	63.1
Hancock M.	LD	485	-
Neal L.*	Ind	290	27.6
Scott P.	Lab	97	9.2
	Turnout	35.2	35.5
Haddenham (3235)²			
		vote	share
Warren P.*	Ind	406	30.8
Bethnell O.*	Ind	353	-
Smith S.	Con	341	25.9
Hearne-			
Casapieri V. Ms.	Con	298	-
Marsh J.	Green	296	22.5
Spencer-Jones V. Ms.	Lab	176	13.4
Saunderson M.	Green	142	-
Garrett E.	LD	98	7.4
	Turnout	35.7	4.9
Isleham (1559)			
		vote	share
Woodbridge E.*	Ind	349	85.7
Mooney H.	LD	58	14.3
	Turnout	26.1	71.5

Littleport (5216)⁴			
		vote	share
Wright A.*	Ind	524	55.2
Kerridge S. Ms.	Ind	499	-
Hayes B.	Ind	433	-
Morrison N.*	LD	425	44.8
Bailey P.	LD	398	-
Pearce H.	LD	383	-
Vallence E. Ms.	LD	378	-
	Turnout	19.5	10.4
Soham (7083)⁵			
		vote	share
Fordham C.	Ind	782	38.0
Hart L.*	LD	714	34.7
Palmer J.*	Ind	693	-
Hempsted C.*	Lab	560	27.2
Tuite P. Ms.*	Lab	509	-
Ross F. Ms.	Lab	498	-
Davies H.	LD	484	-
Brooks G.	LD	479	-
Tuite T.	Lab	445	-
	Turnout	21.3	3.3
Stretham (1773)			
		vote	share
McKay-Rae F. Ms.	LD	490	69.1
Seaman J.*	Ind	219	30.9
	Turnout	40.4	38.2
Sutton (3031)²			
		vote	share
Steward G.*	Lab	461	47.6
Owen D.*	Lab	459	-
Cooper M.	Ind	394	40.7
Marritt S.	LD	113	11.7
Smithson S.	LD	111	-
	Turnout	30.1	6.9
The Swaffhams (1537)			
		vote	share
Cain C. Ms.	LD	0	0.0
	Turnout	0.0	0.0
Witchford (1604)			
		vote	share
Frankland G.*	LD	482	72.8
Woodbine M. Ms.	Con	180	27.2
	Turnout	41.6	45.6
Woodditton (1581)			
		vote	share
Garner E. Ms.	Con	266	58.5
France A.	LD	189	41.5
	Turnout	28.8	16.9
East Cambridgeshire - 2003			
Bottisham (2871)²			
		vote	share
McLane C.	Con	583	44.2
Leake V. Ms.*	LD	561	42.5
Pencheon D.	LD	454	-
O'Dell S.	Lab	176	13.3
	Turnout	39.3	1.7
Burwell (4518)³			
		vote	share
Williams H. Ms.*	LD	671	34.4
Reader D.	Ind	662	33.9
Philpott P.	LD	447	-
Edwards L. Ms.	Con	438	22.5
Hopper A. Ms.	LD	405	-
Alderson A.	Con	388	-
Chinery T.	Ind	306	-
Southall C.	Green	179	9.2
	Turnout	29.7	0.5

Cheveley (3042)²			
		vote	share
Parsons D.	Con	605	61.7
Cresswell P.	Con	602	-
Tilley D.	LD	240	24.5
Broadway A.	LD	200	-
Segger J. Ms.	Lab	135	13.8
	Turnout	33.0	37.2
Downham Villages (3185)²			
		vote	share
White A.*	Ind	715	38.9
Daters B. Ms.	Con	477	26.0
Bailey P.	LD	474	25.8
Hubbard G.	LD	252	-
Pavey S.	Lab	170	9.3
	Turnout	39.8	13.0
Dullingham Villages (1547)			
		vote	share
Davidson A. Ms.	Con	412	62.3
Gibb J.*	LD	249	37.7
	Turnout	43.2	24.7
Ely East (2924)²			
		vote	share
Ashton B.	Con	468	38.9
Bell N.	LD	452	37.6
Mountford G.	LD	414	-
Mair R.	Con	350	-
Borland J.	Ind	166	13.8
Carter-Marsh A. Ms.	Green	116	9.7
	Turnout	35.5	1.3
Ely North (3803)³			
		vote	share
Bunting M.	Con	556	38.9
Higginson S.*	LD	527	36.9
Waterfall J.*	LD	487	-
Hunt W.	Con	484	-
Bradney R.	Con	484	-
Bean B. Ms.	LD	474	-
Spencer-			
Barrows V. Ms.	Lab	205	14.3
Spencer K. Ms.	Green	142	9.9
	Turnout	33.2	2.0
Ely South (1969)²			
		vote	share
Friend-Smith J.*	LD	317	47.8
Pickess W.	Con	292	44.0
Rogerson T.	Con	281	-
Das S. Ms.	LD	262	-
Shaw J. Ms.	Green	54	8.1
	Turnout	32.9	3.8
Ely West (3318)²			
		vote	share
Friend-Smith S. Ms.*	LD	697	51.3
Hobbs R.	Con	528	38.8
Marlow F. Ms.	LD	495	-
Russell M. Ms.	Con	433	-
Carter M. Ms.	Green	135	9.9
	Turnout	36.2	12.4
Fordham Villages (2653)²			
		vote	share
Abbott R.*	LD	527	64.0
Allan M.	LD	401	-
Morris C.	Con	296	36.0
	Turnout	28.6	28.1
Haddenham (4261)³			
		vote	share
Allen I.*	LD	707	43.7
Sillett P. Ms.	LD	607	-
Wilson G.	LD	605	-
Smith S.	Con	536	33.1
Rogers P.	Con	468	-
Woodbine M. Ms.	Con	432	-
Marsh J.	Green	375	23.2
Saunderson M.	Green	233	-
Wood M.	Green	160	-
	Turnout	36.1	10.6

Isleham (1650)			
		vote	share
Beckett D.	Ind	309	65.2
Thompson H. Ms.	LD	165	34.8
Turnout		28.8	30.4

Littleport East (3428) ²			
		vote	share
Brown F.	Con	435	44.8
Wright A.*	Ind	397	40.9
Hayes B.*	Ind	260	-
Palmer R. Ms.	LD	139	14.3
Greenwood J.	LD	112	-
Norman G.	Ind	93	-
Turnout		24.4	3.9

Littleport West (1902) ²			
		vote	share
Morrison N.*	LD	201	37.2
Rodrigues L.	LD	200	-
Murfitt D.	Ind	185	34.2
Binks N.	Con	155	28.7
Kerridge S. Ms.*	Ind	104	-
Turnout		25.3	3.0

Soham North (2851) ²			
		vote	share
Fordham C.*	Ind	252	48.3
Palmer J.*	Ind	228	-
Diver P.	LD	151	28.9
Ginn G.	Lab	119	22.8
Dwyer M. Ms.	LD	119	-
Turnout		17.4	19.3

Soham South (4561) ³			
		vote	share
Parramint A.	Con	486	37.5
Humphreys J.*	Con	474	-
Duckworth M.	Con	398	-
Gibbon P. Ms.	LD	348	26.8
Beer P.	LD	253	-
Ross F. Ms.	Lab	236	18.2
Rouse M.	Ind	227	17.5
Turvey S. Ms.	LD	135	-
Turnout		22.4	10.6

Stretham (2760) ²			
		vote	share
Seaman J.	Con	478	52.4
McKay-Rae F. Ms.*	LD	434	47.6
Fentiman S. Ms.	LD	344	-
Turnout		31.9	4.8

Sutton (2597) ²			
		vote	share
Read P.	Con	492	72.2
Pleydell P. Ms.	LD	189	27.8
Jones J. Ms.	LD	185	-
Turnout		25.6	44.5

The Swaffhams (1522)			
		vote	share
Cane C. Ms.*	LD	513	85.6
Wilson S. Ms.	Lab	86	14.4
Turnout		41.5	71.3

East Cambridgeshire - 2007

Bottisham (2994) ²			
		vote	share
Bryant C. Ms.	LD	769	53.0
Stevens R.	LD	731	-
McLean C.*	Con	570	39.3
Le-Ggatt L.	Con	501	-
O'Dell S.	Lab	111	7.7
Turnout		47.1	13.7

Burwell (4766) ³			
		vote	share
Brown D.	Con	809	35.0
Williams H. Ms.*	LD	790	34.2
Edwards L. Ms.	Con	741	-
Eardley S.	Con	700	-
Philpott P.*	LD	623	-
Chapman G.	LD	594	-
Reader D.*	Ind	560	24.2
Wilson C.	Lab	152	6.6
Turnout		38.4	0.8

Cheveley (3127) ²			
		vote	share
Cresswell P.*	Con	794	76.7
Poole C.*	Con	745	-
Fentiman S. Ms.	LD	241	23.3
Turnout		34.3	53.4

Downham Villages (3390) ²			
		vote	share
Bailey A. Ms.	Con	665	45.8
Goode T.	Con	653	-
Winters O.	Ind	497	34.2
Wilson L. Ms.	LD	291	20.0
Haley B.	LD	277	-
Turnout		41.2	11.6

Dullingham Villages (1561)			
		vote	share
Davidson A. Ms.*	Con	469	77.3
Beer P.	LD	138	22.7
Turnout		39.3	54.5

Ely East (3038) ²			
		vote	share
Ashton B.*	Con	582	41.0
Petts J. Ms.	Con	527	-
Griffiths G. Ms.	LD	468	32.9
Bell N.*	LD	453	-
Burton W.	Ind	218	15.3
Lockyer K. Ms.	Green	153	10.8
Turnout		42.3	8.0

Ely North (4606) ³			
		vote	share
Rouse M.	Con	647	35.7
Broadhurst A. Ms.	Con	631	-
Bradney R.	Con	573	-
Bunting M.*	Ind	475	26.2
Griffin-Singh E. Ms.	Ind	401	-
Das S. Ms.	LD	366	20.2
Cole N.	LD	358	-
Allen A.	Green	324	17.9
Griffiths D.	LD	311	-
Turnout		33.2	9.5

Ely South (2664) ²			
		vote	share
Friend-Smith J.*	LD	572	49.2
Wilcox D.	LD	505	-
Kelleway A.	Con	452	38.9
Pickess W.*	Con	439	-
Spencer K. Ms.	Green	139	12.0
Turnout		42.0	10.3

Ely West (3398) ²			
		vote	share
Friend-Smith S. Ms.*	LD	829	52.2
Austen S. Ms.	LD	685	-
Hobbs R.*	Con	571	36.0
Phillips C.	Con	436	-
Allen A.	Green	188	11.8
Turnout		41.1	16.2

Fordham Villages (2762) ²			
		vote	share
Abbott J.*	LD	542	57.1
Allan M.*	LD	477	-
Morris C.	Con	407	42.9
Gardner R.	Con	391	-
Turnout		34.2	14.2

Haddenham (4541) ³			
		vote	share
Wilson G.*	LD	1,065	53.8
Allen I.*	LD	1,030	-
Wilson P. Ms.*	LD	1,006	-
Ray C.	Con	665	33.6
Smith S.	Con	660	-
Woodbine M. Ms.	Con	649	-
Carter L. Ms.	Green	249	12.6
Turnout		42.9	20.2

Isleham (1739)			
		vote	share
Beckett D.*	Ind	452	75.2
Richmond C.	LD	149	24.8
Turnout		35.1	50.4

Littleport East (3742) ²			
		vote	share
Brown F.*	Con	728	45.6
Wright A.*	Ind	622	38.9
Broadley A.	LD	248	15.5
Crichton J. Ms.	LD	166	-
Turnout		27.9	6.6

Littleport West (2178) ²			
		vote	share
Ambrose-Smith C. Ms.	Con	292	51.0
Morrison N.*	LD	281	49.0
Rodrigues L.*	LD	260	-
Cox P.	Con	245	-
Turnout		27.3	1.9

Soham North (3194) ²			
		vote	share
Palmer J.	Con	581	57.5
Cornell T.	Con	422	-
Fordham C.*	Ind	274	27.1
Palmer J.*	Ind	175	57.5
Bruce D. Ms.	LD	155	15.3
Gold B. Ms.	LD	68	-
Turnout		28.0	30.4

Soham South (4638) ³			
		vote	share
Parramint A.*	Con	577	43.1
Humphreys J.*	Con	525	-
Duckworth M.*	Con	463	-
Warner C.	LD	412	30.7
Castling M. Ms.	LD	397	-
Jugg L. Ms.	Ind	351	26.2
Martin D. Ms.	Ind	349	-
Pallett A. Ms.	LD	347	-
Kirkham J.	Ind	263	-
Turnout		29.4	12.3

Stretham (2962) ²			
		vote	share
Hunt B.	Con	688	62.5
Seaman J.*	Con	613	-
McKay-Rae F. Ms.*	LD	412	37.5
Mittins A.	LD	298	-
Turnout		37.6	25.1

Sutton (2804) ²			
		vote	share
Read P.*	Con	513	51.1
Moakes P.	Con	414	-
Dewar I.	LD	364	36.3
Pleydell P. Ms.*	LD	258	-
Shaw J. Ms.	Green	127	12.6
Turnout		32.1	14.8

The Swaffhams (1589)			
		vote	share
Alderson A.*	Con	438	62.2
Jost T. Ms.	LD	222	31.5
Wilson S. Ms.	Lab	44	6.3
Turnout		44.4	30.7

East Cambridgeshire - 2011

Bottisham (3064)²

		vote	share
Stevens R.*	LD	644	41.6
Ellis K.	Con	626	40.4
Barnard S. Ms.	Con	607	-
Aronson S.	LD	588	-
O'Dell S.	Lab	279	18.0
	Turnout	52.3	1.2

Burwell (4816)³

		vote	share
Brown D.*	Con	1,148	46.6
Edwards L. Ms.*	Con	991	-
Williams H. Ms.*	LD	941	38.2
Wilson B. Ms.	LD	584	-
Moakes J. Ms.	Con	575	-
Mitchell E. Ms.	LD	422	-
Swift M.	Lab	376	15.3
	Turnout	45.1	8.4

Cheveley (3226)²

		vote	share
Kerby T.	Con	856	60.9
Willows S. Ms.	Con	740	-
Humphries R.	LD	347	24.7
Liddle J. Ms.	LD	256	-
Murphy K. Ms.	Lab	202	14.4
	Turnout	44.6	36.2

Downham Villages (3444)²

		vote	share
Bailey A. Ms.*	Con	811	47.6
Goodge T.*	Con	689	-
Winters O.	Ind	409	24.0
Pavey S.	Lab	291	17.1
Burnett J. Ms.	LD	192	11.3
Griffiths G. Ms.	LD	181	-
	Turnout	46.8	23.6

Dullingham Villages (1609)

		vote	share
Morris C.	Con	282	36.7
Owen T.	Ind	251	32.6
Hay R.	Lab	142	18.5
Bailey J. Ms.	LD	94	12.2
	Turnout	48.3	4.0

Ely East (3041)²

		vote	share
Hobbs R.	Con	613	42.0
Burton W.	Con	598	-
Bell N.	LD	541	37.1
Warman D. Ms.	LD	522	-
Barber R. Ms.	Lab	306	21.0
Frances J. Ms.	Lab	258	-
	Turnout	50.6	4.9

Ely North (5081)³

		vote	share
Rouse M.*	Con	798	37.2
Harris L. Ms.	LD	796	37.1
Griffin-Singh E. Ms.	Con	795	-
Hargreaves R.	LD	740	-
Bradney M.	Con	658	-
Moss-Eccardt R.	LD	643	-
Butler C. Ms.	Lab	550	25.7
Creswick J.	Lab	545	-
Jeffries C.	Lab	514	-
	Turnout	43.7	0.1

Ely South (3123)²

		vote	share
Hunt T.	Con	633	39.9
Friend-Smith J.*	LD	567	35.7
Pickess B.	Con	546	-
Owen D.	LD	487	-
Biamonti B. Ms.	Lab	210	13.2
Killeya M.	Lab	192	-
Allen A.	Green	178	11.2
	Turnout	49.7	4.2

Ely West (3473)²

		vote	share
Friend-Smith S. Ms.*	LD	949	52.2
Austen S. Ms.*	LD	873	-
Haynes M.	Con	614	33.8
Wood R.	Con	498	-
Fraser S. Ms.	Lab	256	14.1
England P.	Lab	232	-
	Turnout	47.5	18.4

Fordham Villages (2843)²

		vote	share
Allan M.*	Con	664	60.2
Schumann J.	Con	535	-
Richmond C.	LD	439	39.8
Griffiths D.	LD	327	-
	Turnout	39.7	20.4

Haddenham (4614)³

		vote	share
Wilson G.*	LD	930	45.2
Allen I.*	LD	887	-
Wilson P. Ms.*	LD	864	-
Woodbine B.	Con	759	36.9
Bradney K. Ms.	Con	718	-
Hitchin N.	Con	685	-
Horne C.	Lab	369	17.9
	Turnout	46.7	8.3

Isleham (1782)

		vote	share
Beckett D.*	Ind	601	82.8
Bloomfield P.	Lab	125	17.2
	Turnout	41.8	65.6

Littleport East (3879)²

		vote	share
Wright A.*	Ind	655	40.3
Ambrose Smith D.	Con	577	35.5
Brown F.*	Con	559	-
Palmer R. Ms.	LD	395	24.3
	Turnout	34.7	4.8

Littleport West (2393)²

		vote	share
Morrison N.*	LD	317	41.0
Ambrose Smith C. Ms.	Con	305	39.4
Fentiman S. Ms.	LD	225	-
Campbell V.	Con	221	-
Cox P.	Ind	152	19.6
	Turnout	30.8	1.6

Soham North (4118)²

		vote	share
Palmer J.*	Con	719	62.4
Cornell T.*	Con	613	-
Masters J.	LD	252	21.9
Warner C.	LD	247	-
Revel S. Ms.	Lab	182	15.8
	Turnout	27.7	40.5

Soham South (4930)³

		vote	share
Parramint A.*	Con	745	35.9
Fordham C.	Ind	598	28.8
Palmer J.	Ind	590	-
Humphreys J.*	Con	578	-
Allan M. Ms.	Con	547	-
Masters N. Ms.	LD	397	19.1
Swift L. Ms.	Lab	335	16.1
Phillips L. Ms.	LD	300	-
	Turnout	34.2	7.1

Stretham (3049)²

		vote	share
Hunt B.*	Con	917	65.5
Roberts C.	Con	781	-
Crighton J. Ms.	LD	274	19.6
Mittins A.	LD	211	-
Glasspool R.	Lab	210	15.0
	Turnout	46.8	45.9

Sutton (3050)²

		vote	share
Read P.*	Con	593	46.4
Moakes P.*	Con	554	-
Owen D.	Lab	379	29.7
Spenceley L. Ms.	LD	305	23.9
Maybury A. Ms.	LD	165	-
	Turnout	39.2	16.8

The Swaffhams (1564)

		vote	share
Alderson A.*	Con	460	56.7
Cane C. Ms.	LD	352	43.3
	Turnout	52.5	13.3

