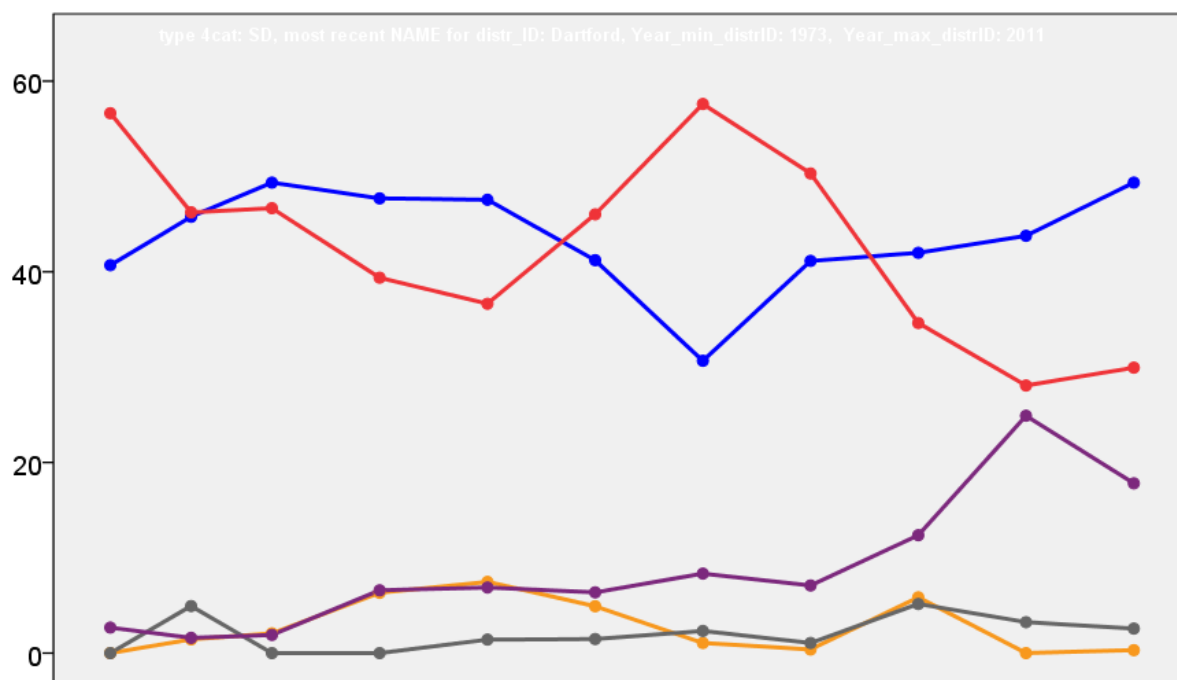


Dartford Borough Council Election Results 1973-2011



Colin Rallings and Michael Thrasher
The Elections Centre
Plymouth University

The information contained in this report has been obtained from a number of sources. Election results from the immediate post-reorganisation period were painstakingly collected by Alan Willis largely, although not exclusively, from local newspaper reports. From the mid-1980s onwards the results have been obtained from each local authority by the Elections Centre. The data are stored in a database designed by Lawrence Ware and maintained by Brian Cheal and others at Plymouth University. Despite our best efforts some information remains elusive whilst we accept that some errors are likely to remain. Notice of any mistakes should be sent to elections@plymouth.ac.uk. The results sequence can be kept up to date by purchasing copies of the annual Local Elections Handbook, details of which can be obtained by contacting the email address above.

Front cover: the graph shows the distribution of percentage vote shares over the period covered by the results. The lines reflect the colours traditionally used by the three main parties. The grey line is the share obtained by Independent candidates while the purple line groups together the vote shares for all other parties.

Rear cover: the top graph shows the percentage share of council seats for the main parties as well as those won by Independents and other parties. The lines take account of any by-election changes (but not those resulting from elected councillors switching party allegiance) as well as the transfers of seats during the main round of local election.

The lower graph shows for each main round of local elections the overall percentage turnout (solid line), the percentage of women candidates standing at (dotted line) and the percentage of women among those elected (hashed line).

Dartford - 1973

Galley Hill (2281)²

		vote	share
Povey R.	Lab	708	87.5
Bacon S.	Lab	694	-
Smith L.	Con	101	12.5
Lister W.	Con	100	-

Turnout 35.5 75.0

No. 1 (Dartford: Brent) (5759)⁴

		vote	share
Scott T.	Lab	993	47.4
Ripley A.	Con	993	47.4
Rafult S.	Lab	958	-
Holloway N.	Con	943	-
Draper R.	Con	940	-
Stone J.	Lab	926	-
Tomlinson J.	Lab	913	-
Farrier J.	Con	911	-
Protheroe R.	Comm	110	5.2

Turnout 36.4 0.0

No. 10 (Darenth: South) (1675)

		vote	share
Moss G.	Lab	385	67.1
Gutteridge I. Ms.	Con	189	32.9

Turnout 34.3 34.1

No. 12 (Stone) (3596)³

		vote	share
Sweetland D.	Lab	734	78.6
Pretty E.	Lab	692	-
White T.	Lab	678	-
Salway A.	Con	200	21.4
Draper P.	Con	182	-
Detten W.	Con	167	-

Turnout 26.0 57.2

No. 13 (Bean & Horns Cross) (2327)²

		vote	share
Jones L.	Lab	707	90.5
O'Nions D.	Lab	644	-
Tisdell K.	Con	74	9.5
Wates B.	Con	69	-

Turnout 33.6 81.0

No. 14 (Sutton-At-Hone: North) (1023)

		vote	share
Clift A.	Con	300	54.4
Partridge F.	Lab	251	45.6

Turnout 53.9 8.9

No. 15 (Sutton-At-Hone: South) (1760)

		vote	share
Nimmo G.	Lab	411	51.0
Nothard M.	Con	395	49.0

Turnout 45.8 2.0

No. 2 (Dartford: Heath) (8022)⁶

		vote	share
Maxsted R.	Con	1,408	55.9
McGuinness R.	Con	1,389	-
Mucci I.	Con	1,380	-
Smith A.	Con	1,363	-
Wood K.	Con	1,339	-
Saker M.	Con	1,338	-
Keens A.	Lab	1,111	44.1
Lavery P.	Lab	1,105	-
Pittis D.	Lab	1,060	-
Stone R.	Lab	1,035	-
Rutherford A.	Lab	1,027	-
Rutherford N.	Lab	1,020	-

Turnout 31.4 11.8

No. 3 (Dartford: Highfield) (4476)³

		vote	share
May A.	Lab	986	56.9
Warren A.	Lab	893	-
Connelly P.	Lab	866	-
Bonner D.	Con	747	43.1
Smith R.	Con	729	-
Sanders V.	Con	706	-

Turnout 38.7 13.8

No. 4 (Dartford: Priory) (9065)⁷

		vote	share
Brown S.	Lab	1,719	65.7
Irving S.	Lab	1,656	-
May E.	Lab	1,635	-
Copper E.	Lab	1,579	-
Conyard L.	Lab	1,575	-
Muckle J.	Lab	1,567	-
Wise D.	Lab	1,528	-
Mucci R.	Con	676	25.8
Knott G.	Con	635	-
Nightingale G.	Con	616	-
Normani E.	Con	610	-
Yates A.	Con	586	-
Rammers G.	Con	567	-
Boughton R.	Con	562	-
Dunmall R.	Comm	221	8.4

Turnout 28.9 39.9

No. 5 (Dartford: St. Albans Andtown) (4062)³

		vote	share
Clark J.	Lab	694	45.9
Baker B.	Lab	693	-
Mayne L.	Lab	651	-
Holt R.	Con	569	37.6
Pearsall K.	Con	496	-
Sanders M.	Con	461	-
Aldous R.	NF	215	14.2
Harrington D.	NF	173	-
Follett K.	NF	163	-
Holland W.	Comm	35	2.3

Turnout 37.2 8.3

No. 7 (Swanscombe: Greenhithe) (1989)²

		vote	share
Melvin P.	Lab	721	67.4
Bradley M.	Lab	551	-
Mitchell J.	Con	349	32.6
Coker E.	Con	267	-

Turnout 53.8 34.8

No. 9 (Darenth: North) (1142)

		vote	share
Green D.	Lab	197	56.8
Gutteridge R.	Con	150	43.2

Turnout 30.4 13.5

Southfleet (2002)²

		vote	share
Costin E.	Con	610	74.1
Newman D.	Con	606	-
Eastdown A.	Lab	213	25.9
Osborne J.	Lab	180	-

Turnout 41.1 48.2

Swanscombe (2396)²

		vote	share
Butcher C.	Lab	760	76.4
Fuller K.	Lab	734	-
Letchford B.	Con	235	23.6
Adams P.	Con	187	-

Turnout 41.5 52.8

Wilmington Central (1607)

		vote	share
Short N.	Lab	475	57.2
Wendes R.	Con	356	42.8

Turnout 51.7 14.3

Wilmington East (1366)

		vote	share
Jolly D.	Con	331	62.2
Shutler S.	Lab	201	37.8

Turnout 38.9 24.4

Wilmington West (2524)²

		vote	share
Gillham T.	Con	623	67.8
Nightingale B.	Con	613	-
Dutfield A.	Lab	296	32.2
Stone P.	Lab	287	-

Turnout 36.4 35.6

Dartford - 1976

Bean (1101)

		vote	share
O'Nions D.	Lab	328	54.3
Sargent D. Ms.	Con	245	40.6
Shatz H.	Ind	31	5.1

Turnout 54.9 13.7

Brent (3993)³

		vote	share
Holloway N.	Con	758	38.8
Buckingham L.	Con	708	-
Parsons D.	Con	705	-
Eaton L.	Lab	688	35.2
Machin N.	Lab	647	-
Stone R.	Lab	600	-
Ripley A.	Ind	508	26.0
Callahan D.	Ind	421	-
Firman F.	Ind	367	-

Turnout 49.4 3.6

Darenth (3048)²

		vote	share
Moss G.	Lab	594	50.2
Nimmo G.	Lab	521	-
White J.	Con	501	42.3
Austen P.	Con	446	-
Minnican G.	Ind	88	7.4
Halford B. Ms.	Ind	87	-

Turnout 39.9 7.9

Galley Hill (2379)²

		vote	share
Fuller K.	Lab	596	64.9
Bacon S.	Lab	554	-
Newman J.	Con	216	23.5
Robson D.	NP	107	11.6

Turnout 36.8 41.3

Greenhithe (1963)²

		vote	share
Melvin P.	Lab	717	70.7
Bradley M. Ms.	Lab	612	-
Goldson P. Ms.	Con	297	29.3
Adams P.	Con	272	-

Turnout 51.3 41.4

Gundulf (3594)³

		vote	share
Keightley C.	Con	797	49.4
Pearsall K.	Con	764	-
Thurlow K.	Con	763	-
Grover E. Ms.	Lab	565	35.0
Phillips H.	Lab	530	-
Melford J. Ms.	Lab	527	-
Tyrrell C.	Lib	250	15.5
Dawkings T.	Lib	236	-

Turnout 44.9 14.4

Heath (4125)³

		vote	share
Smith A.	Con	1,286	64.8
Mucci I. Ms.	Con	1,255	-
Maxted R.	Con	1,254	-
Keens A.	Lab	699	35.2
Dowman S. Ms.	Lab	653	-
Osborne J.	Lab	653	-

Turnout 49.8 29.6

Horns Cross (1316)			
		vote	share
Jones I.	Lab	429	65.8
Ripley B. Ms.	Ind	100	15.3
Mucci R.	Con	96	14.7
Aldous F.	NP	27	4.1
Turnout		50.5	50.5

Joyce Green (2721)²			
		vote	share
Brown S. Ms.	Lab	676	71.0
Cooper E.	Lab	632	-
Nightingale G. Ms.	Con	229	24.1
Holland W.	Comm	47	4.9
Turnout		35.4	47.0

Littlebrook (2795)²			
		vote	share
Irving S.	Lab	704	70.6
Muckle J.	Lab	605	-
Mucci N.	Con	260	26.1
Wright B.	Comm	33	3.3
Turnout		34.1	44.5

Maypole (2751)²			
		vote	share
Prior E.	Con	774	71.5
Storey E.	Con	737	-
Stone J. Ms.	Lab	308	28.5
Ribton L. Ms.	Lab	294	-
Turnout		40.4	43.1

Miskin (2247)²			
		vote	share
Wood K.	Con	560	63.1
Saker M. Ms.	Con	525	-
Defty P.	Lab	327	36.9
Hammond G.	Lab	324	-
Turnout		41.1	26.3

Newtown (3930)³			
		vote	share
Clark J.	Lab	849	46.9
Mayne L.	Lab	790	-
Scott T.	Lab	761	-
Knott R.	Con	638	35.2
Knott G. Ms.	Con	582	-
Dack D.	Con	567	-
Lay B. Ms.	Ind	168	9.3
Collins D.	Ind	159	-
Regan J.	Ind	157	-
Aldous R.	NP	72	4.0
Follett K.	NF	65	3.6
Nobbs I. Ms.	NF	56	-
Price G.	NF	48	-
Dyson G.	NP	44	-
Read J.	NP	36	-
Protheroe R. Ms.	Comm	19	1.0
Turnout		47.3	11.7

Princes (3573)³			
		vote	share
May A.	Lab	940	63.3
May E. Ms.	Lab	835	-
Brewer M.	Lab	830	-
Bonner D.	Con	544	36.7
Storey R. Ms.	Con	471	-
Vick M.	Con	463	-
Turnout		44.2	26.7

Priory (1365)			
		vote	share
Conyard L. Ms.	Lab	344	49.6
Smith T.	Con	313	45.2
Merchant G.	NP	36	5.2
Turnout		50.9	4.5

Southfleet (2080)²			
		vote	share
Costin E.	Con	864	79.7
Newman D.	Con	863	-
Easdown A.	Lab	220	20.3
Wells B.	Lab	179	-
Turnout		54.9	59.4

Stone (3664)³			
		vote	share
Sweetland D.	Lab	768	60.9
Petty E.	Lab	724	-
White T.	Lab	663	-
Salway A.	Con	406	32.2
Draper R.	Con	401	-
Borda J.	Con	354	-
Aldous V.	NP	87	6.9
Reynolds A. Ms.	NP	70	-
Merchant R.	NP	68	-
Turnout		36.5	28.7

Sutton At Hone & Hawley (2894)²			
		vote	share
Nothard M.	Con	932	64.8
Coleman P.	Con	920	-
Clark G.	Lab	507	35.2
Russell J.	Lab	501	-
Turnout		53.7	29.5

Swanscombe (2368)²			
		vote	share
Butcher C.	Lab	673	71.1
Povey R. Ms.	Lab	663	-
Johncock D.	Con	273	28.9
Turnout		41.6	42.3

Wilmington Central (1627)			
		vote	share
Short N.	Lab	447	45.2
Hayward R. Ms.	Con	424	42.8
Cornish A. Ms.	Lib	119	12.0
Turnout		61.4	2.3

Wilmington East (1342)			
		vote	share
Jolley D.	Con	463	69.2
Phillips A.	Lab	206	30.8
Turnout		50.5	38.4

Wilmington West (2552)²			
		vote	share
Gillham A.	Con	831	57.6
Nightingale R.	Con	814	-
Rooks J.	Ind	369	25.6
French D.	Ind	313	-
Dutfield A.	Lab	242	16.8
Hunting D.	Lab	237	-
Turnout		58.8	32.0

Dartford - 1979

Bean (1189)			
		vote	share
Whitlock R.	Con	476	52.2
Wells B.	Lab	436	47.8
Turnout		77.7	4.4

Brent (4120)³			
		vote	share
Buckingham L.	Con	1,730	54.7
Holloway N.	Con	1,659	-
Parsons D.	Con	1,605	-
Eaton L.	Lab	1,432	45.3
Blake J. Ms.	Lab	1,422	-
Refault S.	Lab	1,317	-
Turnout		83.1	9.4

Darenth (3220)²			
		vote	share
Moss G.	Lab	1,115	52.2
Nimmo G.	Lab	1,028	-
Dack D.	Con	1,021	47.8
Robinson N.	Con	873	-
Turnout		69.7	4.4

Galley Hill (2294)²			
		vote	share
Bacon S.	Lab	1,077	64.8
Brown C.	Lab	990	-
Bonner D.	Con	586	35.2
Lewis Legg J.	Con	549	-
Turnout		76.2	29.5

Greenhithe (1990)²			
		vote	share
Melvin P.	Lab	1,046	66.0
Bradley M. Ms.	Lab	839	-
Johncock D.	Con	538	34.0
Adams P.	Con	527	-
Turnout		81.7	32.1

Gundulf (3472)³			
		vote	share
Keightley C.	Con	1,381	49.5
Pearsall K.	Con	1,301	-
Thurlow K.	Con	1,289	-
Baxter S.	Lab	1,018	36.5
Muckle A. Ms.	Lab	946	-
Melford J. Ms.	Lab	945	-
Roberts D.	Lib	390	14.0
Turnout		79.3	13.0

Heath (4125)³			
		vote	share
Maxed R.	Con	2,212	68.8
Smith A.	Con	2,186	-
Mucci I. Ms.	Con	2,143	-
Brown S.	Lab	1,005	31.2
Dowman S. Ms.	Lab	966	-
Harris R.	Lab	966	-
Turnout		84.4	37.5

Horns Cross (1300)			
		vote	share
Jones I.	Lab	724	70.0
Ramsden V.	Con	310	30.0
Turnout		81.3	40.0

Joyce Green (2659)²			
		vote	share
Brown S. Ms.	Lab	1,251	68.8
Cooper E.	Lab	1,180	-
Mortimer P.	Con	507	27.9
Woolley D. Ms.	Con	450	-
Holland W.	Comm	60	3.3
Turnout		72.3	40.9

Littlebrook (2765)²			
		vote	share
Irving S.	Lab	1,476	73.4
Muckle J.	Lab	1,326	-
Vick M.	Con	535	26.6
Willmott R.	Con	522	-
Turnout		78.7	46.8

Maypole (2801)²			
		vote	share
Prior E.	Con	1,449	67.1
Storey E.	Con	1,352	-
Gallacher W.	Lab	709	32.9
Whitaker G.	Lab	675	-
Turnout		81.4	34.3

Miskin (2211)²			
		vote	share
Smith T.	Con	851	44.2
Saker M. Ms.	Con	790	-
Norman K.	Lab	536	27.9
Phillips J.	Lab	505	-
Ripley A.	Ind Con	353	18.3
Morris B.	Ecol	184	9.6
Turnout		81.4	16.4

Newtown (3906) ³			
		vote	share
Clark J.	Lab	1,425	53.2
Mayne L.	Lab	1,412	-
Stone R.	Lab	1,322	-
Bowles P.	Con	1,256	46.8
Willmott H. Ms.	Con	1,208	-
Mucci R.	Con	1,208	-
Turnout		77.3	6.3
Princes (4134) ³			
		vote	share
May A.	Lab	1,788	60.0
May E. Ms.	Lab	1,691	-
Brewer M.	Lab	1,617	-
Stanford P.	Con	1,193	40.0
Smith W. Ms.	Con	1,056	-
Storey R. Ms.	Con	991	-
Turnout		78.2	20.0
Priory (1304)			
		vote	share
Barratt C.	Lab	502	48.5
Yates A.	Con	403	38.9
Price A.	Lib	131	12.6
Turnout		81.8	9.6
Southfleet (2228) ²			
		vote	share
Huxley E.	Con	1,255	64.3
James E. Ms.	Con	1,111	-
Oswald T.	Lib	398	20.4
Jones D. Ms.	Lab	299	15.3
Shirley R.	Lab	242	-
Turnout		84.4	43.9
Stone (3638) ³			
		vote	share
Sweetland D.	Lab	1,444	53.9
Petty E.	Lab	1,434	-
Phillips H.	Lab	1,337	-
Salway A.	Con	981	36.6
Draper R.	Con	946	-
Wightman N. Ms.	Con	943	-
Read J.	BUP	252	9.4
Furlong J.	BUP	186	-
Turnout		78.6	17.3
Sutton At Hone & Hawley (2981) ²			
		vote	share
Coleman P.	Con	1,782	75.2
Nothard M.	Con	1,769	-
O'Donoghue J. Ms.	Lab	587	24.8
Skinner G.	Lab	542	-
Turnout		83.8	50.4
Swanscombe (2360) ²			
		vote	share
Povey R. Ms.	Lab	1,276	71.8
Hagger D.	Lab	1,202	-
Edney P.	Con	502	28.2
Mucci N.	Con	495	-
Turnout		79.8	43.5
Wilmington Central (1632)			
		vote	share
Sutton J.	Con	758	55.9
Farrell D.	Lab	598	44.1
Turnout		85.3	11.8
Wilmington East (1324)			
		vote	share
Jolley D.	Con	680	62.3
Dray D.	Lab	412	37.7
Turnout		84.1	24.5
Wilmington West (2596) ²			
		vote	share
Gillham A.	Con	1,550	71.9
Nightingale R.	Con	1,496	-
Dutfield A.	Lab	605	28.1
Stallard R.	Lab	551	-
Turnout		86.3	43.9

Dartford - 1983

Bean (1304)			
		vote	share
Francis G.	Con	478	60.1
Halford B. Ms.	Lab	271	34.1
Price D.	Lib/SDP	46	5.8
Turnout		65.3	26.0
Brent (4124) ³			
		vote	share
Buckingham L.	Con	1,183	51.2
Holloway N.	Con	1,117	-
Parsons D.	Con	1,100	-
Masson J.	Lab	847	36.7
Blake J. Ms.	Lab	822	-
Craig M.	Lab	786	-
Holden D.	Lib/SDP	280	12.1
Turnout		54.0	14.5
Darenth (2946) ²			
		vote	share
Cook T.	Lab	779	54.1
Manzi G.	Lab	673	-
Dack D.	Con	661	45.9
Jackson J. Ms.	Con	654	-
Turnout		48.0	8.2
Galley Hill (2316) ²			
		vote	share
Crosby M.	Ind Lab	399	34.4
Boggis K.	Res	319	27.5
Harvey J.	Res	311	-
Baker G.	Lab	305	26.3
Bacon S.	Ind Lab	286	-
Halford N.	Lab	276	-
Willmott R.	Con	97	8.4
Read S.	New Brit	41	3.5
Turnout		51.0	6.9
Greenhithe (2181) ²			
		vote	share
Melvin P.	Lab	803	78.1
Lawrie M. Ms.	Lab	690	-
Draper R.	Con	225	21.9
Cheetham J. Ms.	Con	222	-
Turnout		50.0	56.2
Gundulf (3300) ³			
		vote	share
Pearsall K.	Con	1,042	53.1
Thurlow K.	Con	1,040	-
Walmsley K.	Con	1,040	-
O'Brien D. Ms.	Lab	508	25.9
Sharp A.	Lab	487	-
Mahon J.	Lab	478	-
Seale J. Ms.	Lib/SDP	238	12.1
Morris B.	Ecol	173	8.8
Turnout		55.0	27.2
Heath (4195) ³			
		vote	share
Stanford P.	Con	1,531	62.5
Maxted R.	Con	1,491	-
Mucci I. Ms.	Con	1,430	-
Keens A.	Lab	587	24.0
Wimhurst S. Ms.	Lab	498	-
Sadler P.	Lab	495	-
Oehmig D.	Lib/SDP	332	13.6
Turnout		57.0	38.5
Horns Cross (1291)			
		vote	share
Jones I.	Lab	463	67.3
Youseman A.	Con	225	32.7
Turnout		54.0	34.6

Joyce Green (2565) ²			
		vote	share
Muckle A. Ms.	Lab	771	75.4
Eaton L.	Lab	735	-
Payne S.	Con	251	24.6
Pedlingham A. Ms.	Con	236	-
Turnout		41.0	50.9
Littlebrook (2981) ²			
		vote	share
Irving S.	Lab	833	68.3
Muckle J.	Lab	830	-
Bott D.	Con	255	20.9
Shippam J. Ms.	Con	234	-
Fitzpatrick M.	Lib/SDP	131	10.7
Turnout		47.0	47.4
Maypole (2956) ²			
		vote	share
Robinson N.	Con	847	59.6
Leadbeater K.	Con	839	-
Jones R.	Lib/SDP	327	23.0
Downer R.	Lab	247	17.4
Masson M. Ms.	Lab	219	-
Turnout		50.0	36.6
Miskin (2182) ²			
		vote	share
Lewis Legg J.	Con	712	64.0
Smith T.	Con	704	-
Gibbins J.	Lab	287	25.8
Hildick A.	Lab	278	-
Paine P. Ms.	Lib/SDP	113	10.2
Phillips P.	Lib/SDP	98	-
Turnout		52.0	38.2
Newtown (2113) ³			
		vote	share
Tibby M.	Con	1,133	51.4
Cunningham I. Ms.	Con	1,031	-
Williams B.	Con	1,015	-
Belton M.	Lab	871	39.5
Refault S. Ms.	Lab	845	-
Stone R.	Lab	835	-
White J. Ms.	Lib/SDP	201	9.1
Turnout		55.0	11.9
Princes (4140) ³			
		vote	share
May A.	Lab	1,284	69.6
May E. Ms.	Lab	1,177	-
Brewer M.	Lab	1,172	-
Draper P.	Con	560	30.4
Storey R. Ms.	Con	539	-
Huffer C.	Con	508	-
Turnout		48.0	39.3
Priory (1250)			
		vote	share
Smith B.	Con	376	51.8
Mattocks S. Ms.	Lab	350	48.2
Turnout		57.0	3.6
Southfleet (2287) ²			
		vote	share
Huxley E.	Con	1,023	82.4
James E. Ms.	Con	997	-
Easdown A.	Lab	219	17.6
Jones D. Ms.	Lab	211	-
Turnout		54.3	64.7
Stone (3744) ³			
		vote	share
Sweetland D.	Lab	784	48.4
Phillips H.	Lab	751	-
Bridger C.	Lab	751	-
Bell H.	Con	529	32.7
Jarvis J.	Con	516	-
Khoough P.	Con	477	-
Read J.	NB	307	19.0
Worrell M. Ms.	NB	184	-
Turnout		43.9	15.7

Sutton At Hone & Hawley (3270)²			
		vote	share
Coleman P.	Con	1,315	77.8
Nothard M.	Con	1,299	-
Faithfull F.	Lab	376	22.2
White T.	Lab	373	-
Turnout		58.0	55.5

Swanscombe (2330)²			
		vote	share
Read B.	Res	770	57.3
Rowlands J.	Res	610	-
Povey R. Ms.	Lab	478	35.6
Hagger D.	Lab	400	-
Wightman N. Ms.	Con	96	7.1
Barsby D. Ms.	Con	92	-
Turnout		57.2	21.7

Wilmington Central (1822)			
		vote	share
Jessop R.	Con	458	44.6
Easdown B.	Lab	371	36.2
Hayward R. Ms.	Res	197	19.2
Turnout		58.4	8.5

Wilmington East (1317)			
		vote	share
Storey E.	Con	383	52.3
Dray D.	Lab	207	28.3
Cheyne D.	Res	142	19.4
Turnout		58.1	24.0

Wilmington West (2664)²			
		vote	share
Gillham A.	Con	1,015	67.7
McClenahan L.	Con	969	-
Pittman T.	Lib/SDP	242	16.1
James P.	Lab	242	16.1
Pound E.	Lib/SDP	229	-
Thomas R.	Lab	227	-
Turnout		57.6	51.6

Dartford - 1987

Bean (1278)			
		vote	share
Francis G.	Con	496	60.5
Martin B. Ms.	Lab	324	39.5
Turnout		64.5	21.0

Brent (4063)³			
		vote	share
Bell H.	Con	1,261	60.3
Burchell S.	Con	1,223	-
Everitt A.	Con	1,192	-
Bryant R. Ms.	Lab	829	39.7
Dando M.	Lab	814	-
Eaton M. Ms.	Lab	791	-
Turnout		53.5	20.7

Darenth (2912)²			
		vote	share
Cook T.	Lab	761	50.3
Bliss A.	Con	752	49.7
Reeves C.	Lab	693	-
Robinson N.	Con	660	-
Turnout		51.9	0.6

Galley Hill (2289)²			
		vote	share
Crosby M.	Lab	722	65.5
Barham A.	Lab	622	-
Boggis K.	Res	381	34.5
Vick M.	Res	306	-
Turnout		47.3	30.9

Greenhithe (2146)²			
		vote	share
Melvin P.	Lab	565	55.8
Lawrie M. Ms.	Lab	400	-
East S. Ms.	Res	284	28.1
Poppy B.	Res	236	-
Parkinson S. Ms.	Con	163	16.1
Burton S. Ms.	Con	158	-
Turnout		44.8	27.8

Gundulf (3273)³			
		vote	share
Pearsall K.	Con	1,079	58.3
Walmsley K.	Con	1,041	-
Thurlow K.	Con	1,036	-
Farrell S. Ms.	Lab	478	25.8
Palmer R.	Lab	470	-
Prout G.	Lab	454	-
Wagstaff K.	Lib/SDP	293	15.8
Tomlinson E. Ms.	Lib/SDP	291	-
Seale J. Ms.	Lib/SDP	286	-
Turnout		57.4	32.5

Heath (4117)³			
		vote	share
Leadbeater K.	Con	1,507	61.1
Maxted R.	Con	1,459	-
Mucci I. Ms.	Con	1,439	-
Langridge P.	Lab	568	23.0
Stock M. Ms.	Lab	558	-
Stoate D. Ms.	Lab	536	-
Oehmig D.	Lib/SDP	392	15.9
Turnout		56.6	38.1

Horns Cross (1273)			
		vote	share
Jones I.	Lab	440	72.8
Khoeugh P.	Con	164	27.2
Turnout		47.7	45.7

Joyce Green (2543)²			
		vote	share
Muckle A. Ms.	Lab	667	71.8
Eaton L.	Lab	622	-
Bott D.	Con	262	28.2
Shippam J. Ms.	Con	228	-
Turnout		39.2	43.6

Littlebrook (2952)²			
		vote	share
Irving S.	Lab	818	55.8
Muckle J.	Lab	763	-
Pedlingham A. Ms.	Con	418	28.5
Patel D.	Con	403	-
Baseden C.	Lib/SDP	230	15.7
Turnout		49.2	27.3

Longfield (3963)³			
		vote	share
Bassam A.	Con	1,465	61.3
Burnan G.	Con	1,360	-
Huxley E.	Con	1,183	-
Brown J.	Res	639	26.7
Jennings S.	Lab	286	12.0
Craig M.	Lab	213	-
Francis R.	Lab	206	-
Turnout		48.4	34.6

Maypole (2900)²			
		vote	share
Austin J. Ms.	Con	918	60.9
Odd H.	Con	901	-
Jones R.	Lib/SDP	407	27.0
Humphreys H. Ms.	Lib/SDP	400	-
Walsh H.	Lab	183	12.1
Dear F. Ms.	Lab	181	-
Turnout		53.3	33.9

Miskin (2155)²			
		vote	share
Smith A.	Con	736	-
Smith T.	Con	736	66.5
Barry J.	Lab	370	33.5
Stephenson M.	Lab	352	-
Turnout		52.7	33.1

Newtown (3735)³			
		vote	share
Waters B. Ms.	Con	886	37.9
Stockley A. Ms.	Con	872	-
Williams B.	Con	871	-
Baker D.	Lab	765	32.7
Colling M. Ms.	Lab	745	-
Withero M.	Lab	644	-
Tibby M.	Ind	458	19.6
Seale J.	Lib/SDP	231	9.9
Turnout		54.2	5.2

Princes (4082)³			
		vote	share
May A.	Lab	1,280	71.0
May E. Ms.	Lab	1,161	-
Refault S.	Lab	1,047	-
Huffer C.	Con	522	29.0
Payne S.	Con	511	-
Storey R. Ms.	Con	498	-
Turnout		47.2	42.1

Priory (1238)			
		vote	share
Smith B.	Con	486	64.0
Smith D. Ms.	Lab	273	36.0
Turnout		61.6	28.1

Southfleet (1041)			
		vote	share
Salway M. Ms.	Con	457	80.9
North S.	Lab	108	19.1
Turnout		55.1	61.8

Stone (3706)³			
		vote	share
Sweetland D.	Lab	734	43.5
Phillips D.	Lab	697	-
Hardon D. Ms.	Lab	616	-
Bell B. Ms.	Con	553	32.8
Jarvis J.	Con	531	-
Wightman N. Ms.	Con	504	-
Read J.	New Brit Ind	234	13.9
Dunn D.	New Brit Ind	211	-
Jefferson P.	Lib/SDP	166	9.8
Worrell D.	New Brit Ind	140	-
Turnout		43.4	10.7

Sutton At Hone & Hawley (3239)²			
		vote	share
Coleman P.	Con	1,213	66.5
Nothard M.	Con	1,160	-
Bryant J.	Lab	328	18.0
Griffiths D.	Lab	294	-
Puddefoot G.	Lib/SDP	283	15.5
Turnout		54.2	48.5

Swanscombe (2296)²			
		vote	share
Read B.	Res	692	59.0
Crow P.	Res	618	-
Barham A. Ms.	Lab	481	41.0
Defty P.	Lab	476	-
Turnout		52.3	18.0

Wilmington Central (1801)			
		vote	share
Jessop R.	Con	626	55.7
Kemp B. Ms.	Lab	497	44.3
Turnout		63.1	11.5

Wilmington East (1306)			
		vote	share
Hubert J.	Con	396	54.6
James P.	Lab	194	26.8
Maidment D.	Lib/SDP	135	18.6
Turnout		55.7	27.9

Wilmington West (2624) ²			
		vote	share
Allen A. Ms.	Con	1,041	68.4
Gillham A.	Con	998	-
Pittman T.	Lib/SDP	285	18.7
Holden D.	Lib/SDP	236	-
Laker C.	Lab	197	12.9
Power J.	Lab	185	-
Turnout		58.5	49.6

Dartford - 1991

Bean (1222)			
		vote	share
Francis G.*	Con	312	42.6
Burningham R.	Lab	282	38.5
Walters A. Ms.	LD	139	19.0
Turnout		60.1	4.1

Brent (3869) ³			
		vote	share
Dando M.	Lab	936	42.3
Masson J.	Lab	819	-
Austin J. Ms.	Con	807	36.5
Bell H.*	Con	794	-
Eaton M. Ms.	Lab	779	-
Muller C.	Con	724	-
Tibby M.	LD	468	21.2
Baseden C.	LD	462	-
Turnout		56.7	5.8

Darenth (2735) ²			
		vote	share
Cook T.*	Lab	818	51.8
Carey D.	Lab	784	-
Smith E. Ms.	Con	510	32.3
Kite J.	Con	488	-
Walters M.	LD	250	15.8
Turnout		56.3	19.5

Galley Hill (2283) ²			
		vote	share
Crosby M.*	Lab	653	66.4
Barham A.*	Lab	560	-
Read I. Ms.	Res	331	33.6
Crow G. Ms.	Res	306	-
Turnout		43.8	32.7

Greenhithe (2425) ²			
		vote	share
Ash-Smith D. Ms.	Lab	487	47.4
Lawrie M. Ms.*	Lab	457	-
East S. Ms.	Res	330	32.1
Burchell A.	Res	298	-
Wrightman N. Ms.	Con	164	16.0
Gompers P. Ms.	Con	155	-
Martin P.	Green	46	4.5
Turnout		42.0	15.3

Gundulf (3156) ³			
		vote	share
Armstrong E.	Con	780	54.5
Thurlow K.*	Con	775	-
Walmsley K.*	Con	724	-
Nicholls K.	Lab	650	45.5
Jones D. Ms.	Lab	646	-
Melford J. Ms.	Lab	642	-
Turnout		47.4	9.1

Heath (4039) ³			
		vote	share
Carpenter M. Ms.	Con	1,125	51.4
Leadbeater K.*	Con	1,082	-
Maxted R.*	Con	1,052	-
Stoate D. Ms.	Lab	791	36.2
Turner R.	Lab	754	-
Stock V.	Lab	749	-
Youngs G.	Green	272	12.4
Turnout		52.9	15.3

Horns Cross (1133)			
		vote	share
Jones I.*	Lab	386	81.8
Bell B. Ms.	Con	86	18.2
Turnout		41.7	63.6

Joyce Green (2521) ²			
		vote	share
Muckle A. Ms.*	Lab	773	80.4
Eaton L.*	Lab	702	-
Kirby J.	Con	189	19.6
Kirby S. Ms.	Con	172	-
Turnout		40.9	60.7

Littlebrook (3060) ²			
		vote	share
Stoate H.	Lab	840	71.8
Muckle J.*	Lab	838	-
Golding A.	Con	330	28.2
Willmott R.	Con	279	-
Turnout		42.2	43.6

Longfield (3869) ³			
		vote	share
Bassam A.*	Con	1,330	72.7
Burnan G.*	Con	1,289	-
Huxley E.*	Con	1,174	-
Dando J. Ms.	Lab	500	27.3
Kemp B.	Lab	475	-
Wimhurst S. Ms.	Lab	459	-
Turnout		49.1	45.4

Maypole (2743) ²			
		vote	share
Luck J. Ms.	Con	748	53.9
Horley A.	Con	730	-
Duffy F. Ms.	Lab	343	24.7
Sweetland R. Ms.	Lab	306	-
Marsh P.	LD	296	21.3
Turnout		49.3	29.2

Miskin (2154) ²			
		vote	share
Smith T.*	Con	505	44.9
Smith A.*	Con	496	-
Kipps R.	Lab	326	29.0
North S.	Lab	305	-
Whittington-Ince P.	LD	293	26.1
Turnout		50.5	15.9

Newtown (3653) ³			
		vote	share
Stockley A. Ms.*	Con	854	45.4
Baker D.	Lab	843	44.8
Brown C.	Con	827	-
Dougherty B.	Lab	820	-
Marr R.	Con	802	-
Dougherty M. Ms.	Lab	783	-
Jelf C.	Green	186	9.9
Turnout		51.9	0.6

Princes (3993) ³			
		vote	share
May A.*	Lab	1,316	74.6
Stock M. Ms.	Lab	1,077	-
Wimhurst A. Ms.	Lab	947	-
Carpenter J.	Con	448	25.4
Storey R. Ms.	Con	437	-
Rickwood J. Ms.	Con	401	-
Turnout		47.2	49.2

Priory (1372)			
		vote	share
Smith B.*	Con	397	51.9
Sherrell S.	Lab	368	48.1
Turnout		56.0	3.8

Southfleet (982)			
		vote	share
Salway M. Ms.*	Con	420	76.5
Wise J. Ms.	Lab	129	23.5
Turnout		55.9	53.0

Stone (4189) ³			
		vote	share
Sweetland D.*	Lab	839	48.0
Phillips H.*	Lab	771	-
Hardon D. Ms.*	Lab	691	-
Jarvis J.	Con	477	27.3
Read J.	Ind	433	24.8
Wedgbury J.	Con	418	-
Khoough P.	Con	408	-
Dunn D.	Ind	389	-
Worrell D.	Ind	319	-
Turnout		41.2	20.7

Sutton At Hone & Hawley (3135) ²			
		vote	share
Coleman P.*	Con	901	61.6
Nothard M.*	Con	832	-
Masson M. Ms.	Lab	561	38.4
Winhurst D.	Lab	529	-
Turnout		47.3	23.3

Swanscombe (2318) ²			
		vote	share
Read B.*	Res	708	56.3
Crow P.*	Res	655	-
Munn M.	Lab	549	43.7
Roberts P.	Lab	459	-
Turnout		52.3	12.6

Wilmington Central (1754)			
		vote	share
Jessop R.*	Con	522	51.2
James P.	Lab	497	48.8
Turnout		59.0	2.5

Wilmington East (1299)			
		vote	share
Youseman A.	Con	320	55.4
Burke A. Ms.	Lab	258	44.6
Turnout		45.2	10.7

Wilmington West (2433) ²			
		vote	share
Allen A. Ms.*	Con	897	69.6
Gillham A.*	Con	832	-
Steele G.	Lab	392	30.4
Franklin I.	Lab	383	-
Turnout		52.2	39.2

Dartford - 1995

Bean (1254)			
		vote	share
Hammock D.	Con	329	50.8
Withstandley B. Ms.	Lab	319	49.2
Turnout		51.8	1.5

Brent (4200) ³			
		vote	share
Dando M.*	Lab	1,317	68.0
Bryant R. Ms.	Lab	1,273	-
Eaton M. Ms.	Lab	1,250	-
Austin J. Ms.*	Con	621	32.0
East S. Ms.	Con	591	-
Sandhu A.	Con	582	-
Turnout		48.3	35.9

Darenth (2758)²			
		vote	share
Cook T.*	Lab	867	74.9
Carey S.	Lab	818	-
Ballard B.	Con	291	25.1
Kirby J.	Con	269	-
Turnout		43.0	49.7

Galley Hill (2278)²			
		vote	share
Crosby M.*	Ind Lab	586	47.8
Freed W.	Lab	364	29.7
Read I. Ms.	Res	277	22.6
Harvey J.	Res	255	-
Masson J.*	Lab	233	-
Turnout		42.5	18.1

Greenhithe (2937)²			
		vote	share
Lawrie M. Ms.*	Lab	507	50.9
Steele G.	Lab	486	-
Jones G.	Res	257	25.8
Bartlett R.	Res	250	-
Broadley C.	Ind	233	23.4
East W.	Ind	226	-
Turnout		35.3	25.1

Gundulf (3213)³			
		vote	share
Batty A. Ms.	Lab	911	54.3
Prout G.	Lab	895	-
Stoate D. Ms.	Lab	886	-
Smith W. Ms.	Con	594	35.4
Thurlow K.*	Con	575	-
Horley A.*	Con	537	-
Fenning K.	LD	174	10.4
Turnout		52.1	18.9

Heath (4100)³			
		vote	share
Stock V.	Lab	984	50.5
May D.	Lab	981	-
Leadbeater K.*	Con	848	43.5
Maxted R.*	Con	812	-
Kite J.	Con	793	-
Wimhurst D.	Lab	787	-
Mendis A.	Ind	117	6.0
Turnout		47.7	7.0

Horns Cross (1190)			
		vote	share
Jones I.*	Lab	447	87.0
Rider V. Ms.	Con	67	13.0
Turnout		43.4	73.9

Joyce Green (2360)²			
		vote	share
Muckle A. Ms.*	Lab	734	88.1
Eaton L.*	Lab	663	-
Willmott R.	Con	99	11.9
Rickwood J. Ms.	Con	95	-
Turnout		38.8	76.2

Littlebrook (3071)²			
		vote	share
Muckle J.*	Lab	953	84.1
Stoate H.*	Lab	899	-
Muller C.	Con	180	-
Horley J. Ms.	Con	180	15.9
Turnout		38.7	68.2

Longfield (3933)³			
		vote	share
Bassam A.*	Con	822	35.9
Burnan G.*	Con	750	-
Higgins R.	Res	646	28.2
Huxley E.*	Con	642	-
Pearson-Coffey N.	Lab	538	23.5
Bryant J.	Lab	511	-
Jaggs D.	Lab	463	-
Mack A.	Ind	282	12.3
Turnout		43.9	7.7

Maypole (2600)²			
		vote	share
Pascoe A.	Con	597	51.0
Pascoe J. Ms.*	Con	576	-
Wood B.	Lab	574	49.0
Wise J. Ms.	Lab	518	-
Turnout		46.3	2.0

Miskin (2229)²			
		vote	share
Byrne F.	Lab	592	59.4
Rogers T.	Lab	576	-
Smith T.*	Con	405	40.6
Smith A.*	Con	404	-
Turnout		47.0	18.8

Newtown (3919)³			
		vote	share
Baker D.*	Lab	1,017	69.3
Brooker A.	Lab	1,005	-
Burningham R.	Lab	946	-
Brown C.*	Con	451	30.7
Mackney J. Ms.	Con	414	-
Wilding P.	Con	378	-
Turnout		40.0	38.6

Princes (3902)³			
		vote	share
May A.*	Lab	1,301	82.7
Stock M. Ms.*	Lab	1,110	-
Wimhurst A. Ms.*	Lab	1,068	-
Storey R. Ms.	Con	272	17.3
Green R.	Con	229	-
Wedgbury J.	Con	219	-
Turnout		42.0	65.4

Priory (1741)			
		vote	share
Sampson L.	Lab	426	62.4
Smith B.*	Con	257	37.6
Turnout		39.3	24.7

Southfleet (1033)			
		vote	share
Salway M. Ms.*	Con	310	64.2
Dando J. Ms.	Lab	173	35.8
Turnout		47.2	28.4

Stone (4784)³			
		vote	share
Sweetland D.*	Lab	975	60.4
Sweetland R. Ms.	Lab	935	-
Phillips H.*	Lab	928	-
Dunn D.	Ind Dem	338	20.9
Read J.	Ind Dem	330	-
Jarvis J.	Con	301	18.6
Bell B. Ms.	Con	301	-
Side A. Ms.	Ind Dem	284	-
Thredgale S. Ms.	Con	276	-
Turnout		35.3	39.5

Sutton At Hone & Hawley (3155)²			
		vote	share
Coleman P.*	Con	709	52.8
Nicholls K.	Lab	635	47.2
Wimhurst S. Ms.	Lab	622	-
Nothard M.*	Con	600	-
Turnout		42.9	5.5

Swanscombe (2279)²			
		vote	share
Defty P.	Lab	578	56.8
Munn M.	Lab	555	-
Read B.*	Res	440	43.2
Crow P.*	Res	387	-
Turnout		44.9	13.6

Wilmington Central (1778)			
		vote	share
James P.	Lab	562	59.5
Mason L. Ms.	Con	354	37.5
Quilter A. Ms.	LD	28	3.0
Turnout		53.6	22.0

Wilmington East (1264)			
		vote	share
Maddison T.	Lab	312	54.6
Youseman A.*	Con	172	30.1
Tibby M.	LD	87	15.2
Turnout		45.3	24.5

Wilmington West (1835)²			
		vote	share
Allen A. Ms.*	Con	652	53.7
Gillham A.*	Con	595	-
Brooker D.	Lab	563	46.3
Burke A. Ms.	Lab	523	-
Turnout		50.5	7.3

Dartford - 1999

Bean (1234)			
		vote	share
Hammock D.*	Con	412	74.9
Whybrow D.	Lab	138	25.1
Turnout		44.8	49.8

Brent (4237)³			
		vote	share
Dando M.*	Lab	837	62.2
Eaton M. Ms.*	Lab	803	-
Bryant R. Ms.*	Lab	802	-
Howson S. Ms.	Con	508	37.8
Prior E.	Con	499	-
Horley J. Ms.	Con	487	-
Turnout		33.2	24.5

Darenth (2865)²			
		vote	share
Carey S.*	Lab	597	68.5
Cook T.*	Lab	596	-
Ballard B.	Con	274	31.5
Kirby J.	Con	250	-
Turnout		31.5	37.1

Galley Hill (2250)²			
		vote	share
Crosby M.*	Ind Lab	304	48.6
Dold H.	Lab	184	29.4
Jackson M.	Res	137	21.9
Fulcher A. Ms.	Lab	135	-
Harvey J.	Res	95	-
Poppy T.	Ind Lab	57	-
Turnout		24.8	19.2

Greenhithe (3074)²			
		vote	share
Broadley C.	Res	335	55.1
Jones M. Ms.	Res	324	-
Lawrie M. Ms.*	Lab	273	44.9
Parry T.	Lab	267	-
Turnout		20.5	10.2

Gundulf (3301)³			
		vote	share
Stoate D. Ms.*	Lab	847	62.1
Batty A. Ms.*	Lab	832	-
Prout G.*	Lab	820	-
Shakespeare D. Ms.	Con	518	37.9
Horley A.	Con	492	-
Wedgbury J.	Con	477	-
Turnout		42.0	24.1

Heath (4147)³			
		vote	share
Smith T.	Con	878	54.9
Leadbeater K.*	Con	848	-
Thurlow P.	Con	816	-
May T. Ms.	Lab	722	45.1
Stock D.	Lab	711	-
Street G. Ms.	Lab	682	-
Turnout		39.5	9.8

Horns Cross (1347)			
		vote	share
Jones I.*	Lab	239	58.2
Read J.	Ind	127	30.9
Muller C.	Con	45	10.9
Turnout		30.7	27.3
Joyce Green (2670)²			
		vote	share
Muckle A. Ms.*	Lab	493	72.9
Eaton L.*	Lab	488	-
Simpson J. Ms.	Con	104	15.4
Rickwood J. Ms.	Con	98	-
Buchanan D.	LD	79	11.7
Turnout		25.6	57.5
Littlebrook (2993)²			
		vote	share
Muckle J.*	Lab	562	76.3
Sawford A.	Lab	490	-
Davies D.	Con	175	23.7
Newell P. Ms.	Con	71	-
Turnout		25.5	52.5
Longfield (3966)³			
		vote	share
Dunn R.	Con	904	54.6
Bassam A.*	Con	865	-
Kite J.*	Con	842	-
Higgins R.*	Res	463	27.9
Eagles R.	Res	433	-
Rice J.	Res	352	-
Jordan A.	Lab	290	17.5
Beckett P.	Lab	259	-
Jansseune M. Ms.	Lab	254	-
Turnout		40.8	26.6
Maypole (3966)²			
		vote	share
Hamilton R.*	Con	559	65.1
Brown C.*	Con	555	-
Burke A. Ms.	Lab	300	34.9
Sherrell S.	Lab	284	-
Turnout		32.7	30.2
Miskin (2341)²			
		vote	share
Byrne F.*	Lab	536	53.4
Rodgers T.*	Lab	499	-
Lampkin E.	Con	468	46.6
Marr R.	Con	445	-
Turnout		42.8	6.8
Newtown (4029)³			
		vote	share
Baker D.*	Lab	713	68.6
Brooker A.*	Lab	697	-
Steele G.	Lab	636	-
Etheridge R.	Con	327	31.4
Salway A.	Con	323	-
Coleman D. Ms.	Con	311	-
Turnout		27.4	37.1
Princes (4119)³			
		vote	share
May D.*	Lab	747	70.3
Stock M. Ms.*	Lab	702	-
Stock V.*	Lab	650	-
Macleod M.	Con	224	21.1
Green R.	Con	221	-
Osborne E. Ms.	Con	209	-
Ripley P.	Ind	92	8.7
Turnout		25.9	49.2
Priory (1675)			
		vote	share
Wood B.	Lab	260	62.7
O'Neill M.	Con	155	37.3
Turnout		24.8	25.3

Southfleet (1060)			
		vote	share
Salway M. Ms.*	Con	387	82.7
Dando J. Ms.	Lab	81	17.3
Turnout		44.5	65.4
Stone (5021)³			
		vote	share
Phillips H.*	Lab	620	65.1
Lawson D.	Lab	609	-
Ward D.	Lab	576	-
Bell B. Ms.	Con	333	34.9
Wightman N. Ms.	Con	319	-
Cole P. Ms.	Con	315	-
Turnout		20.3	30.1
Sutton At Hone & Hawley (3248)²			
		vote	share
Coleman P.*	Con	775	61.9
Northard M.	Con	653	-
De Winston S.	Lab	478	38.1
Nicholls K.*	Lab	450	-
Turnout		38.3	23.7
Swanscombe (2191)²			
		vote	share
Read B.*	Res	357	53.3
Munn M.*	Lab	313	46.7
Defy P.*	Lab	297	-
Cunningham W.	Res	260	-
Turnout		29.8	6.6
Wilmington Central (1824)			
		vote	share
James P.*	Lab	496	55.8
Hunnisett D.	Con	393	44.2
Turnout		49.1	11.6
Wilmington East (1313)			
		vote	share
Maddison T.*	Lab	282	62.1
Peters M. Ms.	Con	172	37.9
Turnout		34.7	24.2
Wilmington West (2445)²			
		vote	share
Allen A. Ms.*	Con	849	71.4
Manson L. Ms.*	Con	781	-
Brooker D.	Lab	340	28.6
Shoult J.	Lab	297	-
Turnout		48.4	42.8
Dartford - 2003			
Bean & Darenth (4326)³			
		vote	share
Bull S.	Con	750	48.2
Hammock D.*	Con	737	-
Armitt I.	Con	667	-
Cook T.*	Lab	591	38.0
Carey S.*	Lab	579	-
Carson R.	Lab	454	-
O'Rourke T. Ms.	LD	142	9.1
Kent D.	UK Ind	74	4.8
Turnout		35.2	10.2
Brent (4773)³			
		vote	share
Fickling K.	Con	800	46.6
Karamuth S. Ms.	Con	781	-
Wightman N. Ms.	Con	779	-
Dando M.*	Lab	712	41.5
Eaton M. Ms.*	Lab	679	-
Bryant R. Ms.	Lab	678	-
Overy P.	UK Ind	205	11.9
Turnout		36.2	5.1

Castle (1016)			
		vote	share
East S. Ms.	Con	130	41.4
Reeves A.	LD	127	40.4
Wise J. Ms.	Lab	57	18.2
Turnout		31.1	1.0
Greenhithe (3294)³			
		vote	share
Murphy M.	Sw&Gr RA	329	37.2
Fitzpatrick B.	Sw&Gr RA	322	-
Broadley C.*	Con	316	35.7
Openshaw V.	Sw&Gr RA	290	-
Ozog J. Ms.	Con	234	-
Storey R. Ms.	Con	232	-
Francis B.*	Lab	196	22.2
Prior C.	Lab	190	-
Mahy M.	Lab	190	-
Reed S. Ms.	UK Ind	43	4.9
Fullagar A. Ms.	UK Ind	23	-
Turnout		25.7	1.5
Heath (4733)³			
		vote	share
Smith T.*	Con	874	47.3
Leadbeater K.*	Con	847	-
Thurlow P. Ms.*	Con	788	-
Kelly P.	Lab	486	26.3
May M. Ms.	Lab	481	-
Kingston J.	Lab	449	-
Howell W.	UK Ind	261	14.1
Cherek P. Ms.	LD	225	12.2
Keane M.	LD	224	-
Turnout		35.6	21.0
Joyce Green (2616)²			
		vote	share
Muckle A. Ms.*	Lab	321	53.3
Bryant M.*	Lab	303	-
Day R.	UK Ind	191	31.7
Croucher M.	UK Ind	177	-
Garden B.	Con	90	15.0
Peters A. Ms.	Con	87	-
Turnout		24.9	21.6
Joydens Wood (4553)³			
		vote	share
Allen A. Ms.*	Con	1,060	66.9
Peters M. Ms.	Con	1,056	-
Rickwood J. Ms.	Con	1,050	-
Maddison V. Ms.	Lab	398	25.1
Sherrell S.	Lab	367	-
Bryant J.	Lab	362	-
Tarling A.	UK Ind	126	8.0
Turnout		34.6	41.8
Littlebrook (3093)²			
		vote	share
Muckle J.*	Lab	321	34.5
Tibby M.	NewE	276	29.7
De Winton S.	Lab	271	-
Martin T.	Con	131	14.1
Pickersgill D.	Con	123	-
Llewellyn E.	UK Ind	117	12.6
Mayell G.	UK Ind	88	-
Reeves R.	LD	85	9.1
Turnout		25.9	4.8
Longfield New Barn & Southfleet (5107)³			
		vote	share
Kite J.*	Con	1,417	54.0
Dunn R.*	Con	1,393	-
Bassam A.*	Con	1,383	-
Salway M. Ms.	Ind	715	27.2
Grainger F.	Ind	402	-
Mack A.	Ind	364	-
Jordan A.	Lab	326	12.4
Keane S. Ms.	LD	168	6.4
Reeves A.	LD	143	-
Toth M.	LD	124	-
Turnout		45.6	26.7

Newtown (5020) ³			
		vote	share
Baker D.*	Lab	661	52.9
Brooker A.*	Lab	614	-
Steele G.*	Lab	536	-
Etheridge R.	Con	432	34.6
Lloyd A.	Con	415	-
Sandhu A.	Con	399	-
Williamson Q.	UK Ind	157	12.6
Turnout		24.8	18.3

Princes (4468) ³			
		vote	share
May D.*	Lab	661	56.7
Stock M. Ms.*	Lab	614	-
Stock V.*	Lab	595	-
Martin S. Ms.	Con	284	24.4
Strachan D.	Con	267	-
Oborne E. Ms.	Con	252	-
Wiltshire M.	UK Ind	221	19.0
Wiltshire S. Ms.	UK Ind	205	-
Turnout		25.4	32.3

Stone (4533) ³			
		vote	share
Jones I.*	Lab	601	65.0
Lawson D.*	Lab	540	-
Jones B.	Lab	517	-
Bell B. Ms.	Con	223	24.1
Coleman D. Ms.	Con	197	-
Cox S. Ms.	Con	191	-
Reed J.	UK Ind	100	10.8
Turnout		20.3	40.9

Sutton At Hone & Hawley (3205) ²			
		vote	share
Coleman P.*	Con	875	76.7
Martin A.*	Con	789	-
Burke A. Ms.	Lab	266	23.3
Lineham J. Ms.	Lab	247	-
Turnout		35.7	53.4

Swanscombe (4719) ³			
		vote	share
Read B.*	Sw&Gr RA	628	39.9
Bobby L.	Sw&Gr RA	528	-
Hayes J.	Sw&Gr RA	473	-
Dold H.*	Lab	455	28.9
Crosby M.*	Ind	419	26.6
Hills D.	Lab	312	-
Mahy A. Ms.	Lab	290	-
Green R.	Con	71	4.5
Kite J. Ms.*	Con	68	-
Macleod M.	Con	59	-
Turnout		27.5	11.0

Town (2901) ²			
		vote	share
Rogers T.*	Lab	264	37.4
Appadoo D. Ms.	Lab	244	-
Shippam C.	Con	239	33.9
Shippam G.	Con	176	-
Easto A.	LD	127	18.0
Rice A.	UK Ind	75	10.6
Turnout		23.2	3.5

West Hill (4083) ³			
		vote	share
Stoate D. Ms.*	Lab	736	38.8
Prout G.*	Lab	714	-
Byrne F.*	Lab	706	-
Davis M.	Con	673	35.4
Shippam J. Ms.	Con	657	-
Wells T. Ms.	Con	637	-
Keane S. Ms.	LD	413	21.7
Melillo F. Ms.	LD	394	-
Gebbett A.	LD	388	-
Roach T.	UK Ind	77	4.1
Turnout		46.6	3.3

Wilmington (3093) ²			
		vote	share
Hunnisett D.	Con	870	60.7
Lampkin E.	Con	809	-
Maddison T.*	Lab	564	39.3
Settle C. Ms.	Lab	536	-
Turnout		46.5	21.3

Dartford - 2007

Bean & Darenth (4201) ³			
		vote	share
Hammock D.*	Con	842	51.5
Armitt I.*	Con	794	-
Shanks R. Ms.	Con	760	-
Cook T.	Lab	511	31.2
Pearson-Coffey N.	Lab	452	-
Hills D.	Lab	401	-
Adamthwaite P.	Edem	283	17.3
Turnout		37.1	20.2

Brent (4909) ³			
		vote	share
Wightman N. Ms.*	Con	905	43.3
Brown S.	Con	902	-
Peters A. Ms.	Con	874	-
Russell S. Ms.	Lab	707	33.8
Sturley G.	Lab	661	-
Rai Z.	Lab	646	-
Johnston R.	Edem	341	16.3
Chattenton J.	Edem	331	-
Powell L. Ms.	Edem	315	-
Williamson Q.	UKIP	136	6.5
Turnout		43.4	9.5

Castle (1285)			
		vote	share
East S. Ms.*	Con	236	60.5
Blankley L. Ms.	Lab	78	20.0
Moore F. Ms.	Edem	76	19.5
Turnout		30.7	40.5

Greenhithe (4255) ³			
		vote	share
Openshaw V.	S&G RA	679	55.1
Johnston S.	S&G RA	607	-
Scanlan P.	S&G RA	584	-
Cole P. Ms.	Con	376	30.5
Masson J.	Lab	178	14.4
Masson M. Ms.	Lab	176	-
Wimhurst S. Ms.	Lab	165	-
Turnout		26.4	24.6

Heath (4821) ³			
		vote	share
Lloyd A.*	Con	1,065	51.4
Smith T.*	Con	1,059	-
Thurlow P. Ms.*	Con	872	-
Griffiths J.	Edem	507	24.5
Brooker S. Ms.	Lab	501	24.2
Sweetland R. Ms.	Lab	416	-
Wise J. Ms.	Lab	404	-
Turnout		40.8	26.9

Joyce Green (2801) ²			
		vote	share
Muckle A. Ms.*	Lab	487	42.5
Bryant M.*	Lab	447	-
Sauders K.	BNP	328	28.6
Martin T.	Con	173	15.1
Day R.	UKIP	157	13.7
Sandhu R.	Con	109	-
Turnout		36.6	13.9

Joydens Wood (5439) ³			
		vote	share
Allen A. Ms.*	Con	1,633	78.5
Peters M. Ms.*	Con	1,603	-
Rickwood J. Ms.*	Con	1,586	-
Brookman J. Ms.	Edem	232	11.2
Barnett R. Ms.	Lab	214	10.3
Burleigh S.	Lab	213	-
Maddison V. Ms.	Lab	210	-
Turnout		38.5	67.4

Littlebrook (2985) ²			
		vote	share
Muckle J.*	Lab	425	46.1
Maddison T.	Lab	391	-
Tibby M.*	Edem	330	35.8
Vaughan A.	Edem	264	-
Marsh R.	Con	166	18.0
Garden B.	Con	138	-
Turnout		32.0	10.3

Longfield New Barn & Southfleet (5142) ³			
		vote	share
Kite J.*	Con	1,559	53.0
Perfitt R.	Con	1,420	-
Pickersgill D.	Con	1,080	-
Salway M. Ms.	Ind	858	29.2
Jordan A.	Lab	353	12.0
Beckett P.	Lab	335	-
Jansseune M. Ms.	Lab	297	-
Cooper P.	Edem	172	5.8
Turnout		45.2	23.8

Newtown (5170) ³			
		vote	share
Baker D.*	Lab	760	38.8
Bardoe A.	Con	653	33.3
Gallagher C.	Con	627	-
Blankley P.	Lab	620	-
Sandhu A.	Con	598	-
De Winton S.	Lab	577	-
Read J.	Edem	319	16.3
Croucher M.	UKIP	228	11.6
Latif T. Ms.	UKIP	205	-
Turnout		33.8	5.5

Princes (4448) ³			
		vote	share
May D.*	Lab	712	40.4
Prout G.*	Lab	657	-
Stock M. Ms.*	Lab	656	-
Shippam J. Ms.	Con	428	24.3
Painter E. Ms.	Edem	382	21.7
Swinerd D.	Con	363	-
Wells R.	Con	362	-
Sloan L. Ms.	UKIP	241	13.7
Turnout		35.0	16.1

Stone (4501) ³			
		vote	share
Bryant R. Ms.	Lab	570	46.4
Angell C. Ms.	Lab	566	-
Lawson D.*	Lab	555	-
Jarvis J.	Con	482	39.2
Richards T. Ms.	Con	454	-
Martin S. Ms.	Con	418	-
Settle D. Ms.	Edem	177	14.4
Turnout		27.6	7.2

Sutton At Hone & Hawley (3261) ²			
		vote	share
Coleman P.*	Con	815	61.0
Martin A.*	Con	664	-
Uncles S.	Edem	224	16.8
Nicholls K.	Lab	220	16.5
Jones C. Ms.	Lab	199	-
Pay G.	Peace P	78	5.8
Turnout		38.0	44.2

Swanscombe (4707) ³			
		vote	share
Read B.*	S&G RA	946	78.1
Bobby L.*	S&G RA	897	-
Hayes J.*	S&G RA	879	-
Bryant J.	Lab	265	21.9
Goldstein J. Ms.	Lab	246	-
Steele G.	Lab	223	-
Turnout		27.0	56.2

Town (2810) ²			
		vote	share
Davis M.	Con	391	44.1
Shippam C.	Con	352	-
Rogers T.*	Lab	288	32.5
Appadoo D. Ms.*	Lab	263	-
Jackson M.	Edem	148	16.7
Cannon T. Ms.	Edem	142	-
Tarling A.	UKIP	59	6.7
Turnout		31.2	11.6

West Hill (4286) ³			
		vote	share
Stoate D. Ms.*	Lab	832	40.9
Wells A.	Con	825	40.5
Ozog J. Ms.	Con	768	-
Kelly P.	Lab	754	-
Blankley S.	Lab	704	-
Sangar K.	Con	687	-
Shippam J. Ms.	Edem	378	18.6
Rees C. Ms.	Edem	352	-
Wilson A.	Edem	343	-
Turnout		47.8	0.3

Wilmington (3118) ²			
		vote	share
Hunnisett D.*	Con	1,008	65.2
Lampkin E.*	Con	906	-
Kingston J.	Lab	310	20.0
May M. Ms.	Lab	285	-
Uncles L. Ms.	Edem	229	14.8
Turnout		46.8	45.1

Dartford - 2011

Bean & Darenth (4144) ³			
		vote	share
Armitt I.*	Con	908	58.5
Hammock D.*	Con	886	-
Shanks R. Ms.*	Con	824	-
Eaton M. Ms.	Lab	416	26.8
Pearson A.	Lab	362	-
Wimhurst S. Ms.	Lab	358	-
Culliford S.	Edem	227	14.6
Rogers G.	Edem	185	-
Tibby N.	Edem	175	-
Turnout		38.5	31.7

Brent (5058) ³			
		vote	share
Wightman N. Ms.*	Con	1,152	52.8
Swinerd D.	Con	1,129	-
Cannon P.	Con	1,115	-
Bryant J.	Lab	779	35.7
Athwal R.	Lab	638	-
Nicholson C.	Lab	616	-
Tibby M.	Edem	252	11.5
Chattenton J.	Edem	211	-
Jackson M.	Edem	193	-
Turnout		44.8	17.1

Castle (1888)			
		vote	share
East S. Ms.*	Con	337	56.4
Appadoo D. Ms.	Lab	122	20.4
Lees R.	S&G RA	83	13.9
Moore F. Ms.	Edem	56	9.4
Turnout		32.2	36.0

Greenhithe (4634) ³			
		vote	share
Butterfill S. Ms.	S&G RA	572	37.9
Kelly K.	Con	550	36.5
Mote D.	Con	537	-
Harman P.	S&G RA	501	-
Flaherty V. Ms.	Con	478	-
Openshaw V.*	S&G RA	467	-
Masson J.	Lab	295	19.6
Masson M. Ms.	Lab	289	-
Wise J. Ms.	Lab	287	-
Cooper D. Ms.	Edem	91	6.0
Turnout		32.4	1.5

Heath (4923) ³			
		vote	share
Lloyd A.*	Con	1,501	63.6
Thurlow P. Ms.*	Con	1,401	-
Wells R.	Con	1,365	-
Barnett R. Ms.	Lab	591	25.0
Stock D.	Lab	560	-
Celino R.	Lab	534	-
White-Griffiths C. Ms.	Edem	268	11.4
Turnout		48.2	38.6

Joyce Green (3103) ²			
		vote	share
Muckle A. Ms.*	Lab	543	49.8
Bryant M.*	Lab	512	-
Shewhippe S.	Con	281	25.8
White T.	Con	211	-
Gardner G.	Edem	176	16.1
Simmonds W.	LD	91	8.3
Sakellariou G.	LD	68	-
Turnout		34.3	24.0

Joydens Wood (5492) ³			
		vote	share
Allen A. Ms.*	Con	1,766	70.3
Peters M. Ms.*	Con	1,717	-
Rickwood J. Ms.*	Con	1,661	-
Blankley P.	Lab	515	-
Brooker S. Ms.	Lab	515	20.5
Allen M.	Lab	501	-
Williams L.	Edem	232	9.2
Turnout		47.0	49.8

Littlebrook (3032) ²			
		vote	share
Muckle J.*	Lab	585	54.8
Maddison T.*	Lab	504	-
Ozog J. Ms.	Con	256	24.0
Sandhu R.	Con	233	-
Wells P.	Edem	226	21.2
Turnout		35.8	30.8

Longfield New Barn & Southfleet (5178) ³			
		vote	share
Kite J.*	Con	1,828	56.0
Brown S.*	Con	1,747	-
Perfitt R.*	Con	1,562	-
Macdonald J. Ms.	Ind	493	15.1
Stafford C. Ms.	Lab	449	13.7
Jansseune M. Ms.	Lab	378	-
Ward J.	Lab	323	-
Burton C.	Green	316	9.7
Thandi S. Ms.	UKIP	181	5.5
Turnout		53.1	40.9

Newtown (5094) ³			
		vote	share
Reynolds G.	Con	951	46.2
Sandhu A.	Con	938	-
Street M.	Con	898	-
Baker D.*	Lab	842	40.9
Flint H. Ms.	Lab	733	-
Rai G.	Lab	679	-
Saines D. Ms.	Edem	265	12.9
Read J.	Edem	225	-
Uncles L. Ms.	Edem	213	-
Turnout		42.2	5.3

Princes (4466) ³			
		vote	share
Bryant R. Ms.*	Lab	811	50.2
Kelly P.	Lab	728	-
Prout G.*	Lab	684	-
Storey R. Ms.	Con	536	33.2
Shippam J. Ms.	Con	529	-
Jarnell S.	Con	526	-
Dunmall C. Ms.	Edem	268	16.6
Turnout		36.6	17.0

Stone (4529) ³			
		vote	share
Burrell J.	Con	713	46.1
Adams J.	Lab	642	41.5
Hawkes J.	Lab	609	-
Rogers M. Ms.	Con	588	-
Badwal I.	Lab	560	-
Wells B.	Con	544	-
Cooper P.	Edem	192	12.4
Turnout		33.9	4.6

Sutton At Hone & Hawley (3260) ²			
		vote	share
Coleman P.*	Con	960	65.4
Martin A.*	Con	817	-
De Winton S.	Lab	371	25.3
Fallick S. Ms.	Lab	322	-
Bousfield C.	Edem	137	9.3
Turnout		45.2	40.1

Swanscombe (4936) ³			
		vote	share
Read B.*	S&G RA	1,063	65.1
Bobby L.*	S&G RA	1,011	-
Hayes J.*	S&G RA	993	-
Burke A. Ms.	Lab	359	22.0
May D.*	Lab	342	-
May M. Ms.	Lab	303	-
Wilders S.	UKIP	211	12.9
Turnout		33.0	43.1

Town (2991) ²			
		vote	share
Davis M.*	Con	533	48.6
Shippam C.*	Con	495	-
Jones C. Ms.	Lab	391	35.7
Kettley I.	Lab	354	-
Potton N.	Edem	129	11.8
Waghorn A.	Edem	106	-
Brown A.	Ind	43	3.9
Nurhakli H.	Ind	26	-
Turnout		37.6	13.0

West Hill (4985) ³			
		vote	share
Bardoe A.*	Con	1,145	48.2
Wells A.*	Con	1,142	-
Ozog J. Ms.*	Con	1,028	-
Angell C. Ms.*	Lab	756	31.8
Sturley G.	Lab	666	-
Taiwo-Brown S.	Lab	660	-
Griffiths J.	Edem	258	10.9
Duncan M. Ms.	Edem	225	-
Shippam J. Ms.	Ind	218	9.2
Uncles S.	Edem	188	-
Turnout		47.1	16.4

Wilmington (3154) ²			
		vote	share
Hunnisett D.*	Con	1,071	70.9
Lampkin E.*	Con	960	-
Hills D.	Lab	322	21.3
Steele G.	Lab	316	-
Cannon T. Ms.	Edem	117	7.7
Turnout		47.3	49.6

