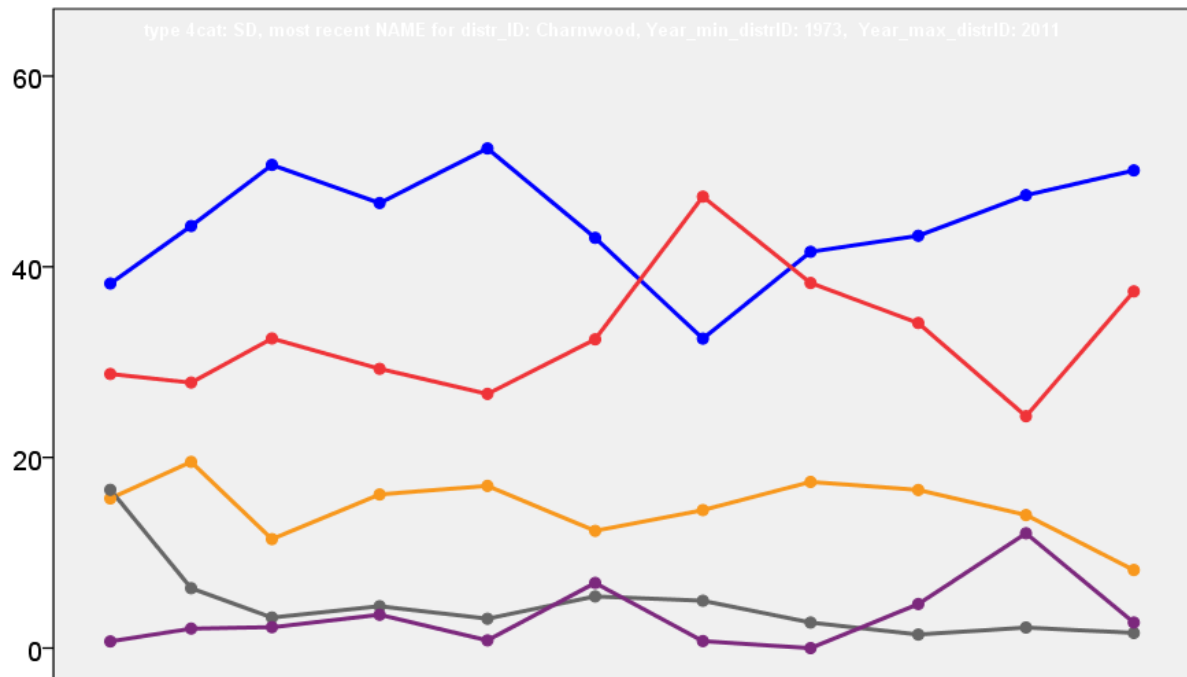


Charnwood Borough Council Election Results 1973-2011



Colin Rallings and Michael Thrasher
The Elections Centre
Plymouth University

The information contained in this report has been obtained from a number of sources. Election results from the immediate post-reorganisation period were painstakingly collected by Alan Willis largely, although not exclusively, from local newspaper reports. From the mid-1980s onwards the results have been obtained from each local authority by the Elections Centre. The data are stored in a database designed by Lawrence Ware and maintained by Brian Cheal and others at Plymouth University. Despite our best efforts some information remains elusive whilst we accept that some errors are likely to remain. Notice of any mistakes should be sent to elections@plymouth.ac.uk. The results sequence can be kept up to date by purchasing copies of the annual Local Elections Handbook, details of which can be obtained by contacting the email address above.

Front cover: the graph shows the distribution of percentage vote shares over the period covered by the results. The lines reflect the colours traditionally used by the three main parties. The grey line is the share obtained by Independent candidates while the purple line groups together the vote shares for all other parties.

Rear cover: the top graph shows the percentage share of council seats for the main parties as well as those won by Independents and other parties. The lines take account of any by-election changes (but not those resulting from elected councillors switching party allegiance) as well as the transfers of seats during the main round of local election.

The lower graph shows for each main round of local elections the overall percentage turnout (solid line), the percentage of women candidates standing at (dotted line) and the percentage of women among those elected (hashed line).

Charnwood - 1973

Bradgate (5241)³

		vote	share
Hagger S.	Ind	853	62.6
Walker J.	Ind	623	-
Squires J.	Ind	594	-
Williams H.	Lab	510	37.4
McAllister C.	Lab	402	-
Ames W.	Lab	359	-
Fraser W.	Ind	233	-
Turnout		26.0	25.2

East Goscote (1782)

		vote	share
Kirkland J.	Ind	384	78.5
Bean L.	Con	105	21.5
Turnout		27.4	57.1

Loughborough Hastings (3690)²

		vote	share
Jones M.	Lab	1,356	73.9
Walker J.	Lab	1,227	-
Jones E.	Lib	291	15.8
Taylor G.	Lib	223	-
Jarrom D.	Con	189	10.3
Aditya J.	Con	129	-
Turnout		49.8	58.0

Loughborough Lemyngton (3993)³

		vote	share
Hancock R.	Lib	1,421	61.8
Marriott A.	Lib	1,196	-
Thompson J.	Lib	1,121	-
Heap J.	Lab	698	30.4
Duncan J.	Lab	568	-
Gupta S.	Lab	489	-
Bailey L.	Con	179	7.8
Wright L.	Con	147	-
Turnout		57.6	31.5

No. 1 (Loughborough: Beaumont) (7365)⁴

		vote	share
Abell J.	Lab	1,392	42.7
Evans G.	Lab	1,364	-
Page G.	Lab	1,228	-
Menday J. Ms.	Ind	1,219	37.4
Wrigley C.	Lab	1,192	-
Allen R.	Con	648	19.9
Johnson A. Ms.	Con	648	-
Turnout		44.2	5.3

No. 10 (Rearsby) (1513)

		vote	share
Weston R.	Con	650	71.9
Sherriff D.	Ind Con	254	28.1
Turnout		59.7	43.8

No. 11 (Barrow Upon Soar) (3302)²

		vote	share
Scott E.	Ind	0	-
Walker C. Ms.	Ind	0	0.0
Turnout		0.0	0.0

No. 12 (Quorndon) (2690)²

		vote	share
Tatham C.	Con	497	57.3
Whyte B. Ms.	Con	491	-
Bloore R.	Ind	370	42.7
Unwin J.	Ind	206	-
Turnout		32.2	14.6

No. 13 (Sileby) (4501)³

		vote	share
Robinson D. Ms.	Ind	761	54.2
Parkinson A. Ms.	Ind	660	-
Barber G. Ms.	Con	643	45.8
Preston W.	Ind	498	-
Haberle S.	Con	465	-
Meadows J.	Con	429	-
Turnout		31.2	8.4

No. 14 (Mountsorrel) (3161)²

		vote	share
Newman H.	Ind	751	100.0
Daley L. Ms.	Ind	386	-
Scholes G.	Ind	299	-
Turnout		23.8	14.4

No. 15 (Woodhouse) (1600)

		vote	share
Thomas G. Ms.	Con	329	61.3
Pickavant W.	Ind	208	38.7
Turnout		33.6	22.5

No. 18 (Rothley) (2943)²

		vote	share
Byford M. Ms.	Con	870	76.7
Bradley L.	Con	715	-
Neale K.	Ind	265	23.3
Turnout		38.6	53.3

No. 19 (Birstall) (6634)⁵

		vote	share
Henson F. Ms.	Con	2,309	51.1
Bembridge W.	Con	2,306	-
Ward M. Ms.	Con	2,267	-
Shardlow E.	Con	2,263	-
Barry D.	Con	2,217	-
Wilson R.	Lib	1,120	24.8
Kelham R. Ms.	Lab	1,087	24.1
Cheetham D.	Lab	1,003	-
Cheetham A. Ms.	Lab	964	-
Rydz D.	Lib	946	-
Gilmour S. Ms.	Lab	925	-
Ratcliffe G. Ms.	Lab	923	-
Turnout		68.1	26.3

No. 2 (Loughborough: Burleigh) (7434)⁴

		vote	share
Duncan L.	Con	1,450	43.2
Caldwell G.	Con	1,437	-
Oakland E.	Con	1,398	-
Hammond F.	Con	1,231	-
Hancock E. Ms.	Lib	1,197	35.6
Gray F. Ms.	Lab	713	21.2
Smith R.	Lab	704	-
Gray K.	Lab	688	-
Burnham N.	Lab	584	-
Turnout		45.2	7.5

No. 20 (Thurmaston) (5750)⁴

		vote	share
Elliott M. Ms.	Con	836	44.6
Winterton C. Ms.	Con	828	-
Jarvis S.	Con	679	-
Cockhill T.	Con	592	-
Pratt C.	Ind	530	28.3
Follows C.	Lab	507	27.1
Littlefield W.	Lab	504	-
Campbell C.	Lab	472	-
Rose E.	Lab	450	-
Weston W.	Ind	413	-
Ball G.	Ind	389	-
D'Arcy K.	Ind	385	-
Turnout		32.6	16.3

No. 21 (Syston) (6265)⁴

		vote	share
Sharp M. Ms.	Con	956	56.4
Simpson M. Ms.	Con	926	-
Brown L.	Con	911	-
Gamble H.	Con	875	-
Winfield H.	Lab	740	43.6
Roberts S.	Lab	739	-
Hogg B.	Lab	630	-
West J.	Lab	618	-
Turnout		27.1	12.7

No. 23 (Queniborough) (1661)

		vote	share
Colton C. Ms.	Con	338	45.4
Crayfoud B.	Con	233	31.3
Boulter D.	Ind	174	23.4
Turnout		44.9	14.1

No. 3 (Loughborough: Burton) (4422)³

		vote	share
Green D.	Lab	933	55.5
Slater N.	Lab	928	-
Webster C.	Lab	926	-
Bell C.	Con	748	44.5
Hagger D.	Con	686	-
Miller L.	Con	684	-
Turnout		38.0	11.0

No. 6 (Loughborough: Southfields) (3250)²

		vote	share
Bennett M.	Lib	905	50.3
Powell R.	Lib	746	-
Wilson V.	Con	566	31.4
Johnson J.	Con	565	-
Duncan A.	Lab	329	18.3
Forsdick A.	Lab	302	-
Turnout		55.4	18.8

No. 7 (Loughborough: Storer) (4078)³

		vote	share
Deacon T.	Lab	689	39.9
Campbell G.	Lab	631	-
Ryan R.	Lab	591	-
O'Brien A.	Lib	524	30.3
Faulkner G.	Con	515	29.8
McKeown F.	Con	510	-
Cadwallader B. Ms.	Lib	492	-
Marshall G.	Lib	491	-
Pollard C.	Con	426	-
Turnout		42.4	9.5

No. 8 (Shepshed) (6393)⁴

		vote	share
Wood B.	Lab	1,513	51.6
Johnson M.	Con	1,422	48.4
Bradley J.	Con	1,382	-
Stackhouse B.	Lab	1,376	-
Marvin B.	Con	1,309	-
Perkins B.	Lab	1,307	-
Haddleton D.	Con	1,293	-
Armstrong P.	Lab	1,195	-
Turnout		45.9	3.1

No. 9 (Wymeswold) (1502)

		vote	share
Scarlett B.	Con	437	63.0
Yamanaka D. Ms.	Lib	257	37.0
Turnout		46.2	25.9

Thurcaston (1507)

		vote	share
Chapman C.	Con	0	0.0
Turnout		0.0	0.0

Charnwood - 1976

Bradgate (5244)³

		vote	share
Hagger S.	Con	990	32.2
Jolley F.	Lib	755	24.5
Kelly J.	Con	753	-
Fox E.	Lab	695	22.6
Day P.	Ind	638	20.7
Walker J.	Ind	481	-
Robinson D.	Lib	447	-
Ames W.	Lab	380	-
Stone R.	Lib	307	-
Turnout		43.8	7.6

East Goscote (1940)

		vote	share
Kirkland J.	Con	624	72.6
Kyle M.	Lab	235	27.4
Turnout		44.8	45.3

Loughborough Hastings (3606) ²			
		vote	share
Jones M.	Lab	1,345	66.5
Walker J.	Lab	1,022	-
Coote B.	Con	452	22.3
Preece V. Ms.	Con	421	-
Gupta R.	Lib	227	11.2
Hipwell B.	Lib	154	-

Turnout 56.1 44.1

Loughborough Lemyngton (3756) ³			
		vote	share
Heap J.	Lab	888	44.2
Dodd A.	Lab	769	-
Smith R.	Lab	740	-
Marriott A.	Lib	568	28.2
Marshall G.	Lib	383	-
Faulkner G.	Con	377	18.7
Doyle M.	Con	352	-
Johnson J.	Con	349	-
Thompson J.	Lib	349	-
Wood K.	Ind Lib	178	8.9

Turnout 49.8 15.9

No. 1 (Loughborough: Beaumont) (8970) ⁴			
		vote	share
Abell J.	Lab	2,099	45.0
Cawsey R.	Lab	2,026	-
Green D.	Lab	1,964	-
Page G.	Lab	1,843	-
Barry J.	Con	1,112	23.8
Bagley D.	Lib	1,095	23.5
Johnson A. Ms.	Con	1,075	-
Pollard C.	Con	970	-
Wright L.	Con	940	-
Morgan P.	NF	361	7.7
May F.	NF	340	-
Comery-Lang B.	NF	330	-

Turnout 44.8 21.1

No. 10 (Rearsby) (1569)			
		vote	share
Weston R.	Con	0	0.0

Turnout 0.0 0.0

No. 11 (Barrow Upon Soar) (3288) ²			
		vote	share
Walker C. Ms.	Con	0	0.0
Scott E.	Con	0	-

Turnout 0.0 0.0

No. 12 (Quorndon) (2673) ²			
		vote	share
Farnham C.	Con	909	82.2
Haberle S.	Con	764	-
Todd N.	Lab	197	17.8

Turnout 42.8 64.4

No. 13 (Sibley) (4931) ³			
		vote	share
Barber G. Ms.	Con	874	38.4
Mason M. Ms.	Ind	770	33.8
Robinson D. Ms.	Ind	740	-
Preston W.	Con	680	-
Roberts C.	Con	640	-
Rudkin J.	Lib	632	27.8
Sharpe N.	Lib	458	-
Elliott J.	Lib	394	-

Turnout 43.6 4.6

No. 14 (Mountsorrel) (3104) ²			
		vote	share
Newman H.	Ind	817	73.5
Burton R.	Ind	547	-
Daley Z. Ms.	Ind	484	-
Green J. Ms.	Lab	294	26.5
Knaggs D.	Lab	259	-

Turnout 43.8 47.1

No. 15 (Woodhouse) (1600)			
		vote	share
Thomas G. Ms.	Con	459	57.3
Siddons A.	Res	342	42.7

Turnout 50.9 14.6

No. 18 (Rothley) (2899) ²			
		vote	share
Byford M. Ms.	Con	1,044	71.8
Greenwood E.	Con	900	-
Lewis D.	Lib	411	28.2
Peasey D. Ms.	Lib	341	-

Turnout 51.4 43.5

No. 19 (Birstall) (9488) ⁵			
		vote	share
Henson F. Ms.	Con	2,880	63.5
Shardlow E.	Con	2,838	-
Burgess G.	Con	2,835	-
Barry D.	Con	2,829	-
Ward M. Ms.	Con	2,818	-
Pragnell J. Ms.	Lib	834	18.4
Cheatham A. Ms.	Lab	820	18.1
Downey P.	Lab	767	-
Kernan B.	Lab	754	-
Spooner T.	Lab	704	-
Cohen J.	Lab	700	-

Turnout 45.8 45.1

No. 2 (Loughborough: Burleigh) (7869) ⁴			
		vote	share
Duncan L.	Con	1,949	60.5
Oakland E.	Con	1,935	-
Sarsfield N.	Con	1,878	-
Spencer A.	Con	1,699	-
Statham W.	Lib	750	23.3
Fogg A.	Lib	728	-
Futcher R.	Lib	708	-
Marshall D.	Lib	683	-
Field C.	Lab	522	16.2
Cahill M.	Lab	522	-
Hunt M. Ms.	Lab	515	-
Burnham N.	Lab	491	-

Turnout 40.4 37.2

No. 20 (Thurmaston) (5713) ⁴			
		vote	share
Elliott M. Ms.	Con	1,170	63.3
Argyle R.	Con	1,092	-
Thomas G.	Con	1,009	-
Cockbill T.	Con	1,008	-
Littlefield W.	Lab	677	36.7
Follows C.	Lab	650	-
Rose E.	Lab	584	-
Smith K.	Lab	581	-

Turnout 37.2 26.7

No. 21 (Syston) (6836) ⁴			
		vote	share
Sharp M. Ms.	Con	1,507	64.8
Brown L.	Con	1,499	-
Simpson M. Ms.	Con	1,425	-
Branston E.	Con	1,420	-
Winfield H.	Lab	820	35.2
Roberts S.	Lab	754	-
Shaw T.	Lab	649	-
Gregory P. Ms.	Lab	591	-

Turnout 38.2 29.5

No. 23 (Queniborough) (1692)			
		vote	share
Crayford B.	Con	0	0.0

Turnout 0.0 0.0

No. 3 (Loughborough: Burton) (4331) ³			
		vote	share
Bell M. Ms.	Con	1,014	-
Gaylon I.	Con	1,014	47.6
Nicholson I.	Con	947	-
Middleton A.	Lab	814	38.2
Tormey J.	Lab	709	-
Wrigley C.	Lab	686	-
Hibbert R.	Lib	304	14.3
Jones E.	Lib	271	-

Turnout 48.2 9.4

No. 6 (Loughborough: Southfields) (3146) ²			
		vote	share
Wilson V.	Con	770	42.3
Ward D.	Con	640	-
Bennett M.	Lib	606	33.3
Hunt M.	Lab	446	24.5
O'Brien A.	Lib	444	-
Forsdick A.	Lab	424	-

Turnout 55.4 9.0

No. 7 (Loughborough: Storer) (3918) ³			
		vote	share
Deacon T.	Lab	872	48.0
Duncan A.	Lab	699	-
McKeown F.	Con	659	36.2
Davis G.	Con	634	-
Sinclair I.	Lab	627	-
Allen R.	Con	608	-
Severn R.	Lib	287	15.8
Finn J. Ms.	Lib	248	-
Yaffe R. Ms.	Lib	211	-

Turnout 45.8 11.7

No. 8 (Shepshed) (6876) ⁴			
		vote	share
Gibson G.	Lib	1,725	37.5
Bradley J.	Con	1,608	34.9
Wood B.	Lab	1,272	27.6
Hammond J.	Con	1,237	-
Page R. Ms.	Con	1,220	-
Perkins G.	Lab	1,184	-
King D.	Lib	1,160	-
Smith K.	Lab	1,104	-
Readings R.	Lib	1,084	-
Stackhouse B.	Lab	1,075	-
Hill E.	Con	1,073	-
Bock V.	Lib	1,056	-

Turnout 57.4 2.5

No. 9 (Wymeswold) (1510)			
		vote	share
Scarlett B.	Con	678	75.6
Yamanaka D. Ms.	Lib	219	24.4

Turnout 59.4 51.2

Thurcaston (1485)			
		vote	share
Chapman C.	Con	0	0.0

Turnout 0.0 0.0

Charnwood - 1979

Bradgate (5380) ³			
		vote	share
Day P.	Con	2,198	42.8
Atherton T.	Con	1,873	-
Jolley F.	Lib	1,827	35.6
Waterfall K.	Con	1,717	-
Williams H.	Lab	1,114	21.7
Schofield K.	Lab	1,014	-
McAllister C.	Lab	895	-

Turnout 80.8 7.2

East Goscote (2024)			
		vote	share
Over F.	Con	1,042	64.1
Kyle M.	Lab	583	35.9

Turnout 81.9 28.2

Loughborough Hastings (3588) ²			
		vote	share
Jones M.	Lab	2,042	72.5
Walker J.	Lab	1,646	-
Johnson J.	Con	775	27.5
Faulkner G.	Con	722	-

Turnout 78.8 45.0

Loughborough Lemyngton (3735) ³			
		vote	share
Dodd A.	Lab	1,647	62.8
Heap J.	Lab	1,635	-
Smith R.	Lab	1,433	-
Cadwallader B.	Con	975	37.2
Craig D. Ms.	Con	926	-
Jackson-Croker M.	Con	718	-
Turnout		76.4	25.6

No. 1 (Loughborough: Beaumont) (10234) ⁴			
		vote	share
Abell J.	Lab	4,200	55.6
Green D.	Lab	3,800	-
Cawsey R.	Lab	3,721	-
Page G.	Lab	3,487	-
Gibson R.	Con	3,019	40.0
Gibson W.	Con	2,985	-
Johnson A. Ms.	Con	2,797	-
Wade M.	Con	2,709	-
Morgan P.	NF	331	4.4
Turnout		79.8	15.6

No. 10 (Rearsby) (1576)			
		vote	share
Weston R.	Con	1,126	86.7
Godfrey T.	Lab	172	13.3
Turnout		83.8	73.5

No. 11 (Barrow Upon Soar) (3368) ²			
		vote	share
Barnes N.	Con	1,899	71.7
Walker C. Ms.	Con	1,523	-
Gregory M.	Lab	750	28.3
Skewes J.	Lab	567	-
Turnout		78.4	43.4

No. 12 (Quorndon) (2736) ²			
		vote	share
Shepherd R.	Con	1,570	73.4
Haberle S.	Con	1,422	-
Sheehy E.	Lab	569	26.6
Tormey P.	Lab	443	-
Turnout		81.4	46.8

No. 13 (Sileby) (5128) ³			
		vote	share
Rudkin J.	Lib	1,931	33.6
Barber G. Ms.	Con	1,792	31.2
Mason M. Ms.	Con	1,783	-
Preston W.	Ind	1,273	22.1
Knaggs D.	Lab	756	13.1
Irwin J.	Lab	707	-
Tormey J.	Lab	646	-
Turnout		78.2	2.4

No. 14 (Mountsorrel) (3082) ²			
		vote	share
Newman H.	Ind	1,393	39.4
Burton R.	Con	1,165	32.9
Allard D.	Lab	979	27.7
Haynes G.	Lab	627	-
Turnout		80.0	6.4

No. 15 (Woodhouse) (1581)			
		vote	share
Thomas G. Ms.	Con	918	73.7
Fisher A.	Lab	328	26.3
Turnout		80.6	47.4

No. 18 (Rothley) (2943) ²			
		vote	share
Byford M. Ms.	Con	1,797	80.5
Greenwood E.	Con	1,652	-
Hunt M.	Lab	435	19.5
Smith M.	Lab	384	-
Turnout		81.2	61.0

No. 19 (Birstall) (9564) ⁵			
		vote	share
Henson F. Ms.	Con	4,995	71.6
Shardlow E.	Con	4,922	-
Ward M. Ms.	Con	4,822	-
Draper C.	Con	4,508	-
Tipping G.	Con	4,506	-
Briggs I.	Lab	1,977	28.4
Cheetham A. Ms.	Lab	1,933	-
Kernan B.	Lab	1,926	-
Spooner T.	Lab	1,823	-
Warner K.	Lab	1,815	-
Turnout		83.2	43.3

No. 2 (Loughborough: Burleigh) (8173) ⁴			
		vote	share
Duncan L.	Con	3,567	52.5
Coote B.	Con	3,421	-
Sarsfield M.	Con	3,138	-
Spencer A.	Con	3,115	-
Marshall D.	Lib	1,769	26.1
Clarke C.	Lab	1,454	21.4
Fair J.	Lab	1,409	-
Sinclair I.	Lab	1,393	-
McLelland I.	Lab	1,315	-
Turnout		71.9	26.5

No. 20 (Thurmaston) (6159) ⁴			
		vote	share
Elliott M. Ms.	Con	2,427	57.3
McCombe W.	Con	2,420	-
Scargill S.	Con	2,243	-
Cockbill T.	Con	2,069	-
Culley E.	Lab	1,417	33.4
Cahill S.	Lab	1,209	-
Wilson J.	Lab	1,098	-
Gillingwater D.	Lab	1,052	-
Peters S.	NF	395	9.3
Turnout		73.4	23.8

No. 21 (Syston) (7372) ⁴			
		vote	share
Sharp M. Ms.	Con	3,020	56.5
Branston E.	Con	3,018	-
Simpson M. Ms.	Con	2,874	-
Thornton A.	Con	2,781	-
Winfield H.	Lab	2,013	37.7
Knaggs J.	Lab	1,652	-
Shaw T.	Lab	1,641	-
Travis A.	Lab	1,568	-
Peters E.	NF	308	5.8
Turnout		77.4	18.9

No. 23 (Queniborough) (1769)			
		vote	share
Brayshaw M.	Con	660	45.2
Crayfourd P.*	Ind Con	593	40.6
Green P.	Lab	208	14.2
Turnout		84.6	4.6

No. 3 (Loughborough: Burton) (4378) ³			
		vote	share
Bell M. Ms.	Con	1,780	54.7
Gaylon I.	Con	1,742	-
Nicholson I.	Con	1,607	-
Drodge S.	Lab	1,476	45.3
Shuker M.	Lab	1,330	-
Sutton F.	Lab	1,317	-
Turnout		81.3	9.3

No. 6 (Loughborough: Southfields) (3138) ²			
		vote	share
Ward D.	Con	1,137	44.5
Yaffe R.	Con	1,004	-
Fair P.	Lab	792	31.0
Hunt M.	Lab	719	-
Bennett M.	Lib	626	24.5
O'Brien A.	Lib	405	-
Turnout		79.8	13.5

No. 7 (Loughborough: Storer) (3768) ³			
		vote	share
McKeown M.	Con	1,165	41.2
Duncan A.	Lab	1,142	40.4
Simpson A.	Lab	1,066	-
Wrigley C.	Lab	1,017	-
Parke B.	Con	1,001	-
Watkins T.	Con	961	-
Finn J. Ms.	Lib	521	18.4
Thorley R.	Lib	471	-
Turnout		74.7	0.8

No. 8 (Shepshed) (8022) ⁴			
		vote	share
Bradley J.	Con	3,233	37.6
Wood B.	Lab	2,716	31.6
Page R. Ms.	Con	2,537	-
Gibson G.	Lib	2,450	28.5
Hammond J.	Con	2,391	-
Perkins B.	Lab	2,281	-
Mitchell P.	Lab	1,931	-
Simpson G.	Lab	1,870	-
Skinner C.	Con	1,845	-
Miller M.	Lib	1,420	-
Taylor J.	NF	195	2.3
Turnout		83.5	6.0

No. 9 (Wymeswold) (1547)			
		vote	share
Scarlett B.	Con	815	64.2
Elliott J.	Lib	390	30.7
Mordew G.	Lab	64	5.0
Turnout		83.0	33.5

Thurcaston (1541)			
		vote	share
Chapman C.	Con	1,100	85.1
Jones E.	Lab	193	14.9
Turnout		84.7	70.1

Charnwood - 1983

Ashby (5262) ²			
		vote	share
Brailsford K.	Lab	914	43.6
Hawkes J.	Lab	859	-
Gibbins P.	Con	679	32.4
Hooper R.	Lib/SDP	455	21.7
Marshall D.	Lib/SDP	380	-
McLoughlin M.	Comm	46	2.2
Turnout		38.2	11.2

Barrow Upon Soar Quordon (6221) ³			
		vote	share
Henman B.	Con	1,779	52.3
Shepherd R.	Con	1,614	-
Haberle S.	Con	1,436	-
Gamble M.	Ecol	540	15.9
Speed R.	Lib/SDP	469	13.8
Withers R.	Lib/SDP	412	-
Blackburn D.	Lab	377	11.1
Lauder J.	Lab	332	-
Fisher P. Ms.	Lab	263	-
Barrett R.	Conservation	235	6.9
Turnout		44.6	36.4

Birstall Goscote (1841)			
		vote	share
Boden F.	Con	596	66.0
Le Messurier-Ritchie M. Ms.	Lib/SDP	19.3	17.4
Wilson J.	Lab	133	14.7
Turnout		49.0	46.7

Birstall Greengate (2351)			
		vote	share
Draper C.	Con	690	63.1
Spooner T.	Lab	208	19.0
Preston A.	Lib/SDP	195	17.8
Turnout		46.2	44.1

Birstall Netherall (1501)			
		vote	share
Ward M. Ms.	Con	624	83.8
Kirkman M.	Lab	121	16.2
Turnout		49.6	67.5

Birstall Riverside (1688)			
		vote	share
Tipping G.	Con	450	60.6
Pateman K.	Lab	292	39.4
Turnout		44.0	21.3

Birstall Stonehill (2229)			
		vote	share
Shardlow E.	Con	444	44.8
Kingham C.	Lib/SDP	306	30.9
Baker R.	Lab	240	24.2
Turnout		44.4	13.9

Bradgate (5496)³			
		vote	share
Day P.	Con	1,291	44.2
Hurst F. Ms.	Con	1,100	-
Lowe G.	Con	945	-
Andrews B.	Lib/SDP	866	29.6
Moulds G.	Lib/SDP	476	-
Williams H.	Lab	458	15.7
Mee A.	Lib/SDP	376	-
McAllister G.	Lab	365	-
Whitebread L. Ms.	Ecol	308	10.5
Jones E. Ms.	Lab	259	-
Turnout		52.8	14.5

East Goscote (2094)			
		vote	share
Over F.	Con	615	80.4
Hardy C.	Lab	150	19.6
Turnout		36.5	60.8

Garendon (3895)²			
		vote	share
Cawsey R.	Lab	848	43.3
Greene W. Ms.	Con	709	36.2
Tyrrell J. Ms.	Con	688	-
Khatri B.	Lab	668	-
Brown M.	Lib/SDP	400	20.4
Shaw S. Ms.	Lib/SDP	393	-
Turnout		49.8	7.1

Hathern (4798)²			
		vote	share
Barnes N.	Lab	953	41.0
Church A.	Con	949	40.8
Blake J.	Con	919	-
Fisher A.	Lab	895	-
Hill M.	Lib/SDP	390	16.8
Rousham S. Ms.	Lib/SDP	346	-
Gay G.	Comm	32	1.4
Turnout		48.9	0.2

Loughborough Hastings (3831)²			
		vote	share
Jones M.	Lab	1,540	72.9
Walker J.	Lab	1,195	-
Mercer P.	Con	573	27.1
Turnout		55.4	45.8

Loughborough Lemington (3546)²			
		vote	share
Dodd A.	Lab	1,157	59.2
Smith R.	Lab	1,102	-
Craig D. Ms.	Con	531	27.2
Scott D.	Lib/SDP	266	13.6
Bennett M.	Lib/SDP	263	-
Turnout		53.3	32.0

Mountsorrel & Rothley (6026)³			
		vote	share
Byford M. Ms.	Con	1,505	39.2
Burton R.	Con	1,475	-
Greenwood E.	Con	1,216	-
Newman H.	Ind	1,108	28.9
Haines G.	Lab	728	19.0
Hemming D.	Lab	550	-
Henderson W.	Ecol	495	12.9
Shaw T.	Lab	415	-
Turnout		47.3	10.3

Nanpantan (3084)²			
		vote	share
Nicholson I.	Con	1,089	61.6
Coote B.	Con	1,080	-
Lees E. Ms.	Lib/SDP	431	24.4
Cottman G.	Lib/SDP	323	-
Simpson G.	Lab	248	14.0
Brookes C.	Lab	247	-
Turnout		57.0	37.2

Outwoods (3637)²			
		vote	share
Gaylon I.	Con	1,392	70.5
Sarsfield N.	Con	1,325	-
Paterson A. Ms.	Lib/SDP	353	17.9
Downs E.	Lib/SDP	328	-
Smith J.	Lab	229	11.6
Tormey P. Ms.	Lab	206	-
Turnout		55.7	52.6

Queniborough (2179)			
		vote	share
Brayshaw M.*	Con	825	75.4
Green P.	Lab	193	17.6
Nolan A.	Res	76	6.9
Turnout		50.2	57.8

Shepshed East (3769)²			
		vote	share
Bradley J.	Con	841	41.4
Page R. Ms.	Con	809	-
Perkins G.	Lab	772	38.0
Cave D.	Lab	688	-
Popley J.	Lib/SDP	419	20.6
Galey D.	Lib/SDP	351	-
Turnout		54.0	3.4

Shepshed West (4899)²			
		vote	share
Danvers W.	Lab	1,122	32.8
Powell J.	Lab	1,022	-
Smith P. Ms.	Con	941	27.5
Hammond J.	Ind	773	22.6
Barker L.	Lib/SDP	585	17.1
Turnout		51.4	5.3

Sibley (4734)²			
		vote	share
Barber G. Ms.	Con	732	36.0
Goldby J.	Con	709	-
Ward L.	Lib/SDP	562	27.6
Aspinall A.	Lab	450	22.1
Crick B. Ms.	Lib/SDP	443	-
Edmonds B. Ms.	Lab	344	-
Preston W.	Ind	292	14.3
Turnout		42.5	8.3

Southfields (3407)²			
		vote	share
Yaffe R. Ms.	Con	951	54.2
Spencer A.	Con	918	-
Collins A.	Lab	432	24.6
Gorst S. Ms.	Lab	377	-
Beaven A. Ms.	Lib/SDP	370	21.1
O'Brien A.	Lib/SDP	358	-
Turnout		52.7	29.6

Storer (3539)²			
		vote	share
Duncan A.	Lab	851	49.8
Shuker M.	Lab	816	-
McKeown F.	Con	614	35.9
Brook-Lawson D.	Con	445	-
Fairfield A.	Lib/SDP	243	14.2
Hardie N.	Lib/SDP	220	-
Turnout		48.7	13.9

Syston (7147)³			
		vote	share
Simpson M. Ms.	Con	1,475	47.1
Thornton A.	Con	1,415	-
Wholton R.	Con	1,274	-
Brown P.	Lib/SDP	858	27.4
Winfield H.	Lab	800	25.5
Gwilliam K. Ms.	Lib/SDP	774	-
Andrew R.	Lib/SDP	710	-
Knaggs D.	Lab	665	-
Travis A.	Lab	618	-
Turnout		43.6	19.7

The Wolds (1775)			
		vote	share
Shields R.	Con	636	58.8
Elliott J.	Lib/SDP	363	33.6
Yeo M. Ms.	Lab	82	7.6
Turnout		60.9	25.3

Thurcaston (1550)			
		vote	share
Chapman C.	Con	699	86.8
Marshall D.	Lab	106	13.2
Turnout		51.9	73.7

Thurmaston (6986)³			
		vote	share
Scargill S.	Con	0	0.0
Burton R.	Con	0	-
McCombe W.	Con	0	-
Turnout		0.0	0.0

Woodhouse & Swithland (1873)			
		vote	share
Thomas G. Ms.	Con	0	0.0
Turnout		0.0	0.0

Woodthorpe (3741)²			
		vote	share
Wrigley C.	Lab	932	51.1
Tormey J.	Lab	852	-
Kershaw A.	Con	619	33.9
Green P.	Lib/SDP	274	15.0
Gubbins E.	Lib/SDP	258	-
Turnout		47.4	17.2

Wreake Villages (1933)			
		vote	share
Weston R.	Con	854	83.8
Cox D.	Lab	165	16.2
Turnout		52.7	67.6

Charnwood - 1987

Ashby (5367)²			
		vote	share
Brailsford K.	Lab	953	43.3
Hawkes J.	Lab	867	-
Hardwick J.	Con	776	35.2
Sladdin M.	Con	722	-
Fuller J.	Lib/SDP	474	21.5
Turnout		38.4	8.0

Barrow Upon Soar Quordon (6620) ³			
		vote	share
Henman B.	Con	2,283	63.1
Shepherd R.	Con	2,150	-
McCaig P.	Con	2,082	-
Harris E.	Lib/SDP	826	22.8
Hughes J.	Lab	510	14.1
Lewis K.	Lab	496	-
Thornback J.	Lab	467	-
Turnout		48.0	40.3

Birstall Goscote (1860)			
		vote	share
Murphy E. Ms.	Con	793	77.7
Collins A.	Lab	227	22.3
Turnout		54.8	55.5

Birstall Greengate (2333)			
		vote	share
Stott A.	Lib/SDP	750	50.7
Lowe E. Ms.	Con	675	45.6
Tansey T.	Lab	55	3.7
Turnout		63.4	5.1

Birstall Netherall (1592)			
		vote	share
Ward M. Ms.	Con	684	84.8
Kirwan B. Ms.	Lab	123	15.2
Turnout		50.7	69.5

Birstall Riverside (1851)			
		vote	share
Tipping G.	Con	472	67.4
Jupp M.	Lab	228	32.6
Turnout		37.8	34.9

Birstall Stonehill (2288)			
		vote	share
Barratt R.	Lib/SDP	464	46.1
Shardlow E.	Con	387	38.4
Reed A.	Lab	156	15.5
Turnout		44.0	7.6

Bradgate (5852) ³			
		vote	share
Hurst F. Ms.	Con	1,580	51.3
Lowe G.	Con	1,292	-
Thorpe D.	Con	1,280	-
Andrews B.	Lib/SDP	966	31.3
Schofield K.	Lib/SDP	785	-
Williams H.	Lab	536	17.4
Erwin J. Ms.	Lib/SDP	506	-
Aspinall A.	Lab	397	-
Aspinall C. Ms.	Lab	397	-
Turnout		48.6	19.9

East Goscote (2194)			
		vote	share
Jenkins R.	Lib/SDP	513	51.0
Haberle S.	Con	409	40.7
Pack C. Ms.	Lab	83	8.3
Turnout		45.8	10.3

Garendon (4583) ²			
		vote	share
Greene W. Ms.	Con	1,104	45.7
Mercer P.	Con	1,022	-
Fisher A.	Lab	812	33.6
Khatri B.	Lab	682	-
Hibberd M.	Lib/SDP	500	20.7
O'Brien A.	Lib/SDP	487	-
Turnout		52.7	12.1

Hathern (5319) ²			
		vote	share
Gibson W.	Con	1,114	43.6
Church A.	Con	1,108	-
Barnes N.	Lab	907	35.5
Bates K.	Lab	895	-
Coltman W.	Lib/SDP	536	21.0
Shaw S. Ms.	Lib/SDP	495	-
Turnout		49.4	8.1

Loughborough Hastings (3810) ²			
		vote	share
Jones M.	Lab	1,402	63.6
Thurlby I. Ms.	Lab	1,028	-
Harvey J.	Con	589	26.7
Chandarana B.	Con	499	-
Hipwell B.	Lib/SDP	212	9.6
Turnout		55.0	36.9

Loughborough Lemington (3823) ²			
		vote	share
Dodd A.	Lab	1,061	54.6
Lennie J. Ms.	Lab	962	-
Barber R. Ms.	Con	638	32.8
Patel R.	Con	590	-
Gupta R.	Green	245	12.6
Turnout		48.5	21.8

Mountsorrel & Rothley (6700) ³			
		vote	share
Burton R.	Con	2,004	49.3
Greenwood E.	Con	1,806	-
Tyrrell J. Ms.	Con	1,551	-
Newman H.	Ind	977	24.0
Haines G.	Lab	580	14.3
Sibson S. Ms.	Lab	579	-
Harris P. Ms.	Lib/SDP	506	12.4
McIntyre C.	Lab	354	-
Turnout		46.5	25.3

Nanpantan (3420) ²			
		vote	share
Blake J.	Con	1,100	54.8
Coote B.	Con	1,091	-
Brown M.	Lib/SDP	719	35.8
Hill M.	Lib/SDP	686	-
Housego C. Ms.	Lab	187	9.3
Shuker M.	Lab	178	-
Turnout		61.3	19.0

Outwoods (3579) ²			
		vote	share
Gaylon I.	Con	1,351	62.9
Kershaw A.	Con	1,259	-
Hancock E. Ms.	Lib/SDP	573	26.7
Hooper R.	Lib/SDP	570	-
Overton S. Ms.	Lab	224	10.4
Smith M. Ms.	Lab	212	-
Turnout		60.5	36.2

Queniborough (2433)			
		vote	share
Brayshaw M.*	Con	1,009	81.7
Green P.	Lab	226	18.3
Turnout		50.8	63.4

Shepshed East (4691) ²			
		vote	share
Bradley J.	Con	1,128	50.1
Burr B.	Con	1,066	-
Perkins G.	Lab	914	40.6
Ferguson M.	Lab	732	-
Jacobson B.	Green	210	9.3
Turnout		47.0	9.5

Shepshed West (5037) ²			
		vote	share
Casaletto M.	Con	1,264	50.6
Danvers W.	Lab	1,236	49.4
Hammond J.	Con	1,234	-
Powell J.	Lab	1,188	-
Turnout		51.3	1.1

Sileby (5068) ²			
		vote	share
Barber G. Ms.	Con	1,277	70.3
Mason M. Ms.	Con	1,266	-
Eason G.	Lab	540	29.7
Meacock P. Ms.	Lab	518	-
Turnout		39.0	40.6

Southfields (3497) ²			
		vote	share
Yaffe R. Ms.	Con	940	52.0
Spencer A.	Con	914	-
Downs E.	Lib/SDP	449	24.8
Beaven A. Ms.	Lib/SDP	446	-
Drewry T. Ms.	Lab	419	23.2
Vincent J. Ms.	Lab	410	-
Turnout		53.9	27.2

Storer (3812) ²			
		vote	share
Duncan A.	Lab	970	52.2
Ansingh L. Ms.	Lab	953	-
Johnson J.	Con	605	32.5
Hepburn E. Ms.	Con	594	-
Lofts V. Ms.	Lib/SDP	285	15.3
Turnout		49.1	19.6

Syston (7704) ³			
		vote	share
Simpson M. Ms.	Con	1,604	46.8
Child M. Ms.	Con	1,559	-
Thornton A.	Con	1,540	-
Gwilliam K. Ms.	Lib/SDP	1,186	34.6
Nutt D.	Lib/SDP	1,158	-
Lee R.	Lib/SDP	1,157	-
Winfield H.	Lab	636	18.6
Marshall R.	Lab	451	-
Gwilliam K.	Lab	410	34.6
Turnout		44.6	12.2

The Wolds (1991)			
		vote	share
Shields R.	Con	830	76.9
Yeo M. Ms.	Lab	249	23.1
Turnout		54.2	53.8

Thurcaston (1598)			
		vote	share
Chapman C.	Con	725	85.6
Hunt M.	Lab	122	14.4
Turnout		53.0	71.2

Thurmaston (7193) ³			
		vote	share
McCombe W.	Con	1,320	43.5
Campbell S.	Con	1,197	-
Moore D.	Con	1,163	-
Pratt C.	Ind	750	24.7
Mapletoft B.	Ind	639	-
Willmott A.	Ind	570	-
Beane S.	Lib/SDP	558	18.4
Dryden J.	Lib/SDP	464	-
Choudhury R.	Lib/SDP	430	-
Hardy C.	Lab	409	13.5
Jones J.	Lab	398	-
Turnout		39.3	18.8

Woodhouse & Swithland (1887)			
		vote	share
Byford M. Ms.	Con	835	83.8
Harris C. Ms.	Lab	162	16.2
Turnout		52.8	67.5

Woodthorpe (3633) ²			
		vote	share
Pallett C.	Con	894	51.3
Hanson J. Ms.	Lab	848	48.7
Tormey J.	Lab	840	-
Goodman E. Ms.	Con	742	-
Turnout		53.2	2.6

Wreake Villages (2033)			
		vote	share
Weston R.	Con	933	87.0
Foster N.	Lab	140	13.0
Turnout		50.7	73.9

Charnwood - 1991

Ashby (5138)²

		vote	share
Brailsford K.*	Lab	763	44.9
Hawkes J.*	Lab	699	-
Carter R.	Con	395	23.3
Johnson J.	Con	376	-
Barsby B.	Green	281	16.5
Jarvis C.	LD	259	15.3
Comery-Lang B.	LD	230	-
Turnout		32.0	21.7

Barrow Upon Soar Quordon (7302)³

		vote	share
Henman B.*	Con	1,901	45.2
Shepherd R.*	Con	1,745	-
McCaig P.*	Con	1,649	-
Taylor S. Ms.	Lab	823	19.6
Milnthorpe S. Ms.	Lab	694	-
Wright F. Ms.	Green	625	14.9
Harris E.	LD	621	14.8
Harvey D.	LD	594	-
Goodhead B.	Ind	238	5.7
Turnout		45.8	25.6

Birstall Goscote (1834)

		vote	share
Murphy E. Ms.*	Con	664	66.7
Westlake P.	LD	332	33.3
Turnout		54.6	33.3

Birstall Greengate (2207)

		vote	share
Stott A.*	LD	883	59.6
Hardwick J.	Con	598	40.4
Turnout		67.4	19.2

Birstall Netherall (1513)

		vote	share
Siddons G.*	Con	528	64.3
Anthony K.	Lab	153	18.6
Jones E. Ms.	LD	140	17.1
Turnout		54.2	45.7

Birstall Riverside (1797)

		vote	share
Draycott B.	Con	423	47.5
Akroyd M. Ms.	LD	299	33.6
Bevan S. Ms.	Lab	168	18.9
Turnout		49.6	13.9

Birstall Stonehill (2184)

		vote	share
Wilson R.	LD	592	52.1
Barratt J.*	Con	370	32.6
Hall P.	Lab	115	10.1
Shardlow E.	Ind Con	59	5.2
Turnout		52.0	19.5

Bradgate (5806)³

		vote	share
Brock C. Ms.	Con	1,377	60.3
Hurst F. Ms.*	Con	1,369	-
Lowe G.*	Con	1,176	-
Williams H.	Lab	905	39.7
Clark S.	Lab	731	-
Wallace J.	Lab	716	-
Turnout		44.5	20.7

East Goscote (2222)

		vote	share
Jenkins R.*	Con	632	71.7
Martin S. Ms.	Lab	249	28.3
Turnout		39.7	43.5

Garendon (4601)²

		vote	share
Greene W. Ms.*	Con	1,056	41.7
Harris C. Ms.	Lab	1,045	41.2
Hawkes L. Ms.	Lab	1,019	-
Mercer P.*	Con	950	-
Scott D.	LD	264	10.4
O'Brien A.	LD	252	-
Sinclair I.	Green	170	6.7
Turnout		54.4	0.4

Hathern (5486)²

		vote	share
Green D. Ms.	Lab	1,007	36.5
Church A.*	Con	1,001	36.3
Gibson W.*	Con	904	-
Housego C. Ms.	Lab	866	-
Coltman S.	LD	401	14.5
Parsons D.	LD	366	-
Grey A.	Green	351	12.7
Turnout		47.6	0.2

Loughborough Hastings (4010)²

		vote	share
Jones M.*	Lab	1,656	72.8
Thurby I. Ms.*	Lab	1,223	-
Harvey J.	Con	408	17.9
Smith E. Ms.	Con	377	-
Parsons R.	Green	212	9.3
Turnout		55.2	54.8

Loughborough Lemington (3946)²

		vote	share
Dodd A.*	Lab	1,258	67.7
Lennie J. Ms.*	Lab	1,137	-
Moss G.	Con	341	18.3
Skepper E. Ms.	Con	306	-
Gupta R.	Green	260	14.0
Turnout		47.8	49.3

Mountsorrel & Rothley (7060)³

		vote	share
Burton R.*	Con	1,614	37.8
Tyrrell J. Ms.*	Con	1,554	-
Woods J.	Con	1,344	-
Newman H.	Ind	1,026	24.1
Sibson S. Ms.	Lab	875	20.5
Lewis J. Ms.	Lab	790	-
Pett H.	Lab	556	-
Elliott J.	LD	414	9.7
Wrigley V. Ms.	Green	336	7.9
Turnout		45.4	13.8

Nanpantan (3334)²

		vote	share
Barber M. Ms.	Con	970	49.9
Blake J.*	Con	885	-
Lofts V. Ms.	LD	446	23.0
Sinclair R. Ms.	Lab	384	19.8
Tyler P.	LD	360	-
Rushton A.	Lab	344	-
Knott R.	Green	143	7.4
Turnout		55.4	27.0

Outwoods (3404)²

		vote	share
Gaylon I.*	Con	1,073	52.7
Kershaw A.*	Con	1,041	-
Fairless-Price C. Ms.	LD	469	23.0
Thorpe A.	LD	354	-
Smith J.	Lab	349	17.1
Whittington R.	Lab	314	-
Busby I.	Green	144	7.1
Turnout		58.0	29.7

Queniborough (2509)

		vote	share
Brayshaw M.*	Con	834	73.1
Green P.	Lab	307	26.9
Turnout		45.8	46.2

Shepshed East (5001)²

		vote	share
Whitworth K.	Lab	1,142	52.4
Burr B.*	Con	1,036	47.6
Salter N.	Lab	997	-
Hammond J.	Con	881	-
Turnout		43.6	4.9

Shepshed West (4912)²

		vote	share
Powell J.	Lab	1,105	33.0
Danvers W.*	Ind	893	26.7
Radford C. Ms.	Con	782	23.4
Platt M.	Con	636	-
Popley J.	LD	379	11.3
Sofroniou M.	Green	188	5.6
Turnout		47.0	6.3

Sileby (5168)²

		vote	share
Mason M. Ms.*	Con	1,096	37.4
Harris J. Ms.	Con	805	-
Jones J.	Lab	743	25.4
Yarwood S. Ms.	Lab	671	-
Thompson S.	Ind Con	393	13.4
Harvey E.	LD	250	8.5
Crick B. Ms.	Ind	229	7.8
Green B. Ms.	Green	218	7.4
Turnout		47.5	12.1

Southfields (3433)²

		vote	share
Hunt M.*	Lab	975	44.7
Yaffe R. Ms.*	Con	896	41.1
Vincent J. Ms.	Lab	802	-
Nicholson I.	Con	736	-
Simpson C. Ms.	Green	178	8.2
Shaw S. Ms.	LD	130	6.0
Fuller J.	LD	121	-
Turnout		59.5	3.6

Storer (3850)²

		vote	share
Duncan A.*	Lab	960	57.4
Ansingh L. Ms.*	Lab	908	-
Hepburn E. Ms.	Con	481	28.8
Allen R.	Con	479	-
Warner S. Ms.	Green	231	13.8
Leicester P.	Green	228	-
Turnout		46.7	28.6

Syston (8462)³

		vote	share
Thornton A.*	Con	1,645	42.0
Beane S.	Con	1,547	-
Booth H.	Con	1,358	-
Yarwood E. Ms.	LD	1,209	30.9
Marshall R.	Lab	1,063	27.1
Bowes W.	Lab	710	-
Shuker M.	Lab	620	-
Turnout		38.0	11.1

The Wolds (2060)

		vote	share
Shields R.*	Con	763	74.8
Wheatley R.	Lab	257	25.2
Turnout		49.9	49.6

Thurcaston (1584)

		vote	share
Bird N.*	Con	644	83.6
Kirk C. Ms.	Lab	126	16.4
Turnout		45.7	67.3

Thurmaston (7187) ³			
		vote	share
McCombe W.*	Con	1,202	45.3
Campbell S.*	Con	1,072	-
Moore D.*	Con	989	-
Willmott A.	Ind	740	27.9
Pratt C.	Ind	731	-
Knaggs J. Ms.	Lab	711	26.8
Mapletoft B.	Ind	675	-
Gillingwater R. Ms.	Lab	643	-
Smith M. Ms.	Lab	632	-
Turnout		37.2	17.4

Woodhouse & Swithland (1850)			
		vote	share
Eykelbosch D. Ms.	Con	673	74.5
MacLeod C.	Lab	230	25.5
Turnout		50.2	49.1

Woodthorpe (3511) ²			
		vote	share
Hanson J. Ms.*	Lab	1,020	58.3
Tormey J.	Lab	973	-
Claydon D. Ms.	Con	584	33.4
Walker R.	Con	546	-
Ukairo M. Ms.	Green	147	8.4
Turnout		50.7	24.9

Wreake Villages (1990)			
		vote	share
Weston R.*	Con	798	75.1
Smith R.	Lab	265	24.9
Turnout		53.7	50.1

Charnwood - 1995

Ashby (5912) ²			
		vote	share
Brailsford K.*	Lab	1,020	78.3
Hawkes J.*	Lab	980	-
Harcourt C.	Con	283	21.7
McCracken S.	Con	258	-
Turnout		23.5	56.6

Barrow Upon Soar Quordon (7716) ³			
		vote	share
Henman B.*	Ind	1,548	38.6
Shepherd R.*	Con	1,135	28.3
McCaig P.*	Con	1,032	-
Walters J.	Con	1,011	-
Hollingsworth S. Ms.	Lab	805	20.1
Gough D.	Lab	791	-
Walls C.	Lab	726	-
Harvey D.	LD	526	13.1
Bacon R.	LD	410	-
Snowdon S. Ms.	LD	342	-
Turnout		42.8	10.3

Birstall Goscote (1827)			
		vote	share
Singleton B.	LD	510	49.5
Murphy E. Ms.*	Con	362	35.1
Hemmings T.	Lab	158	15.3
Turnout		56.3	14.4

Birstall Greengate (2124)			
		vote	share
Stott A.*	LD	687	80.1
Bowes W.	Lab	171	19.9
Turnout		41.0	60.1

Birstall Netherall (1507)			
		vote	share
Grundy K. Ms.	Con	380	46.6
Kelham R. Ms.*	LD	364	44.7
Vincent R.	Lab	71	8.7
Turnout		54.1	2.0

Birstall Riverside (1692)			
		vote	share
Akroyd M. Ms.*	LD	441	60.8
Williams H.	Lab	147	20.3
Popple B.	Con	137	18.9
Turnout		42.9	40.6

Birstall Stonehill (2122)			
		vote	share
Wilson R.*	LD	440	57.7
Elliott-Fenton S.	Lab	166	21.8
Marks M.	Con	156	20.5
Turnout		36.0	36.0

Bradgate (5627) ³			
		vote	share
Brock C. Ms.*	Con	1,107	43.8
Hurst F. Ms.*	Con	968	-
Moulds G.	LD	808	32.0
Bryant J.	LD	672	-
Braithwaite A. Ms.	Lab	610	24.2
Housego C. Ms.	Lab	523	-
Shuker M.	Lab	476	-
Turnout		38.7	11.8

East Goscote (2139)			
		vote	share
Jenkins R.*	Con	388	60.8
Spooner G. Ms.	Lab	250	39.2
Turnout		29.8	21.6

Garendon (4885) ²			
		vote	share
Hunt M.	Lab	1,406	68.6
Harris C. Ms.*	Lab	1,397	-
Johnson A. Ms.	Con	440	21.5
Lewis P.	Con	428	-
Scott D.	LD	205	10.0
Newton M.	LD	199	-
Turnout		44.1	47.1

Hathern (5425) ²			
		vote	share
Green D. Ms.*	Lab	1,246	63.2
Muldoon W.	Lab	1,133	-
Hardwick J.	Con	441	22.4
Walker F. Ms.	Con	390	-
Coltman S.	LD	283	14.4
Higgins D. Ms.	LD	273	-
Turnout		37.9	40.9

Loughborough Hastings (4015) ²			
		vote	share
Jones M.*	Lab	1,639	80.6
Thurlyby I. Ms.*	Lab	1,274	-
Harvey J.	Con	239	11.8
Oakley R. Ms.	Con	189	-
Shaw S. Ms.	LD	155	7.6
Ali M.	LD	148	-
Turnout		50.9	68.9

Loughborough Lemyngton (3981) ²			
		vote	share
Dodd A.*	Lab	1,270	72.6
Tormey J.	Lab	920	-
Allen R.	Con	181	10.3
Jarvis C.	LD	156	8.9
Gupta R.	Green	142	8.1
Chowdhury S.	LD	142	-
Naginton F.	Con	138	-
Leicester P.	Green	119	-
Turnout		42.1	62.3

Mountsorrel & Rothley (7375) ³			
		vote	share
Sibson S. Ms.	Lab	1,231	42.6
Moore J.	Con	1,146	39.7
Tyrrell J. Ms.*	Con	1,134	-
Cowles M. Ms.	Lab	1,121	-
Wilson R.	Lab	1,071	-
Brown T.	Con	1,064	-
Foster D.	LD	511	17.7
Stott E. Ms.	LD	447	-
Mayes M.	LD	438	-
Turnout		40.3	2.9

Nanpantan (3317) ²			
		vote	share
Barber M. Ms.*	Con	782	47.3
Jervis A.	Con	689	-
Anthony K.	Lab	589	35.7
Rushton A.	Lab	551	-
Lofts V. Ms.	LD	281	17.0
Tyler P.	LD	281	-
Turnout		50.4	11.7

Outwoods (3737) ²			
		vote	share
Kershaw A.*	Con	856	44.8
Harris G.	Lab	738	38.7
Yaffe R. Ms.	Con	708	-
Smith J.	Lab	666	-
Thorpe A.	LD	315	16.5
Turnout		47.4	6.2

Queniborough (2414)			
		vote	share
Brayshaw M.*	Con	634	64.5
Allen T.	Lab	349	35.5
Turnout		41.9	29.0

Shepshed East (5073) ²			
		vote	share
Perkins G.	Lab	1,279	62.3
White J.	Lab	1,101	-
Burr B.*	Con	524	25.5
Hopkins N.	Con	446	-
George J.	LD	251	12.2
Turnout		38.0	36.8

Shepshed West (4963) ²			
		vote	share
Powell J.*	Lab	1,249	61.5
Newton M. Ms.	Lab	1,198	-
Radford C. Ms.	Con	509	25.0
Stinchcombe C.	Con	379	-
Popley J.	LD	274	13.5
Lycett G.	LD	192	-
Turnout		41.6	36.4

Sileby (5184) ²			
		vote	share
Reed A.	Lab	1,202	66.5
Trasler R. Ms.	Lab	1,133	-
Mason M. Ms.*	Con	605	33.5
Harris J. Ms.*	Con	552	-
Turnout		37.3	33.0

Southfields (3560) ²			
		vote	share
Vincent J. Ms.	Lab	850	53.2
MacLeod C.	Lab	821	-
Jeffery M.	Con	443	27.7
Roberts A. Ms.	Con	438	-
Brass D. Ms.	LD	220	13.8
O'Brien A.	LD	160	-
Ward A. Ms.	Green	84	5.3
Turnout		44.8	25.5

Storer (4299)²			
		vote	share
Duncan A.*	Lab	1,056	73.4
Hawkes L. Ms.	Lab	994	-
Harrison F.	Con	266	18.5
Parker L. Ms.	Con	215	-
Snow P.	Green	116	8.1
Warner S. Ms.	Green	106	-
Turnout		36.0	54.9

Syston (8830)³			
		vote	share
Marshall R.	Lab	1,438	55.0
Bark H. Ms.	Lab	1,361	-
Lovell C.	Lab	1,306	-
Thornton A.*	Con	1,177	45.0
Carnall K.	Con	946	-
Beane S.*	Con	910	-
Turnout		32.5	10.0

The Wolds (2164)			
		vote	share
Shields R.*	Con	406	39.5
Griggs B.	LD	325	31.6
Taylor S. Ms.	Lab	248	24.1
Pickavant W.	Ind	48	4.7
Turnout		47.5	7.9

Thurcaston (1626)			
		vote	share
Bird N.*	Con	580	78.7
Flavell E.	Lab	157	21.3
Turnout		45.6	57.4

Thurmaston (6968)³			
		vote	share
Knaggs D.	Lab	1,256	52.8
Knaggs J. Ms.	Lab	1,200	-
Rose S.	Lab	1,132	-
McCombe W.*	Con	783	32.9
Campbell S.*	Con	715	-
Moore D.*	Con	596	-
Willmott A.	Ind	342	14.4
Turnout		32.2	19.9

Woodhouse & Swithland (1884)			
		vote	share
Greene W. Ms.	Ind	377	43.4
Christie D. Ms.*	Con	288	33.1
Hollingsworth P.	Lab	204	23.5
Turnout		46.3	10.2

Woodthorpe (3557)²			
		vote	share
Tampion A. Ms.	Lab	887	75.1
Yardley T.	Lab	848	-
Barber R. Ms.	Con	294	24.9
Turnout		36.6	50.2

Wreake Villages (2054)			
		vote	share
Bush J.	Con	597	60.2
Smith R.	Lab	394	39.8
Turnout		48.7	20.5

Charnwood - 1999

Ashby (5990)²			
		vote	share
Green D. Ms.*	Lab	490	70.6
Hawkes J.*	Lab	478	-
Fuller J.	LD	204	29.4
Comery-Lang B.	LD	181	-
Turnout		12.7	41.2

Barrow Upon Soar Quordon (8033)³			
		vote	share
Foster J.	Con	1,394	52.4
Shepard R.*	Con	1,379	-
McCaug P.*	Con	1,268	-
Harrington A. Ms.	Lab	763	28.7
Timmons G.	Lab	734	-
Kitterick P.	Lab	573	-
Gilbert M.	LD	503	18.9
Harvey D.	LD	372	-
Brass D. Ms.	LD	301	-
Turnout		31.9	23.7

Birstall Goscote (1826)			
		vote	share
Singleton B.*	LD	470	59.3
Crayford B.	Con	221	27.9
Kerry G. Ms.	Lab	102	12.9
Turnout		43.5	31.4

Birstall Greengate (2100)			
		vote	share
Stull A.*	LD	497	59.2
Wright C.	Con	233	27.7
Wring D.	Lab	110	13.1
Turnout		40.1	31.4

Birstall Netherall (1516)			
		vote	share
Stott E. Ms.	LD	352	53.4
Manuel J. Ms.	Con	229	34.7
Hemmings T.	Lab	78	11.8
Turnout		43.5	18.7

Birstall Riverside (1641)			
		vote	share
Akroyd M. Ms.*	LD	409	75.9
Vincent C. Ms.	Lab	130	24.1
Turnout		33.2	51.8

Birstall Stonehill (2083)			
		vote	share
Wilson R.*	LD	388	61.8
Holland R.	Con	124	19.7
Forrest C. Ms.	Lab	116	18.5
Turnout		30.2	42.0

Bradgate (5544)³			
		vote	share
Brock C. Ms.*	Con	1,096	51.2
Hurst F. Ms.*	Con	1,053	-
Sutherland J.	LD	752	35.1
Osbourne P.	Con	698	-
Bryant J.	LD	485	-
Moulds G.*	LD	479	-
Housego C. Ms.	Lab	294	13.7
Shuker M.	Lab	269	-
Watts S.	Lab	250	-
Turnout		35.3	16.1

East Goscote (2122)			
		vote	share
Jenkins R.*	Con	405	63.1
Knaggs J. Ms.*	Lab	237	36.9
Turnout		30.4	26.2

Garendon (5097)²			
		vote	share
Hunt M.*	Lab	889	54.7
Dodd A.*	Lab	884	-
Barber R. Ms.	Con	474	29.2
Scott D.	LD	262	16.1
Shaw S. Ms.	LD	255	-
Turnout		31.2	25.5

Hathern (5594)²			
		vote	share
Anthony K.	Lab	911	54.1
Ansingh L. Ms.	Lab	893	-
King P.	Con	547	32.5
Marvell A.	Con	477	-
Higgins D. Ms.	LD	227	13.5
Coltman S.	LD	217	-
Turnout		30.3	21.6

Loughborough Hastings (3947)²			
		vote	share
Thurlby I. Ms.*	Lab	0	0.0
Jones M.*	Lab	0	-
Turnout		0.0	0.0

Loughborough Lemington (4044)²			
		vote	share
Tormey J.*	Lab	756	79.5
Muldoon W.	Lab	736	-
Chowdhury S.	Ind	195	20.5
Turnout		25.4	59.0

Mountsorrel & Rothley (8425)³			
		vote	share
Duffin T.	Con	1,342	52.1
Moore J.*	Con	1,265	-
Page M.	Con	1,171	-
Cowles M. Ms.	Lab	920	35.7
Nicholson S.	Lab	893	-
Wilkinson M.	LD	313	12.2
Smith B.	LD	264	-
Akroyd P.	LD	219	-
Turnout		31.0	16.4

Nanpantan (3232)²			
		vote	share
Barber M. Ms.*	Con	861	58.0
Lewis P.	Con	769	-
Brailsford K.*	Lab	424	28.6
Evans G.	Lab	389	-
Tyler P.	LD	199	13.4
Lofts V. Ms.	LD	183	-
Turnout		45.1	29.4

Outwoods (4257)²			
		vote	share
Allen M. Ms.	Con	1,001	56.7
Kershaw A.*	Con	994	-
Smith J.	Lab	531	30.1
Walls C.	Lab	488	-
Jarvis C.	LD	232	13.2
Thorpe A.	LD	222	-
Turnout		41.9	26.6

Queniborough (2388)			
		vote	share
Preston M.	Con	569	70.6
Knaggs D.*	Lab	237	29.4
Turnout		34.1	41.2

Shepshed East (5154)²			
		vote	share
Perkins G.*	Lab	834	55.6
White J.*	Lab	783	-
Bebington E. Ms.	Con	490	32.7
Whittaker S.	Con	408	-
Nasmyth J.	LD	176	11.7
Turnout		27.6	22.9

Shepshed West (4922)²			
		vote	share
Powell J.*	Lab	812	50.0
Newton M. Ms.*	Lab	757	-
Burr B.	Con	570	35.1
Radford C. Ms.	Con	555	-
Popley J.	LD	241	14.8
Turnout		31.4	14.9

Sibley (5246)²			
		vote	share
French A.*	Lab	766	51.2
Trasler R. Ms.*	Lab	688	-
Harris R. Ms.	Con	580	38.8
Breen D.	Con	547	-
Singleton J. Ms.	LD	149	10.0
Turnout		27.7	12.4

Southfields (3632)²			
		vote	share
Vincent J. Ms.*	Lab	661	52.5
Macleod C.*	Lab	642	-
Johnson A. Ms.	Con	459	36.5
Johnson D.	Con	458	-
Jackson R. Ms.	LD	139	11.0
O' Brien A.	LD	114	-
Turnout		34.9	16.0

Storer (4520)²			
		vote	share
Hawkes L. Ms.*	Lab	706	68.9
Forrest S. Ms.	Lab	664	-
Harrison F.	Con	319	31.1
Turnout		22.9	37.8

Syston (9003)³			
		vote	share
Noon A.	Con	1,151	45.3
Houseman D.	Con	1,116	-
Pacey K.	Con	1,074	-
Bark H. Ms.*	Lab	921	36.3
Marshall R.*	Lab	901	-
Lovell C.*	Lab	833	-
Henry F. Ms.	LD	467	18.4
Turnout		26.8	9.1

The Wolds (2224)			
		vote	share
Sheilds R.*	Con	507	46.5
Griggs B.	LD	388	35.6
Smith T.	Lab	196	18.0
Turnout		49.2	10.9

Thurcaston (1693)			
		vote	share
Bird N.*	Con	504	77.1
Mitchell S. Ms.	Lab	150	22.9
Turnout		38.7	54.1

Thurmaston (7003)³			
		vote	share
Brown S.	Lab	1,007	47.1
Bark G.	Lab	898	-
Campbell S.	Con	872	40.8
Moore D.	Con	857	-
Bava A.	Lab	848	-
Rushin W.	Con	774	-
Willmott A.	Ind	258	12.1
Turnout		29.1	6.3

Woodhouse & Swithland (1856)			
		vote	share
Greene W. Ms.*	Ind	528	64.0
Marks M.	Con	160	19.4
Stevenson H.	Lab	137	16.6
Turnout		44.7	44.6

Woodthorpe (3852)²			
		vote	share
Yardley T.*	Lab	556	60.6
Gay G.	Lab	550	-
Allen R.	Con	361	39.4
Marvell H.	Con	322	-
Turnout		25.5	21.3

Wreake Villages (2138)			
		vote	share
Bush J.*	Con	712	73.6
Smith M. Ms.	Lab	255	26.4
Turnout		45.8	47.3

Charnwood - 2003

Anstey (4620)²			
		vote	share
Sutherland J.*	LD	962	57.8
Bryant J.	LD	659	-
Hurst F. Ms.*	Con	571	34.3
Cole P. Ms.	Con	372	-
Watts S.	Lab	130	7.8
Turnout		31.2	23.5

Barrow & Sibley West (4514)²			
		vote	share
Fryer H. Ms.	Con	774	51.0
Rodger E.	Lab	745	49.0
Richards S.	Lab	740	-
Ranson P. Ms.	Con	700	-
Turnout		35.6	1.9

Birstall Wanlip (4099)²			
		vote	share
Edwards H. Ms.	LD	716	44.4
Bentley I.	Con	708	43.9
Singleton B.*	LD	653	-
Wright C.	Con	562	-
Barker D. Ms.	Lab	189	11.7
Hall M. Ms.	Lab	161	-
Turnout		38.5	0.5

Birstall Watermead (5221)²			
		vote	share
Wilson R.*	LD	847	52.5
Ackroyd M. Ms.*	LD	743	-
Sher S. Ms.	Con	542	33.6
Gerrard S. Ms.	Con	539	-
McNeil D.	Lab	224	13.9
Forrest C. Ms.	Lab	207	-
Turnout		31.8	18.9

East Goscote (2245)			
		vote	share
Jenkins R.*	Con	383	73.7
Coldicott C. Ms.	Lab	137	26.3
Turnout		23.3	47.3

Forest Bradgate (2522)			
		vote	share
Snartt E.	Con	811	78.7
Stevenson H.	Lab	220	21.3
Turnout		41.7	57.3

Loughborough Ashby (4813)²			
		vote	share
Green D. Ms.*	Lab	0	-
Hubbard S. Ms.	Lab	0	0.0
Turnout		0.0	0.0

Loughborough Dishley & Hathern (4400)²			
		vote	share
Williams S. Ms.	Lab	808	66.4
Anthony K.*	Lab	627	-
Roberts C.	UK Ind	408	33.6
Turnout		27.9	32.9

Loughborough Garendon (4749)²			
		vote	share
Hunt M.*	Lab	958	64.1
Flavell E.	Lab	870	-
Gregory C.	Con	537	35.9
Turnout		31.5	28.2

Loughborough Hastings (4267)²			
		vote	share
Jones M.*	Lab	836	58.0
Bava A.	Lab	693	-
Thorpe A.	LD	333	23.1
Tyrrell J. Ms.	Con	272	18.9
Turnout		29.5	34.9

Loughborough Lemyngton (4121)²			
		vote	share
Muldoon W.*	Lab	590	59.7
Tormey J.*	Lab	554	-
Allen R.	Con	227	23.0
Stowell D.	UK Ind	171	17.3
Turnout		23.2	36.7

Loughborough Nanpantan (4580)²			
		vote	share
Lewis P.*	Con	686	49.2
Hunt J. Ms.	Con	650	-
Coleman S.	LD	364	26.1
Evans G.	Lab	345	24.7
Legge K. Ms.	Lab	331	-
Turnout		28.2	23.1

Loughborough Outwoods (4483)²			
		vote	share
Allen M. Ms.*	Con	826	47.5
Kershaw A.*	Con	777	-
Danby G. Ms.	Lab	411	23.6
Knight S.	Lab	397	-
Coltman S.	LD	260	15.0
Shaw S. Ms.	LD	253	-
Burton R.	UK Ind	242	13.9
Turnout		36.8	23.9

Loughborough Shelthorpe (4347)²			
		vote	share
Gay G.*	Lab	508	55.7
Yardley T.*	Lab	501	-
Jukes R.	Con	404	44.3
Marvell H. Ms.	Con	386	-
Turnout		23.1	11.4

Loughborough Southfields (4934)²			
		vote	share
Vincent J. Ms.*	Lab	683	47.8
Macleod C.*	Lab	626	-
Johnson J.	Con	447	31.3
Manuel J. Ms.	Con	355	-
Zenthon A.	LD	300	21.0
Turnout		26.6	16.5

Loughborough Storer (4956)²			
		vote	share
Harris C. Ms.	Lab	474	61.6
Forrest S. Ms.*	Lab	456	-
Tyler P.	LD	296	38.4
Webber-Jones R.	LD	277	-
Turnout		16.0	23.1

Mountsorrel (5056)²			
		vote	share
Duffin T.*	Con	849	63.6
Taylor C.	Con	744	-
Coates J.	Lab	485	36.4
Cowles M. Ms.	Lab	446	-
Turnout		25.8	27.3

Queniborough (2414)			
		vote	share
Preston M.*	Con	649	77.9
Bark T.	Lab	184	22.1
Turnout		34.4	55.8

Quorn & Mountsorrel Castle (4921)²			
		vote	share
Shepherd R.*	Con	1,076	57.4
Slater D.*	Con	1,021	-
Harrington A. Ms.	Lab	501	26.7
Valentine-Gale L. Ms.	Lab	353	-
Gilbert M.	LD	296	15.8
Turnout		35.6	30.7

Rothley & Thurgate (4829)²

		vote	share
Page M.*	Con	913	44.2
Moore J.*	Con	782	-
Bye J.	UK Ind	362	17.5
Cowles T.	Lab	319	15.5
Hunt S. Ms.	Lab	277	-
Smith B.	LD	276	13.4
Kingham A. Ms.	Green	194	9.4
Turnout		34.6	26.7

Shepshed East (5115)²

		vote	share
Blanchard C.	Lab	549	42.4
Feeney R.	Lab	501	-
Bebbington E. Ms.	Con	466	36.0
Hanson I.	Con	394	-
Nasmyth J.	LD	279	21.6
Turnout		22.5	6.4

Shepshed West (5178)²

		vote	share
Kershaw R.	Lab	601	44.6
Newton M. Ms.*	Lab	600	-
Radford C. Ms.	Con	507	37.6
Nagington F.	Con	422	-
Popley J.	LD	239	17.7
Lycett G.	LD	179	-
Turnout		25.5	7.0

Sileby (5126)²

		vote	share
Brown T.*	Con	796	50.7
Jones K.	Con	741	-
Lockwood L. Ms.	Lab	485	30.9
Stork N.	Lab	399	-
Sherratt B.	UK Ind	153	9.7
Singleton J. Ms.	LD	137	8.7
Turnout		29.7	19.8

Syston East (4566)²

		vote	share
Pacey K.*	Con	668	51.7
Hampson S.	Con	650	-
Bark G.*	Lab	390	30.2
Spibey I.	Lab	384	-
Henry F. Ms.	LD	234	18.1
Turnout		27.5	21.5

Syston West (4548)²

		vote	share
Houseman D.*	Con	606	54.4
Noon A.*	Con	526	-
Bark S. Ms.	Lab	376	33.8
Yates K. Ms.	Lab	345	-
Roseblade K.	UK Ind	132	11.8
Turnout		24.0	20.6

The Wolds (2256)

		vote	share
Sharpe I.	LD	429	39.3
Shields R.*	Con	367	33.6
Hammond J.	Ind	192	17.6
Smith M. Ms.	Lab	104	9.5
Turnout		48.5	5.7

Thurmaston (7069)³

		vote	share
Campbell S.*	Con	838	42.7
Cowle A.	Lab	803	40.9
Harley P.	Con	781	-
Knaggs J. Ms.	Lab	769	-
Moore D.	Con	748	-
Singh R.	Lab	731	-
Gurney S.	Ind	321	16.4
Rumsby S.	Ind	259	-
Wilmott A.	Ind	249	-
Turnout		27.6	1.8

Wreake Villages (2252)

		vote	share
Bush J.*	Con	636	75.1
Hawkes J.*	Lab	211	24.9
Turnout		38.0	50.2

Charnwood - 2007
Anstey (4815)²

		vote	share
Day J.	Con	934	41.7
Sutherland J.*	LD	883	39.4
Sugden J.	Con	737	-
Bryant J.*	LD	644	-
Taylor J.	BNP	422	18.8
Turnout		41.2	2.3

Barrow & Sileby West (4635)²

		vote	share
Fryer H. Ms.*	Con	1,088	53.6
Ranson P. Ms.	Con	1,013	-
Rodgers E.*	Lab	703	34.7
Forrest S. Ms.*	Lab	632	-
Thorpe A.	LD	237	11.7
Turnout		41.8	19.0

Birstall Wanlip (4077)²

		vote	share
Edwards H. Ms.*	LD	875	44.9
Jones S.	Con	822	42.2
Bentley I.*	Con	779	-
Singleton B.	LD	774	-
Hatton-Cornworth R.	BNP	250	12.8
Turnout		47.2	2.7

Birstall Watermead (5219)²

		vote	share
Wilson R.*	LD	1,142	55.2
Astill R.	Con	928	44.8
Collingswood P.	LD	815	-
Shergill S. Ms.	Con	777	-
Turnout		39.7	10.3

East Goscote (2235)

		vote	share
Duffy C. Ms.	BNP	324	37.0
Gregory K.	Con	316	36.1
Smith Y. Ms.	Ind	236	26.9
Turnout		39.5	0.9

Forest Bradgate (2632)

		vote	share
Snartt E.*	Con	1,019	84.4
Stevenson H.	Lab	189	15.6
Turnout		46.3	68.7

Loughborough Ashby (4653)²

		vote	share
Goss D.	Con	546	42.6
Green D. Ms.*	Lab	517	40.3
Gough S. Ms.*	Lab	472	-
Holders A.	BNP	220	17.1
Turnout		24.4	2.3

Loughborough Dishley & Hathern (4511)²

		vote	share
Williams S. Ms.*	Lab	926	44.7
Hodgson S.	Con	804	38.8
Hogan I. Ms.	Lab	803	-
Shields R.	Con	687	-
Sinnett C.	BNP	341	16.5
Turnout		42.9	5.9

Loughborough Garendon (4661)²

		vote	share
Hunt M.*	Lab	845	36.4
Campsall R.	Ind	834	35.9
Flavell E.*	Lab	743	-
Smith L.	Con	644	27.7
Shaw M.	Ind	625	-
Turnout		43.8	0.5

Loughborough Hastings (4246)²

		vote	share
Legge K. Ms.	Lab	799	60.2
Bava A.*	Lab	769	-
Morgan J.	Con	529	39.8
Hampson S. Ms.	Con	507	-
Turnout		33.9	20.3

Loughborough Lemington (4516)²

		vote	share
Tormey J.*	Lab	707	46.5
Miah J.	Lab	692	-
Sargeant J.	LD	313	20.6
Shahid M.	LD	290	-
Allen R.	Con	260	17.1
Smith E. Ms.	Con	245	-
Muldoon W.*	Respect	239	15.7
Turnout		28.2	25.9

Loughborough Nanpantan (4607)²

		vote	share
Hunt J. Ms.*	Con	857	55.4
Lewis P.*	Con	852	-
Tyler P.	LD	381	24.6
Coltman S.	LD	325	-
Danby G. Ms.	Lab	309	20.0
Knight S.	Lab	282	-
Turnout		33.5	30.8

Loughborough Outwoods (4602)²

		vote	share
Walker D.	LD	1,061	50.5
Jukes R.	Con	1,039	49.5
Allen M. Ms.*	Con	1,030	-
Scott D.	LD	995	-
Turnout		46.6	1.0

Loughborough Shelthorpe (5001)²

		vote	share
Gay G.*	Lab	870	43.9
Stork N.*	Lab	850	-
Poland J.	Con	596	30.1
Rowe H.	Con	561	-
Holders A.	BNP	517	26.1
Stafford K.	BNP	485	-
Turnout		40.9	13.8

Loughborough Southfields (5537)²

		vote	share
Vincent J. Ms.*	Lab	628	41.9
Smith G.	Lab	577	-
Shields J. Ms.	Con	490	32.7
Bokor S.	Con	458	-
Youell G. Ms.	LD	380	25.4
Zenthon A.	LD	294	-
Turnout		26.1	9.2

Loughborough Storer (4848)²

		vote	share
Harris C. Ms.*	Lab	567	58.2
Youell P.	Lab	479	-
Lee J.	Con	408	41.8
Turnout		19.5	16.3

Mountsorrel (5184)²

		vote	share
Capleton J.	Con	1,029	53.5
Harper-Davies L. Ms.	Con	989	-
Coats J.	Lab	474	24.6
Canham C.	BNP	422	21.9
Sapsford S. Ms.	Lab	367	-
Turnout		35.4	28.8

Queniborough (2500)

		vote	share
Preston M.*	Con	860	82.4
Watts S.	Lab	184	17.6
Turnout		42.1	64.8

Quorn & Mountsorrel Castle (5016) ²			
		vote	share
Shepherd R.*	Con	1,547	75.6
Slater D.*	Con	1,451	-
Coxon M.	Lab	498	24.4
Forrest C. Ms.	Lab	452	-
Turnout		41.1	51.3

Rothley & Thurgate (4867) ²			
		vote	share
Osborne P.	Con	1,422	60.3
Wise D. Ms.	Con	1,239	-
Collett C. Ms.	BNP	372	15.8
Cowles T.*	Lab	303	12.8
Bye J.	UKIP	263	11.1
McAllister G.	Lab	237	-
Storier M.	UKIP	134	-
Turnout		44.6	44.5

Shepshed East (5225) ²			
		vote	share
Bebbington D.	Con	705	31.6
Popley C. Ms.	LD	570	25.6
Horn D. Ms.	LD	556	-
Parker K.	Lab	513	23.0
White S.	Lab	510	-
Thomson E.	BNP	442	19.8
Turnout		37.8	6.1

Shepshed West (5415) ²			
		vote	share
Burr B.	Con	722	30.0
Radford C. Ms.	Con	677	-
Newton M. Ms.*	Lab	626	26.0
Lennie J. Ms.	Lab	560	-
Green J. Ms.	BNP	540	22.4
Popley J.	LD	522	21.7
Kershaw R.*	LD	411	-
Turnout		40.6	4.0

Sileby (5512) ²			
		vote	share
Brown R.*	Con	1,352	74.1
Jones K.*	Con	1,302	-
Mear F.	Lab	473	25.9
Goodyer E.	Lab	401	-
Turnout		33.6	48.2

Syston East (4661) ²			
		vote	share
Pacey K.*	Con	912	50.0
Hampson S.*	Con	881	-
Denham S.	BNP	547	30.0
Bark S. Ms.	Lab	365	20.0
Bark S. Ms.	Lab	351	20.0
Turnout		37.8	20.0

Syston West (4759) ²			
		vote	share
Barkley T.	Con	747	46.9
Noon A.*	Con	742	-
Spibey I.	Lab	498	31.3
Bark H. Ms.	Lab	496	-
Neal J. Ms.	BNP	348	21.8
Turnout		35.1	15.6

The Wolds (2371)			
		vote	share
Bokor J. Ms.	Con	686	55.7
Sharpe I.*	LD	546	44.3
Turnout		52.1	11.4

Thurmaston (7195) ³			
		vote	share
Harley P.*	Con	1,363	46.2
Campbell S.*	Con	1,288	-
Seaton B. Ms.	Con	1,283	-
Brown S.	Lab	873	29.6
Aujja J.	Lab	735	-
Bark G.	Lab	728	-
Newman P.	BNP	713	24.2
Turnout		37.9	16.6

Wreake Villages (2267)			
		vote	share
Bush J.*	Con	890	84.0
Adams G. Ms.	Lab	169	16.0
Turnout		46.9	68.1

Charnwood - 2011

Anstey (5223) ²			
		vote	share
Sutherland J.*	LD	1,087	38.7
Day P.*	Con	989	35.2
Witts S. Ms.	Con	631	-
McAllister G.	Lab	518	18.4
Bolton J.	Lab	335	-
Taylor J.	BNP	215	7.7
Turnout		41.9	3.5

Barrow & Sileby West (5149) ²			
		vote	share
Fryer H. Ms.*	Con	1,394	62.0
Ranson P. Ms.*	Con	1,224	-
Willcocks A.	Lab	855	38.0
Perry I.	Lab	696	-
Turnout		44.8	24.0

Birstall Wanlip (4596) ²			
		vote	share
Jones S.*	Con	1,102	47.7
Shergill S. Ms.	Con	830	-
Cowles M. Ms.	Lab	642	27.8
Edwards H. Ms.*	LD	564	24.4
Bava A.*	Lab	461	-
Turnout		46.6	19.9

Birstall Watermead (5303) ²			
		vote	share
Gaskell D.	Con	1,060	48.4
Bentley I.	Con	976	-
Hopkins R. Ms.	Lab	696	31.8
Sapsford S. Ms.	Lab	630	-
Miller R.	LD	433	19.8
Turnout		42.5	16.6

East Goscote (2230)			
		vote	share
Duffy C. Ms.*	BNP	401	42.3
Smith Y. Ms.	Con	396	41.8
McLoughlin G. Ms.	Lab	150	15.8
Turnout		43.2	0.5

Forest Bradgate (2701)			
		vote	share
Snartt D.*	Con	1,043	78.1
Stevenson H.	Lab	292	21.9
Turnout		50.0	56.3

Loughborough Ashby (5517) ²			
		vote	share
Carter C.	Lab	834	62.2
Bradshaw J. Ms.	Lab	817	-
Goss D.*	Con	506	37.8
Seaton L. Ms.	Con	404	-
Turnout		25.1	24.5

Loughborough Dishley & Hathern (4934) ²			
		vote	share
Newton M. Ms.	Lab	1,270	58.4
Smith S.	Lab	1,131	-
Hodgson S.*	Con	906	41.6
Poland J.	Con	850	-
Turnout		46.0	16.7

Loughborough Garendon (4688) ²			
		vote	share
Hunt M.*	Lab	1,150	41.0
Campsall R.*	Ind	879	31.3
Bassford J.	Con	778	27.7
Parmar H.	Lab	710	-
Turnout		49.2	9.7

Loughborough Hastings (4617) ²			
		vote	share
Williams A. Ms.	Lab	1,163	65.5
Choudhury J.	Lab	1,104	-
Spence J. Ms.	Con	612	34.5
Shahid M.	Con	492	-
Turnout		41.9	31.0

Loughborough Lemington (4881) ²			
		vote	share
Harris C. Ms.*	Lab	1,200	66.7
Miah J. Ms.*	Lab	1,106	-
Chowdhury M.	Con	406	22.6
Miah S.	Con	389	-
Willis M.	LD	193	10.7
Turnout		37.7	44.1

Loughborough Nanpantan (4560) ²			
		vote	share
Hunt J. Ms.*	Con	890	49.2
Smidowicz J. Ms.	Con	826	-
Cahill M.	Lab	713	39.4
Sinclair R. Ms.	Lab	610	-
Coltman S.	LD	207	11.4
Thorpe A.	LD	200	-
Turnout		40.9	9.8

Loughborough Outwoods (4656) ²			
		vote	share
Jukes R.*	Con	1,388	52.8
Morgan J.	Con	1,291	-
Fay F.	Lab	744	28.3
Clarke A.	Lab	720	-
Walker D.*	LD	498	18.9
Scott D.	LD	312	-
Turnout		53.7	24.5

Loughborough Shelthorpe (5291) ²			
		vote	share
Sharp W.	Lab	1,078	55.3
Stork N.*	Lab	998	-
Parsons G.	Con	870	44.7
Watkinson M. Ms.	Con	832	-
Turnout		40.4	10.7

Loughborough Southfields (5928) ²			
		vote	share
Smith G.*	Lab	918	46.8
Smith M. Ms.	Lab	910	-
Parton T.	Con	766	39.0
Asmal M.	Con	596	-
Brass D. Ms.	LD	279	14.2
Zenthon A.	LD	189	-
Turnout		33.4	7.7

Loughborough Storer (5001) ²			
		vote	share
Forrest S. Ms.	Lab	797	62.7
Youell P.*	Lab	733	-
Bradshaw S.	Con	475	37.3
Shahid A. Ms.	Con	396	-
Turnout		29.8	25.3

Mountsorrel (5372) ²			
		vote	share
Capleton J.*	Con	1,178	57.6
Harper-Davies L.*	Con	1,086	-
Coats S.	Lab	604	29.5
Winrow H. Ms.	Lab	553	-
Storier M.	UKIP	263	12.9
Turnout		39.7	28.1

Queniborough (2534)			
		vote	share
Grimley D.	Con	948	78.5
McLoughlin M.	Lab	260	21.5
Turnout		48.3	57.0

Quorn & Mountsorrel Castle (5244)²			
		vote	share
Shepherd R.*	Con	1,721	68.7
Slater D.*	Con	1,465	-
Brown P.	Lab	784	31.3
Parks R.	Lab	637	-
Turnout		47.7	37.4

Rothley & Thurcaston (5042)²			
		vote	share
Osborne P.*	Con	1,831	72.1
Wise D. Ms.*	Con	1,715	-
Richardson J. Ms.	Lab	449	17.7
Young D.	Lab	362	-
Bye J.	UKIP	259	10.2
Turnout		50.9	54.4

Shepshed East (5274)²			
		vote	share
Bebbington E. Ms.	Con	837	38.4
Poole C. Ms.	Lab	805	36.9
Lennie J. Ms.	Lab	802	-
Tassell J. Ms.	Con	728	-
Popley C. Ms.*	LD	540	24.7
Popley J.	LD	423	-
Turnout		41.6	1.5

Shepshed West (5557)²			
		vote	share
Radford C. Ms.*	Con	1,000	41.4
Burr B.*	Con	960	-
Fox M.	Lab	934	38.7
Timson G. Ms.	Lab	801	-
Horn D. Ms.	LD	481	19.9
Hill T. Ms.	LD	396	-
Turnout		45.3	2.7

Sileby (5641)²			
		vote	share
Brown R.*	Con	1,278	65.5
Paling A.	Con	1,044	-
Thurby G.	Lab	674	34.5
Watson R.	Lab	625	-
Turnout		36.8	30.9

System East (4939)²			
		vote	share
Pacey K.*	Con	925	50.3
Hampson S.*	Con	894	-
Lovell C.	Lab	572	31.1
Rose S.	Lab	542	-
Dyer M.	BNP	343	18.6
Turnout		39.3	19.2

System West (5208)²			
		vote	share
Barkley T.*	Con	1,062	60.8
Vardy E.	Con	964	-
Spibey I.	Lab	684	39.2
Karsanji R.	Lab	591	-
Turnout		35.8	21.6

The Wolds (2525)			
		vote	share
Bokor J. Ms.*	Con	901	62.7
Dale H. Ms.	Lab	298	20.7
Sharpe I.	LD	238	16.6
Turnout		57.5	42.0

Thurmaston (7559)³			
		vote	share
Harley P.*	Con	1,473	53.0
Lowe M.	Con	1,399	-
Seaton B. Ms.*	Con	1,309	-
Brown S.	Lab	1,306	47.0
Knaggs D.	Lab	1,153	-
Knaggs J. Ms.	Lab	1,058	-
Turnout		39.8	6.0

Wreake Villages (2327)			
		vote	share
Blain M.	Con	904	78.1
Adams G. Ms.	Lab	253	21.9
Turnout		50.0	56.3

