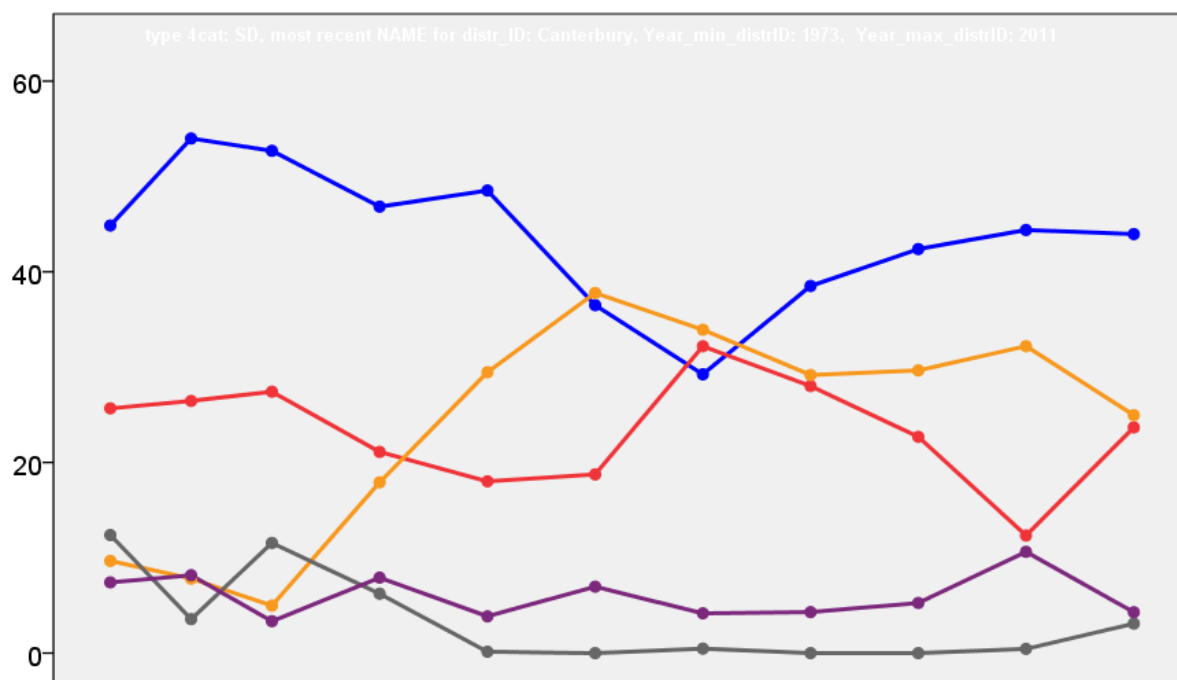


Canterbury City Council Election Results 1973-2011



Colin Rallings and Michael Thrasher
The Elections Centre
Plymouth University

The information contained in this report has been obtained from a number of sources. Election results from the immediate post-reorganisation period were painstakingly collected by Alan Willis largely, although not exclusively, from local newspaper reports. From the mid-1980s onwards the results have been obtained from each local authority by the Elections Centre. The data are stored in a database designed by Lawrence Ware and maintained by Brian Cheal and others at Plymouth University. Despite our best efforts some information remains elusive whilst we accept that some errors are likely to remain. Notice of any mistakes should be sent to elections@plymouth.ac.uk. The results sequence can be kept up to date by purchasing copies of the annual Local Elections Handbook, details of which can be obtained by contacting the email address above.

Front cover: the graph shows the distribution of percentage vote shares over the period covered by the results. The lines reflect the colours traditionally used by the three main parties. The grey line is the share obtained by Independent candidates while the purple line groups together the vote shares for all other parties.

Rear cover: the top graph shows the percentage share of council seats for the main parties as well as those won by Independents and other parties. The lines take account of any by-election changes (but not those resulting from elected councillors switching party allegiance) as well as the transfers of seats during the main round of local election.

The lower graph shows for each main round of local elections the overall percentage turnout (solid line), the percentage of women candidates standing at (dotted line) and the percentage of women among those elected (hashed line).

Canterbury - 1973

Barham Downs (1918)

		vote	share
Wilkins A.	Con	425	42.7
Fagg C.	Ind	373	37.4
Heathcote E.	Lab	198	19.9
Turnout		52.3	5.2

Blean Forest (1996)

		vote	share
McCabe H. Ms.	Ind	536	59.0
Eggleton E.	Con	307	33.8
Wallace F.	Lab	66	7.3
Turnout		48.2	25.2

Harbledown (1816)

		vote	share
Payne A.	Lib	634	59.3
Brown K. Ms.	Con	385	36.0
Cochrane J. Ms.	Lab	51	4.8
Turnout		59.2	23.3

Harbour (3816)²

		vote	share
Hopkins H.	Con	903	58.6
Martin G.	Con	898	-
Chandler M.	Lab	639	41.4
May L.	Lab	530	-
Turnout		40.4	17.1

Little Stour (1683)

		vote	share
Montgomery J.	Ind	0	0.0
Turnout		0.0	0.0

No. 1 (Canterbury: Dane John) (6360)⁴

		vote	share
Buckworth H.	Con	1,190	40.9
Berry A. Ms.	Con	1,091	-
Attwood M. Ms.	Con	1,029	-
Fisher L.	Con	991	-
Ormrod B. Ms.	Lab	989	34.0
Brough J.	Lab	985	-
Kingston C.	Lab	975	-
Davey P.	Lab	971	-
Goulden S. Ms.	Lib	727	25.0
Fisher A.	Lib	720	-
Clark J.	Lib	669	-
Whyte P.	Lib	652	-
Turnout		44.7	6.9

No. 10 (Whitstable: Seasalter) (3176)²

		vote	share
Windsor C.	Con	650	54.4
O'Callaghan M. Ms.	Con	550	-
Rigden C. Ms.	Lib	545	45.6
Postgate P. Ms.	Lib	530	-
Turnout		37.6	8.8

No. 11 (Whitstable: South) (3960)²

		vote	share
Pegrum M. Ms.	Con	898	53.0
Saunders J.	Lab	797	47.0
Clark D.	Lab	795	-
Trent J.	Con	783	-
Turnout		42.8	6.0

No. 18 (Westbere) (1189)

		vote	share
Jenkins J.	Lab	373	49.5
Bumstead E. Ms.	Con	234	31.0
Gardber K.	Ind	147	19.5
Turnout		65.1	18.4

No. 19 (Chislet) (828)

		vote	share
Hodges C.	Ind	294	73.0
Jenkins I. Ms.	Lab	109	27.0
Turnout		49.0	45.9

No. 2 (Canterbury: Northgate) (8292)⁵

		vote	share
Bennett L.	Con	1,530	50.4
Porter B.	Con	1,524	-
Barber H. Ms.	Lab	1,505	49.6
Butler M.	Lab	1,460	-
Bevan F.	Lab	1,458	-
Walker A.	Lab	1,441	-
Shevlin P.	Lab	1,428	-
Edwards P.	Con	1,400	-
Edwards R. Ms.	Con	1,351	-
Peskett N. Ms.	Con	1,344	-
Turnout		36.9	0.8

No. 24 (Chartham) (2856)²

		vote	share
Palmer A.	Ind	638	69.3
Parker E.	Ind	583	-
Twyford J.	Lab	283	30.7
Crooks C.	Lab	276	-
Turnout		32.0	38.5

No. 3 (Canterbury: Westgate) (9729)⁶

		vote	share
Scott-Knight M. Ms.	Con	1,803	44.3
Steptoe M.	Con	1,790	-
Dempsey I.	Con	1,770	-
Brickwood N.	Con	1,766	-
Fuller M.	Lab	1,764	43.4
Willoughby R.	Con	1,721	-
Acres G.	Con	1,715	-
Cheeseman V.	Lab	1,668	-
Morgan R.	Lab	1,655	-
Robson A.	Lab	1,645	-
Margrie D.	Lab	1,618	-
Turner C.	Lab	1,610	-
Sheppard E.	Comm	269	6.6
Hooper S.	NF	230	5.7
Turnout		38.9	1.0

No. 5 (Herne Bay: Central) (5000)³

		vote	share
Fortune G. Ms.	Con	1,174	45.9
Waddington A.	Con	1,074	-
Kimpton V.	Con	1,038	-
Sharp N.	Lab	704	27.5
Hawksworth L.	Lab	687	-
Meeham K.	Ind	681	26.6
Smith A.	Lab	636	-
Turnout		51.2	18.4

No. 6 (Herne Bay: Eastcliff Andreclver) (5498)³

		vote	share
Collins B.	Res	1,576	33.6
Peard C.	Con	1,406	30.0
Fowler I.	Ind	1,349	28.8
Dimond R.	Res	1,056	-
Seymour J. Ms.	Lab	356	7.6
Nightscale V.	Lab	331	-
Turnout		85.2	3.6

No. 7 (Herne Bay: Greenhill Andherne) (5886)³

		vote	share
Donnithorne S.	Con	1,268	35.4
Holgate J.	Res	1,001	27.9
Nock J.	Res	886	-
Scurr C. Ms.	Con	855	-
Barrand H. Ms.	Con	754	-
Goodban G.	Ind	735	20.5
Berrington J. Ms.	Lab	581	16.2
Brown G.	Lab	579	-
Install A.	Lab	508	-
Turnout		60.9	7.4

No. 9 (Whitstable: Chestfield) (3400)²

		vote	share
Greenhouse E.	Con	1,118	69.9
Porter A.	Con	1,071	-
Jelfs B.	Lib	481	30.1
Harvey C. Ms.	Lib	458	-
Turnout		47.0	39.8

North Nailbourne (1806)

		vote	share
Shirley L.	Con	0	0.0
Turnout		0.0	0.0
Stone Street (1357)			
Castle T.	Con	0	0.0
Turnout		0.0	0.0

Sturry North (1798)

		vote	share
Gould G.	Lab	387	65.0
Wood P.	Con	208	35.0
Turnout		34.0	30.1

Sturry South (1911)

		vote	share
Carver E.	Con	467	77.1
Kirkham F. Ms.	Lab	139	22.9
Turnout		31.9	54.1

Swalecliffe (3086)²

		vote	share
O'Callaghan M.	Con	787	52.4
Brown N.	Con	764	-
Ware K.	Lib	716	47.6
Sinclair G.	Lib	707	-
Turnout		48.7	4.7

Tankerton (3129)²

		vote	share
Brown M. Ms.	Con	1,014	62.5
Stewart E.	Con	899	-
Hickson A.	Lib	608	37.5
Victor D.	Lib	600	-
Turnout		51.8	25.0

West Bay (4871)³

		vote	share
Conyon J.	Con	1,442	61.4
Alexander H.	Con	1,391	-
Stockwell L.	Con	1,322	-
Price E.	Lab	908	38.6
Seymour P.	Lab	901	-
Thomas W.	Lab	807	-
Turnout		48.2	22.7

Canterbury - 1976

Barham Downs (1958)

		vote	share
Wilkins A.	Con	752	80.3
McDonald G.	Lab	185	19.7
Turnout		47.9	60.5

Blean Forest (1995)

		vote	share
McCabe H. Ms.	Con	767	79.2
Willsman S. Ms.	Lab	202	20.8
Turnout		48.8	58.3

Harbledown (1827)

		vote	share
Snell J.	Con	849	84.7
Cochrane D.	Lab	153	15.3
Turnout		54.8	69.5

Harbour (3578)²

		vote	share
Hopkins H.	Ind	804	39.2
Trent J.	Con	728	35.5
O'Callaghan M.	Con	720	-
Nunn J. Ms.	Lab	521	25.4
Rowden R.	Lab	461	-
Turnout		50.3	3.7

Little Stour (1687)			
		vote	share
Montgomery J.	Ind	766	82.1
Padgett S.	Lab	167	17.9
	Turnout	55.3	64.2
No. 1 (Canterbury: Dane John) (6492) ⁴			
		vote	share
Buckworth H.	Con	1,524	47.0
Flisher L.	Con	1,433	-
Hattee G.	Con	1,342	-
Berry A. Ms.	Con	1,309	-
Whitemore M.	Lab	1,247	38.5
Ruddock J.	Lab	1,227	-
Spencer R.	Lab	1,180	-
Bevan Y. Ms.	Lab	1,179	-
Mumford D.	Lib	472	14.6
Eagle J.	Lib	392	-
	Turnout	47.8	8.5
No. 10 (Whitstable: Seasalter) (3584) ²			
		vote	share
Windsor C.	Con	931	64.0
O'Callaghan M. Ms.	Con	896	-
Fell R.	Lib	275	18.9
Jenkins L.	Lab	249	17.1
Shenow E. Ms.	Lab	217	-
Chamberlain P.	Lib	216	-
	Turnout	41.2	45.1
No. 11 (Whitstable: South) (4082) ²			
		vote	share
Wildman W.	Con	1,067	47.5
Rigden C. Ms.	Con	945	-
Saunders J.	Lab	809	36.1
Wetherly J.	Lab	556	-
Weekley B.	Lib	368	16.4
	Turnout	49.8	11.5
No. 18 (Westbere) (1160)			
		vote	share
Jenkins J.	Lab	329	51.1
Williams V.	Con	315	48.9
	Turnout	55.5	2.2
No. 19 (Chislet) (838)			
		vote	share
Hodges G.	Con	309	70.1
Jenkins I. Ms.	Lab	132	29.9
	Turnout	52.6	40.1
No. 2 (Canterbury: Northgate) (8681) ⁵			
		vote	share
Bennett L.	Con	2,067	54.2
Porter B.	Con	2,054	-
Woodley S.	Con	1,950	-
Hoare T.	Con	1,920	-
Attwood M. Ms.	Con	1,880	-
Bevan F.	Lab	1,747	45.8
Robson A.	Lab	1,737	-
Rye B.	Lab	1,631	-
Walton J.	Lab	1,621	-
Willsman P.	Lab	1,605	-
	Turnout	44.8	8.4
No. 24 (Chartham) (2808) ²			
		vote	share
Cooper R.	Con	739	53.6
Palmer A.	Con	696	-
Maccaw B.	Lib	337	24.5
Crooks C.	Lab	302	21.9
Twyford J.	Lab	284	-
	Turnout	45.8	29.2

No. 3 (Canterbury: Westgate) (10808) ⁶			
		vote	share
Stephoe M.	Con	2,383	42.8
Scott-Knight M. Ms.	Con	2,377	-
Dempsey I.	Con	2,368	-
Brickwood N.	Con	2,361	-
Willoughby R.	Con	2,308	-
Austin A.	Con	2,283	-
Fuller M.	Lab	1,958	35.2
Carr M. Ms.	Lab	1,703	-
Ormrod B. Ms.	Lab	1,663	-
Ripington F.	Lab	1,628	-
Margrie D.	Lab	1,627	-
Rye M. Ms.	Lab	1,560	-
Fisher A.	Lib	1,020	18.3
Murray B. Ms.	Lib	993	-
Turner M. Ms.	Lib	852	-
Tilbee W.	Lib	839	-
Sheppard E.	Comm	202	3.6
	Turnout	46.7	7.6
No. 5 (Herne Bay: Central) (4909) ³			
		vote	share
Fortune G. Ms.	Con	1,113	43.2
Dutton R.	Con	1,082	-
Waddington A.	Con	997	-
Scarth F.	Res	810	31.4
Price E.	Lab	654	25.4
Woods T.	Lab	495	-
Berrington J. Ms.	Lab	487	-
	Turnout	44.5	11.8
No. 6 (Herne Bay: Eastcliff Andreculver) (5814) ³			
		vote	share
Fowler I.	Con	1,710	44.5
Peard C.	Con	1,643	-
Collins B.	Res	1,423	37.0
Barrand H. Ms.	Con	1,035	-
Lavender K.	Lib	397	10.3
Philby W.	Lib	356	-
Brown G.	Lab	315	8.2
Bone W.	Lab	263	-
Bone N. Ms.	Lab	244	-
	Turnout	48.1	7.5
No. 7 (Herne Bay: Greenhill Andherne) (6002) ³			
		vote	share
Donnithorne S.	Con	1,347	39.3
Holgate J.	Res	1,166	34.0
Gedge J.	Con	1,092	-
Lucas W.	Res	1,043	-
Edwards C.	Con	1,026	-
Hunter B.	Lab	572	16.7
Seymour P.	Lab	554	-
Sharp N.	Lab	494	-
Hampshire R.	Lib	344	10.0
Corney G.	Lib	262	-
	Turnout	48.0	5.3
No. 9 (Whitstable: Chestfield) (3438) ²			
		vote	share
Porter A.	Con	1,354	83.8
Greenhouse E.	Con	1,347	-
McLellan D.	Lab	262	16.2
Fitzpatrick M. Ms.	Lab	252	-
	Turnout	48.4	67.6
North Nailbourne (1757)			
		vote	share
Shirley L.	Con	648	67.5
Purchase J.	Lib	234	24.4
Smith N.	Lab	78	8.1
	Turnout	54.8	43.1
Stone Street (1354)			
		vote	share
Castle T.	Con	635	87.5
Loker R.	Lab	91	12.5
	Turnout	53.6	74.9

Sturry North (1836)			
		vote	share
Coleman V. Ms.	Con	354	50.3
Hamilton A.	Lab	350	49.7
	Turnout	38.3	0.6
Sturry South (1863)			
		vote	share
Carver E.	Con	534	71.8
Osmond D.	Lab	210	28.2
	Turnout	39.9	43.5
Swalecliffe (3002) ²			
		vote	share
Samper J. Ms.	Con	1,108	70.9
Strudwick R.	Con	1,058	-
Turner N.	Lab	455	29.1
Chandler M.	Lab	446	-
	Turnout	53.4	41.8
Tankerton (3011) ²			
		vote	share
Steele T.	Con	1,277	85.1
Brown M. Ms.	Con	1,215	-
Macmillan S.	Lab	223	14.9
Jordan R.	Lab	205	-
	Turnout	51.0	70.3
West Bay (4789) ³			
		vote	share
Alexander H.	Con	1,286	74.0
Lilley R.	Con	1,283	-
Stockwell L.	Con	1,262	-
Moore R.	Lab	452	26.0
Parker L.	Lab	439	-
Wells J.	Lab	436	-
	Turnout	38.4	48.0
Canterbury - 1979			
Barham Downs (2054)			
		vote	share
Baker	Con	1,093	68.8
Forrest	Lab	495	31.2
	Turnout	78.3	37.7
Barton (5138) ³			
		vote	share
Cox C.	Con	2,250	66.6
Porter	Con	2,237	-
Nicholls K. Ms.	Con	1,581	-
McLellan D.	Lab	1,126	33.4
Marsh	Lab	1,096	-
Ormrod D.	Lab	1,055	-
	Turnout	72.1	33.3
Blean Forest (2065)			
		vote	share
McCabe H. Ms.	Con	972	64.2
Burrett	Ind	299	19.7
Willsman S. Ms.	Lab	243	16.1
	Turnout	74.0	44.5
Chartham (2172)			
		vote	share
Cooper	Con	933	60.1
Crooks	Lab	619	39.9
	Turnout	71.5	20.2
Chestfield (3678) ²			
		vote	share
Greehouse	Con	2,158	75.1
Porter A.	Con	1,876	-
Mayhew	Lab	717	24.9
	Turnout	78.7	50.1

Barton (5239)³			
		vote	share
Wales P.	LD	1,522	50.4
Arter C.	LD	1,497	-
Taber T. Ms.	LD	1,463	-
Attwood M. Ms.*	Con	1,184	39.2
Boswell H.	Con	1,049	-
Robinson D.	Con	987	-
Seller A. Ms.	Lab	204	6.8
McLellan D.	Lab	197	-
Goad L.	Lab	190	-
Bassett J.	Green	110	3.6
Davidson G. Ms.	Green	87	-
Turnout		56.3	11.2
Blean Forest (2297)			
		vote	share
McCabe H. Ms.*	Con	596	57.5
Perkins B. Ms.	LD	225	21.7
Foster N.	Lab	151	14.6
Meaden G.	Green	64	6.2
Turnout		45.1	35.8
Chartham (2177)			
		vote	share
Rowley B.	LD	659	53.1
Steele T.*	Con	445	35.9
Whyte J.	Lab	104	8.4
Gilchrist K. Ms.	Green	33	2.7
Turnout		57.0	17.2
Chestfield (4291)²			
		vote	share
Archer J.	Con	1,054	50.3
Barzotelli D.	Con	980	-
Viner J.	LD	525	25.0
Walker D.	LD	446	-
Ross K.	Green	274	13.1
Wightman J.	Lab	243	11.6
Sedgwick-Jell T.	Lab	230	-
Turnout		47.5	25.2
Gorrell (4209)²			
		vote	share
Fielding J. Ms.*	Con	1,048	47.8
Burke P.	Con	1,047	-
McLachan W.	Lab	674	30.8
Reilly J.	Lab	616	-
Farrall C.	LD	362	16.5
Hobday M.	LD	306	-
Plaster J. Ms.	Green	107	4.9
Turnout		52.1	17.1
Harbledown (1619)			
		vote	share
Dixey M.*	LD	707	62.5
Northey M.	Con	372	32.9
Vickerstaff S. Ms.	Lab	42	3.7
Thomas M. Ms.	Green	11	1.0
Turnout		69.9	29.6
Harbour (3486)²			
		vote	share
Seath J. Ms.	Lab	728	40.5
Rees T.	Lab	660	-
Hopkins J. Ms.*	Con	544	30.3
Summers P. Ms.*	Con	444	-
Stark P.	LD	383	21.3
Bentley M.	LD	370	-
Cookman B.	Green	143	8.0
Turnout		50.6	10.2
Herne (8119)³			
		vote	share
James T.	LD	1,873	46.0
Baylis J.	LD	1,713	-
Wigley M.	LD	1,691	-
Gomm D.*	Con	1,301	31.9
Slater A.*	Con	1,263	-
Street-Williams M.	Con	1,240	-
Davis C. Ms.	Green	455	11.2
Ayling B. Ms.	Lab	443	10.9
Walker R.	Lab	413	-
Tritton M. Ms.	Lab	388	-
Turnout		48.3	14.0

Heron (5824)³			
		vote	share
Hayes J. Ms.*	LD	1,596	55.1
Law I. Ms.	LD	1,511	-
Flaherty R.	LD	1,510	-
Lee P.	Con	899	31.0
Bissett W. Ms.	Con	843	-
Macleod S.	Con	832	-
Green D.	Lab	250	8.6
Walker C. Ms.	Lab	243	-
Gomez V. Ms.	Lab	242	-
Bauwens R.	Green	152	5.2
Turnout		49.3	24.1
Little Stour (1798)			
		vote	share
Nicholls F.	Con	405	42.8
Day J. Ms.	LD	213	22.5
Shelley B.	Lab	196	20.7
Cashdan E. Ms.	Green	132	14.0
Turnout		52.6	20.3
Marshside (1982)			
		vote	share
Watling P. Ms.	Lab	559	51.0
Tucker A.*	Con	457	41.7
Hampshire D.	Green	80	7.3
Turnout		55.3	9.3
North Nailbourne (2024)			
		vote	share
Pentim D.*	Con	612	55.4
Steed M.	LD	349	31.6
Owens P.	Lab	99	9.0
Marx N.	Green	45	4.1
Turnout		54.6	23.8
Northgate (5459)³			
		vote	share
Douglas I.*	Lab	1,196	51.6
Reid R.	Lab	1,183	-
Whitemore M.	Lab	1,172	-
Matthews J. Ms.	Con	515	22.2
Acton R.	Con	509	-
Quenby M. Ms.	Con	492	-
Fisher A.	LD	464	20.0
Janecki R.	LD	428	-
Stark M.	LD	426	-
Cantwell C. Ms.	Green	141	6.1
Boothroyd M.	Green	100	-
Stephens P.	Green	94	-
Turnout		43.8	29.4
Reculver (6979)³			
		vote	share
Collins B.*	Con	1,592	48.8
Yonge J. Ms.*	Con	1,587	-
Reuby G. Ms.	Con	1,481	-
Hando K.	LD	795	24.4
Weston D. Ms.	LD	736	-
Pozsonyi N.	LD	692	-
Faux-Bowyer L. Ms.	Lab	470	14.4
Johnson J.	Lab	429	-
Ghowry K.	Lab	410	-
Bauwens M. Ms.	Green	407	12.5
Turnout		45.4	24.4
Seasalter (5334)²			
		vote	share
Hyams A.	Con	1,051	49.8
Windsor C.*	Con	1,050	-
Rothwell J.	LD	520	24.7
Wildley K.	LD	503	-
Fox T.	Lab	411	19.5
Samuel G. Ms.	Lab	409	-
Barnes M. Ms.	Green	127	6.0
Turnout		41.4	25.2

St. Stephens (7267)³			
		vote	share
Hornsby W.	LD	1,553	49.1
Walker J.*	LD	1,536	-
Ruston R.*	LD	1,471	-
Austin A.	Con	939	29.7
Jennings R.	Con	885	-
Maslen P.	Con	832	-
Bagg J. Ms.	Lab	499	15.8
Foster A.	Lab	487	-
Willcox R.	Lab	462	-
Carden-Price C.	Green	175	5.5
Pickard L.	Green	122	-
Toft C.	Green	98	-
Turnout		43.4	19.4
Stone Street (1545)			
		vote	share
Castle T.*	Con	486	56.6
Vye J. Ms.	LD	254	29.6
Bond P.	Lab	78	9.1
Cant D. Ms.	Green	41	4.8
Turnout		55.6	27.0
Sturry North (1896)			
		vote	share
Sargeant M. Ms.	Lab	485	49.3
Crapper R.*	Con	315	32.0
Baddeley G. Ms.	LD	141	14.3
Scott C.	Green	43	4.4
Turnout		51.9	17.3
Sturry South (2572)			
		vote	share
Irwin M.	LD	512	45.3
Carver E.*	Con	377	33.4
Fenyo A.	Lab	194	17.2
Boothroyd L. Ms.	Green	46	4.1
Turnout		43.9	12.0
Swalecliffe (2977)²			
		vote	share
Stanley A. Ms.	LD	787	46.2
Stanley T.	LD	752	-
Legg H.*	Con	618	36.3
Samper J. Ms.*	Con	609	-
Williams I. Ms.	Lab	212	12.4
Cant S. Ms.	Lab	179	-
Hampshire J. Ms.	Green	87	5.1
Turnout		56.0	9.9
Tankerton (3161)²			
		vote	share
Clifford K.	Con	752	47.4
Rigden C. Ms.*	Con	720	-
Maflin N.	LD	358	22.6
Worth S. Ms.	LD	339	-
Wright M.	Green	269	17.0
Jackson N.	Lab	206	13.0
Young S.	Lab	179	-
Turnout		48.2	24.9
West Bay (4954)³			
		vote	share
Pears J. Ms.	Con	905	39.2
Bliss D.	Con	894	-
Todd S. Ms.	Con	842	-
Simcock J. Ms.	LD	721	31.2
Pine S. Ms.	LD	714	-
Thornton P.	LD	667	-
Halfpenry P.	Lab	532	23.1
Hunter B.	Lab	526	-
Mitchell A.	Lab	500	-
Ross P. Ms.	Green	150	6.5
Turnout		48.5	8.0

Stone Street (1578)			
		vote	share
Patterson M.	Con	401	61.4
Nicholson A. Ms.	LD	153	23.4
Godfrey F. Ms.	Lab	99	15.2
	Turnout	41.5	38.0
Sturry North (1893)			
		vote	share
Bond P.*	Lab	260	48.6
Craven V. Ms.	Con	148	27.7
Mitchell J.	LD	127	23.7
	Turnout	28.3	20.9
Sturry South (2545)			
		vote	share
Attwood M. Ms.*	Con	587	69.8
Barnard S. Ms.	Lab	156	18.5
Sole M.	LD	98	11.7
	Turnout	33.2	51.2
Swalecliffe (3146) ²			
		vote	share
Thomas J.	Con	533	41.1
Todd P.	Con	515	-
Domain M.	Lab	411	31.7
Todd P.	Lab	371	-
Hardy J. Ms.	LD	353	27.2
Hooker K.	LD	299	-
	Turnout	41.6	9.4
Tankerton (3146) ²			
		vote	share
Fisher M.*	Con	658	53.9
Harrison J.	Con	642	-
Willey K.	LD	322	26.4
Willey P. Ms.	LD	271	-
Gambrill P.	Lab	240	19.7
Morgan-Powell A. Ms.	Lab	214	-
	Turnout	39.0	27.5
West Bay (5087) ³			
		vote	share
Brade W.*	Lab	957	49.6
Hunter B.*	Lab	908	-
Walker R.*	Lab	884	-
Taylor E. Ms.	Con	706	36.6
Lee P.	Con	677	-
Sims K.	Con	663	-
Burns M. Ms.	LD	265	13.7
Lavender K.	LD	225	-
Pozsonyi N.	LD	190	-
	Turnout	37.7	13.0
Westgate (6147) ³			
		vote	share
Jeffries M. Ms.*	LD	760	34.6
Parkinson R.	LD	723	-
Butcher J. Ms.	Lab	701	31.9
Pearson J. Ms.	LD	695	-
Gale J.	Lab	674	-
McFall A.	Lab	630	-
Hagen C. Ms.	Con	534	24.3
Goodban G.	Con	529	-
Jordan P.	Con	525	-
Rogers P.	Green	200	9.1
Freaney L. Ms.	Green	184	-
	Turnout	36.1	2.7
Wincheap (5075) ³			
		vote	share
Maccaul C. Ms.*	LD	927	59.0
Perkins A.	LD	915	-
Eden-Green N.	LD	879	-
Derrick J.	Lab	308	19.6
Whyte J.	Lab	284	-
Manning C. Ms.	Lab	283	-
Anderson J.	Con	236	15.0
Boswell H.	Con	233	-
Barnard R.	Con	231	-
Mills C.	Green	99	6.3
Sansom L. Ms.	Green	81	-
	Turnout	30.8	39.4

Canterbury - 2003

Barham Downs (2086)			
		vote	share
Vye M.*	LD	761	68.4
Scott F.	Con	318	28.6
Fenyo A.	Lab	34	3.1
	Turnout	53.5	39.8
Barton (6182) ³			
		vote	share
Brett C. Ms.	LD	1,051	42.3
Kay-Bradley C. Ms.	LD	919	-
Took C.	LD	855	-
Northey M.*	Con	854	34.4
Hook P. Ms.	Con	799	-
Ogier T.	Con	736	-
Cooper L. Ms.	Lab	263	10.6
Parsons C.	Lab	242	-
Bothwell K.	Green	175	7.0
Mills C.	Green	145	-
Cooper J.	CTPP	143	5.8
	Turnout	30.5	7.9
Blean Forest (4223) ²			
		vote	share
McCabe H. Ms.*	Con	672	66.7
Gilbey J.	Con	562	-
Meaden G.	Green	176	17.5
Fuller M.	Lab	159	15.8
Rogers P.	Green	146	-
McLellan D.	Lab	139	-
	Turnout	22.6	49.3
Chartham & Stone Street (3909) ²			
		vote	share
Doyle R. Ms.*	Con	756	54.2
Peterson M.*	Con	696	-
Nicholson A. Ms.	LD	372	26.6
Colthup C. Ms.	LD	359	-
Chiappino J.	Lab	268	19.2
Bhujan J.	Lab	196	-
	Turnout	36.2	27.5
Chestfield & Swalecliffe (6629) ³			
		vote	share
Samper J. Ms.*	Con	1,577	66.3
Thomas J.*	Con	1,503	-
Todd P.*	Con	1,495	-
Hardy J. Ms.	Lab	434	18.2
Wreford R. Ms.	Lab	386	-
Brown M.	LD	369	15.5
Steed M.	LD	345	-
Tiburtius S. Ms.	LD	328	-
	Turnout	36.5	48.0
Gorrell (4283) ²			
		vote	share
Halfpenny P.*	Lab	805	45.0
McLachlan W.*	Lab	754	-
Perkins J. Ms.	Con	746	41.7
Carnell P.	Con	720	-
Lansdell M. Ms.	LD	177	9.9
Lansdell R.	LD	144	-
Holloway P.	Soc All	59	3.3
	Turnout	40.9	3.3
Greenhill & Eddington (3944) ²			
		vote	share
Matthews R.*	LD	478	36.1
Oakes N.*	LD	465	-
Laker L. Ms.	Con	413	31.2
McMahan V.	Con	412	-
Brade W.*	Lab	359	27.1
Walker R.*	Lab	330	-
Hampshire J.	Green	73	5.5
	Turnout	32.8	4.9

Harbledown (1987)			
		vote	share
Dixey M.*	LD	517	58.4
Taylor E. Ms.	Con	264	29.8
Foster V. Ms.	Lab	104	11.8
	Turnout	44.7	28.6
Harbour (4097) ²			
		vote	share
Seath J. Ms.	Lab	729	47.6
Wratten J.*	Lab	650	-
Harrison M.	Con	485	31.6
Smith H.	Con	455	-
La Roche B. Ms.	Soc All	161	10.5
Berridge J. Ms.	LD	158	10.3
Bale G. Ms.	LD	152	-
	Turnout	35.8	15.9
Herne & Broomfield (5923) ³			
		vote	share
Mavers R.*	LD	685	33.0
Wright I.	LD	653	-
Bright R.	Con	619	29.8
Shannon K. Ms.	Con	609	-
Roper P. Ms.	Con	599	-
Robinson D.	LD	565	-
Moore J.	UK Ind	299	14.4
Davis C. Ms.	Green	261	12.6
Bigg E. Ms.	UK Ind	214	-
Brown J.	Lab	213	10.3
Kendall T.	UK Ind	203	-
Tavener P.	Lab	203	-
Reeves E.	Lab	192	-
	Turnout	31.9	3.2
Heron (6130) ³			
		vote	share
Flaherty R.*	LD	1,050	54.1
Seager M. Ms.*	LD	1,017	-
Hando K.*	LD	960	-
Kadwell J. Ms.	Con	544	28.0
Herwin J. Ms.	Con	531	-
Smale R.	Con	515	-
Brade R.	Lab	346	17.8
Faux-Bowyer L. Ms.	Lab	317	-
Morris T.	Lab	304	-
	Turnout	32.0	26.1
Little Stour (2056)			
		vote	share
Norris L.*	Con	454	57.8
Linfoot A.*	LD	213	27.1
Forrest A.	Lab	119	15.1
	Turnout	38.3	30.7
Marshside (1947)			
		vote	share
Nee M.	Lab	348	52.0
Taylor H. Ms.	Con	321	48.0
	Turnout	34.9	4.0
North Nailbourne (2059)			
		vote	share
Oakey W.*	Con	574	56.2
Horsley J. Ms.	LD	447	43.8
	Turnout	50.0	12.4
Northgate (3955) ²			
		vote	share
Pepper R.*	Lab	583	49.6
Whitemore M.*	Lab	558	-
Gibbens G.	Con	469	39.9
Bunting D.	Con	443	-
Arter C.	LD	123	10.5
Frogley A.	LD	105	-
	Turnout	30.5	9.7

Northgate (3915) ²			
		vote	share
Ellis D.	Con	523	42.6
Pickersgill S-A. Ms.	Con	500	-
Whitemore M.*	Lab	433	35.3
Baldock A.	Lab	416	-
Brumfit A. Ms.	LD	126	10.3
Robinson P.	LD	121	-
Chivers S. Ms.	Green	115	9.4
Wilkins-Oppler R.	Ind	30	2.4
Turnout		29.9	7.3

Reculver (6671) ³			
		vote	share
Davis G. Ms.*	Con	1,385	46.9
Reuby G. Ms.*	Con	1,329	-
Taylor E. Ms.	Con	1,240	-
Abbatt J.	Herne Bay	763	25.8
Verrico J. Ms.	Herne Bay	639	-
Speed M.	Herne Bay	550	-
Burns M. Ms.	LD	535	18.1
Rush S. Ms.	LD	520	-
Garretty R.	UKIP	270	9.1
Turnout		40.3	21.1

Seasalter (6153) ³			
		vote	share
Law J. Ms.*	Con	1,518	61.6
Sharp M.*	Con	1,489	-
Windsor C.*	Con	1,461	-
Mummery R. Ms.	LD	493	20.0
Allan J.	Lab	455	18.5
Furber S.	Lab	402	-
Maslin D.	LD	377	-
Wood G.	LD	339	-
Turnout		38.3	41.6

St. Stephens (5208) ³			
		vote	share
Berridge M.*	LD	1,046	40.1
Calvert-Mindell J. Ms.	LD	1,028	-
Cragg R.*	Con	970	37.2
Gibbens A. Ms.	Con	920	-
Blake N.	LD	919	-
Avery K.*	Con	887	-
Podger R.	Green	341	13.1
Fenyo A.	Lab	252	9.7
Turnout		43.3	2.9

Sturry North (2042)			
		vote	share
Austin A.*	Con	421	59.4
Mitchell J.	LD	155	21.9
Forrest A.	Lab	133	18.8
Turnout		35.0	37.5

Sturry South (2215)			
		vote	share
Taylor H. Ms.*	Con	438	54.8
Steed M.	LD	272	34.0
Foster V. Ms.	Lab	90	11.3
Turnout		36.2	20.8

Tankerton (3738) ²			
		vote	share
Harrison J. Ms.*	Con	974	61.5
Fisher M.	Con	970	-
Dwight D. Ms.	LD	386	24.4
Clark J.	LD	340	-
Seath T.	Lab	223	14.1
Thacker R.	Lab	204	-
Turnout		42.9	37.1

West Bay (4741) ²			
		vote	share
Lee P.*	Con	750	39.6
McMahan V.*	Con	710	-
Raybaud J. Ms.	LD	572	30.2
Shepherd D.	LD	541	-
Dowle J.	Herne Bay	274	14.5
Wimble G.	Herne Bay	255	-
Hunter B.	Lab	180	9.5
Bigg E. Ms.	UKIP	118	6.2
Turnout		37.8	9.4

Westgate (5357) ³			
		vote	share
Dye S.	LD	912	39.9
Flanagan J.	LD	823	-
Linfield I. Ms.	LD	805	-
Charles J.	Con	685	30.0
Scates E.	Con	667	-
Waters R.	Con	658	-
Butcher J. Ms.	Lab	353	15.5
Godden E. Ms.	Green	334	14.6
Bukht J. Ms.	Lab	319	-
Meaden G.	Green	302	-
Jackson J.	Lab	283	-
Marshall S. Ms.	Green	259	-
Turnout		40.7	9.9

Wincheap (5840) ³			
		vote	share
Eden-Green N.*	LD	1,254	55.4
Maccaul C. Ms.*	LD	1,214	-
Perkins A.*	LD	1,189	-
Smith H.	Con	518	22.9
Smith M. Ms.	Con	492	-
Smith S. Ms.	Con	465	-
Bothwell K.	Green	290	12.8
Sansom L. Ms.	Green	219	-
Smyth T.	Green	211	-
Manning C. Ms.	Lab	203	9.0
Todd P.	Lab	195	-
Whyte J.	Lab	188	-
Turnout		38.3	32.5

Canterbury - 2011

Barham Downs (2182)			
		vote	share
Oakey W.	Con	538	42.9
Sole M.	LD	510	40.7
Taylor A. Ms.	Green	206	16.4
Turnout		57.5	2.2

Barton (6060) ³			
		vote	share
Bellamy J.	Con	887	31.5
Vickers P. Ms.*	LD	860	30.5
Williams S.	Con	809	-
Casal-Gimenez J.	LD	788	-
Parsons A.*	LD	787	-
McGill M.	Con	745	-
Whitemore M.	Lab	621	22.1
McLellan D.	Lab	599	-
Thirkell A. Ms.	Lab	561	-
Bothwell K.	Green	448	15.9
Turnout		43.1	1.0

Blean Forest (5454) ²			
		vote	share
McCabe H. Ms.*	Con	626	51.7
Gilbey J.*	Con	568	-
Murray A.	Green	400	33.1
Scandrett Z. Ms.	Green	300	-
Clark H. Ms.	LD	184	15.2
Enever D. Ms.	LD	173	-
Turnout		22.4	18.7

Chartham & Stone Street (4286) ²			
		vote	share
Doyle R. Ms.*	Con	1,119	53.4
Thomas R.	Con	929	-
Chandler A.	Lab	571	27.2
Foster V. Ms.	Lab	446	-
Atkin P.	LD	407	19.4
Robinson P.	LD	336	-
Turnout		48.7	26.1

Chestfield & Swalecliffe (6771) ³			
		vote	share
Samper J. Ms.*	Con	1,912	63.9
Thomas I.	Con	1,848	-
Todd P.*	Con	1,831	-
Walker R.	Lab	747	25.0
McLachlan E. Ms.	Lab	730	-
Cartright D. Ms.	Lab	729	-
Howard C. Ms.	LD	334	11.2
Allen J.	LD	333	-
Benzie R.	LD	292	-
Turnout		48.0	38.9

Gorrell (4582) ²			
		vote	share
Clark A.	Con	1,151	52.0
O'Dea A. Ms.	Con	1,046	-
Cornell C.	Lab	686	31.0
Todd P.	Lab	600	-
Stevens A.	Green	227	10.2
Trimingham J.	Green	164	-
Curtis C.	LD	151	6.8
Dearth J.	LD	133	-
Turnout		47.7	21.0

Greenhill & Eddington (4473) ²			
		vote	share
Bright R.*	Con	648	37.7
Hirst D.	Con	603	-
Dengate R.	Lab	531	30.9
Clarke M.	Lab	503	-
Flaherty M. Ms.*	LD	451	26.2
Oakes N.	LD	362	-
Matthews R.*	Ind	91	5.3
Turnout		38.4	6.8

Harbledown (2020)			
		vote	share
Dixey M.*	LD	613	55.3
Dwyer B.	Con	359	32.4
Forrest A.	Lab	136	12.3
Turnout		54.9	22.9

Harbour (3979) ²			
		vote	share
Cartwright P.	Lab	920	49.1
Wratten J.*	Lab	901	-
Perkins J. Ms.*	Con	453	24.2
Perkins M.	Con	429	-
Voizey G.	LD	389	20.8
Scott H. Ms.	LD	378	-
Farmer H.	UKIP	111	5.9
Turnout		48.1	24.9

Herne & Broomfield (6291) ³			
		vote	share
Bissett W. Ms.*	Con	1,155	46.9
Vickery-Jones P.*	Con	1,090	-
Sonnex S. Ms.*	Con	1,069	-
Moore J.	Ind	482	19.6
Burns M. Ms.	LD	460	18.7
Cooper C. Ms.	LD	403	-
Tobin C.	Ind	368	-
Douglas K. Ms.	Lab	366	14.9
Steed M.	LD	353	-
Wheeldon C. Ms.	Lab	345	-
Nerssessian G. Ms.	Lab	326	-
Madowall B.	Ind	286	-
Turnout		39.2	27.3

Heron (6114) ³			
		vote	share
Cook A.	Con	895	38.6
Flaherty R.*	LD	824	35.6
Howes J.	Con	808	-
Raybaud J. Ms.	LD	787	-
Shepherd D.	LD	750	-
Limbu H.	Con	721	-
Bowden B. Ms.	Lab	597	25.8
Faux-Bowyer L. Ms.	Lab	560	-
Harrison M.	Lab	536	-
Turnout		38.6	3.1

Little Stour (2089)

		vote	share
Staley B.*	LD	560	45.9
Northey M.	Con	516	42.3
Quilty F. Ms.	Lab	143	11.7
Turnout		58.7	3.6

Marshside (2324)

		vote	share
Glover G. Ms.	Con	609	61.8
Holden G. Ms.	Lab	269	27.3
Dobrashian T.	LD	107	10.9
Turnout		42.8	34.5

North Nailbourne (2130)

		vote	share
Cook S.	Con	569	49.1
Duplock G.	LD	271	23.4
Harper D.	Lab	156	13.5
Shirley E. Ms.	Green	106	9.2
Ellis-Roswell A.	Ind	56	4.8
Turnout		54.2	25.7

Northgate (4308)²

		vote	share
Baldock A.	Lab	528	40.0
Ellis D.*	Con	504	38.2
Matthews C. Ms.	Lab	495	-
Pickersgill S. Ms.	Con	460	-
Bailey J.	LD	288	21.8
Swain M.	LD	227	-
Turnout		31.6	1.8

Reculver (6986)³

		vote	share
Edwards J. Ms.	Con	1,665	45.7
Reuby G. Ms.*	Con	1,625	-
Taylor E. Ms.	Con	1,489	-
Rose P.	Ind	824	22.6
Brade-Dawkins K. Ms.	Lab	650	17.8
Belworthy E. Ms.	Lab	619	-
Fielon D.	Lab	598	-
Law I. Ms.	LD	508	13.9
Hando K.*	LD	498	-
Turnout		45.8	23.1

Seasalter (6217)³

		vote	share
Law J. Ms.*	Con	1,681	59.9
Sharp M.*	Con	1,610	-
Windsor C.*	Con	1,538	-
Cronin T.	Lab	773	27.5
Leslie I.	Lab	707	-
McLachlan W.	Lab	698	-
Hooker K.	LD	353	12.6
Mummery R. Ms.	LD	292	-
Mummery D.	LD	275	-
Turnout		47.3	32.3

St. Stephens (5204)³

		vote	share
Cragg R.	Con	1,112	42.6
Westgate T.	Con	1,039	-
Waters R.	Con	941	-
Blake N.	LD	912	34.9
Walker J.	LD	882	-
Ashton M.	LD	844	-
Fuller U. Ms.	Lab	588	22.5
Fenyo A.	Lab	545	-
Wilson S.	Lab	464	-
Turnout		50.1	7.7

Sturry North (2138)

		vote	share
Austin A.*	Con	435	47.1
Holden A.	Lab	379	41.0
Brumfit A. Ms.	LD	110	11.9
Turnout		43.4	6.1

Sturry South (2250)

		vote	share
Taylor H. Ms.*	Con	514	53.7
Butcher J. Ms.	Lab	212	22.1
Arter C.	LD	119	12.4
De Vert E. Ms.	Green	113	11.8
Turnout		43.1	31.5

Tankerton (3743)²

		vote	share
Harrison J. Ms.*	Con	1,010	50.7
Baker N.	Con	976	-
Sayer R.	LD	538	27.0
Ison J.	LD	454	-
Seath T.	Lab	444	22.3
Sullivan B.	Lab	432	-
Turnout		54.7	23.7

West Bay (4823)²

		vote	share
Lee P.*	Con	877	46.1
Byford S.	Con	870	-
Bright L. Ms.	LD	553	29.1
Parker J.	LD	495	-
Ayling B. Ms.	Lab	473	24.9
Edwards R.	Lab	430	-
Turnout		40.9	17.0

Westgate (6189)³

		vote	share
Flanagan J.*	LD	929	33.1
Linfield I. Ms.*	LD	858	-
Wood G.	LD	827	-
Stacey C.	Con	780	27.8
Bartley S.	Con	750	-
Tullett A.	Con	744	-
Butcher J. Ms.	Lab	693	24.7
Nee M.	Lab	575	-
Rowles H.	Lab	534	-
Godden E. Ms.	Green	403	14.4
Collins G.	Green	352	-
Page R.	Green	298	-
Turnout		44.2	5.3

Wincheap (6102)³

		vote	share
Eden-Green N.*	LD	1,286	50.7
Maccaul C. Ms.*	LD	1,228	-
Perkins A.*	LD	1,224	-
Manning C.	Lab	631	24.9
Smith H.	Con	618	24.4
Smith M. Ms.	Con	565	-
Mooney A.	Lab	564	-
Whyte J.	Lab	537	-
Smith S. Ms.	Con	508	-
Turnout		43.1	25.8

