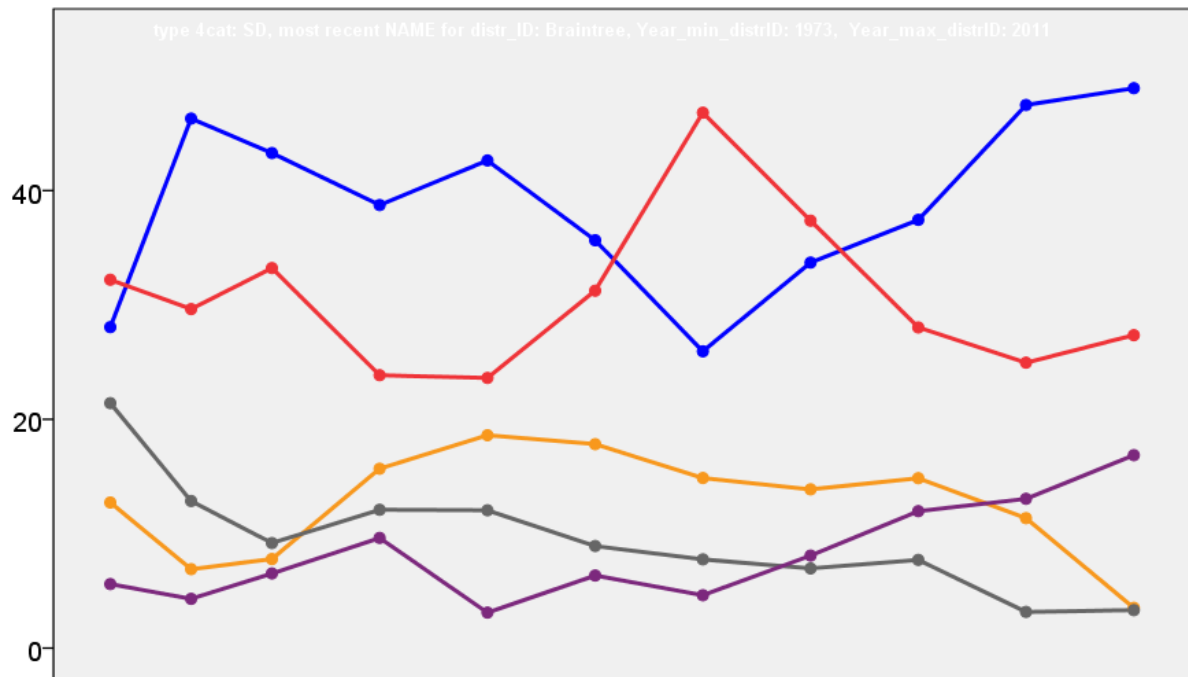


Braintree District Council Election Results 1973-2011



Colin Rallings and Michael Thrasher
The Elections Centre
Plymouth University

The information contained in this report has been obtained from a number of sources. Election results from the immediate post-reorganisation period were painstakingly collected by Alan Willis largely, although not exclusively, from local newspaper reports. From the mid-1980s onwards the results have been obtained from each local authority by the Elections Centre. The data are stored in a database designed by Lawrence Ware and maintained by Brian Cheal and others at Plymouth University. Despite our best efforts some information remains elusive whilst we accept that some errors are likely to remain. Notice of any mistakes should be sent to elections@plymouth.ac.uk. The results sequence can be kept up to date by purchasing copies of the annual Local Elections Handbook, details of which can be obtained by contacting the email address above.

Front cover: the graph shows the distribution of percentage vote shares over the period covered by the results. The lines reflect the colours traditionally used by the three main parties. The grey line is the share obtained by Independent candidates while the purple line groups together the vote shares for all other parties.

Rear cover: the top graph shows the percentage share of council seats for the main parties as well as those won by Independents and other parties. The lines take account of any by-election changes (but not those resulting from elected councillors switching party allegiance) as well as the transfers of seats during the main round of local election.

The lower graph shows for each main round of local elections the overall percentage turnout (solid line), the percentage of women candidates standing at (dotted line) and the percentage of women among those elected (hashed line).

Braintree - 1973

Black Notley (1188)

		vote	share
Mills E.	Con	269	57.0
Burden B.	Lab	142	30.1
Ward T.	Ind	61	12.9

Turnout 39.7 26.9

Bumpstead (1228)

		vote	share
Drapkin S.	Ind	381	77.9
Watson M.	Lab	63	12.9
King G.	Ind	45	9.2

Turnout 39.8 65.0

Castle Hedingham (1183)

		vote	share
Lynch J. Ms.	Lab	302	51.1
Barrington L. Ms.	Ind	289	48.9

Turnout 50.0 2.2

Coggeshall (3715)³

		vote	share
Sansom C.	Ind	660	40.0
Onions W.	Lib	614	37.2
Drake W. Ms.	Ind	469	-
McMillan W.	Ind	403	-
Potter C.	Ind	402	-
Brough L.	Ind	398	-
Dearman F.	Lab	378	22.9
Miles R. Ms.	Lab	375	-
Few R.	Ind	246	-

Turnout 44.5 2.8

Colne Engaine & Greenstead Green (1295)

		vote	share
Courtauld G.	Ind Con	344	58.7
Wilson E. Ms.	Ind	161	27.5
Plumb J.	Lab	81	13.8

Turnout 45.3 31.2

Cressing (1199)

		vote	share
Allan A.	Ind	194	54.3
Ratcliffe P.	Con	163	45.7

Turnout 29.8 8.7

Earls Colne (2062)²

		vote	share
Taylor P. Ms.	Ind	557	53.0
Dearsley L.	Ind	492	-
Walker M. Ms.	Con	375	35.7
Lock D.	Lab	118	11.2

Turnout 50.9 17.3

Gosfield (1054)

		vote	share
Seymour G.	Ind	207	51.8
Marlow D.	Ind	193	48.3

Turnout 38.0 3.5

Halstead Holy Trinity (3225)³

		vote	share
Cutting J.	Lab	889	56.0
Dixey R.	Lab	772	-
Bugbee N.	Lab	740	-
Graham R.	Lib	699	44.0

Turnout 49.2 12.0

Halstead St. Andrews (2796)²

		vote	share
McDowell E.	Res	646	39.4
Joyce O. Ms.	Con	584	35.7
Starling R.	Con	528	-
Gage M.	Res	491	-
Mayes R. Ms.	Lab	408	24.9
Jones K. Ms.	Lab	407	-

Turnout 58.6 3.8

Hatfield Peverel (2677)²

		vote	share
Leicester C.	Con	657	56.9
Claydon D.	Con	578	-
Gilbert J. Ms.	Lab	497	43.1
Deane A. Ms.	Lab	489	-

Turnout 43.1 13.9

Kelvedon (3072)³

		vote	share
Andrews B.	Con	761	46.7
De Denne Yule J.	Ind	613	37.6
Kentish B.	Ind	488	-
Edwards M.	Con	346	-
Crowe C.	Con	325	-
Hatton E.	Lab	257	15.8
Reekie J. Ms.	Lab	251	-
Young H.	Lab	250	-

Turnout 53.1 9.1

No. 1 (Braintree: East) (5008)⁴

		vote	share
Warren G.	Lab	877	42.7
Warren H.	Lab	829	-
Clarke W. Ms.	Lab	789	-
Dearman T.	Lab	771	-
Lobb A.	Con	569	27.7
Hammond M.	Con	517	-
Tyrell R.	Con	515	-
Brown L.	Lib	507	24.7
Vernon M. Ms.	Con	478	-
O'Hare B. Ms.	Comm	102	5.0

Turnout 41.0 15.0

No. 10 (Witham: Rivenhall South) (1672)²

		vote	share
Wicks D.	Lab	271	38.7
Edwards C. Ms.	Lab	233	-
Valentine J. Ms.	Ind	195	27.8
Sibley D.	Lib	140	20.0
Bond P.	TA	95	13.6
Jones S. Ms.	TA	93	-

Turnout 41.9 10.8

No. 11 (Witham: Central) (991)

		vote	share
Pitchforth H. Ms.	Ind	242	46.3
Richards K. Ms.	Con	217	41.5
Cudmore D. Ms.	Lib	37	7.1
Franklin D.	Lab	27	5.2

Turnout 52.8 4.8

No. 12 (Witham: South) (1445)

		vote	share
Howe J.	Lab	372	55.2
Cooper-Cocks M.	Ind	302	44.8

Turnout 46.6 10.4

No. 2 (Braintree: West) (4855)⁴

		vote	share
Ross J.	Lib	1,257	42.0
Collins M.	Lib	1,071	-
Harper S. Ms.	Con	1,030	34.4
Legg D.	Con	949	-
Everitt H.	Con	805	-
Kent P.	Lab	706	23.6
Church D.	Con	694	-
Baker L.	Lab	584	-
Hearn B.	Lab	535	-
Pryke J.	Lab	512	-

Turnout 61.6 7.6

No. 3 (Bocking: North) (3530)³

		vote	share
Everard A.	Lab	853	59.0
Hounsell S.	Lab	778	-
Millam A.	Lab	715	-
Lewis M. Ms.	Con	592	41.0
Illingworth M.	Con	590	-
Wyatt A.	Con	553	-

Turnout 40.9 18.1

No. 4 (Bocking: South) (5566)⁴

		vote	share
Warne G.	Lab	1,403	45.3
Suckling R.	Lab	1,205	-
Watson R.	Lab	1,116	-
Mackenzie A.	Lab	1,031	-
Goddard L. Ms.	Lib	889	28.7
Margetts W.	Lib	839	-
Comfort A. Ms.	Con	804	26.0
Ireson J.	Con	638	-
Overfield J.	Con	612	-
Murcott C.	Con	602	-

Turnout 55.6 16.6

No. 7 (Witham: West) (3238)²

		vote	share
Kinloch I.	Ind	488	38.7
Shortridge W.	Ind	416	-
Clampin D.	Lab	324	25.7
Keeling J.	Lab	310	-
Willets D.	Con	210	16.7
Lager M.	Con	195	-
Sadler M. Ms.	Lib	137	10.9
Brown F.	Comm	101	8.0

Turnout 38.9 13.0

No. 8 (Witham: North) (3631)²

		vote	share
Smith S.	Lab	574	44.6
Bentley A.	Lab	568	-
Sweeting J.	Ind	335	26.0
Gibbs G. Ms.	Con	206	16.0
Sullivan I. Ms.	TA	173	13.4
Gibbs P.	Con	161	-
Lowry B.	TA	159	-

Turnout 35.5 18.6

No. 9 (Witham: Rivenhall North) (1913)²

		vote	share
Bartlett R.	Lab	526	54.0
Lyon J. Ms.	Lab	484	-
Wallace N.	Con	448	46.0
Cutmore P.	Con	339	-

Turnout 50.9 8.0

Panfield (1167)

		vote	share
Chandler R.	Con	282	52.4
Budge R.	Lab	256	47.6

Turnout 46.1 4.8

Rayne (1274)

		vote	share
Carder R.	Ind	261	64.0
Locke K.	Lab	147	36.0

Turnout 32.0 27.9

Sible Hedingham (2413)²

		vote	share
Tanner G.	Ind	544	36.5
Belither P. Ms.	Con	518	34.8
Waldron J.	Lab	428	28.7
Snarey E.	Lab	217	-

Turnout 61.7 1.7

Stour Valley Central (1123)

		vote	share
Nott K.	Con	375	71.4
Tolliday L. Ms.	Lab	150	28.6

Turnout 46.7 42.9

Stour Valley North (1107)

		vote	share
Powell E.	Ind	365	75.6
Ellis P. Ms.	Lab	118	24.4

Turnout 43.6 51.1

Stour Valley South (1326)

		vote	share
Abinger J.	Con	338	47.9
Nott G.	Ind	335	47.5
Andrews M.	Lab	32	4.5

Turnout 53.2 0.4

Terling (1248)			
		vote	share
Isted G.	Con	364	64.5
Foy C.	Lab	200	35.5
Turnout		45.2	29.1

Three Fields (2420)²			
		vote	share
Hawkins R.	Con	443	39.4
Sebag-Montefiore O.	Con	357	-
Nottage J.	Ind	354	31.5
Crossman W.	Ind	342	-
Gray E. Ms.	Lab	327	29.1
Cox E.	Ind	231	-
Westwood C.	Lab	221	-
Bowen Roberts J. Ms.	Ind	162	-
Turnout		46.4	7.9

Upper Colne (1238)			
		vote	share
Johnson D.	Con	511	67.1
Watson G. Ms.	Lab	250	32.9
Turnout		61.5	34.3

Yeldham (1225)			
		vote	share
Innes P.	Ind Con	269	34.5
Cohen J. Ms.	Comm	208	26.7
Elliott W. Ms.	Lab	174	22.3
Wilson R.	Lib	129	16.5
Turnout		63.7	7.8

Braintree - 1976

Black Notley (1185)			
		vote	share
Mills E.*	Con	369	74.2
Hall J.	Lab	128	25.8
Turnout		43.0	48.5

Bumpstead (1210)			
		vote	share
Drapkin S.	Con	0	0.0
Turnout		0.0	0.0

Castle Hedingham (1271)			
		vote	share
Hipkins L.	Con	376	45.4
Lynch J. Ms.*	Lab	304	36.7
Brown L.	Rad Lib	148	17.9
Turnout		65.8	8.7

Coggeshall (3673)³			
		vote	share
McMillan D.	Con	857	34.6
Smith B.	Con	814	-
Drake W. Ms.*	Ind	597	24.1
Onions W.*	Lib	553	22.3
Causton C. Ms.	Lab	473	19.1
Smith B.	Lab	454	-
Simpson D.	Lab	381	-
Sibley D.	Lib	339	-
Turnout		48.0	10.5

Colne Engaine & Greenstead Green (1303)			
		vote	share
Courtauld G.*	Ind Con	0	0.0
Turnout		0.0	0.0

Cressing (1179)			
		vote	share
Yockney E. Ms.	Con	271	49.9
Allen A.*	Ind	154	28.4
Hills M.	Lab	118	21.7
Turnout		46.1	21.5

Earls Colne (2033)²			
		vote	share
Dearsley L.*	Ind	600	68.9
Taylor P. Ms.	Ind	588	-
Turp R.	Lab	271	31.1
Turnout		57.3	37.8

Gosfield (1040)			
		vote	share
Marlow D.	Ind	349	55.9
Brooks B.	Con	275	44.1
Turnout		60.1	11.9

Halstead Holy Trinity (3451)³			
		vote	share
Mayes R. Ms.	Lab	765	38.6
Jones K. Ms.	Lab	696	-
Covell C.	Con	670	33.8
Bugbee N.*	Lab	572	-
Fuller D.	Res	549	27.7
Turnout		52.3	4.8

Halstead St. Andrews (2954)²			
		vote	share
McDowell E.*	Res	684	45.8
Joyce O. Ms.*	Con	543	36.4
Starling E.	Con	503	-
Gage M.	Res	494	-
Bird A.	Lab	265	17.8
Brede D.	Lab	261	-
Turnout		55.0	9.5

Hatfield Peverel (2671)²			
		vote	share
Leicester C.*	Con	806	48.5
Claydon D.*	Con	770	-
Voysey M.	Ind	569	34.2
Deane O. Ms.	Lab	287	17.3
Williams P.	Lab	237	-
Turnout		54.8	14.3

Kelvedon (3036)³			
		vote	share
Andrews B.*	Ind	920	47.3
Edwards M.	Con	690	35.5
De J. Denne Yule*	Ind	663	-
Kentish B.*	Ind	606	-
Howard A.	Con	488	-
Openshaw D.	Con	465	-
Bennett A.	Lab	333	17.1
Wicks D.	Lab	324	-
Turnout		55.5	11.8

No. 1 (Braintree: East) (5059)⁴			
		vote	share
Adams P.	Con	993	52.9
Chapman J. Ms.	Con	967	-
Haley J.	Con	953	-
Platt D.	Con	946	-
Warren G.*	Lab	884	47.1
Warren H.*	Lab	844	-
Clarke W. Ms.*	Lab	827	-
Kerlogue I. Ms.	Lab	779	-
Turnout		38.9	5.8

No. 10 (Witham: Rivenhall South) (1621)²			
		vote	share
Richards K. Ms.	Con	325	51.6
Edwards C. Ms.*	Lab	305	48.4
Edwards R.	Lab	286	-
Turnout		56.5	3.2

No. 11 (Witham: Central) (1013)			
		vote	share
Pitchforth H. Ms.*	Ind	339	58.1
Gibbs P.	Con	206	35.3
Oliver D.	Lab	38	6.5
Turnout		57.7	22.8

No. 12 (Witham: South) (1776)			
		vote	share
Howe J.*	Lab	475	55.5
Stead T.	Con	381	44.5
Turnout		48.2	11.0

No. 2 (Braintree: West) (4883)⁴			
		vote	share
Harper S. Ms.*	Con	1,389	42.4
Legg D.*	Con	1,272	-
Ross J.*	Lib	1,229	37.5
Everitt H.	Con	1,203	-
Harvey D.	Lib	1,104	-
Murcott C.	Con	1,020	-
Keggen G.	Lab	657	20.1
Lynch E.	Lab	640	-
Childs F.	Lab	560	-
Skirvington M.	Lab	528	-
Turnout		55.7	4.9

No. 3 (Bocking: North) (3786)³			
		vote	share
Davis E.	Con	939	53.1
Tregaron M.	Con	935	-
Cross A.	Con	903	-
Everard A.*	Lab	831	46.9
Millam A.*	Lab	746	-
Watson R.	Lab	711	-
Turnout		49.3	6.1

No. 4 (Bocking: South) (6302)⁴			
		vote	share
Comfort A. Ms.	Con	1,298	44.9
Perkin R.	Con	1,238	-
Davis R.	Con	1,164	-
Adcock T.	Con	1,109	-
Warne G.*	Lab	1,090	37.7
Perks J.	Lab	1,040	-
Suckling R.*	Lab	1,000	-
Mackenzie A.*	Lab	827	-
Colchester D. Ms.	Lib	503	17.4
Meech B.	Lib	479	-
Turnout		42.9	7.2

No. 7 (Witham: West) (3966)²			
		vote	share
Willetts D.	Con	935	59.2
Lager M.	Con	888	-
Hatton E.	Lab	500	31.7
Hatton J. Ms.	Lab	428	-
Brown F.	Comm	144	9.1
Turnout		40.2	27.5

No. 8 (Witham: North) (3774)²			
		vote	share
Bentley A.*	Lab	688	55.0
Smith S.*	Lab	668	-
Quick E. Ms.	Con	563	45.0
Mansbridge F.	Con	552	-
Turnout		35.4	10.0

No. 9 (Witham: Rivenhall North) (2254)²			
		vote	share
Lyon J. Ms.*	Lab	655	53.5
Bartlett R.*	Lab	601	-
Cutmore P.	Con	569	46.5
Pembroke A.	Con	559	-
Turnout		56.9	7.0

Panfield (1136)			
		vote	share
Chandler R.*	Con	399	59.3
Evans C.	Lab	274	40.7
Turnout		59.7	18.6

Rayne (1491)			
		vote	share
Crossman C.	Con	517	65.4
Little F.	Lib	158	20.0
Locke K.*	Lab	115	14.6
Turnout		53.1	45.4

Sible Hedingham (2325)²			
		vote	share
Tanner G.*	Ind	787	46.2
Hall H. Ms.	Con	719	42.2
Funnell C.	Lab	198	11.6
Gray E. Ms.	Lab	166	-
Turnout		41.2	4.0

Stour Valley Central (1095)			
		vote	share
Nott K.*	Con	431	77.9
Wallis P. Ms.	Lab	122	22.1
Turnout		50.6	55.9

Stour Valley North (1051)			
		vote	share
Basham C.	Con	0	0.0
Turnout		0.0	0.0

Stour Valley South (1434)			
		vote	share
Clark R. Ms.	Con	506	68.1
Champion A. Ms.	Ind	237	31.9
Turnout		51.8	36.2

Terling (1239)			
		vote	share
Isted G.*	Con	425	78.0
Foy C.	Lab	120	22.0
Turnout		44.1	56.0

Three Fields (2473)²			
		vote	share
Hawkins R.*	Con	941	61.1
Sebag-Montefiore O.*	Con	856	-
Hildrey G.	Lab	599	38.9
Turnout		60.0	22.2

Upper Colne (1223)			
		vote	share
Johnson D.*	Con	0	0.0
Turnout		0.0	0.0

Yeldham (1228)			
		vote	share
Liming R.	Con	0	0.0
Turnout		0.0	0.0

Braintree - 1979

Black Notley (1412)			
		vote	share
Mills E.	Con	821	75.3
Beardwell D.	Lab	270	24.7
Turnout		75.8	50.5

Bocking North (4207)³			
		vote	share
Millam A.	Lab	1,569	51.6
Hall J.	Lab	1,514	-
Davis E.	Con	1,470	48.4
Sheret C.	Lab	1,441	-
Steel B.	Con	1,428	-
Brown S.	Con	1,407	-
Turnout		75.0	3.3

Bocking South (4341)³			
		vote	share
Warne G.	Lab	1,753	54.6
Mackenzie A.	Lab	1,568	-
Watson R.	Lab	1,548	-
Comfort A. Ms.	Con	1,456	45.4
Perkin R.	Con	1,408	-
Adcock T.	Con	1,396	-
Turnout		75.1	9.3

Braintree Central (4265)³			
		vote	share
Warren G.	Lab	1,683	55.3
Perks J.	Lab	1,594	-
Shirvington M.	Lab	1,560	-
Britten B.	Con	1,363	44.7
Sayers D.	Con	1,338	-
Moll J.	Con	1,277	-
Turnout		73.9	10.5

Braintree East (4567)³			
		vote	share
Gilthorpe P. Ms.	Con	1,399	41.5
Amies J.	Con	1,331	-
Plumb A.	Con	1,310	-
Oliver M.	Lab	1,097	32.5
Oliver C. Ms.	Lab	1,079	-
Woollard P.	Lab	1,004	-
Allen R.	Lib	875	26.0
Webb K. Ms.	Lib	820	-
Hamlin I.	Lib	814	-
Turnout		76.0	9.0

Braintree West (4629)³			
		vote	share
Ross J.	Lib	1,881	47.9
Bryan J.	Lib	1,654	-
Harper S. Ms.	Con	1,482	37.7
Farnell P.	Lib	1,460	-
Everitt H.	Con	1,350	-
Murcott C.	Con	1,254	-
Gore M.	Lab	563	14.3
Green D.	Lab	487	-
Turnout		79.7	10.2

Bumpstead (1276)			
		vote	share
Drapkin S.	Con	0	0.0
Turnout		0.0	0.0

Castle Hedingham (1334)			
		vote	share
Schwier P.	Con	592	54.6
Lynch J. Ms.	Lab	493	45.4
Turnout		79.6	9.1

Coggeshall (3727)³			
		vote	share
Drake W. Ms.	Ind	1,554	33.0
Bellamy D.	Con	1,438	30.5
McMillan D.	Con	1,397	-
Portway H.	Con	1,132	-
Sibley D.	Lib	897	19.0
McCracken A.	Lab	827	17.5
Turnout		79.5	2.5

Colne Engaine & Greenstead Green (1314)			
		vote	share
Courtauld G.	Ind Con	0	0.0
Turnout		0.0	0.0

Cressing (1212)			
		vote	share
Chapman J.	Lib	357	38.2
Yockney E. Ms.	Con	336	36.0
Allen A.	Ind	241	25.8
Turnout		76.6	2.2

Earls Colne (2278)²			
		vote	share
Holmes C.	Ind	995	44.8
Taylor P. Ms.	Ind	628	-
Bird R.	Ind Lib	484	21.8
Allsopp T. Ms.	Con	425	19.1
Long M. Ms.	Con	408	-
Jarrett M.	Lab	316	14.2
Turp R.	Lab	298	-
Turnout		79.7	23.0

Gosfield (1060)			
		vote	share
Marlow D.	Ind	0	0.0
Turnout		0.0	0.0

Halstead Holy Trinity (3596)³			
		vote	share
McDowell E.	Res	1,548	38.8
Mayes R. Ms.	Lab	1,423	35.7
Bugbee N.	Lab	1,209	-
Finken M.	Lab	1,023	-
Covell C.	Con	1,018	25.5
Thompson D. Ms.	Con	921	-
Turnout		78.4	3.1

Halstead St. Andrews (3153)²			
		vote	share
Gage M.	Res	1,249	40.6
Joyce O. Ms.	Con	1,150	37.4
Mitchell J.	Con	727	-
Jones K. Ms.	Lab	677	22.0
Atherton J.	Lab	592	-
Turnout		77.2	3.2

Hatfield Peverel (2950)²			
		vote	share
Leicester C.	Con	1,467	67.3
Claydon D.	Con	1,404	-
Deane O. Ms.	Lab	713	32.7
Brooke J.	Lab	670	-
Turnout		77.0	34.6

Kelvedon (2995)³			
		vote	share
Edwards M.	Con	1,233	35.9
Clarke E.	Con	1,171	-
De Denne Yule J.	Ind	1,083	31.6
Gibbs S.	Con	861	-
Sherratt B.	Lab	707	20.6
Rogers D.	Lab	693	-
Sherratt R. Ms.	Lab	690	-
Crowe P.	Ind Con	408	11.9
Turnout		80.3	4.4

Panfield (1205)			
		vote	share
Chandler R.	Con	735	74.8
Burden B.	Lab	247	25.2
Turnout		82.0	49.7

Rayne (1707)			
		vote	share
Crossman C.	Con	1,017	74.2
Hall E. Ms.	Lab	353	25.8
Turnout		79.4	48.5

Sible Hedingham (2430)²			
		vote	share
Tanner G.	Ind	0	0.0
Hall H. Ms.	Con	0	0.0
Turnout		0.0	0.0

Stour Valley Central (1161)			
		vote	share
Nott K.	Con	0	0.0
Turnout		0.0	0.0

Stour Valley North (1095)			
		vote	share
Basham C.	Con	0	0.0
Turnout		0.0	0.0

Stour Valley South (1457)			
		vote	share
Clark R. Ms.	Con	0	0.0
Turnout		0.0	0.0

Terling (1243)			
		vote	share
Isted G.	Con	720	73.8
Ness J. Ms.	Lab	255	26.2
Turnout		76.7	47.7

Three Fields (2601) ²			
		vote	share
Hawkins R.	Con	1,183	44.9
Platt D.	Con	951	-
Finbow J.	Ind	825	31.3
Dyson J. Ms.	Lab	627	23.8
Turnout		79.0	13.6

Upper Colne (1262)			
		vote	share
Johnson D.	Con	0	0.0
Turnout		0.0	0.0

Witham Central (1569)			
		vote	share
Pitchforth H. Ms.	Ind	742	59.3
Mills J.	Con	371	29.7
Randall L.	Lab	138	11.0
Turnout		75.8	29.7

Witham Chipping Hill (2719) ²			
		vote	share
Slowman A.	Lab	1,091	52.0
Richards K. Ms.	Con	1,007	48.0
Sabin D.	Lab	891	-
Dowding J.	Con	870	-
Turnout		77.5	4.0

Witham North (3570) ³			
		vote	share
Edwards C. Ms.	Lab	1,402	54.2
Boshell B. Ms.	Lab	1,335	-
Fraser M. Ms.	Lab	1,290	-
Ager A. Ms.	Con	1,183	45.8
Sheppard T.	Con	1,150	-
Williams D.	Con	1,056	-
Turnout		76.0	8.5

Witham Silver End & Rivenhall (2654) ²			
		vote	share
Evans J. Ms.	Lab	1,168	54.4
Lyon J. Ms.	Lab	1,153	-
Cutmore P. Ms.	Con	979	45.6
Digby P.	Con	864	-
Turnout		80.6	8.8

Witham South (3896) ²			
		vote	share
Cooke J. Ms.	Con	1,170	40.2
Boylan K.	Lab	1,140	39.1
Boshell B.	Lab	1,123	-
Smith B.	Con	1,109	-
Bigg D.	Lib	603	20.7
Bigg A. Ms.	Lib	494	-
Turnout		75.9	1.0

Witham West (2421) ²			
		vote	share
Lager M.	Con	1,000	51.8
Gibbs P.	Con	999	-
Green R.	Lab	757	39.2
Brown F.	Comm	173	9.0
Turnout		74.4	12.6

Yeldham (1249)			
		vote	share
Yeldham J.	Con	614	60.3
Newton T.	Lab	405	39.7
Turnout		80.9	20.5

Braintree - 1983

Black Notley (1873)			
		vote	share
Mills E.*	Con	497	54.6
Turner P.	Lib/SDP	301	33.0
Hooper E. Ms.	Lab	113	12.4
Turnout		48.6	21.5

Bocking North (4228) ³			
		vote	share
Mann D.	Lab	1,049	45.9
Millam A.*	Lab	963	-
Allard M.	Lab	947	-
Comfort A. Ms.	Con	905	39.6
Matthewman P.	Con	851	-
Bols A.	Con	842	-
Perkin R.	Ind	331	14.5
Turnout		54.0	6.3

Bocking South (4477) ³			
		vote	share
Warne G.*	Lab	1,120	50.3
Watson R.*	Lab	921	-
Mackenzie A.*	Lab	897	-
Ware M.	Con	742	33.3
Bourne H.	Con	706	-
Brown S.	Con	689	-
Purdy J.	Lib/SDP	365	16.4
Mayhew D.	Lib/SDP	308	-
O'Reilly J.	Lib/SDP	300	-
Turnout		49.7	17.0

Braintree Central (4442) ³			
		vote	share
Warren G.*	Lab	848	46.6
Keeble R.	Lab	768	-
Perks J.*	Lab	743	-
Harrington J.	Con	605	33.2
Sayers D.	Con	566	-
Grice J. Ms.	Lib/SDP	367	20.2
Turnout		41.0	13.4

Braintree East (4694) ³			
		vote	share
Gilthorpe P. Ms.*	Con	801	47.2
Amies J.*	Con	783	-
Plumb A.*	Con	753	-
Choate D.	Lib/SDP	491	28.9
Higby S.	Lab	405	23.9
Seymore S.	Lib/SDP	378	-
Sains A. Ms.	Lab	375	-
Sains P.	Lab	362	-
Turnout		36.2	18.3

Braintree West (4611) ³			
		vote	share
Bryan M.*	Lib/SDP	1,441	55.7
Ross J.*	Lib/SDP	1,419	-
Margetts B.	Lib/SDP	1,327	-
Harper S. Ms.*	Con	1,144	44.3
Britten B.	Con	1,068	-
Everitt H.	Con	952	-
Turnout		56.1	11.5

Bumpstead (1410)			
		vote	share
Knight I. Ms.	Con	557	82.2
Giles S.	Lab	121	17.8
Turnout		48.1	64.3

Castle Hedingham (1356)			
		vote	share
Poulton J.	Con	0	0.0
Turnout		0.0	0.0

Coggeshall (3804) ³			
		vote	share
Bellamy D.*	Con	873	32.5
Drake W. Ms.*	Ind	855	31.8
Burroughs D.	Con	729	-
Trapp M.	Con	691	-
Keeling P.	Lib/SDP	610	22.7
Papworth C.	Lib/SDP	573	-
Sibley D.	Lib/SDP	479	-
Tant T.	Lab	348	13.0
Turnout		70.6	0.7

Colne Engaine & Greenstead Green (1383)			
		vote	share
Courtauld G.*	Ind Con	586	85.3
Jarratt M.	Lab	101	14.7
Turnout		49.7	70.6

Cressing (1229)			
		vote	share
Flint L. Ms.	Con	302	51.3
Sweeting R.	Lib/SDP	152	25.8
Green D.	Lab	135	22.9
Turnout		47.9	25.5

Earls Colne (2448) ²			
		vote	share
Holmes C.*	Ind	0	-
Boyce S. Ms.	Ind	0	0.0
Turnout		0.0	0.0

Gosfield (1081)			
		vote	share
Marlow D.*	Ind	0	0.0
Turnout		0.0	0.0

Halstead Holy Trinity (3711) ³			
		vote	share
McDowell R.*	Res	874	33.1
Mayer R. Ms.*	Lab	860	32.5
Fincken M.	Lab	660	-
Gordon H. Ms.	Lab	548	-
Norfolk J.	Con	534	20.2
Pike J.	Con	502	-
Bird T.	Lib/SDP	376	14.2
Turnout		71.2	0.5

Halstead St. Andrews (3272) ²			
		vote	share
Gage M.*	Res	996	47.1
Covell J.	Con	692	32.7
Denton C.	Con	431	-
Fuller D.	Lib/SDP	428	20.2
Turnout		64.7	14.4

Hatfield Peverel (3072) ²			
		vote	share
Voysey M.	Ind	662	42.2
Dyson D.	Ind	519	-
Bigden K.	Con	457	29.1
Lawrence K.	Con	393	-
Livermore C.	Lib/SDP	332	21.2
O'Brien P.	Lib/SDP	242	-
Cardy P.	Lab	118	7.5
Brook J.	Lab	87	-
Turnout		51.1	13.1

Kelvedon (3057) ³			
		vote	share
Clarke G.*	Con	925	41.9
Edwards M.*	Con	826	-
Yule J.*	Ind	658	29.8
Sach T.	Con	577	-
Marshall I.	Lab	390	17.7
Rogers D.	Lab	342	-
Ness J. Ms.	Lab	275	-
Edwards H. Ms.	Lib/SDP	233	10.6
Papworth J. Ms.	Lib/SDP	138	-
Webb K. Ms.	Lib/SDP	102	-
Turnout		72.2	12.1

Panfield (1201)			
		vote	share
Willey M.	Con	0	0.0
Turnout		0.0	0.0

Rayne (1817)			
		vote	share
Moore T.	Con	540	51.2
Meadows T.	Lib/SDP	514	48.8
Turnout		58.0	2.5

Sible Hedingham (2489) ²			
		vote	share
Tanner R.*	Ind	551	56.6
Disley J. Ms.	Con	422	43.4
Choppin J.	Ind	338	-
Brett J.	Ind	231	-
Waldron J.	Ind	212	-
Turnout		39.1	13.3

Stour Valley Central (1218)			
		vote	share
Nott R.*	Con	0	0.0
	Turnout	0.0	0.0
Stour Valley North (1095)			
		vote	share
Hall M.	Con	0	0.0
	Turnout	0.0	0.0
Stour Valley South (1541)			
		vote	share
Twinn J. Ms.	Con	665	79.1
Hill L. Ms.	Lab	176	20.9
	Turnout	54.6	58.1
Terling (1259)			
		vote	share
Isted G.*	Ind	309	46.3
Burt B.	Con	272	40.8
Bates K. Ms.	Lab	86	12.9
	Turnout	53.0	5.5
Three Fields (2569)²			
		vote	share
Hawkins R.*	Con	886	46.9
Platt D.*	Con	698	-
Finbow J.	Ind	658	34.9
Hennings Y. Ms.	Lab	344	18.2
	Turnout	73.5	12.1
Upper Colne (1253)			
		vote	share
Johnson D.*	Con	0	0.0
	Turnout	0.0	0.0
Witham Central (1623)			
		vote	share
Pitchforth H. Ms.*	Ind	420	47.8
Allan J.	Con	330	37.6
Sabin M. Ms.	Lab	82	9.3
Farrow B. Ms.	WRFC	46	5.2
	Turnout	54.1	10.3
Witham Chipping Hill (2916)²			
		vote	share
Richards K. Ms.*	Con	585	40.8
Carpenter V. Ms.	Con	504	-
Randall L.	Lab	381	26.6
Smith K. Ms.	Lab	337	-
Slowman A.*	Lib/SDP	240	16.7
Frost S.	WRFC	228	15.9
	Turnout	49.2	14.2
Witham North (3708)³			
		vote	share
Gyford J. Ms.	Lab	642	48.1
Pointon I.	Lab	546	-
Tracey M.	Lab	533	-
Collard P.	Con	435	32.6
Scott H.	Con	431	-
Stote T.	Con	396	-
Smith R.	WRFC	259	19.4
Muffet F.	WRFC	254	-
Canter M.	WRFC	249	-
	Turnout	36.0	15.5
Witham Silver End & Rivenhall (2929)²			
		vote	share
Lyon J. Ms.*	Lab	944	64.0
Evans J. Ms.*	Lab	919	-
Cutmore P. Ms.	Con	530	36.0
Speakman J. Ms.	Con	445	-
	Turnout	50.3	28.1

Witham South (4095)²			
		vote	share
Pluthero J. Ms.	Con	632	36.1
Gibbs G. Ms.	Con	575	-
Boylan K.*	Lab	540	30.8
Sabin D.	Lab	528	-
Hammond L.	WRFC	366	20.9
Marsh B.	WRFC	353	-
Bigg D.	Lib/SDP	214	12.2
Bigg A. Ms.	Lib/SDP	158	-
	Turnout	42.8	5.3
Witham West (3016)²			
		vote	share
Lager M.*	Con	642	45.0
Gibbs P.*	Con	589	-
Pay R.	Lab	417	29.2
Clark J.	WRFC	367	25.7
Wilson E.	Lab	325	-
	Turnout	47.3	15.8
Yeldham (1300)			
		vote	share
Yeldham J.*	Con	0	0.0
	Turnout	0.0	0.0

Braintree - 1987

Black Notley (2272)			
		vote	share
Turner P.	Lib/SDP	702	51.4
Clarke C.	Con	598	43.8
Kerlogue E.	Lab	65	4.8
	Turnout	60.1	7.6
Bocking North (4324)³			
		vote	share
Mann D.*	Lab	980	48.8
Millam A.*	Lab	971	-
Allard M.*	Lab	932	-
Britton D.	Con	727	36.2
Hutton L.	Con	704	-
Potter I.	Con	682	-
Hasel W.	Lib/SDP	302	15.0
Davies R.	Lib/SDP	287	-
Knott D.	Lib/SDP	270	-
	Turnout	46.5	12.6
Bocking South (4493)³			
		vote	share
Warne G.*	Lab	1,181	48.4
Mackenzie A.*	Lab	1,019	-
Martin J.	Lab	990	-
Lee I.	Con	850	34.8
Potter H.	Con	828	-
Simpson V.	Con	757	-
Hughes S. Ms.	Lib/SDP	409	16.8
Seymour H. Ms.	Lib/SDP	354	-
Sherlock L.	Lib/SDP	331	-
	Turnout	54.3	13.6
Braintree Central (4742)³			
		vote	share
Warren G.*	Lab	823	43.1
Keeble R.*	Lab	739	-
Perks J.*	Lab	729	-
Churly J.	Con	608	31.8
Aguallo M.	Con	607	-
Davis B.	Con	596	-
Grice J. Ms.	Lib/SDP	478	25.0
Stock C.	Lib/SDP	452	-
Bignold J. Ms.	Lib/SDP	452	-
	Turnout	40.3	11.3

Braintree East (5135)³			
		vote	share
Amies J.*	Con	903	42.7
Plumb A.*	Con	853	-
Gilthorpe P. Ms.*	Con	836	-
Seymour S.	Lib/SDP	687	32.5
Baverstock A.	Lib/SDP	680	-
Braley P.	Lib/SDP	677	-
Phillips W. Ms.	Lab	527	24.9
Green D.	Lab	487	-
Shirvington M.	Lab	471	-
	Turnout	41.2	10.2
Braintree West (4777)³			
		vote	share
Rice D.	Lib/SDP	1,272	47.8
Allison A.	Lib/SDP	1,258	-
Cavinder R.	Lib/SDP	1,244	-
Davis R.	Con	1,043	39.2
Churcher R.	Con	1,040	-
Dawes R.	Con	970	-
Warren B.	Lab	344	12.9
Morgan P.	Lab	314	-
Faulkner D.	Lab	294	-
	Turnout	55.7	8.6
Bumpstead (1567)			
		vote	share
Parfitt P.	Con	0	0.0
	Turnout	0.0	0.0
Castle Hedingham (1392)			
		vote	share
Clements M.	Lib/SDP	461	53.9
Compson J.	Con	395	46.1
	Turnout	61.5	7.7
Coggeshall (3954)³			
		vote	share
Trapp M.	Con	984	31.7
Drake W. Ms.*	Ind	956	30.8
Pyle-Howard B.	Con	818	-
Langdale A. Ms.	Con	811	-
Coles K.	Lib/SDP	689	22.2
Overnell J.	Lab	475	15.3
Anderson G.	Lab	440	-
Brisbane S. Ms.	Lab	387	-
	Turnout	78.5	0.9
Colne Engaine & Greenstead Green (1236)			
		vote	share
Fossick W.	Con	528	79.5
McGillivray P.	Lab	136	20.5
	Turnout	53.7	59.0
Cressing (1220)			
		vote	share
Flint L. Ms.*	Con	423	72.6
Tew G. Ms.	Lab	160	27.4
	Turnout	47.8	45.1
Earls Colne (2723)²			
		vote	share
Boyce S. Ms.*	Ind	834	63.4
Macey J.	Ind	699	-
Brunning P.	Con	481	36.6
	Turnout	48.3	26.8
Gosfield (1117)			
		vote	share
Marlow D.*	Ind	487	75.5
Thomas J.	Con	158	24.5
	Turnout	57.7	51.0

Halstead Holy Trinity (3405) ³			
		vote	share
Mayes R. Ms.*	Lab	716	32.9
Pell J. Ms.	Res	674	30.9
McDowell E.*	Res	554	-
Fincken M.*	Lab	520	-
Garlick R.	Con	426	19.6
Vanlint C.	Lab	412	-
Pike J.	Con	393	-
Bird A.	Lib/SDP	362	16.6
Scurlock M.	Con	311	-
Turnout		64.0	1.9

Halstead St. Andrews (3809) ²			
		vote	share
De Frates A.	Res	735	40.8
Gage M.*	Res	650	-
Covell C.*	Con	550	30.6
Jermyn N.	Lab	294	16.3
Jones D.	Lab	271	-
Denton C.	Con	230	-
Fuller D.	Lib/SDP	221	12.3
Turnout		47.3	10.3

Hatfield Peveler (3321) ²			
		vote	share
Bigden K.	Con	850	49.0
Bird J. Ms.	Con	683	-
Royffe E. Ms.	Ind	514	29.7
Howard A.	Ind	441	-
Miller M.	All	283	16.3
Livermore C.	All	239	-
Hearn F.	Lab	86	5.0
Fyfe T. Ms.	Lab	80	-
Turnout		52.2	19.4

Kelvedon (3388) ³			
		vote	share
Yule J.*	Ind	1,094	35.2
Kimberley G.	Con	1,067	34.4
Savill A.	Con	1,040	-
Marshall I.	Lab	518	16.7
Bing S.	Lib/SDP	426	13.7
Fisher A.	Lab	416	-
Fyfe J.	Lab	397	-
Maynard G.	Lib/SDP	326	-
Turnout		91.6	0.9

Panfield (1286)			
		vote	share
Overall A.	Ind	406	54.9
Bloomfield M.	Con	252	34.1
Weaver A.	Lab	81	11.0
Turnout		57.5	20.8

Rayne (1860)			
		vote	share
Moore A.*	Con	555	49.2
Meadows A.	Lib/SDP	508	45.1
Johnson P.	Lab	64	5.7
Turnout		60.6	4.2

Sible Hedingham (2548) ²			
		vote	share
Choppin J.	Ind	505	51.1
Disley J. Ms.*	Con	484	48.9
Pennington G.	Con	449	-
Turnout		38.8	2.1

Stour Valley Central (1230)			
		vote	share
Nott K.*	Con	0	0.0
Turnout		0.0	0.0

Stour Valley North (1130)			
		vote	share
Hall M.*	Con	524	77.6
Kotz J.	Lab	151	22.4
Turnout		59.7	55.3

Stour Valley South (1664)			
		vote	share
Twinn J. Ms.*	Con	713	79.1
Hill L. Ms.	Lab	188	20.9
Turnout		54.1	58.3

Terling (1281)			
		vote	share
Hodson R.	Con	481	77.7
Tant A.	Lab	138	22.3
Turnout		48.3	55.4

Three Fields (2769) ²			
		vote	share
Hawkins R.*	Con	1,216	77.6
Finbow J.	Con	1,197	-
Hennings Y. Ms.	Lab	351	22.4
Lloyd M.	Lab	268	-
Turnout		56.6	55.2

Upper Colne (1267)			
		vote	share
Johnson D.*	Con	555	75.1
Smith P.	Lab	184	24.9
Turnout		58.3	50.2

Witham Central (1756)			
		vote	share
Pitchforth H. Ms.*	Ind	470	51.8
Foster W.	Con	357	39.3
Wilson J.	Lab	81	8.9
Turnout		51.7	12.4

Witham Chipping Hill (3086) ²			
		vote	share
Richards K. Ms.*	Con	604	38.3
Carpenter V. Ms.*	Con	515	-
Wilson E.	Lab	482	30.6
Pay R.	Lab	433	-
Allen R.	Lib/SDP	280	17.8
Fleet B.	Lib/SDP	272	-
Berry R.	Ind	209	13.3
Turnout		51.0	7.7

Witham North (3884) ³			
		vote	share
Gyford J. Ms.*	Lab	707	50.4
Farrow B. Ms.	Con	697	49.6
Hammond L.	Con	689	-
Search M.	Con	648	-
Pointon I.*	Lab	645	-
Tracey M.*	Lab	631	-
Turnout		36.1	0.7

Witham Silver End & Rivenhall (2972) ²			
		vote	share
Evans J. Ms.*	Lab	899	61.5
Lyon J. Ms.*	Lab	894	-
Digby P.	Con	563	38.5
Willingham T.	Con	560	-
Turnout		49.2	23.0

Witham South (4508) ²			
		vote	share
Ledwell R.	Con	751	38.7
Whittington P.	Con	733	-
Keeble D.	Lib/SDP	688	35.5
Lake T.	Lib/SDP	580	-
Carpenter R.	Lab	500	25.8
Sabin D.	Lab	499	-
Turnout		43.0	3.2

Witham West (3060) ²			
		vote	share
Gibbs G. Ms.*	Con	675	45.8
Lager M.*	Con	664	-
Boylan K.	Lab	451	30.6
Franklin D.	Lab	418	-
Slowman A.	Lib/SDP	348	23.6
Faulkner J.	Lib/SDP	332	-
Turnout		48.2	15.2

Yeldham (1382)			
		vote	share
Barnes-Murphy M.	Con	358	41.8
Ellis T.	Lib	345	40.3
Turner A.	Lab	153	17.9
Turnout		61.9	1.5

Braintree - 1991

Black Notley (2434)			
		vote	share
Turner P.*	LD	755	61.9
Goddard P.	Con	363	29.8
Shirvington M.	Lab	101	8.3
Turnout		50.1	32.2

Bocking North (4271) ³			
		vote	share
Allard M.*	Lab	1,363	67.4
Mann D.*	Lab	1,229	-
Card F.	Lab	1,097	-
Wicks J.	Con	659	32.6
Mount S. Ms.	Con	658	-
Potter R.	Con	652	-
Turnout		44.2	34.8

Bocking South (4418) ³			
		vote	share
Warne G.*	Lab	1,273	43.9
Martin J.*	Lab	1,132	-
Johnson P.	Lab	1,117	-
Field G.	Con	670	23.1
Irminger C. Ms.	Ind Lab	650	22.4
Cook A.	Con	647	-
Hughes S. Ms.	LD	308	10.6
Braley P.	LD	302	-
Hasel S. Ms.	LD	300	-
Turnout		49.0	20.8

Braintree Central (4864) ³			
		vote	share
Warren G.*	Lab	1,115	48.6
Keeble R.*	Lab	1,048	-
Perks J.*	Lab	1,013	-
Crysell M.	Con	593	25.8
Daniels H. Ms.	LD	588	25.6
Churly J.	Con	584	-
Pugh J.	Con	552	-
Bignold J. Ms.	LD	526	-
Turnout		45.8	22.7

Braintree East (5334) ³			
		vote	share
Bishop E.	Lab	806	35.0
Davis R.	Con	803	34.9
Aguallo M. Ms.	Con	791	-
Phillips W. Ms.	Lab	781	-
Green G.	Lab	771	-
Hutton G.	Con	744	-
Bailey P.	LD	695	30.2
Buchan B. Ms.	LD	694	-
Rogers D.	LD	668	-
Turnout		42.2	0.1

Braintree West (4600) ³			
		vote	share
Cavinder R.*	LD	1,184	46.9
Rice D.*	LD	1,172	-
Turner J. Ms.	LD	1,093	-
Kirsch B.	Con	931	36.9
McKee J.	Con	930	-
Stein T.	Con	852	-
Cornell R.	Lab	409	16.2
Gibson A.	Lab	406	-
Green L. Ms.	Lab	393	-
Turnout		53.4	10.0

Bumpstead (1643)			
		vote	share
Collar J.	Con	524	62.4
Tindall W.	Lab	316	37.6
Turnout		51.1	24.8

Castle Hedingham (1396)			
		vote	share
Clements M. M	LD	0	0.0
Turnout		0.0	0.0
Coggeshall (4014) ³			
		vote	share
Trapp M.*	Con	845	32.6
Drake W. Ms.*	Ind	779	30.0
Langdale A. Ms.	Con	776	-
Ledwidge E.	Con	680	-
Overnell J.	Lab	512	19.7
Anderson G.	Lab	494	-
Coles K.	LD	460	17.7
Brisbane S. Ms.	Lab	449	-
Papworth J. Ms.	LD	393	-
Sibley D.	LD	356	-
Turnout		60.6	2.5
Colne Engaine & Greenstead Green (1188)			
		vote	share
Watson M. Ms.	Con	438	74.7
McGillivray P.	Lab	148	25.3
Turnout		49.3	49.5
Cressing (1207)			
		vote	share
Flint L. Ms.	Con	361	55.5
Tew G. Ms.	Lab	290	44.5
Turnout		53.9	10.9
Earls Colne (2886) ²			
		vote	share
Boyce S. Ms.*	Ind	0	-
Macey J.*	Ind	0	0.0
Turnout		0.0	0.0
Gosfield (1093)			
		vote	share
Pineger P.	Con	409	62.1
Waters R.	LD	250	37.9
Turnout		60.3	24.1
Halstead Holy Trinity (3807) ³			
		vote	share
Pell J. Ms.*	Rate	1,102	45.4
Mayes R. Ms.*	Lab	1,027	42.3
Garlick P.	Rate	706	-
Hubbard F.	Lab	654	-
Knight S.	Lab	569	-
Rooney S.	LD	297	12.2
Turnout		63.7	3.1
Halstead St. Andrews (3585) ²			
		vote	share
De Frates A.*	Rate	674	31.2
McDowell E.	Rate	561	-
Jones M. Ms.	Lab	526	24.4
Fincken M.	Lab	405	-
Forder O.	LD	363	16.8
Francis M.	Con	361	16.7
Covell C.	Ind	234	10.8
Turnout		43.6	6.9
Hatfield Peverel (3433) ²			
		vote	share
Bigden K.*	Con	806	47.4
Royffe E. Ms.	Ind	725	42.6
Bird J. Ms.*	Con	670	-
Wilkinson K. Ms.	Ind	646	-
Marks R.	Lab	170	10.0
Fyfe T. Ms.	Lab	161	-
Turnout		66.3	4.8

Kelvedon (3658) ³			
		vote	share
Crayston R.	Con	1,172	41.5
Savill A.*	Con	1,114	-
Kimberley J. Ms.*	Con	1,068	-
Hinds J. Ms.	Ind	883	31.2
Marshall I.	Lab	771	27.3
Pickles S.	Lab	695	-
Fyfe J.	Lab	572	-
Turnout		53.1	10.2
Panfield (1314)			
		vote	share
Overall A.*	Ind	365	54.3
Deacon B. Ms.	Con	193	28.7
Green D.	Lab	114	17.0
Turnout		51.1	25.6
Rayne (1825)			
		vote	share
Moore A.*	Con	466	47.3
Brown B.	LD	372	37.8
Rees M.	Lab	147	14.9
Turnout		54.0	9.5
Sible Hedingham (2686) ²			
		vote	share
Ellis T.	LD	579	53.8
Hill J.	Con	498	46.2
Northwood S.	Con	455	-
Nicholls T.	LD	440	-
Turnout		36.7	7.5
Stour Valley Central (1184)			
		vote	share
Fletcher D.	Con	303	45.9
Smith D.	Ind	206	31.2
Owen P.	Lab	151	22.9
Turnout		55.7	14.7
Stour Valley North (1089)			
		vote	share
Hall M.*	Con	377	64.1
Kotz B. Ms.	Lab	211	35.9
Turnout		54.0	28.2
Stour Valley South (1579)			
		vote	share
Roberts J.	Con	0	0.0
Turnout		0.0	0.0
Terling (1228)			
		vote	share
Hodson R.*	Con	400	58.7
Barber D. Ms.	LD	154	22.6
Stewart G. Ms.	Lab	127	18.6
Turnout		55.5	36.1
Three Fields (2722) ²			
		vote	share
Finbow J.*	Con	846	56.2
Hawkins R.*	Con	828	-
Nicholls J. Ms.	LD	331	22.0
Smith L. Ms.	Lab	328	21.8
English L.	Lab	266	-
Turnout		55.3	34.2
Upper Colne (1287)			
		vote	share
Bolton R.	Con	395	55.7
Taylor M.	Ind	314	44.3
Turnout		55.1	11.4
Witham Central (2062)			
		vote	share
Pitchforth H. Ms.*	Ind	446	45.8
Allen B.	Con	368	37.8
Forde K. Ms.	Lab	159	16.3
Turnout		47.2	8.0

Witham Chipping Hill (3294) ²			
		vote	share
Barlow P.	Lab	620	44.3
Boylan K.	Lab	615	-
Ryland P.	Con	521	37.2
Ledwell R.	Con	513	-
Ransome S. Ms.	Green	129	9.2
Goodfellow S. Ms.	LD	129	9.2
Maltby W.	Green	96	-
Turnout		42.5	7.1
Witham North (3816) ³			
		vote	share
Gyford J. Ms.*	Lab	750	47.6
Stevens B.	Lab	709	-
Pointon I.	Lab	694	-
Farrow B. Ms.*	Con	559	35.5
Hunt A.	Con	527	-
Basham P.	Con	520	-
Slowman A.	LD	265	16.8
Muffet F.	LD	236	-
Horsley D.	LD	224	-
Turnout		39.2	12.1
Witham Silver End & Rivenhall (3035) ²			
		vote	share
Lyon J. Ms.*	Lab	730	42.2
Hughes S. Ms.	Lab	590	-
Stedman D.	LD	560	32.4
Lake T.	LD	376	-
Sutton A.	Con	349	20.2
Clarke W.	Con	344	-
Abbott J.	Green	92	5.3
Gerrard-Street C. Ms.	Green	81	-
Turnout		54.3	9.8
Witham South (4570) ²			
		vote	share
Hewitt T.	Lab	781	41.8
O'Hare J.	Lab	769	-
Whittington P.*	Con	636	34.1
Mitchell M. Ms.	Con	611	-
Fleet B.	LD	450	24.1
Ginger C. Ms.	LD	418	-
Turnout		40.1	7.8
Witham West (2918) ²			
		vote	share
Bennett A.	Lab	650	46.8
Gibbs G. Ms.*	Con	603	43.4
Lager M.*	Con	594	-
Miller K.	Lab	557	-
Mawson F. Ms.	Green	137	9.9
Hughes P.	Green	120	-
Turnout		45.6	3.4
Yeldham (1395)			
		vote	share
Crowther J.	Con	346	44.4
Kotz J.	Lab	247	31.7
Ellis G.	LD	159	20.4
Barratt N. Ms.	Green	27	3.5
Turnout		55.8	12.7
Braintree - 1995			
Black Notley (2504)			
		vote	share
Turner P.*	LD	634	56.2
Goddard P.	Con	251	22.2
White J.	Lab	244	21.6
Turnout		45.4	33.9

Bocking North (4342) ³			
		vote	share
Mann D.*	Lab	1,368	67.8
Allard M.*	Lab	1,272	-
Card F.*	Lab	1,243	-
Potter R.	Con	392	19.4
Rice B. Ms.	LD	259	12.8
Venus R.	LD	216	-
Morad-Tehrani L. Ms.	LD	171	-
Turnout		44.0	48.3

Bocking South (4525) ³			
		vote	share
Warne G.*	Lab	1,391	67.2
Green L. Ms.	Lab	1,319	-
Johnson P.*	Lab	1,307	-
Eades J.	Con	430	20.8
Field G.	Con	426	-
Seymour S.	LD	248	12.0
Sweeting R.	LD	216	-
Wood I. Ms.	LD	196	-
Turnout		45.1	46.4

Braintree Central (4882) ³			
		vote	share
Warren G.*	Lab	1,172	63.8
Keeble R.*	Lab	1,150	-
Perks J.*	Lab	1,101	-
Graystone T.	LD	397	21.6
Rice D.	LD	387	-
Stock B.	LD	325	-
Stein V. Ms.	Con	268	14.6
Turnout		36.5	42.2

Braintree East (5578) ³			
		vote	share
Bishop E.*	Lab	1,341	62.2
Miller K.	Lab	1,195	-
Green D.	Lab	1,176	-
Davis R.*	Con	453	21.0
Gibbs S.	Con	404	-
Brooks P. Ms.	LD	363	16.8
Braley P.	LD	348	-
Brooks T.	LD	295	-
Turnout		38.1	41.2

Braintree West (4939) ³			
		vote	share
Cavinder R.*	LD	900	36.8
Rice D.*	LD	877	-
Buchan B. Ms.	Lab	848	34.7
Turner J. Ms.*	LD	832	-
Moules R.	Lab	822	-
Shirvington M.	Lab	817	-
Bowtell D.	Con	695	28.4
Kirsch B.	Con	526	-
McKee J.	Con	526	-
Turnout		48.0	2.1

Bumpstead (1790)			
		vote	share
Holmes M. Ms.	Lab	311	35.6
Pattie V. Ms.	LD	289	33.1
Collar J.*	Con	273	31.3
Turnout		49.3	2.5

Castle Hedingham (1417)			
		vote	share
Allfrey H.*	Con	375	44.3
Stockill M.	LD	259	30.6
Snarey E.	Lab	212	25.1
Turnout		57.7	13.7

Coggeshall (4251) ³			
		vote	share
Tebbutt B.	Lab	1,228	41.7
Cowlin M. Ms.	Lab	1,052	-
Naylor R.	Lab	854	-
Drake W. Ms.*	Ind	799	27.2
Langdale A. Ms.*	Con	592	20.1
Trapp M.*	Con	569	-
Hall E. Ms.	Con	501	-
Sutherland M.	Ind	493	-
Sibley D.	LD	323	11.0
Turnout		56.0	14.6

Colne Engaine & Greenstead Green (1216)			
		vote	share
Watson M. Ms.*	Con	0	0.0
Turnout		0.0	0.0

Cressing (1245)			
		vote	share
Flint L. Ms.*	Ind	385	53.8
Tew G. Ms.	Lab	330	46.2
Turnout		58.0	7.7

Earls Colne (2955) ²			
		vote	share
Axtell A.	Lab	530	41.1
Boyce S. Ms.	Ind	526	40.8
Fyfe T. Ms.	Lab	428	-
Taylor P. Ms.	Ind	420	-
Morter H. Ms.	Con	234	18.1
Turnout		40.7	0.3

Gosfield (1136)			
		vote	share
Broyd B.	Con	248	37.2
Turpin R.	Ind	212	31.8
Webb P. Ms.	Lab	116	17.4
Waters R.	LD	91	13.6
Turnout		58.7	5.4

Halstead Holy Trinity (3978) ³			
		vote	share
Mayes R. Ms.*	Lab	977	42.4
Fincken M.	Lab	852	-
Pell J. Ms.*	Res	815	35.4
Knight S.	Lab	674	-
Garlick P.*	Res	492	-
Pike J.	Con	322	14.0
Barnes J. Ms.	LD	190	8.2
Forder C. Ms.	LD	160	-
Hiscox B.	LD	95	-
Turnout		43.7	7.0

Halstead St. Andrews (3653) ²			
		vote	share
De Frates A.*	Res	614	37.0
McCoyd G.	Lab	541	32.6
McDowell E.*	Res	530	-
Warren G.	Lab	524	-
Forder O.	LD	324	19.5
Clayton D.	LD	253	-
Hamilton E.	Con	182	11.0
Turnout		43.0	4.4

Hatfield Peverel (3591) ²			
		vote	share
Bigden K.*	Con	646	37.2
Royffe E. Ms.*	Ind	597	34.3
Jarvis J. Ms.	Con	529	-
Stevens C. Ms.	Lab	495	28.5
Heath P.	Lab	471	-
Turnout		41.0	2.8

Kelvedon (4090) ³			
		vote	share
Marshall I.	Lab	1,182	48.3
Davidson E. Ms.	Lab	1,106	-
Fyfe J.	Lab	1,039	-
Crayston R.*	Con	936	38.2
Kimberley J. Ms.*	Con	922	-
Savill A.*	Con	905	-
Bensilum P.	LD	330	13.5
Turnout		53.0	10.0

Panfield (1374)			
		vote	share
Overall A.*	Ind	411	67.3
Read D.	Lab	200	32.7
Turnout		44.6	34.5

Rayne (1913)			
		vote	share
Meadows A.	LD	438	46.3
Moore A.*	Con	306	32.3
Marsden J.	Lab	202	21.4
Turnout		50.0	14.0

Sible Hedingham (2850) ²			
		vote	share
Ellis T.*	LD	388	41.8
Partridge N.	LD	336	-
Owen N.	Lab	311	33.5
Scrivens S.	Lab	273	-
Ward K.	Con	229	24.7
Turnout		32.0	8.3

Stour Valley Central (1207)			
		vote	share
Finch D.	Con	274	51.3
Owen P.	Lab	260	48.7
Turnout		44.2	2.6

Stour Valley North (1207)			
		vote	share
Hall M.*	Con	302	53.1
Kotz B. Ms.	Lab	267	46.9
Turnout		47.5	6.2

Stour Valley South (1675)			
		vote	share
Roberts J.*	Con	436	50.5
Savill C. Ms.	LD	217	25.1
Kotz C.	Lab	210	24.3
Turnout		51.7	25.4

Terling (1251)			
		vote	share
Williams M. Ms.	Lab	284	43.6
Hodson R.*	Con	268	41.2
Hodges D.	Ind	99	15.2
Turnout		50.0	2.5

Three Fields (2879) ²			
		vote	share
Hawkins R.*	Con	844	62.2
Finbow J.*	Con	838	-
Gibson A.	Lab	514	37.8
Parsons S. Ms.	Lab	478	-
Turnout		50.5	24.3

Upper Colne (1345)			
		vote	share
Bolton R.*	Con	362	56.0
Tindall W.	Lab	285	44.0
Turnout		47.0	11.9

Witham Central (2221)			
		vote	share
Pitchforth H. Ms.*	Ind	318	31.1
Martin J. Ms.	Lab	310	30.3
Lager M.	Con	248	24.2
Fleet B.	LD	147	14.4
Turnout		46.5	0.8

Witham Chipping Hill (3381) ²			
		vote	share
Boylan K.*	Lab	789	60.1
Barlow P.*	Lab	784	-
Wacey R.	Con	229	17.4
Goodfellow S. Ms.	LD	172	13.1
Slowman A.	LD	154	-
Ransome S. Ms.	Green	123	9.4
Brunton N.	Green	99	-
Turnout		37.3	42.7

Witham North (3865) ³			
		vote	share
Evans R.	Lab	1,008	76.1
Gyford J. Ms.*	Lab	994	-
Pointon I.*	Lab	922	-
Farrow B. Ms.	Con	317	23.9
Turnout		35.0	52.2

Witham Silver End & Rivenhall (3159) ²			
		vote	share
Lyon J. Ms.*	Lab	1,000	64.9
Hughes S. Ms.*	Lab	878	-
Abbott J.	Green	307	19.9
Macwillson A.	Con	233	15.1
Peterson K.	Green	176	-
Turnout		45.5	45.0

Witham South (4752) ²			
		vote	share
O'Hare J.*	Lab	1,061	60.5
Tate B.	Lab	946	-
Ginger C. Ms.	LD	367	20.9
May C. Ms.	LD	333	-
Sharp H. Ms.	Con	326	18.6
Turnout		34.7	39.6

Witham West (2948) ²			
		vote	share
Bennett A.*	Lab	804	62.8
Reekie J. Ms.	Lab	788	-
Gibbs G. Ms.*	Con	339	26.5
Ryland P.	Con	278	-
Mawson F. Ms.	Green	137	10.7
Hughes P.	Green	129	-
Turnout		44.1	36.3

Yeldham (1436)			
		vote	share
Kotz J.	Lab	414	60.5
Hyland P.	Con	189	27.6
Thompson C. Ms.	LD	81	11.8
Turnout		47.0	32.9

Braintree - 1999

Black Notley (3786)			
		vote	share
Turner P.*	LD	673	55.3
Goddard P.	Con	399	32.8
Jagniaszek B.	Lab	145	11.9
Turnout		32.1	22.5

Bocking North (4379) ³			
		vote	share
Mann D.*	Lab	847	60.7
Allard M.*	Lab	761	-
Card F.*	Lab	738	-
Walsh P. Ms.	Con	341	24.4
Gask E. Ms.	LD	207	14.8
Braley P.	LD	189	-
Turnout		27.9	36.3

Bocking South (4568) ³			
		vote	share
Warne G.*	Lab	786	56.1
Green L. Ms.*	Lab	744	-
Taylor D.	Lab	703	-
Field G.	Con	345	24.6
Birks N.	Con	336	-
Martin M. Ms.	LD	175	12.5
Seymour S.	LD	135	-
Seymour H. Ms.	LD	125	-
Partridge W. Ms.	Green	96	6.8
Stewart D.	Green	83	-
Turnout		25.8	31.5

Braintree Central (5418) ³			
		vote	share
Keeble P. Ms.*	Lab	655	53.2
Millam A.	Lab	636	-
Unsworth J.	Lab	591	-
Roel I.	Con	265	21.5
Walters L. Ms.	Con	257	-
Dennis S.	LD	207	16.8
Graystone T.	LD	206	-
McDermott R.	LD	187	-
Andrews D.	Green	105	8.5
Turnout		21.4	31.7

Braintree East (6821) ³			
		vote	share
Bishop E.*	Lab	764	52.9
Green D.*	Lab	654	-
Thompson A.	Lab	644	-
Messer D.	Con	376	26.0
Reid D.	Con	362	-
Brooks P. Ms.	LD	305	21.1
Lemon P.	LD	290	-
Brooks T.	LD	283	-
Turnout		20.3	26.9

Braintree West (5460) ³			
		vote	share
Cavinder R.*	LD	638	35.7
Buchan B. Ms.*	Lab	609	34.0
Bacon C.	Lab	607	-
Beckett L. Ms.	LD	591	-
Martin A.	LD	564	-
Shirvington M.	Lab	552	-
Killick G.	Con	542	30.3
McKee J.	Con	532	-
Kirsch B.	Con	526	-
Turnout		32.7	1.6

Bumpstead (1884)			
		vote	share
Collar J.	Con	376	60.9
Marsden J.	Lab	241	39.1
Turnout		32.7	21.9

Castle Hedingham (1443)			
		vote	share
Allfrey H.*	Con	475	74.6
Scrivens S.	Lab	162	25.4
Turnout		44.1	49.1

Coggeshall (4329) ³			
		vote	share
Edey N.	Con	730	41.0
Joyce C. Ms.	Lab	714	40.1
Jones E. Ms.	Lab	702	-
McMillan T.	Con	684	-
Smith P.	Lab	663	-
Papworth J. Ms.	LD	335	18.8
Sibley D.	LD	283	-
Turnout		37.6	0.9

Colne Engaine & Greenstead Green (1263)			
		vote	share
Shelton A.	Con	367	72.8
Knight S.	Lab	137	27.2
Turnout		39.9	45.6

Cressing (1275)			
		vote	share
Flint L. Ms.*	Ind	271	63.0
Final A.	Lab	106	24.7
Boutell M.	LD	53	12.3
Turnout		33.7	38.4

Earls Colne (3005) ²			
		vote	share
Boyce S. Ms.*	Ind	645	72.2
Mascall A.	Ind	568	-
Fyfe T. Ms.	Lab	248	27.8
Heppolette S.	Lab	212	-
Turnout		29.7	44.5

Gosfield (1177)			
		vote	share
Broyd B.*	Con	436	72.8
Webb L. Ms.	Lab	163	27.2
Turnout		50.9	45.6

Halstead Holy Trinity (4036) ³			
		vote	share
Pell J. Ms.*	Res	702	41.0
Mayes R. Ms.*	Lab	629	36.7
Fincken M.*	Lab	535	-
Warren G.	Lab	440	-
McArdle T.	Con	234	13.7
Mison B.	Con	208	-
Whybrow C.	LD	148	8.6
Forder C. Ms.	LD	122	-
Clayton M.	LD	112	-
Turnout		30.9	4.3

Halstead St. Andrews (4076) ²			
		vote	share
Gage B. Ms.	Res	522	39.9
Gage M.	Res	515	-
Carr B. Ms.	Lab	396	30.3
McCoyd G.*	Lab	345	-
Dye L.	Con	240	18.4
Mison M. Ms.	Con	211	-
Forder O.	LD	149	11.4
Barnes J. Ms.	LD	128	-
Turnout		32.7	9.6

Hatfield Peverel (3579) ²			
		vote	share
Bigden K.*	Con	633	47.6
Jarvis J. Ms.	Con	621	-
Royffe E. Ms.*	Ind	368	27.7
Glasmann J.	Lab	329	24.7
Heath P.	Lab	227	-
Turnout		31.1	19.9

Kelvedon (4187) ³			
		vote	share
Marshall I.*	Lab	779	33.9
Davidson E. Ms.*	Lab	779	-
Fyfe J.*	Lab	711	-
Gibbs S.	Con	663	28.8
Openshaw S. Ms.	Con	610	-
Hackworth J.	Con	609	-
Raison G.	Ind	508	22.1
Ashby M.	LD	211	9.2
Leatherdale P.	Green	138	6.0
Turnout		41.9	5.0

Panfield (1328)			
		vote	share
Walsh S.	Con	308	56.5
Camell V. Ms.	Lab	237	43.5
Turnout		41.0	13.0

Rayne (2005)			
		vote	share
Meadows A.*	LD	355	54.6
Lees G.	Con	207	31.8
Parsons R.	Lab	88	13.5
Turnout		32.4	22.8

Sible Hedingham (2914) ²			
		vote	share
Tanner C.	Con	316	45.8
Brown J.	Con	314	-
Ellis T.*	LD	248	35.9
Turner J. Ms.	LD	173	-
Owen N.	Lab	126	18.3
Hearn F.	Lab	118	-
Turnout		23.9	9.9

Stour Valley Central (1297)			
		vote	share
Finch D.*	Con	273	59.1
Owen P.	Lab	189	40.9
Turnout		35.6	18.2

Stour Valley North (1259)			
		vote	share
Harley N.	Con	348	65.3
Scrivens L. Ms.	Lab	185	34.7
Turnout		42.3	30.6

Stour Valley South (1731)			
		vote	share
Acheson V.	Con	444	64.3
Kotz C.	Lab	131	19.0
Savill C. Ms.	LD	115	16.7
Turnout		39.9	45.4

Terling (1243)			
		vote	share
Galione M. Ms.	Con	280	48.9
Williams M. Ms.*	Lab	242	42.2
Barber D. Ms.	LD	51	8.9
Turnout		46.1	6.6

Three Fields (3007) ²			
		vote	share
Hawkins R.*	Con	736	73.2
Finbow J.	Con	714	-
Johnson P.	Lab	270	26.8
Axtell A.	Lab	244	-
Turnout		34.7	46.3

Upper Colne (1435)			
		vote	share
Bolton R.*	Con	429	70.6
Dyson D.	Lab	179	29.4
Turnout		42.4	41.1

Witham Central (2333)			
		vote	share
Pitchforth H. Ms.	Ind	385	46.3
Lager M.	Con	285	34.3
Jones M.	Lab	162	19.5
Turnout		35.7	12.0

Witham Chipping Hill (3397) ²			
		vote	share
Barlow P.*	Lab	432	55.5
Boylan K.*	Lab	423	-
Andrews N.	Con	162	20.8
Peck G.	Con	145	-
Verrall P. Ms.	LD	129	16.6
Verrall K.	LD	116	-
Ransome S. Ms.	Green	56	7.2
Brunton N.	Green	52	-
Turnout		23.2	34.7

Witham North (3670) ³			
		vote	share
Evans R.*	Lab	605	65.1
Gyford J. Ms.*	Lab	586	-
Pinton I.	Lab	567	-
Farrow B. Ms.	Con	191	20.5
Brunton P. Ms.	Green	134	14.4
Jones J. Ms.	Green	102	-
Peterson K.	Green	93	-
Turnout		23.5	44.5

Witham Silver End & Rivenhall (3302) ²			
		vote	share
Abbott J.	Green	715	46.0
Hughes P.	Green	554	-
Tate B.	Lab	551	35.5
Tew G. Ms.	Lab	496	-
Fierheller E. Ms.	LD	204	13.1
Dean J.	Ind	84	5.4
Turnout		41.3	10.6

Witham South (4964) ²			
		vote	share
Martin J. Ms.	Lab	583	52.7
Tincknell R.	Lab	526	-
Haggerty D.	Con	271	24.5
Lightfoot N.	Con	265	-
Fleet B.	LD	174	15.7
May C. Ms.	LD	144	-
Pickett A. Ms.	Green	78	7.1
Scales N.	Green	73	-
Turnout		21.7	28.2

Witham West (2900) ²			
		vote	share
Tearle K. Ms.	Lab	432	48.4
Reekie J. Ms.*	Lab	426	-
Jarvis J. Ms.	Con	260	29.1
Wacey R.	Con	237	-
May C.	LD	124	13.9
Gerrard C. Ms.	Green	77	-
Hobbs-Waller C. Ms.	Green	77	8.6
Turnout		29.9	19.3

Yeldham (1575)			
		vote	share
Kotz J.*	Lab	0	0.0
Turnout		0.0	0.0

Braintree - 2003

Black Notley & Terling (2915) ²			
		vote	share
Turner P.*	LD	504	41.8
Galione M. Ms.*	Con	501	41.5
Turner J. Ms.	LD	449	-
Louis C. Ms.	Con	377	-
Williams M. Ms.	Lab	201	16.7
Horrell R.	Lab	151	-
Turnout		44.0	0.2

Bocking Blackwater (5946) ³			
		vote	share
Schmitt J. Ms.	Con	733	38.1
Reid D.	Con	713	-
Haslam R.	Con	701	-
Bishop A. Ms.	Lab	647	33.6
Lodge R.	Lab	572	-
Shirvington M.	Lab	527	-
Seymour S.	LD	321	16.7
Graystone T.	LD	278	-
Partridge W. Ms.	Green	222	11.5
Turnout		27.8	4.5

Bocking North (3317) ²			
		vote	share
Mann D.*	Lab	496	52.2
Everard A.	Lab	450	-
McMillan T.	Con	300	31.5
Walsh P. Ms.	Con	275	-
Fierheller E. Ms.	LD	155	16.3
Turnout		27.5	20.6

Bocking South (3751) ²			
		vote	share
Green L. Ms.*	Lab	566	56.2
Thorogood M. Ms.	Lab	536	-
Birks N.	Con	297	29.5
Scattergood A.	Con	222	-
Stewart D.	Green	145	14.4
Turnout		24.6	26.7

Bradwell Silver End & Rivenhall (3646) ²			
		vote	share
Abbott J.*	Green	855	58.3
Hughes P.*	Green	755	-
Tew G. Ms.	Lab	434	29.6
Cann M. Ms.	Lab	399	-
Final A.	LD	178	12.1
French B. Ms.	LD	170	-
Turnout		40.2	28.7

Braintree Central (5329) ³			
		vote	share
Cavinder R.*	LD	487	25.8
Green M.*	Lab	476	25.2
Edwards W.	Lab	466	-
Lotery D.	Lab	452	-
Brown J.*	Con	451	23.8
McKee J.	Con	446	-
McDermott R.	LD	390	-
Fish J. Ms.	LD	387	-
Buchan B. Ms.	Ind	344	18.2
Green R.	Ind	256	-
Darney D.	Green	133	7.0
Turnout		25.0	0.6

Braintree East (4465) ³			
		vote	share
Bishop E.*	Lab	597	43.4
Lynch E.	Lab	531	-
Coughlan C.	Lab	502	-
McIntosh D.	Con	304	22.1
Clark L. Ms.	Ind	254	18.5
Buchan M.	Ind	228	-
Lemon P.	LD	219	15.9
Brooks P. Ms.	LD	216	-
Turnout		25.7	21.3

Braintree South (5041) ³			
		vote	share
Lynch M.	Lab	611	36.0
Millam A.*	Lab	563	-
Rice D.	LD	528	31.1
Parsons R.	Lab	520	-
Messer D.	Con	371	21.9
Rix H.	Con	337	-
Andrews D.	Green	187	11.0
Turnout		25.9	4.9

Bumpstead (1906)			
		vote	share
Collar J.*	Con	534	71.0
Bennett A.	Lab	218	29.0
Turnout		39.7	42.0

Coggeshall & North Feering (3882) ²			
		vote	share
Newton P. Ms.	Con	767	42.4
Edey N.*	Con	738	-
Joyce C. Ms.*	Lab	640	35.4
Lazell T.	Lab	598	-
Sibley D.	LD	231	12.8
Langsdon M.	Green	172	9.5
Turnout		41.0	7.0

Cressing & Stisted (1776)			
		vote	share
Flint L. Ms.*	Ind	353	55.9
Heasman D.	Con	279	44.1
Turnout		28.0	11.7

Gosfield & Greenstead Green (1983)			
		vote	share
Broyd B.*	Con	531	55.1
Waters R.	Ind	294	30.5
Marshall D. Ms.	Lab	138	14.3
Turnout		48.0	24.6

Great Notley & Braintree West (4449) ³			
		vote	share
Butland G.	Con	862	55.2
Jenner A.	Con	794	-
Walters R.	Con	767	-
Beckett L. Ms.	LD	341	21.8
Brale P.	LD	316	-
Brooks T.	LD	304	-
Watts A.	Ind	192	12.3
Barlow L. Ms.	Lab	168	10.7
Tate B.	Lab	158	-
Tearle A.	Lab	141	-
Turnout		32.1	33.3

Halstead St. Andrews (5201)³			
		vote	share
Gage M.*	HalsRA	1,042	73.4
Gage B. Ms.*	HalsRA	1,037	-
Catley H. Ms.	HalsRA	1,029	-
McCoyd G.	Lab	377	26.6
Rogers T. Ms.	Lab	372	-
Gilbert S.	Lab	346	-
Turnout		28.5	46.9
Halstead Trinity (3544)²			
		vote	share
Pell J. Ms.*	HalsRA	822	69.4
Pilgrim J.	HalsRA	612	-
Fincken M.*	Lab	362	30.6
Knight S.	Lab	344	-
Turnout		30.0	38.9
Hatfield Peverel (3445)²			
		vote	share
Bigden K.*	Con	806	75.8
Finch D.*	Con	684	-
Watt P.	Lab	257	24.2
Bermudez V. Ms.	Lab	225	-
Turnout		30.5	51.6
Hedingham & Maplestead (4986)³			
		vote	share
Beavis J. Ms.	Con	1,013	46.1
Tanner C.*	Con	924	-
Scattergood W. Ms.	Con	710	-
Bolter S.	LD	542	24.7
Owen N.	Lab	332	15.1
Schwier P.	Ind	310	14.1
Goodfellow S.	Lab	259	-
Tew K.	Lab	199	-
Turnout		32.9	21.4
Kelvedon (3882)²			
		vote	share
Foster T.	Con	732	38.3
Mitchell R.	Con	655	-
Davidson E. Ms.*	Lab	592	31.0
Marshall I.*	Lab	579	-
Hackworth J.	Ind	387	20.3
Boyer B.	Ind	300	-
Ashby M.	LD	198	10.4
Turnout		45.0	7.3
Panfield (1656)			
		vote	share
Wilkinson T.	Con	421	70.8
Green R.	Lab	174	29.2
Turnout		36.0	41.5
Rayne (1665)			
		vote	share
Meadows A.*	LD	369	50.8
Macnee E. Ms.	Con	358	49.2
Turnout		43.2	1.5
Stour Valley North (1724)			
		vote	share
Harley N.*	Con	447	62.7
Posen M.	LD	136	19.1
Owen P.	Lab	130	18.2
Turnout		41.2	43.6
Stour Valley South (1727)			
		vote	share
Shelton A.*	Con	498	73.1
Hearn F.	Lab	183	26.9
Turnout		37.0	46.3
The Three Colnes (3813)²			
		vote	share
Gaught B.	Ind	740	43.2
Spray G. Ms.	Con	658	38.4
Alston R.	Lab	314	18.3
Overnell S. Ms.	Lab	305	-
Turnout		32.2	4.8

Three Fields (3035)²			
		vote	share
Finbow J.*	Con	800	77.7
Walsh S.*	Con	783	-
Axtell A.	Lab	230	22.3
Overnell J.	Lab	221	-
Turnout		36.5	55.3
Upper Colne (1703)			
		vote	share
Bolton R.*	Con	450	67.0
Jones E. Ms.	LD	132	19.6
Long P.	Lab	90	13.4
Turnout		34.0	47.3
Witham Chipping Hill & Central (3647)²			
		vote	share
Barlow P.*	Lab	443	29.5
Lager M.	Con	443	29.5
Pointon I.	Lab	372	-
Fleet B.	LD	363	24.1
May C. Ms.	LD	268	-
Brunton N.	Green	255	17.0
Turnout		33.0	0.0
Witham North (3619)²			
		vote	share
Evans R.*	Lab	462	47.5
Gyford J.	Lab	435	-
Heasman C. Ms.	Con	215	22.1
Barber D. Ms.	LD	157	16.2
Scales N.	Green	138	14.2
Gerrard C. Ms.	Green	115	-
Turnout		22.8	25.4
Witham South (4803)³			
		vote	share
Martin J. Ms.*	Lab	583	39.0
Heath P.	Lab	574	-
Tincknell R.*	Lab	521	-
Jarvis J. Ms.*	Con	515	34.4
Ramage R.	Con	498	-
Louis D.	Con	469	-
Dearlove B.	LD	219	14.6
Gerrard C. Ms.	LD	194	-
Ransome S. Ms.	Green	178	11.9
Turnout		27.8	4.5
Witham West (5091)³			
		vote	share
Boylan K.*	Lab	564	35.3
Tearle K. Ms.*	Lab	546	-
Reekie J. Ms.*	Lab	533	-
Walton J. Ms.	Con	426	26.7
Hicks S.	Green	314	19.6
Brunton P. Ms.	Green	297	-
Hooper P. Ms.	LD	294	18.4
Peterson K.	Green	253	-
Turnout		24.8	8.6
Yeldham (1564)			
		vote	share
McCrea N.	Con	245	42.5
Scrivens S.	Lab	168	29.2
Ellis T.	LD	163	28.3
Turnout		36.5	13.4
Braintree - 2007			
Black Notley & Terling (2991)²			
		vote	share
Galione M. Ms.*	Con	805	62.5
Meyer A.	Con	752	-
Walton J. Ms.	Lab	192	14.9
Bennett T.	Lab	165	-
Weaver A.	LD	159	12.3
Wells J. Ms.	Green	133	10.3
Turnout		41.2	47.6

Bocking Blackwater (5851)³			
		vote	share
Schmitt W. Ms.*	Con	1,099	49.8
Reid D.*	Con	1,099	-
Edey L. Ms.	Con	1,065	-
Brooks T.	LD	634	28.7
Green R.	Lab	474	21.5
Parsons R.	Lab	452	-
Coughlan M.	Lab	338	-
Turnout		34.0	21.1
Bocking North (3227)²			
		vote	share
Mann D.*	Lab	573	43.5
Everard T.*	Lab	547	-
Santomauro V. Ms.	Con	426	32.3
Smith J. Ms.	Con	374	-
Ford M.	UKIP	187	14.2
Fierheller E. Ms.	LD	131	9.9
Turnout		38.0	11.2
Bocking South (3953)²			
		vote	share
Baugh J.	Con	619	47.2
Thorogood M. Ms.*	Lab	551	42.0
Sandbrook S.	Con	538	-
Watson L. Ms.	Lab	534	-
Braley P.	LD	141	10.8
Turnout		33.2	5.2
Bradwell Silver End & Rivenhall (3499)²			
		vote	share
Abbott J.*	Green	895	77.6
Hughes P.*	Green	865	-
Tew G. Ms.	Lab	258	22.4
Tearle T.	Lab	229	-
Turnout		34.0	55.2
Braintree Central (5620)³			
		vote	share
McKee J.	Con	1,042	44.2
McArdle T.	Con	999	-
Shepherd L. Ms.	Con	970	-
Bishop A. Ms.	Lab	573	24.3
Green M.*	Lab	529	-
Edwards B.*	Lab	492	-
Brooks P. Ms.	LD	423	17.9
Brunton R. Ms.	Green	321	13.6
Turnout		35.6	19.9
Braintree East (4710)³			
		vote	share
Bishop E.*	Lab	581	35.4
Denise C. Ms.	Con	546	33.3
Lynch E.*	Lab	541	-
Davidson E. Ms.	Lab	516	-
Edey N.	Con	507	-
Messer D.	Con	483	-
Shute P.	UKIP	266	16.2
Lemon P.	LD	247	15.1
Miller K.	LD	244	-
Turnout		31.3	2.1
Braintree South (4966)³			
		vote	share
Rice D.*	LD	673	28.4
Wilkins R.	Con	607	25.6
Lynch M.*	Lab	584	24.6
Finch D.	Con	529	-
Currie G.	Lab	518	-
Morse D.	Con	498	-
Millam A.*	Lab	474	-
Holmes D. Ms.	Green	259	10.9
Day A.	Edem	247	10.4
Turnout		34.2	2.8
Bumpstead (1949)			
		vote	share
Collar J.*	Con	515	62.2
Trumm S.	Lab	313	37.8
Turnout		43.0	24.4

Coggeshall & North Feering (3885) ²			
		vote	share
Newton P. Ms.*	Con	1,134	67.9
Dunn M.	Con	1,045	-
Alston R.	Lab	536	32.1
Joyce C. Ms.	Lab	513	-
Turnout		42.4	35.8

Cressing & Stisted (1759)			
		vote	share
Flint L. Ms.*	Ind	564	82.5
Shirvington M.	Lab	120	17.5
Turnout		40.8	64.9

Gosfield & Greenstead Green (1944)			
		vote	share
O'Reilly-Cicconi J.	Con	638	74.6
Bennett M. Ms.	Lab	217	25.4
Turnout		44.7	49.2

Great Notley & Braintree West (5005) ³			
		vote	share
Butland G.*	Con	1,158	63.3
Sandbrook C. Ms.	Con	1,129	-
Walters R.*	Con	1,010	-
Rice D.	LD	284	15.5
Watts T.	Ind	203	11.1
Tincknell R.	Lab	184	10.1
Goodfellow S.	Lab	148	-
Ezra D.	Lab	132	-
Turnout		32.0	47.8

Halstead St. Andrews (5160) ³			
		vote	share
Hume D.	HRA	949	49.7
Gage B. Ms.*	HRA	911	-
Gage M.*	HRA	822	-
Brown R.	Edem	564	29.5
McCoyd G.	Lab	398	20.8
Axtell A.	Lab	397	-
Freeman N. Ms.	Lab	358	-
Turnout		31.4	20.1

Halstead Trinity (3461) ²			
		vote	share
Pell J. Ms.*	HRA	604	62.9
Messenger H.	HRA	461	-
Fincken M.	Lab	357	37.1
Gilbert S.	Lab	291	-
Turnout		28.4	25.7

Hatfield Peverel (3338) ²			
		vote	share
Bebb D.	Con	1,006	78.0
Bigden K.*	Con	987	-
Hine C. Ms.	Lab	283	22.0
Coughlan N.	Lab	187	-
Turnout		38.6	56.1

Heddingham & Maplestead (4915) ³			
		vote	share
Beavis J. Ms.*	Con	1,283	54.9
Scattergood W. Ms.*	Con	1,114	-
Swallow F.	Con	1,103	-
Bolter S.	LD	726	31.1
Snarey T.	Lab	326	14.0
Kotz J.	Lab	236	-
Owen N.	Lab	224	-
Turnout		40.0	23.9

Kelvedon (3817) ²			
		vote	share
Foster T.*	Con	881	55.4
Mitchell R.*	Con	845	-
Marshall I.	Lab	432	27.2
Lazell T.	Lab	335	-
Gerrard C. Ms.	Green	278	17.5
Turnout		43.7	28.2

Panfield (1652)			
		vote	share
Wilkinson T.*	Con	630	80.5
May-Smith C.	Lab	153	19.5
Turnout		47.8	60.9

Rayne (1637)			
		vote	share
Banthorpe M.	Con	399	58.9
Beckett L.	LD	121	17.9
Morris C.	Edem	106	15.7
Tew K.	Lab	51	7.5
Turnout		41.5	41.1

Stour Valley North (1691)			
		vote	share
Harley N.*	Con	650	77.8
Kotz B. Ms.	Lab	186	22.2
Turnout		50.4	55.5

Stour Valley South (1697)			
		vote	share
Shelton A.*	Con	555	64.5
Crowe A.	LD	245	28.5
Hearn F.	Lab	60	7.0
Turnout		51.0	36.0

The Three Colnes (3895) ²			
		vote	share
O'Shea R. Ms.	Con	752	52.5
Spray G. Ms.*	Con	686	-
Gaught B.*	Ind	532	37.2
Bond J.	Ind	487	-
Marshall D. Ms.	Lab	148	10.3
Barlow H. Ms.	Lab	146	-
Turnout		38.3	15.4

Three Fields (3060) ²			
		vote	share
Finbow J.*	Con	1,066	82.5
Walsh S.*	Con	1,029	-
Green C. Ms.	Lab	226	17.5
Scrivens M.	Lab	204	-
Turnout		44.3	65.0

Upper Colne (1684)			
		vote	share
Bolton R.*	Con	579	83.1
Long P.	Lab	118	16.9
Turnout		42.0	66.1

Witham Chipping Hill & Central (3440) ²			
		vote	share
Lager M.*	Con	609	38.0
Howell S. Ms.	Con	593	-
Barlow P.*	Lab	517	32.2
Woodhouse C. Ms.	Lab	390	-
Hooper P. Ms.	LD	250	15.6
Brunton N.	Green	228	14.2
Turnout		40.5	5.7

Witham North (3412) ²			
		vote	share
Evans B.*	Lab	507	44.6
Gyford J.*	Lab	453	-
Lee P. Ms.	Con	406	35.7
Cohen P. Ms.	Con	376	-
Scales N.	Green	225	19.8
Turnout		32.0	8.9

Witham South (5751) ³			
		vote	share
Money J. Ms.	Con	829	42.1
Ramage R.	Con	794	-
Elliott J.	Con	771	-
Heath P.*	Lab	588	29.8
Martin J. Ms.*	Lab	587	-
Tearle W.	Lab	580	-
Brunton P. Ms.	Green	296	15.0
Dearlove B.	LD	257	13.0
Bills S. Ms.	Green	239	-
Turnout		30.9	12.2

Witham West (4983) ³			
		vote	share
Lambourne S.	Con	864	39.8
Rose B.	Con	636	-
Barlow L. Ms.	Lab	584	26.9
Tearle K. Ms.*	Lab	561	-
Boylan K.*	Lab	539	-
Reekie J. Ms.*	LD	367	16.9
Hicks S.	Green	357	16.4
Waring H. Ms.	LD	341	-
Fleet B.	LD	341	-
Partridge W. Ms.	Green	263	-
Turnout		35.4	12.9

Yeldham (1563)			
		vote	share
McCrea N.*	Con	373	72.6
Green D.	Lab	141	27.4
Turnout		33.5	45.1

Braintree - 2011

Black Notley & Terling (3077) ²			
		vote	share
Galione M. Ms.*	Con	789	47.9
Cunningham T.	Con	676	-
Walton J. Ms.	Lab	231	14.0
Bennett A.	Lab	217	-
Hodges D.	UKIP	200	12.1
Clarke J.	Ind	163	9.9
Toombs D.	LD	149	9.0
Gerrard-Abbott F.	Green	115	7.0
Turnout		46.0	33.9

Bocking Blackwater (6029) ³			
		vote	share
Canning S.	Con	1,243	44.5
Schmitt J. Ms.*	Con	1,059	-
Santomauro V. Ms.	Con	999	-
Bishop A. Ms.	Lab	796	28.5
Millam A.	Lab	623	-
Parsons R.	Lab	622	-
Helm G.	UKIP	418	15.0
Attwood S.	Green	334	12.0
Turnout		41.2	16.0

Bocking North (3526) ²			
		vote	share
Mann D.*	Lab	709	46.2
Everard T.*	Lab	657	-
Wilkinson T.*	Con	493	32.2
McCrea N.*	Con	376	-
Ford M.	UKIP	215	14.0
Holmes D. Ms.	Green	116	7.6
Turnout		40.7	14.1

Bocking South (4130) ²			
		vote	share
Baugh J.*	Con	701	44.0
Thorogood M. Ms.*	Lab	689	43.2
Watson L. Ms.	Lab	626	-
Olumbori A.	Con	508	-
Malam J.	Green	204	12.8
Turnout		36.2	0.8

Bradwell Silver End & Rivenhall (3668) ²			
		vote	share
Abbott J.*	Green	969	48.5
Wright B.	Green	689	-
White J.	Lab	422	21.1
Wright D.	Lab	358	-
Nimmons S.	Con	323	16.2
Wood B.	UKIP	284	14.2
Ryland P.	Con	266	-
Turnout		49.8	27.4

Braintree Central (6070)³			
		vote	share
McKee J.*	Con	1,132	41.6
Shepherd L. Ms.*	Con	957	-
Ramage R.*	Con	888	-
Gibson N.	Lab	805	29.6
Burne C. Ms.	Lab	789	-
Edwards W.	Lab	734	-
Shadbolt D.	Green	327	12.0
Lord R.	UKIP	323	11.9
Hooks P.	BNP	132	4.9
Turnout		38.8	12.0

Braintree East (5003)³			
		vote	share
Bishop E.*	Lab	762	41.9
Messer D.	Con	759	41.7
Gibson C. Ms.	Lab	756	-
Lynch E.*	Lab	710	-
Harrington L.	Con	691	-
Williams R.	Con	668	-
Partridge W. Ms.	Green	297	16.3
Turnout		36.0	0.2

Braintree South (5347)³			
		vote	share
Sandbrook S.	Con	844	36.3
Walters L. Ms.	Con	806	-
Rice D.*	Lab	780	33.6
Currie G.	Lab	711	-
Green M.	Lab	709	-
Noor S.	Con	605	-
Beatty A.	Ind	408	17.6
Reeve T.	Green	291	12.5
Turnout		37.3	2.8

Bumpstead (2019)			
		vote	share
Cadman C.	Con	713	70.0
Trumm S.	Lab	306	30.0
Turnout		51.3	39.9

Coggeshall & North Feering (3976)²			
		vote	share
Newton P. Ms.*	Con	1,254	61.6
Wilson S. Ms.	Con	1,114	-
Joyce C. Ms.	Lab	493	24.2
Cornish C. Ms.	Lab	478	-
Bills S. Ms.	Green	289	14.2
Turnout		50.0	37.4

Crressing & Stisted (1786)			
		vote	share
Flint L. Ms.*	Ind	600	76.9
Tew G. Ms.	Lab	180	23.1
Turnout		45.0	53.8

Gosfield & Greenstead Green (2026)			
		vote	share
O'Reilly-Cicconi J.*	Con	688	64.5
Gibson A.	Lab	254	23.8
Reed H.	Green	124	11.6
Turnout		53.2	40.7

Great Notley & Braintree West (5188)³			
		vote	share
Butland G.*	Con	1,435	67.8
Sandbrook C. Ms.*	Con	1,418	-
Walters R.*	Con	1,211	-
Green D.	Lab	407	19.2
Bennett C. Ms.	Lab	362	-
Goodfellow S.	Lab	306	-
Bills H.	Green	274	12.9
Turnout		41.3	48.6

Halstead St. Andrews (5267)³			
		vote	share
Sutton J. Ms.	Con	895	35.8
Allen J. Ms.	Con	827	-
Kirby S.	Con	762	-
Hume D.*	HRA	720	28.8
McCoyd G.	Lab	573	22.9
Paisley K.	HRA	571	-
Messenger H.*	HRA	405	-
Gilbert S.	Lab	388	-
Gage M.*	Ind	310	12.4
Scrivens S.	Lab	297	-
Gage B. Ms.*	Ind	291	-
Turnout		40.5	7.0

Halstead Trinity (3523)²			
		vote	share
Pell J. Ms.*	HRA	552	40.6
Fincken M.	Lab	456	33.5
Knight S.	Lab	376	-
Sharp D.	Con	352	25.9
Hilton L. Ms.	HRA	334	-
Warren Y. Ms.	Con	325	-
Turnout		37.4	7.1

Hatfield Peverel (3448)²			
		vote	share
Bebb D.*	Con	1,062	64.8
Louis D.	Con	981	-
Whitnell L. Ms.	Lab	357	21.8
Watts K. Ms.	Lab	288	-
Gerrard C. Ms.	Green	220	13.4
Turnout		47.2	43.0

Hedingham & Maplestead (5162)³			
		vote	share
Beavis J. Ms.*	Con	1,345	48.4
Johnson H.	Con	1,197	-
Scattergood W. Ms.*	Con	1,044	-
Bolter S.	LD	661	23.8
Ransome S. Ms.	Green	387	13.9
Owen N. Ms.	Lab	386	13.9
Kotz J.	Lab	350	-
Kotz B. Ms.	Lab	339	-
Turnout		44.3	24.6

Kelvedon (3948)²			
		vote	share
Foster T.*	Con	1,202	59.5
Mitchell R.*	Con	1,084	-
Marshall I.	Lab	537	26.6
Lewis A.	Lab	508	-
McCracken R.	Green	280	13.9
Turnout		50.4	32.9

Panfield (1709)			
		vote	share
Tattersley P.	Con	522	64.8
Rice D.	Lab	183	22.7
Maynard L. Ms.	Green	101	12.5
Turnout		47.8	42.1

Rayne (1745)			
		vote	share
Banthorpe M.*	Con	652	81.2
Coughlan C.	Lab	151	18.8
Turnout		46.8	62.4

Stour Valley North (1790)			
		vote	share
Swift J.	Con	686	76.0
Green R.	Lab	217	24.0
Turnout		51.1	51.9

Stour Valley South (1742)			
		vote	share
Shelton A.*	Con	711	78.6
Hearn F.	Lab	194	21.4
Turnout		53.7	57.1

The Three Colnes (3961)²			
		vote	share
Siddall C.	Con	1,242	73.2
Spray G. Ms.*	Con	1,097	-
Peacock L. Ms.	Lab	454	26.8
Marshall D. Ms.	Lab	348	-
Turnout		45.5	46.5

Three Fields (3148)²			
		vote	share
Finbow J.*	Con	1,125	76.6
Reid D.*	Con	1,029	-
Bennett M. Ms.	Lab	343	23.4
Woodhouse C. Ms.	Lab	298	-
Turnout		50.3	53.3

Upper Colne (1717)			
		vote	share
Bolton R.*	Con	599	73.3
Long P.	Lab	218	26.7
Turnout		48.6	46.6

Witham Chipping Hill & Central (3599)²			
		vote	share
Howell S. Ms.*	Con	662	43.3
Lager M.*	Con	652	-
Macdonald F.	Lab	396	25.9
Davidson E. Ms.	Lab	382	-
Fleet B.	LD	296	19.3
Waring H. Ms.	LD	181	-
Brunton N.	Green	176	11.5
Turnout		41.7	17.4

Witham North (3458)²			
		vote	share
Evans R.	Lab	613	42.6
Barlow P.	Lab	603	-
Thompson C.	Con	422	29.3
Cunningham J.	Con	363	-
Nicholls R.	Green	246	17.1
Livermore C.	LD	158	11.0
Turnout		38.0	13.3

Witham South (6319)³			
		vote	share
Money J. Ms.*	Con	997	43.2
Thompson C. Ms.	Con	937	-
Elliott J.*	Con	930	-
Heath P.	Lab	719	31.2
Biya O.	Lab	713	-
O'Shea A.	Lab	672	-
Wells A. Ms.	Green	352	15.3
Hicks S.	Green	290	-
Dearlove B.	LD	239	10.4
Turnout		34.3	12.1

Witham West (5031)³			
		vote	share
Rose B.*	Con	841	39.5
Hornor P.	Con	824	-
Louis C. Ms.	Con	736	-
Barlow L. Ms.*	Lab	697	32.7
Bennett A.	Lab	649	-
Tearle K. Ms.	Lab	640	-
Bunn A. Ms.	Green	362	17.0
Hughes P.*	Green	345	-
Fleet J.	LD	231	10.8
Hooper P. Ms.	LD	167	-
Turnout		40.4	6.8

Yeldham (1637)			
		vote	share
Parker I. Ms.	Con	426	58.2
Revell T.	Ind	155	21.2
Green R.	Lab	151	20.6
Turnout		44.9	37.0

