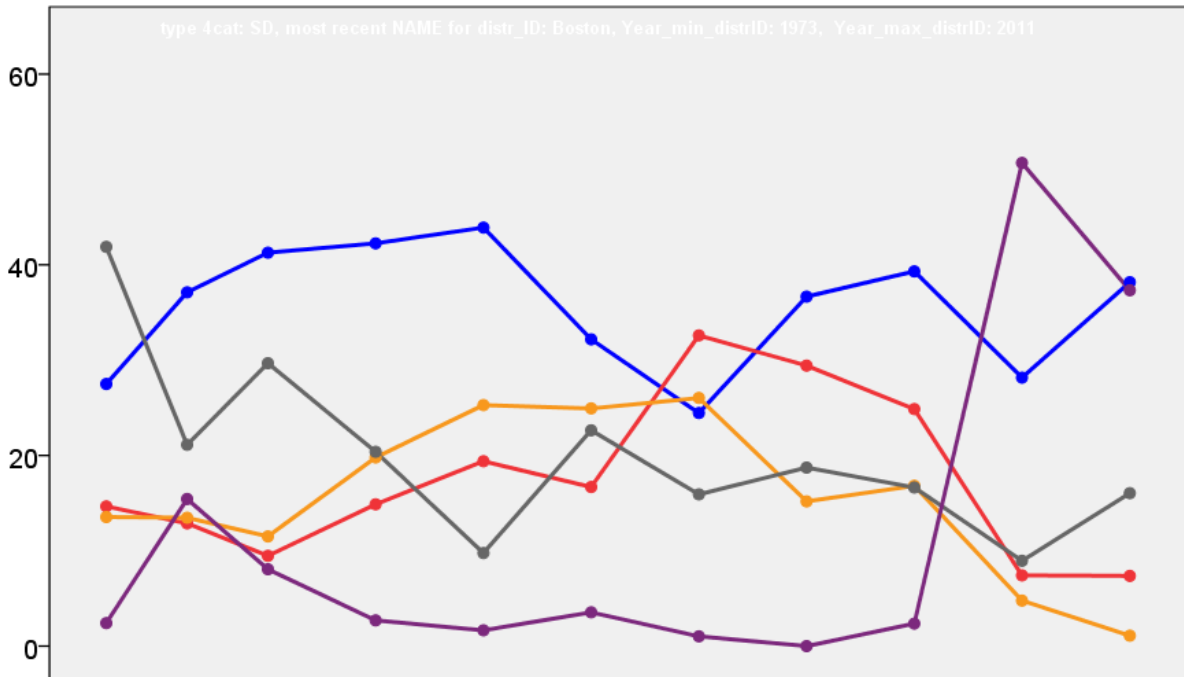


Boston Borough Council Election Results 1973-2011



Colin Rallings and Michael Thrasher
The Elections Centre
Plymouth University

The information contained in this report has been obtained from a number of sources. Election results from the immediate post-reorganisation period were painstakingly collected by Alan Willis largely, although not exclusively, from local newspaper reports. From the mid-1980s onwards the results have been obtained from each local authority by the Elections Centre. The data are stored in a database designed by Lawrence Ware and maintained by Brian Cheal and others at Plymouth University. Despite our best efforts some information remains elusive whilst we accept that some errors are likely to remain. Notice of any mistakes should be sent to elections@plymouth.ac.uk. The results sequence can be kept up to date by purchasing copies of the annual Local Elections Handbook, details of which can be obtained by contacting the email address above.

Front cover: the graph shows the distribution of percentage vote shares over the period covered by the results. The lines reflect the colours traditionally used by the three main parties. The grey line is the share obtained by Independent candidates while the purple line groups together the vote shares for all other parties.

Rear cover: the top graph shows the percentage share of council seats for the main parties as well as those won by Independents and other parties. The lines take account of any by-election changes (but not those resulting from elected councillors switching party allegiance) as well as the transfers of seats during the main round of local election.

The lower graph shows for each main round of local elections the overall percentage turnout (solid line), the percentage of women candidates standing at (dotted line) and the percentage of women among those elected (hashed line).

Boston - 1973

Central (1801) ²			
		vote	share
Wallis J.	Con	0	0.0
Haworth M. Ms.	Ind	0	0.0
Turnout		0.0	0.0

Fenside (2625) ²			
		vote	share
Addelsee J.	Lab	560	57.0
Rutt G.	Lab	503	-
Haworth N.	Ind	423	43.0
Turnout		37.4	13.9

Fishtoft (2933) ³			
		vote	share
Alcorn J.	Con	785	40.9
Ward T.	Ind	784	40.8
Smaller E.	Con	671	-
White A.	Lab	352	18.3
Turnout		65.5	0.1

Five Village (2301) ²			
		vote	share
Sharpe C.	Ind	605	69.3
Marriott I.	Ind	498	-
Collingwood F.	Con	268	30.7
Grierson F.	Con	69	-
Turnout		37.9	38.6

Frampton (916)			
		vote	share
Smith H.	Ind	236	62.1
Lewis J.	Lab	144	37.9
Turnout		41.5	24.2

Holland Fen (734)			
		vote	share
North T.	Ind	0	0.0
Turnout		0.0	0.0

Kirton (2341) ²			
		vote	share
Upsall R.	Con	0	0.0
Franks W.	Ind	0	0.0
Turnout		0.0	0.0

No. 1 (Boston: Bargate) (1487) ²			
		vote	share
Wright J.	Lib	469	64.2
Valentine C.	Lib	419	-
Foster A.	Ind	262	35.8
Turnout		49.2	28.3

No. 10 (Freiston) (1664) ²			
		vote	share
Paine P.	Ind	729	88.9
Hildred J.	Ind	716	-
McKenzie B.	Con	91	11.1
Turnout		49.3	77.8

No. 4 (Boston: Skirbeck) (4222) ⁴			
		vote	share
Goodson A.	Lab	966	33.1
Eyre B.	Lab	881	-
Harlow R.	Con	800	27.4
Hatfield D.	Lab	712	-
Newsom A.	Lab	673	-
Austin A.	Con	615	-
Mann E.	Lib	610	20.9
Budge S.	Ind	544	18.6
Turnout		69.2	5.7

No. 9 (Old Leake) (2567) ²			
		vote	share
Pigott D.	Ind	984	74.6
Allen H.	Ind	633	-
Woods S.	Con	335	25.4
Leeder J. Ms.	Ind	238	-
Turnout		51.4	49.2

South (2292) ²			
		vote	share
Valentine E. Ms.	Lib	804	50.2
Myatt F.	Lib	566	-
Veal B.	Ind Lib	448	27.9
Farrow B.	Con	351	21.9
Turnout		69.9	22.2

Swineshead (1214)			
		vote	share
Porter K.	Ind	342	57.4
Nundy D.	Ind	254	42.6
Turnout		49.1	14.8

West (4066) ³			
		vote	share
Parker J.	Con	1,111	38.5
Hughes N.	Ind	1,082	37.5
Fovargue C.	Con	974	-
Nuzum N. Ms.	Lab	692	24.0
Turnout		71.0	1.0

Witham (3304) ³			
		vote	share
Moulder R.	Con	1,050	46.1
Jenkin R.	Con	827	-
Surry D.	Lib	624	27.4
Julian G.	Con	611	-
Whitehead G.	Ind	605	26.5
Turnout		69.0	18.7

Wyberton (2457) ²			
		vote	share
Winter J.	Ind	667	68.9
Cheer M. Ms.	Ind	606	-
Solomon D. Ms.	Con	301	31.1
Dell J.	Con	210	-
Turnout		39.4	37.8

Boston - 1976

Central (1625) ²			
		vote	share
Wallis J.	Con	570	45.8
Haworth M. Ms.	Ind	558	44.8
Wright M. Ms.	Lib	117	9.4
Castle J.	Lib	76	-
Turnout		76.6	1.0

Fenside (2652) ²			
		vote	share
Powell B.	Con	524	57.5
Addelsee J.	Lab	388	42.5
Rutt G.	Lab	344	-
Turnout		34.4	14.9

Fishtoft (3200) ³			
		vote	share
Ward T.	Ind	0	0.0
Alcorn J.	Con	0	-
Smaller E.	Con	0	0.0
Turnout		0.0	0.0

Five Village (2307) ²			
		vote	share
Sharpe C.	Ind	672	67.7
Marriott I.	Ind	585	-
Truman G.	Con	320	32.3
Pears T.	Con	310	-
Turnout		43.0	35.5

Frampton (1000)			
		vote	share
Bailey G.	Con	0	0.0
Turnout		0.0	0.0

Holland Fen (731)			
		vote	share
North T.	Ind	0	0.0
Turnout		0.0	0.0

Kirton (2451) ²			
		vote	share
Upsall R.	Con	487	34.8
Franks W.	Ind	458	32.8
Hodgson D.	Res	453	32.4
Longland P.	Con	172	-
Turnout		57.0	2.1

No. 1 (Boston: Bargate) (1348) ²			
		vote	share
Wright J.	Lib	351	65.9
Mann E.	Lib	324	-
Stanwell D.	Res	182	34.1
Turnout		39.5	31.7

No. 10 (Freiston) (1728) ²			
		vote	share
Hildred J.	Ind	0	-
Paine P.	Ind	0	0.0
Turnout		0.0	0.0

No. 4 (Boston: Skirbeck) (4207) ⁴			
		vote	share
Harlow R.	Con	1,075	43.1
Marriott B.	Con	934	-
Goodson A.	Lab	847	34.0
Eyre B.	Lab	796	-
Stanley C.	Lab/COOP	570	22.9
Lewis J.	Lab/COOP	567	-
Turnout		59.2	9.1

No. 9 (Old Leake) (2600) ²			
		vote	share
Woods S.	Con	0	0.0
Allen H.	Ind	0	0.0
Turnout		0.0	0.0

South (2185) ²			
		vote	share
Veal B.	Res	503	54.8
Myatt F.	Lib	415	45.2
Simpson P.	Res	412	-
Wall C.	Lib	289	-
Turnout		42.0	9.6

Swineshead (1326)			
		vote	share
Porter K.	Ind	0	0.0
Turnout		0.0	0.0

West (4466) ³			
		vote	share
Parker J.	Con	0	-
Fovargue C.	Con	0	0.0
Hughes N.	Ind	0	0.0
Turnout		0.0	0.0

Witham (3582) ³			
		vote	share
Moulder R.	Con	1,143	58.6
Jenkin R.	Con	1,036	-
Fisher T.	Con	836	-
Surry D.	Lib	612	31.4
Nuzum N. Ms.	Lab	194	10.0
Turnout		54.4	27.2

Wyberton (2658) ²			
		vote	share
Cheer M. Ms.	Ind	656	53.3
Cutting A.	Res	575	46.7
Winter J.	Ind	398	-
Turnout		46.3	6.6

Boston - 1979

Bargate (1935) ²			
		vote	share
Wright J.	Lib	696	53.7
Mann E.	Lib	656	-
Austin T.	Con	599	46.3
Turnout		66.9	7.5

Central (2271) ²			
		vote	share
Wallis J.	Con	973	50.1
Haworth M. Ms.	Ind	968	49.9
Barnes G.	Ind	600	-
Turnout		85.5	0.3

Coastal (2326) ²			
		vote	share
Hildred J.	Ind	1,417	77.9
Paine J. Ms.	Ind	1,342	-
Loadman R.	Con	403	22.1
Turnout		78.2	55.7

Fenside (3206) ³			
		vote	share
Powell B.	Con	1,045	52.0
Hatfield D.	Lab	966	48.0
Addelsee J.	Lab	919	-
Townsend R.	Con	885	-
Galvin S.	Lab	774	-
Turnout		62.7	3.9

Fishtoft (3636) ³			
		vote	share
Alcorn J.	Con	0	0.0
Gosling B.	Ind	0	0.0
Smaller E.	Con	0	-
Turnout		0.0	0.0

Five Village (2276) ²			
		vote	share
Sharpe C.	Ind	882	62.6
Collier E. Ms.	Ind	672	-
Marriott I.	Ind	598	-
Upsall R.	Con	527	37.4
Turnout		61.9	25.2

Frampton (1075)			
		vote	share
Bailey G.	Ind	0	0.0
Turnout		0.0	0.0

Holland Fen (706)			
		vote	share
North T.	Ind	0	0.0
Turnout		0.0	0.0

Kirton (2726) ²			
		vote	share
Hodgson D.	Res	1,299	40.3
Welsh J.	Con	971	30.1
Franks W.	Ind	956	29.6
Turnout		118.3	10.2

Old Leake (1166)			
		vote	share
Allen B.	Ind	463	57.2
Powell H.	Con	347	42.8
Turnout		69.5	14.3

Skirbeck (3422) ³			
		vote	share
Goodson A.	Lab	1,362	54.7
Harlow D.	Con	1,129	45.3
Marriott B.	Con	1,038	-
Eyre B.	Lab	1,031	-
Lewis J.	Lab	815	-
Turnout		72.8	9.4

South (2026) ²			
		vote	share
Simpson P.	Res	683	34.8
Myatt F.	Lib	645	32.9
Budge S.	Con	633	32.3
Veal B.	Res	558	-
Turnout		96.8	1.9

Swineshead (1432)			
		vote	share
Moulder L. Ms.	Con	636	62.5
Porter K.	Ind	382	37.5
Turnout		71.1	25.0

West (3664) ³			
		vote	share
Hughes N.	Ind	0	0.0
Parker J.	Con	0	-
Fovargue C.	Con	0	0.0
Turnout		0.0	0.0

Witham (3830) ³			
		vote	share
Moulder G.	Con	1,737	53.8
Jenkin R.	Con	1,599	-
Napier E.	Lib	1,490	46.2
Fisher N.	Con	1,117	-
Turnout		84.3	7.7

Wrangle (975)			
		vote	share
Woods S.	Con	0	0.0
Turnout		0.0	0.0

Wyberton (2972) ²			
		vote	share
Lancaster K.	Con	1,151	56.6
Cutting A.	Ind	884	43.4
Cheer M. Ms.	Ind	844	-
Winter J.	Ind	749	-
Turnout		68.5	13.1

Boston - 1983

Bargate (1951) ²			
		vote	share
Wright J.	Lib/SDP	441	39.3
Mann E.	Lib/SDP	334	-
Howitt D. Ms.	Ind	261	23.3
Loadman R.	Con	216	19.3
Nuzum W.	Lab	204	18.2
Turnout		57.5	16.0

Central (2347) ²			
		vote	share
Haworth M. Ms.	Ind	598	54.8
Wallis J.	Con	493	45.2
Barnes T.	Ind	335	-
Turnout		46.5	9.6

Coastal (2442) ²			
		vote	share
Paine J. Ms.	Ind	0	0.0
Hildred J.	Ind	0	-
Turnout		0.0	0.0

Fenside (3396) ³			
		vote	share
Powell B.	Con	652	42.0
Addelsee J.	Lab	557	35.8
Hatfield D.	Lab	537	-
Wakefield C.	Lib/SDP	345	22.2
Green J.	Lib/SDP	284	-
Turnout		45.8	6.1

Fishtoft (4012) ³			
		vote	share
Dobson J. Ms.	Con	1,048	53.6
Gosling B.	Con	1,044	-
Alcorn J.	Con	955	-
Budge S.	Ind Con	499	25.5
Wall C.	Lib/SDP	408	20.9
Turnout		48.7	28.1

Five Village (2397) ²			
		vote	share
Hill L. Ms.	Con	0	0.0
Collier R.	Ind	0	0.0
Turnout		0.0	0.0

Frampton (1072)			
		vote	share
Ashton J. Ms.	Ind	340	58.2
Day R.	Con	152	26.0
Lewis J.	Ind	92	15.8
Turnout		54.5	32.2

Holland Fen (687)			
		vote	share
North T.	Ind	0	0.0
Turnout		0.0	0.0

Kirton (2873) ²			
		vote	share
Franks W.	Ind	732	50.4
Welsh J.	Con	721	49.6
Hodgson D.	Ind	610	-
Turnout		50.6	0.8

Old Leake (1203)			
		vote	share
Allen B.	Ind	0	0.0
Turnout		0.0	0.0

Skirbeck (3381) ³			
		vote	share
Goodson A.	Lab	832	45.2
Marriott B.	Con	615	33.4
Harlow D.	Con	576	-
Marshall C.	Lab	463	-
Blackburne R.	Lib/SDP	394	21.4
Turnout		54.5	11.8

South (2009) ²			
		vote	share
Dobson K.	Con	462	56.3
Archer L.	Con	456	-
Myatt F.	Lib/SDP	359	43.7
Brown A.	Lib/SDP	312	-
Turnout		40.9	12.5

Swineshead (1520)			
		vote	share
Moulder L. Ms.	Con	600	78.4
Porter W.	Ind	165	21.6
Turnout		50.3	56.9

West (3764) ³			
		vote	share
Fovargue C.	Con	915	29.6
Lowery J.	Lab	782	25.3
Cummings T.	Lib/SDP	746	24.1
Parker J.	Con	718	-
Hughes N.	Ind	649	21.0
Turnout		82.1	4.3

Witham (3974)³			
		vote	share
Moulder G.	Con	1,050	44.8
Disley J.	Con	983	-
Napier E.	Lib/SDP	967	41.3
Marriott I.	Ind	327	14.0
	Turnout	59.0	3.5

Wrangle (995)			
		vote	share
Woods S.	Con	0	0.0
	Turnout	0.0	0.0

Wyberton (3110)²			
		vote	share
Lancaster K.	Con	889	47.6
Cutting A.	Ind	604	32.3
Cheer M. Ms.	Ind	564	-
Harriss A.	Lab	376	20.1
Bull D.	Lab	373	-
	Turnout	60.1	15.2

Boston - 1987

Bargate (1852)²			
		vote	share
Mann E.	Lib/SDP	533	69.3
Wright J.	Lib/SDP	529	-
Laddis I.	Con	236	30.7
	Turnout	39.9	38.6

Central (2319)²			
		vote	share
Haworth M. Ms.	Ind	494	34.9
Wallis J.	Con	417	29.5
Hatfield D.	Ind Lab	263	18.6
Riis P.	Lab	240	17.0
	Turnout	38.3	5.4

Coastal (2495)²			
		vote	share
Paine J. Ms.	Ind	0	0.0
Hildred J.	Ind	0	-
	Turnout	0.0	0.0

Fenside (3625)³			
		vote	share
Marshall C.	Lab	830	57.4
Gilchrist F.	Lab	787	-
Goodale P.	Lab	753	-
Powell B.	Con	616	42.6
Smit P. Ms.	Con	438	-
	Turnout	40.0	14.8

Fishtoft (3016)³			
		vote	share
Dobson J. Ms.	Con	1,132	55.4
Cammack J. Ms.	Con	1,077	-
Tryner J.	Con	934	-
Snell O.	Lib/SDP	911	44.6
	Turnout	60.5	10.8

Five Village (2455)²			
		vote	share
Burton G.	Con	447	53.5
Day A.	Con	435	-
Chesman J.	Ind	388	46.5
Longland P.	Ind	362	-
	Turnout	37.7	7.1

Frampton (1101)			
		vote	share
Ashton J. Ms.	Ind	0	0.0
	Turnout	0.0	0.0

Holland Fen (669)			
		vote	share
North B.	Ind	0	0.0
	Turnout	0.0	0.0

Kirton (2938)²			
		vote	share
Welsh J.	Con	693	40.4
Franks W.	Ind	672	39.2
Taylor H.	Ind	518	-
Sharp G.	Lib/SDP	191	11.1
Neal A.	Lab	159	9.3
	Turnout	44.6	1.2

Old Leake (1273)			
		vote	share
Allen B.	Ind	0	0.0
	Turnout	0.0	0.0

Skirbeck (3420)³			
		vote	share
Marriott B.	Con	729	51.2
Bisby J. Ms.	Lab	696	48.8
Harlow D.	Con	662	-
Jessop E. Ms.	Lab	598	-
Clifford G. Ms.	Lab	580	-
	Turnout	43.0	2.3

South (1995)²			
		vote	share
Tebbs C.	Lib/SDP	505	51.6
Dobson K.	Con	474	48.4
Myatt F.	Lib/SDP	471	-
Archer L.	Con	404	-
	Turnout	48.2	3.2

Swineshead (1606)			
		vote	share
Moulder L. Ms.	Con	0	0.0
	Turnout	0.0	0.0

West (3848)³			
		vote	share
Vellam R.	Con	1,028	42.1
Lowery P.	Lab	717	29.4
Cummins T.	Lib/SDP	694	28.5
Belton M.	Lab	581	-
	Turnout	48.6	12.8

Witham (3972)³			
		vote	share
Moulder G.	Con	1,217	42.7
Napier E.	Lib/SDP	1,190	41.7
Wright M. Ms.	Con	1,040	-
Southgate S. Ms.	Lab	445	15.6
	Turnout	49.9	0.9

Wrangle (1001)			
		vote	share
Woods S.	Ind	0	0.0
	Turnout	0.0	0.0

Boston - 1991

Bargate (1907)²			
		vote	share
Wright J.*	LD	488	57.7
Jessop P. Ms.	LD	323	-
Scarrott J.	Con	190	22.5
O'Dell V.	Lab	168	19.9
	Turnout	36.3	35.2

Central (2228)²			
		vote	share
Walden C.	Lab	401	38.3
Hughman K. Ms.	Lab	341	-
Judge H. Ms.	Con	242	23.1
Watson M. Ms.	LD	235	22.4
Topliss B.	Con	226	-
Parker D.	LD	192	-
Fairman A. Ms.	Ind	170	16.2
	Turnout	42.6	15.2

Coastal (2557)²			
		vote	share
Pearson P.	Ind	651	57.8
Cederholm K.	Ind	552	-
Bedford P.	Con	476	42.2
Bell R.	Con	258	-
	Turnout	46.6	15.5

Fenside (3552)³			
		vote	share
Gilchrist F.*	Lab	841	66.7
Marshall C.*	Lab	750	-
Goodale P.*	Lab	714	-
Powell B.	Con	419	33.3
	Turnout	36.3	33.5

Fishtoft (4170)³			
		vote	share
Dobson J. Ms.*	Con	1,079	53.4
Cammack J. Ms.*	Con	1,054	-
Snell O.	LD	943	46.6
Tryner J.*	Con	897	-
Wright D.	LD	619	-
McIntyre R.	LD	571	-
	Turnout	45.6	6.7

Five Village (2586)²			
		vote	share
Dawson G.*	Con	587	53.8
Day R.*	Con	577	-
Longland P.	Ind	504	46.2
	Turnout	41.1	7.6

Frampton (1071)			
		vote	share
Ashton J. Ms.*	Ind	0	0.0
	Turnout	0.0	0.0

Holland Fen (668)			
		vote	share
Leggett R.	Ind	208	56.4
Mastin B.	Ind	130	35.2
Bayne G.	Lab	31	8.4
	Turnout	54.9	21.1

Kirton (3002)²			
		vote	share
Graves S.*	Ind	921	69.7
Taylor H.*	Ind	851	-
Pinder B. Ms.	Con	400	30.3
	Turnout	41.2	39.4

Old Leake (1300)			
		vote	share
Dobson K.	Con	0	0.0
	Turnout	0.0	0.0

Skirbeck (3402)³			
		vote	share
Meadows R.	Lab	815	59.2
Bakewell S. Ms.	Lab	802	-
Belton D. Ms.	Lab	782	-
Marriott R.*	Con	562	40.8
Harlow R.*	Con	439	-
	Turnout	43.8	18.4

South (1889)²			
		vote	share
Tebbs C.*	LD	472	43.6
Lawson J.	Con	342	31.6
Tebbs M. Ms.	LD	338	-
Charlton A.	Ind	269	24.8
	Turnout	44.9	12.0

Swineshead (1602)			
		vote	share
Cope J.	Ind Con	604	76.9
Marriott G.	Ind	181	23.1
	Turnout	48.9	53.9

West (3891) ³			
		vote	share
Knowles E. Ms.*	LD	1,405	50.3
Boughy N.	LD	1,106	-
Batram H.	Con	796	28.5
Lowery J.*	Lab	590	21.1
Bakewell A.	Lab	454	-
Turnout		51.4	21.8

Witham (4074) ³			
		vote	share
Napier E.*	LD	0	0.0
Moulder G.	Con	0	-
Wright M. Ms.*	Con	0	0.0
Turnout		0.0	0.0

Wrangle (1005)			
		vote	share
Danby G.*	Con	0	0.0
Turnout		0.0	0.0

Wyberton (3129) ²			
		vote	share
Ward K.*	LD	707	41.2
Cutting A.*	Ind	613	35.8
Fossitt L. Ms.	Con	394	23.0
Parker S. Ms.	LD	276	-
Chester D.	Ind	239	-
Hill A. Ms.	Ind	213	-
Turnout		43.8	5.5

Boston - 1995

Bargate (1958) ²			
		vote	share
Belton M.	Lab	442	55.7
Wright J.*	LD	351	44.3
Jessup P. Ms.*	LD	271	-
Turnout		36.7	11.5

Central (2336) ²			
		vote	share
Walden C.*	Lab	562	74.7
Hughman K. Ms.*	Lab	441	-
Spalding C.	Con	190	25.3
Turnout		34.0	49.5

Coastal (2597) ²			
		vote	share
Bedford P.	Con	0	0.0
Dunn T.	Ind	0	0.0
Turnout		0.0	0.0

Fenside (3497) ³			
		vote	share
Gilchrist F.*	Lab	710	69.8
Marshall C.*	Lab	617	-
Goodale P.*	Lab	616	-
Cooper T.	Ind	307	30.2
Williams G.	Ind	303	-
Turnout		31.3	39.6

Fishtoft (4499) ³			
		vote	share
Snell O.	LD	1,086	38.7
Dobson J. Ms.*	Con	937	33.4
Cammack J. Ms.*	Con	906	-
Blissett E.	Lab	782	27.9
Hughman A.	Lab	674	-
Turnout		43.0	5.3

Five Village (2613) ²			
		vote	share
Longland P.	Ind	556	56.2
Day R.*	Con	433	43.8
Dawson G.*	Con	425	-
Turnout		36.4	12.4

Frampton (1027)			
		vote	share
Ashton J. Ms.*	Ind	330	67.8
Halderson W.	Lab	157	32.2
Turnout		47.8	35.5

Holland Fen (671)			
		vote	share
Leggott R.*	Ind	0	0.0
Turnout		0.0	0.0

Kirton (2980) ²			
		vote	share
Graves S.*	Ind	655	40.8
Barton J. Ms.	Lab	550	34.3
Pinder E. Ms.	Con	399	24.9
Turnout		37.3	6.5

Old Leake (1376)			
		vote	share
Targett K.	Lab	374	52.2
Dobson K.*	Con	343	47.8
Turnout		52.4	4.3

Skirbeck (3302) ³			
		vote	share
Bakewell S. Ms.	Lab	0	-
Belton D. Ms.	Lab	0	-
Langman J.	Lab	0	0.0
Turnout		0.0	0.0

South (1998) ²			
		vote	share
Stewart J. Ms.	Lab	348	28.1
Tebbs C.*	LD	316	25.5
Charlton A.	Ind	290	23.4
Lawson A.*	Con	283	22.9
Turnout		39.9	2.6

Swineshead (1754)			
		vote	share
Cope J.*	Ind	457	72.7
Marriott G.	LD	172	27.3
Turnout		36.0	45.3

West (3907) ³			
		vote	share
Knowles E. Ms.*	LD	1,193	44.8
Boughy W.*	LD	1,034	-
Bakewell A.	Lab	839	31.5
Batram H.*	Con	633	23.8
Turnout		46.0	13.3

Witham (4154) ³			
		vote	share
Napier E.*	LD	962	40.4
Forster S.	Lab	742	31.1
Jenkinson J.	LD	683	-
Wright M. Ms.*	Con	680	28.5
Rutt G. Ms.	Con	616	-
Turnout		42.3	9.2

Wrangle (1005)			
		vote	share
Danby G.*	Con	315	66.3
Parsons E.	Lab	160	33.7
Turnout		47.3	32.6

Wyberton (3080) ²			
		vote	share
Cory R.	LD	764	37.2
Hart N.	Lab	398	19.4
Cutting A.*	Ind	367	17.9
Taylor T.	Con	336	16.4
Fleming S. Ms.	Lab	279	-
Parker S. Ms.	Ind LD	190	9.2
Turnout		42.7	17.8

Boston - 1999

Central (1284)			
		vote	share
Stewart J. Ms.	Lab	218	64.9
Street P. Ms.	Con	118	35.1
Turnout		26.3	29.8

Coastal (2884) ²			
		vote	share
Bedford P.*	Con	586	45.5
Dawson K. Ms.	Ind	463	35.9
Brown P.	Lab	239	18.6
Turnout		32.2	9.5

Fenside (2495) ²			
		vote	share
Gilchrist F.*	Lab	351	46.7
Marshall C.*	Lab	262	-
Ruck W.	Ind	260	34.6
Street G.	Con	141	18.8
Turnout		26.7	12.1

Fishtoft (4237) ³			
		vote	share
Dobson J. Ms.*	Con	756	40.1
Snell O.*	LD	729	38.7
Judge M.	Con	567	-
O'Dell V.	Lab	398	21.1
Turnout		30.5	1.4

Five Village (2574) ²			
		vote	share
Day R.*	Con	489	40.1
Longland P.*	Ind	314	25.8
Kershaw Y. Ms.	Lab	217	17.8
Jenkinson J.	LD	199	16.3
Turnout		30.2	14.4

Frampton & Holme (1349)			
		vote	share
Ashton J. Ms.*	Ind	457	87.5
Fleming S. Ms.	Lab	65	12.5
Turnout		38.7	75.1

Kirton (2753) ²			
		vote	share
Barton J. Ms.*	Ind	456	38.6
Pinder E. Ms.	Con	452	38.3
White J. Ms.	Lab	273	23.1
Turnout		30.3	0.3

North (2652) ²			
		vote	share
Wright H.	Con	691	71.7
Wright M. Ms.	Con	671	-
Shaw M. Ms.	Lab	273	28.3
Turnout		36.2	43.4

Old Leake & Wrangle (2434) ²			
		vote	share
Danby G.*	Con	664	67.3
Powell B.	Con	353	-
Clark J.	Lab	322	32.7
Turnout		39.0	34.7

Pilgrim (1380)			
		vote	share
Bolton M.*	Lab	204	57.1
Parry L. Ms.	Con	153	42.9
Turnout		25.9	14.3

Skirbeck (3821) ³			
		vote	share
Nodder P.	Lab	622	46.4
Belton D. Ms.*	Lab	602	-
Bakewell S. Ms.*	Lab	586	-
Hornby L.	Con	397	29.6
Tickell C.	Ind	322	24.0
Turnout		29.7	16.8

South (1355)			
		vote	share
Millington T.	Con	182	38.4
Tebbs C.*	LD	150	31.6
Marshall C. Ms.	Lab	142	30.0
Turnout		35.1	6.8

Staniland North (1358)			
		vote	share
Goodale P.*	Lab	263	61.0
Davison G.	Con	168	39.0
Turnout		32.0	22.0

Staniland South (2800) ²			
		vote	share
Walden M. Ms.*	Lab	377	39.0
Bakewell A.*	Lab	325	-
Pryke R.	LD	303	31.4
Woolliffe S.	Con	286	29.6
Turnout		27.6	7.7

Swineshead & Holland Fen (2521) ²			
		vote	share
Brookes M.*	Ind	864	86.1
Leggott R.*	Ind	754	-
Harrison D.	Lab	140	13.9
Turnout		39.0	72.1

West (1272)			
		vote	share
Batram H.*	Con	337	73.4
Lowery J.	Lab	122	26.6
Turnout		36.1	46.8

Witham (2971) ²			
		vote	share
Napier E.*	LD	506	40.0
Forster S.*	Lab	401	31.7
Gostlow R.	Con	357	28.2
Roberts M.	LD	211	-
Turnout		31.6	8.3

Wyberton (2986) ²			
		vote	share
Cory R.*	LD	656	49.7
Taylor T.	Con	363	27.5
Hart N.*	Lab	301	22.8
Parker S. Ms.	LD	264	-
Turnout		32.1	22.2

Boston - 2003

Central (1217)			
		vote	share
Stewart J. Ms.*	Lab	0	0.0
Turnout		0.0	0.0

Coastal (2970) ²			
		vote	share
Bedford P.*	Con	0	0.0
Dawson K. Ms.*	Ind	0	0.0
Turnout		0.0	0.0

Fenside (2487) ²			
		vote	share
Gilchrist F.*	Lab	292	64.6
Hart N.	Lab	250	-
Street G.	Con	160	35.4
Turnout		18.3	29.2

Fishtoft (4452) ³			
		vote	share
Snell O.*	LD	732	40.8
Dobson J. Ms.*	Con	680	37.9
Judge M.*	Con	524	-
Gall S. Ms.	Lab	383	21.3
Turnout		27.6	2.9

Five Village (2695) ²			
		vote	share
Day R.*	Con	0	0.0
Craven P.	Con	0	-
Turnout		0.0	0.0

Frampton & Holme (1359)			
		vote	share
Ashton J. Ms.*	Ind	0	0.0
Turnout		0.0	0.0

Kirton (3020) ²			
		vote	share
Pinder E. Ms.*	Con	353	42.3
Brotherton C.	Ind	335	40.2
Ashdown A.	Con	314	-
Davison G.	Ind	233	-
Harrison D.	Lab	146	17.5
Turnout		25.7	2.2

North (2660) ²			
		vote	share
Wright H.*	Con	575	64.2
Wright M. Ms.*	Con	555	-
Marshall C.*	Lab	321	35.8
Turnout		32.9	28.3

Old Leake & Wrangle (2533) ²			
		vote	share
Dennis M. Ms.	Con	287	68.0
Powell B.*	Con	279	-
Gardner P.	Lab	73	17.3
Devenish G.	UK Ind	62	14.7
Turnout		31.4	50.7

Pilgrim (1254)			
		vote	share
Kenny P.	Lab	179	53.6
Gunter Y. Ms.	Con	155	46.4
Turnout		26.6	7.2

Skirbeck (3848) ³			
		vote	share
Nodder P.*	Lab	472	53.3
Bakewell S. Ms.*	Lab	457	-
Finch A.	Lab	416	-
Borrill A.	Con	413	46.7
Street P. Ms.	Con	412	-
Turnout		24.6	6.7

South (1607)			
		vote	share
Austin A.	Con	194	49.0
Cooper P. Ms.	Ind	130	32.8
Roberts C. Ms.	Lab	72	18.2
Turnout		24.8	16.2

Staniland North (1306)			
		vote	share
Goodale P.*	Lab	0	0.0
Turnout		0.0	0.0

Staniland South (2742) ²			
		vote	share
Bakewell A.*	Lab	0	-
Walden M. Ms.*	Lab	0	0.0
Turnout		0.0	0.0

Swineshead & Holland Fen (2765) ²			
		vote	share
Brookes M.*	Ind	739	100.0
Leggott R.*	Ind	561	-
Forman A.	Ind	237	-
Turnout		33.9	82.4

West (1310)			
		vote	share
Batram H.*	Con	306	67.1
Hart C. Ms.	Lab	75	16.4
Ingamells D.	LD	75	16.4
Turnout		35.2	50.7

Witham (2886) ²			
		vote	share
Napier E.*	LD	0	0.0
Forster S.*	Lab	0	0.0
Turnout		0.0	0.0

Wyberton (3010) ²			
		vote	share
Cory R.*	LD	649	53.5
Tebbs C.	LD	335	-
Taylor T.*	Con	281	23.2
Ransom D.	UK Ind	143	11.8
Slater J.	Lab	140	11.5
Turnout		29.8	30.3

Boston - 2007

Central (1179)			
		vote	share
Gilbert M.	Con	148	40.3
Waterfield K.	Bost Ind	136	37.1
Stewart J. Ms.*	Lab	83	22.6
Turnout		31.1	3.3

Coastal (2985) ²			
		vote	share
McGregor N.	Bost Ind	681	39.7
Bedford P.*	Con	557	32.5
Windsor H.	Bost Ind	515	-
Dawson K. Ms.*	Ind	354	20.6
Ransome F. Ms.	UKIP	123	7.2
Turnout		41.8	7.2

Fenside (2804) ²			
		vote	share
Curley G.	Bost Ind	317	43.3
Newell S. Ms.	Bost Ind	315	-
Bakewell A.*	Lab	174	23.8
Chapman M. Ms.	Con	134	18.3
Hart N.*	Lab	116	-
Wakefield C.	UKIP	107	14.6
Turnout		22.7	19.5

Fishtoft (4705) ³			
		vote	share
Lenton R.	Bost Ind	846	38.6
Barker E. Ms.	Bost Ind	821	-
Staples H. Ms.	Bost Ind	814	-
Snell O.*	LD	600	27.3
Skinner P.	Con	563	25.7
Singleton-Mcguire R.*	Con	535	-
Chapman M.	LD	358	-
Flynn J.	UKIP	185	8.4
Turnout		39.3	11.2

Five Village (3117) ²			
		vote	share
Clarke T.	Bost Ind	557	46.0
Witts D.	Bost Ind	513	-
Day R.*	Con	509	42.0
Winder J.	Con	503	-
Sutton J. Ms.	UKIP	146	12.0
Turnout		38.4	4.0

Frampton & Holme (1352)			
		vote	share
Rush B.	Bost Ind	310	45.0
Cooper P.	Ind	216	31.3
Sharpe R.	Con	163	23.7
Turnout		51.4	13.6

Kirton (3583) ²			
		vote	share
Dungworth J.	Bost Ind	568	35.1
Rylatt J.*	Con	540	33.4
Brotherton C.*	Ind	511	31.6
Proctor H. Ms.	Bost Ind	430	-
Turnout		30.8	1.7

North (2870) ²			
		vote	share
Clare G.	Bost Ind	858	60.7
Jordan P.	Bost Ind	824	-
Wright M. Ms.*	Con	436	30.9
Wright H.*	Con	340	-
Gardner P.	Lab	119	8.4
Turnout		45.7	29.9

Old Leake & Wrangle (2641) ²			
		vote	share
Grant J.	Bost Ind	518	45.1
Dennis M. Ms.*	Con	455	39.6
Sargeant J. Ms.	Bost Ind	454	-
Pickett F.*	Con	338	-
Ransome S. Ms.	UKIP	175	15.2
Turnout		41.1	5.5

Pilgrim (1299)			
		vote	share
Ruskin J.	Con	173	49.0
McIntyre R.	Bost Ind	147	41.6
Uddin J.	Lab	33	9.3
Turnout		27.2	7.4

Skirbeck (3913) ³			
		vote	share
Dorrian A. Ms.	Bost Ind	669	39.8
Hobson D.	Bost Ind	613	-
Rush P.	Bost Ind	528	-
Nodder P.*	Lab	318	18.9
Bakewell S. Ms.*	Lab	315	-
Smith S.	Con	278	16.5
Gall M.*	Lab	239	-
Parkhill M.	UKIP	222	13.2
Hughes-West R.	BNP	194	11.5
Turnout		33.0	20.9

South (1686)			
		vote	share
Austin A. Ms.	Bost Ind	358	56.8
Austin T.*	Con	196	31.1
Wyatt S.	Edem	76	12.1
Turnout		37.6	25.7

Staniland North (1360)			
		vote	share
Lingard D.	Bost Ind	184	42.0
Goodale P.*	Lab	113	25.8
Clark M. Ms.	Con	108	24.7
Ransome E. Ms.	UKIP	33	7.5
Turnout		32.3	16.2

Staniland South (2870) ²			
		vote	share
Clarkson M.	Bost Ind	537	50.4
Newell R.	Bost Ind	483	-
Mould P.	Con	271	25.4
Kenny P.*	Lab	258	24.2
Gall S-A. Ms.*	Lab	218	-
Turnout		33.9	25.0

Swineshead & Holland Fen (2929) ²			
		vote	share
Brookes M.*	Ind	717	51.0
Leggott R.*	Ind	543	-
Green A.	Bost Ind	392	27.9
Storry A. Ms.	Bost Ind	309	-
Lowrie B.	Con	237	16.9
Finch A.	Lab	59	4.2
Turnout		41.5	23.1

West (1553)			
		vote	share
Owen B. Ms.	Bost Ind	393	55.4
Richmond D.	Con	264	37.2
Sylvester P.	Lab	53	7.5
Turnout		45.8	18.2

Witham (3015) ²			
		vote	share
Dovey G.	Bost Ind	672	48.7
Blaylock J.	Bost Ind	496	-
Rawlings M.	Con	427	31.0
Forster S.*	Lab	280	20.3
Turnout		36.5	17.8

Wyberton (3005) ²			
		vote	share
Austin R.	Bost Ind	634	47.3
Storry J.	Bost Ind	402	-
Cory B.*	LD	360	26.8
Tebbs C.*	LD	219	-
Parker S. Ms.	Con	201	15.0
Ransome D.	UKIP	146	10.9
Turnout		35.9	20.4

Boston - 2011

Central (1084)			
		vote	share
Gilbert M.*	Con	175	47.8
Wagstaff I.	Lab	107	29.2
Jones J. Ms.	Bost Ind	68	18.6
Vagueiro R.	LD	16	4.4
Turnout		34.0	18.6

Coastal (2997) ²			
		vote	share
Bedford P.*	Con	789	53.4
Singleton-Mcguire R.	Con	426	-
Parkhill M.	Bost Ind	359	24.3
Moore J. Ms.	UKIP	329	22.3
Turnout		44.1	29.1

Fenside (2842) ²			
		vote	share
Fountain E.	Edem	231	35.9
Owens D.	Edem	195	-
Blythe J.	Bost Ind	182	28.3
Cheung A.	Bost Ind	176	-
Hart N.	Lab	162	25.2
Gleeson W. Ms.	Lab	159	-
Neves H.	LD	68	10.6
Figueira G.	LD	51	-
Turnout		24.9	7.6

Fishtoft (4661) ³			
		vote	share
Snell O.	Ind	891	34.9
Skinner J. Ms.	Con	639	25.0
Staples H. Ms.*	Bost Ind	626	24.5
Millington T.	Con	472	-
Bills D.	Edem	397	15.6
Andrijauskiene A. Ms.	Con	341	-
Sheridan-Shinn H. Ms.	Ind	308	-
Turnout		39.8	9.9

Five Village (3087) ²			
		vote	share
Spencer A.	Con	703	48.2
Witts D.*	Bost Ind	391	26.8
Sutton J. Ms.	UKIP	364	25.0
Witts H. Ms.	Bost Ind	289	-
Turnout		39.0	21.4

Frampton & Holme (1364)			
		vote	share
Rush B.*	Ind	373	57.0
Stevens Y. Ms.	Bost Ind	189	28.9
Mason C.	UKIP	92	14.1
Turnout		48.8	28.1

Kirton (3660) ²			
		vote	share
Brotherton C.	Con	573	32.5
Lee A.	Ind	518	29.4
Ransome S. Ms.	UKIP	276	15.6
Dungworth J.*	Bost Ind	201	11.4
Blackamore M.	Edem	196	11.1
Taylor T.	Bost Ind	162	-
Ings P.	Ind	102	-
Turnout		34.3	3.1

North (3052) ²			
		vote	share
Richmond D.	Con	712	56.8
Samra G.	Con	594	-
Clare G.*	Bost Ind	541	43.2
Jordan P.*	Bost Ind	490	-
Turnout		43.8	13.6

Old Leake & Wrangle (2681) ²			
		vote	share
Dennis M. Ms.*	Con	727	53.2
Pickett H.	Con	505	-
Anderson D.	Bost Ind	337	24.7
Ransome F. Ms.	UKIP	303	22.2
Turnout		44.4	28.5

Pilgrim (1170)			
		vote	share
Baker M.	Con	146	42.4
Sheridan-Shinn M.	Lab	93	27.0
Taylor J.	Edem	57	16.6
Boyden L. Ms.	Bost Ind	48	14.0
Turnout		29.7	15.4

Skirbeck (3918) ³			
		vote	share
Kenny P.	Lab	433	25.8
Smith A. Ms.	Con	397	23.7
Gleeson P.	Lab	390	-
Gall S. Ms.	Lab	372	-
Dorrian A. Ms.*	Ind	336	20.0
Rowe C.	Edem	306	18.2
McCuaig C.	Edem	259	-
Lauberts R. Ms.	Bost Ind	206	12.3
Hobson D.*	Bost Ind	198	-
Lauberts R.	Bost Ind	188	12.3
Turnout		33.6	2.1

South (1793)			
		vote	share
Austin A. Ms.*	Bost Ind	359	51.7
Abbott D.	Con	224	32.3
Cooper P. Ms.	Ind	111	16.0
Turnout		39.3	19.5

Staniland North (1135)			
		vote	share
Goodale P.	Lab	118	28.0
Pearson S.	Bost Ind	110	26.1
Green R.	Edem	85	20.1
Franhovicz G.	Con	66	15.6
Ransome E. Ms.	UKIP	43	10.2
Turnout		37.2	1.9

Staniland South (2800) ²			
		vote	share
Mould P.	Con	293	29.7
Gunter Y. Ms.	Con	284	-
Kenny P. Ms.	Lab	265	26.8
Newell R.*	Bost Ind	244	24.7
Gall M.	Lab	225	-
Newell S. Ms.*	Bost Ind	194	-
Blackamore L.	Edem	186	18.8
Crozier D.	Edem	175	-
Turnout		35.4	2.8

Swineshead & Holland Fen (3035) ²			
		vote	share
Brookes M.*	Con	792	44.6
Leggott R.*	Ind	673	37.9
Curley J. Ms.	Bost Ind	312	17.6
Turnout		41.9	6.7

West (1666)

		vote	share
Woodliffe S.	Con	438	56.5
Hill I.	Bost Ind	208	26.8
Isham R.	Edem	129	16.6
<hr/>			
	Turnout	47.2	29.7

Witham (3044)²

		vote	share
Taylor C. Ms.	Con	439	36.2
Wright M. Ms.	Con	382	-
Beech I. Ms.	Lab	262	21.6
Flood S.	UKIP	248	20.5
Pearson C. Ms.	Bost Ind	133	11.0
Appleby P.	LD	130	10.7
Scanlan C. Ms.	Bost Ind	84	-
<hr/>			
	Turnout	34.8	14.6

Wyberton (3022)²

		vote	share
Austin R.*	Bost Ind	487	37.8
Knowles J.	Con	348	27.0
Skinner P.	Con	291	-
Parker S. Ms.	Ind	233	18.1
Ransome D.	UKIP	220	17.1
Walker P.	Bost Ind	217	-
Storry J.*	Ind	171	-
<hr/>			
	Turnout	36.7	10.8

